

Submit to Appropriate
District Office
State Lease - 6 copies
Fee Lease - 5 copies

State of New Mexico
Energy, Minerals and Natural Resources Department

Form C-101
Revised 1-1-89

DISTRICT I
P.O. Box 1980, Hobbs, NM 88240

DISTRICT II
P.O. Drawer DD, Artesia, NM 88210

DISTRICT III
1000 Rio Brazos Rd., Aztec, NM 87410

OIL CONSERVATION DIVISION

P.O. Box 2088
Santa Fe, New Mexico 87504-2088

MAR 6 1990

OIL CON. DIV.

API NO. (assigned by OCD on New Wells)

5. Indicate Type of Lease

STATE ☒ FEE ☐

6. State Oil & Gas Lease No.

LG-3876

APPLICATION FOR PERMIT TO DRILL, DEEPEN, OR PLUG BACK

1a. Type of Work:

DRILL ☒

RE-ENTER ☐

DEEPEN ☐

PLUG BACK ☐

b. Type of Well:

OIL
WELL ☐

GAS
WELL ☒

OTHER ☐

SINGLE
ZONE ☒

MULTIPLE
ZONE ☐

7. Lease Name or Unit Agreement Name

Quinoco State N

2. Name of Operator

Quinoco Petroleum, Inc.

8. Well No.

4

3. Address of Operator

P. O. Box 378111, Denver, CO 80237

9. Pool name or Wildcat

Basin Fruitland Coal

4. Well Location

Unit Letter N : 965 Feet From The South Line and 2165 Feet From The West Line

Section 2

Township 31N

Range 7W

NMPM San Juan

County

10. Proposed Depth

3,320'

11. Formation

Fruitland

12. Rotary or C.T.

Rotary

13. Elevations (Show whether DF, RT, GR, etc.)

6529' GR

14. Kind & Status Plug. Bond

National Blanket

15. Drilling Contractor

16. Approx. Date Work will start

April 20, 1990

17. PROPOSED CASING AND CEMENT PROGRAM

\$1,310.88

SIZE OF HOLE	SIZE OF CASING	WEIGHT PER FOOT	SETTING DEPTH	SACKS OF CEMENT	EST. TOP
12 - 1/4"	9 - 5/8"	32#	350'	210 sxs "B"	Surf
8 - 3/4"	7"	17#	3092' 234	200 sxs 65/35	
	5 1/2"	15.5#	2017' - 3320'	60 sxs "B"	Surf

Quinoco Petroleum, Inc. wishes to advise that we intend to drill a 12-1/4" hole with spud mud to 350' and set 9 - 5/8", 32.0#, K-55 LT&C casing to 350' cementing to surface with 210 sxs (248 cu ft) Class B cement with 2% CaCl2. Wait on cement 12 hours. Nipple up and test BOP. Drill 8 - 3/4" hole out of surface to 3,092' with mud. Log well. Set 7", 17.0#, J-55 LT&C production casing to 3,092' cementing to surface with 200 sxs (368 cu ft) 65/35 POZ with 6% gel and 12-1/4# gilsonite/sk, tailed by 60 sxs (82 cu ft) Class B cement with 2% CaCl2. Drillout intermediate w/6-1/4" bit on 3-1/2" drill pipe using service rig. After drilling coal, rig up compressor and air circulation equipment, blow well 2-3 days until rate stabilizes. Snub 5-1/2" liner. Hang off liner w/ hydraulic set pack-off type hanger. Perf. 5-1/2" liner pay section in the Fruitland Coal. Clean up well and install standard production equipment. Test well to reserve pit for a period not to exceed 30 days. Connect well to a gathering system.

BOP-RIP 53
IN ABOVE SPACE DESCRIBE PROPOSED PROGRAM: IF PROPOSAL IS TO DEEPEN OR PLUG BACK, GIVE DATA ON PRESENT PRODUCTIVE ZONE AND PROPOSED NEW PRODUCTIVE ZONE. GIVE BLOWOUT PREVENTER PROGRAM, IF ANY.

I hereby certify that the information above is true and complete to the best of my knowledge and belief.

SIGNATURE

Holly S. Richardson

TITLE Sr. Ops. Eng. Tech.

DATE March 13, 1990

TYPE OR PRINT NAME

Holly S. Richardson

(303)
TELEPHONE NO. 850-6322

(This space for State Use)

APPROVED BY

Emile Buehler

TITLE DEPUTY OIL & GAS INSPECTOR, DIST. #3

DATE

MAR 20 1990

CONDITIONS OF APPROVAL, IF ANY:

APPROVAL OF THIS PROPOSAL IS REQUIRED PRIOR TO COMMENCEMENT OF DRILLING. SPUD REPORT MUST BE SUBMITTED WITHIN 10 DAYS.

R-90601

THE UNIVERSITY OF
THE SOUTH ALABAMA
LIBRARY

1000 UNIVERSITY BLVD
MOBILE, AL 36688

DATE 11/11/11

BY 1000 UNIVERSITY BLVD A 100 YTH

Submit to Appropriate
District Office
State Lease - 4 copies
Fee Lease - 3 copies

State of New Mexico
Energy, Minerals and Natural Resources Department

Form C-102
Revised 1-1-89

OIL CONSERVATION DIVISION

P.O. Box 2088
Santa Fe, New Mexico 87504-2088

DISTRICT I
P.O. Box 1980, Hobbs, NM 88240

DISTRICT II
P.O. Drawer DD, Artesia, NM 88210

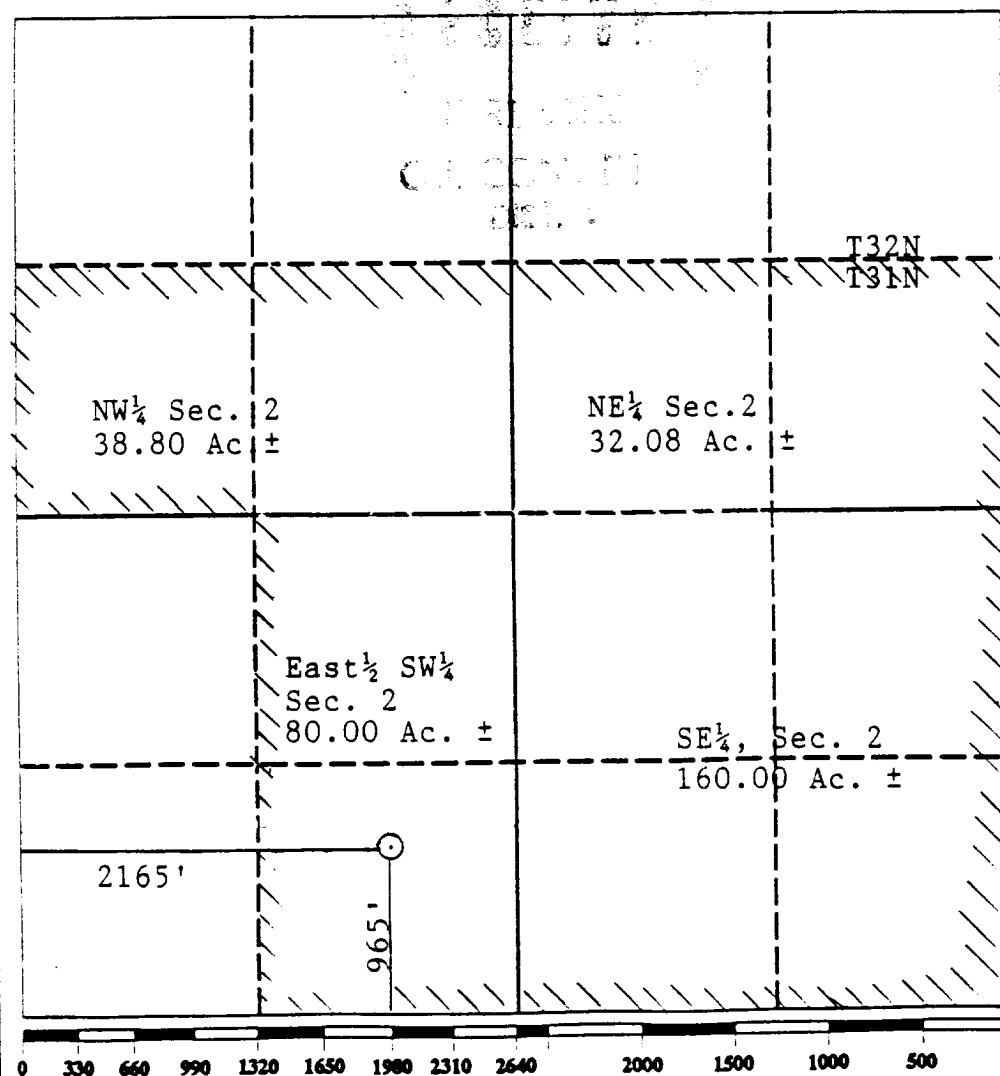
DISTRICT III
1000 Rio Brazos Rd., Aztec, NM 87410

WELL LOCATION AND ACREAGE DEDICATION PLAT

All Distances must be from the outer boundaries of the section

Operator QUINOCO Petroleum, Inc.			Lease Quinoco State N		Well No. 84
Unit Letter N	Section 2	Township 31N	Range 7W	County NMPM	SAN JUAN
Actual Footage Location of Well: 965 feet from the South line and 2165 feet from the West line					
Ground level Elev. 6529	Producing Formation Fruitland	Pool Basin Fruitland	Dedicated Acreage: 310.88 Acres		

- Outline the acreage dedicated to the subject well by colored pencil or hatchure marks on the plat below.
- If more than one lease is dedicated to the well, outline each and identify the ownership thereof (both as to working interest and royalty).
- If more than one lease of different ownership is dedicated to the well, have the interest of all owners been consolidated by communitization, unitization, force-pooling, etc?
☐ Yes ☒ No If answer is "yes" type of consolidation _____
If answer is "no" list the owners and tract descriptions which have actually been consolidated. (Use reverse side of this form if necessary).
No allowable will be assigned to the well until all interests have been consolidated (by communitization, unitization, forced-pooling, or otherwise) or until a non-standard unit, eliminating such interest, has been approved by the Division.



OPERATOR CERTIFICATION

I hereby certify that the information contained herein is true and complete to the best of my knowledge and belief.

Holly S. Richardson
Signature

Holly S. Richardson

Printed Name

Sr. Ops. Eng. Tech.

Position

Quinoco Petroleum, Inc.

Company

March 13, 1990

Date

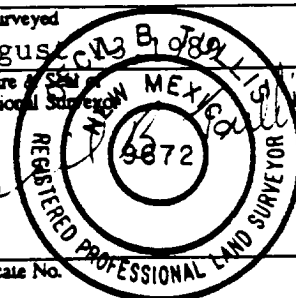
SURVEYOR CERTIFICATION

I hereby certify that the well location shown on this plat was plotted from field notes of actual surveys made by me or under my supervision, and that the same is true and correct to the best of my knowledge and belief.

Date Surveyed

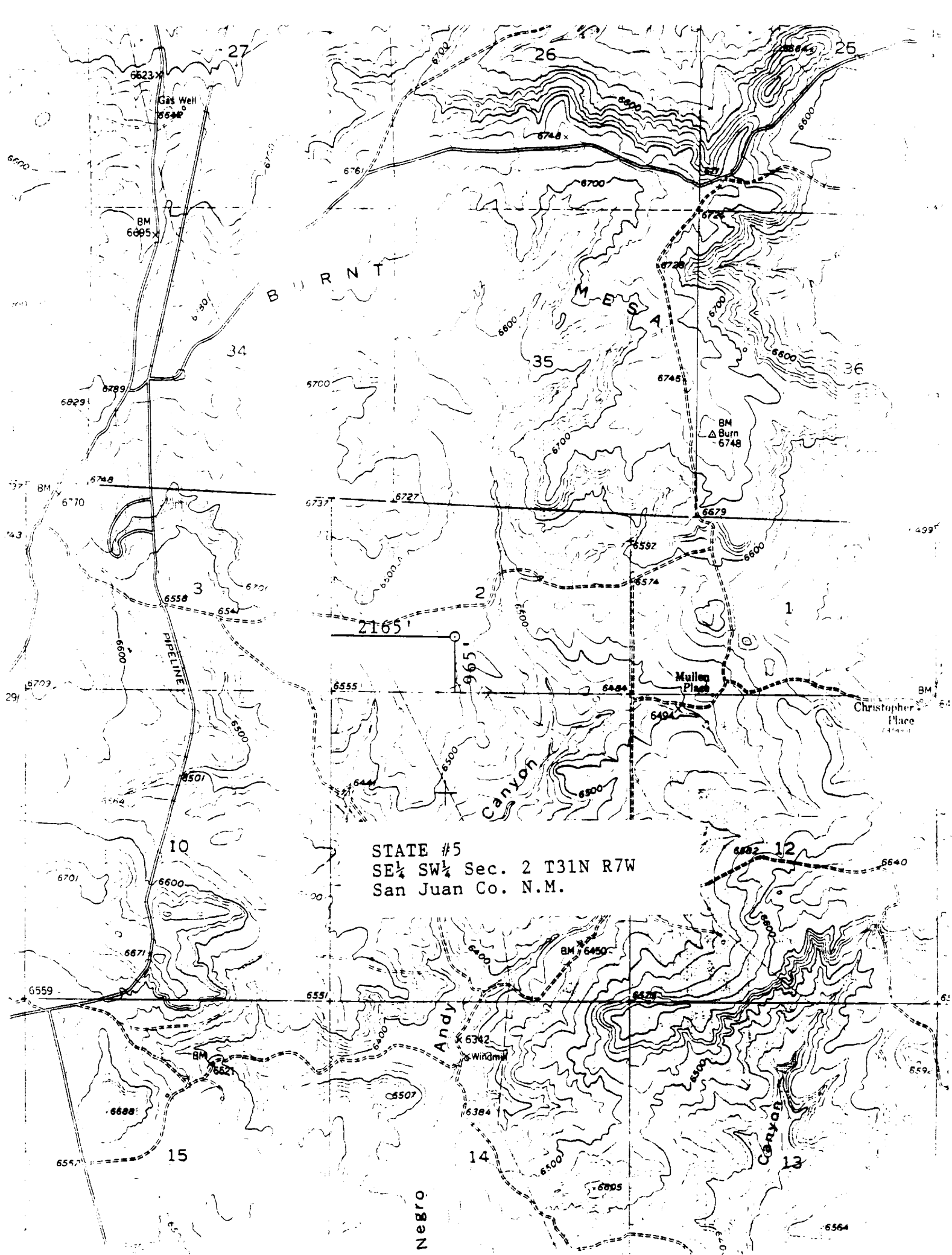
August 3, 1989

Signature of State or Professional Surveyor

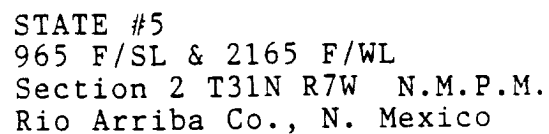


Certificate No.

9672



QUINCY



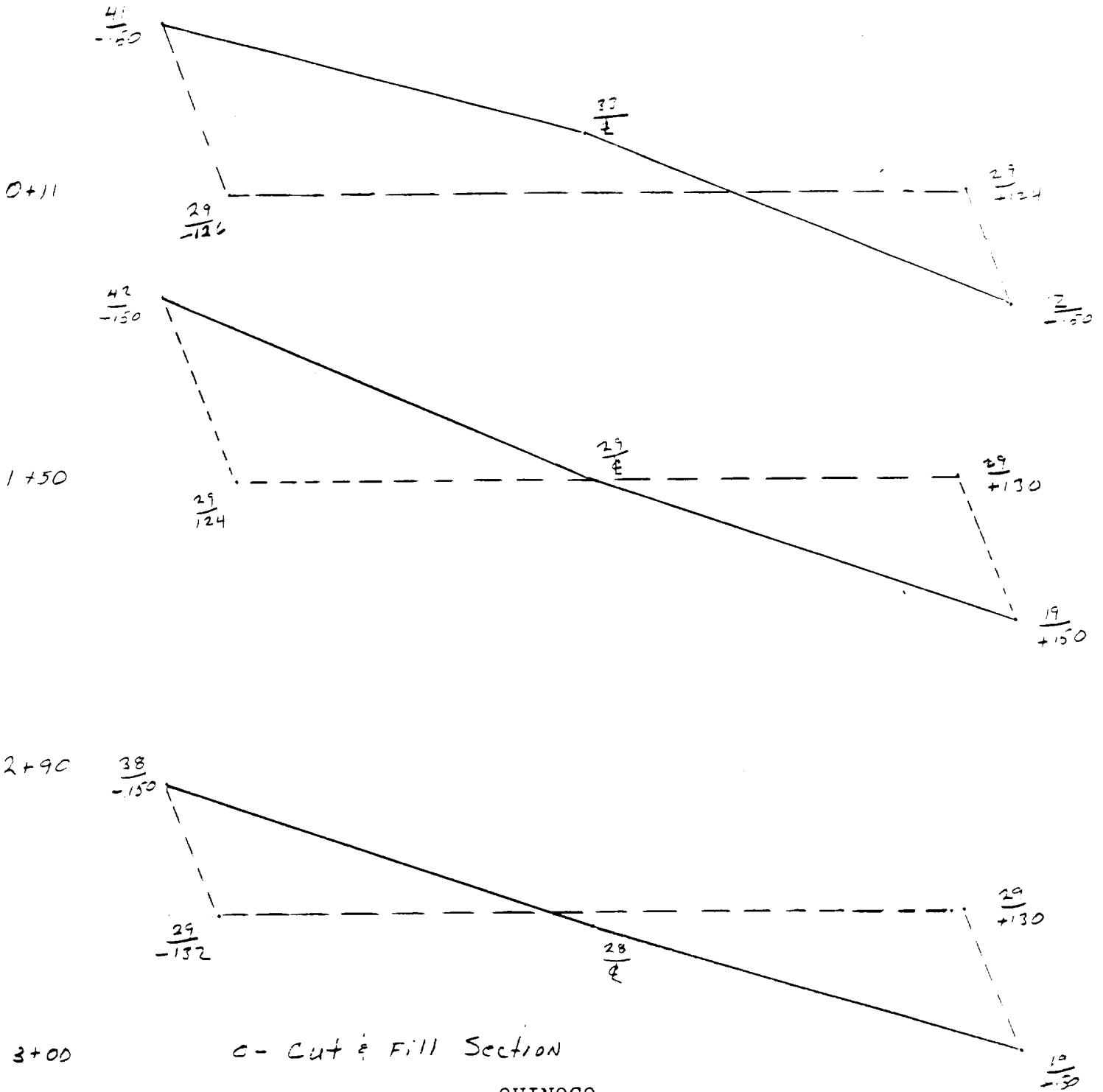
NOTE FINISH ELEV. 6529

QUINOCO
STATE #5

NOTE SCALE: HORZ. 1"=50'
VERT. 1"=10'

2+00

O-CUT & FILL SECTION



TOP SOIL.....1667 CU YDS.
AVERAGE CUT.....9221 CU YDS.
AVERAGE FILL.....6730 CU YDS.
PIT EXCAVATION.....3118 CU YDS.

3+00