

UNITED STATES
DEPARTMENT OF THE INTERIOR
BUREAU OF LAND MANAGEMENT

SUNDRY NOTICES AND REPORTS ON WELLS

1. TYPE OF WELL GAS		5. LEASE NUMBER SF-078508	
2. OPERATOR MERIDIAN OIL INC.		6. IF INDIAN, ALL. OR TRIBE NAME	
3. ADDRESS & PHONE NO. OF OPERATOR P O BOX 4289 FARMINGTON, NM 87499		7. UNIT AGREEMENT NAME	
4. LOCATION OF WELL 1855' FSL 1040' FWL		8. FARM OR LEASE NAME NORDHAUS	
		9. WELL NO. 713	
		10. FIELD, POOL, OR WILDCAT BASIN FRUITLAND COAL	
		11. SEC. T. R. M OR BLK. L SEC. 11 T31N R09W NMPM	
14. PERMIT NO.	15. ELEVATIONS 6461' GL	12. COUNTY SAN JUAN	13. STATE NM
16. SUBSEQUENT REPORT OF: Amended Application for Permit to Drill <i>Operator & Name Change</i>			
17. Describe proposed or completed operations			

Reference is made to Union Texas Petroleum's Application for Permit to Drill the Nordhaus 11 #2 approved 03-19-90.

Meridian Oil Inc. will operate and drill this well as the Nordhaus #713 at 1855' FSL and 1040' FWL of Section 11 of Township T31N and Range R09W.

Submitted for review:

- C102
- Operations Plan
- BOP Diagrams
- Location Laydown
- Cut and Fill Diagram
- Facilities Diagram

RECEIVED
AUG 3 1990
OIL CON. DIV.

18. AUTHORIZED BY: *[Signature]*
REGULATORY AFFAIRS

NOTE: THIS FORMAT IS ISSUED IN LIEU OF US BLM FORM 3160-5.

(This space for Federal or State office use)

APPROVED BY
CONDITION OF APPROVAL, IF ANY:

TITLE

NMOCD

DATE

7-10-90
DATE

APPROVED

DATE

Submit to Appropriate
District Office
State Leases - 4 copies
Fee Leases - 3 copies

State of New Mexico
Energy, Minerals and Natural Resources Department

Form C-102
Revised 1-1-89

OIL CONSERVATION DIVISION

P.O. Box 2088
Santa Fe, New Mexico 87504-2088

DISTRICT I

P.O. Box 1980, Hobbs, NM 88240

DISTRICT II

P.O. Drawer DD, Artesia, NM 88210

DISTRICT III

1000 Rio Brazos Rd., Aztec, NM 87410

WELL LOCATION AND ACREAGE DEDICATION PLAT

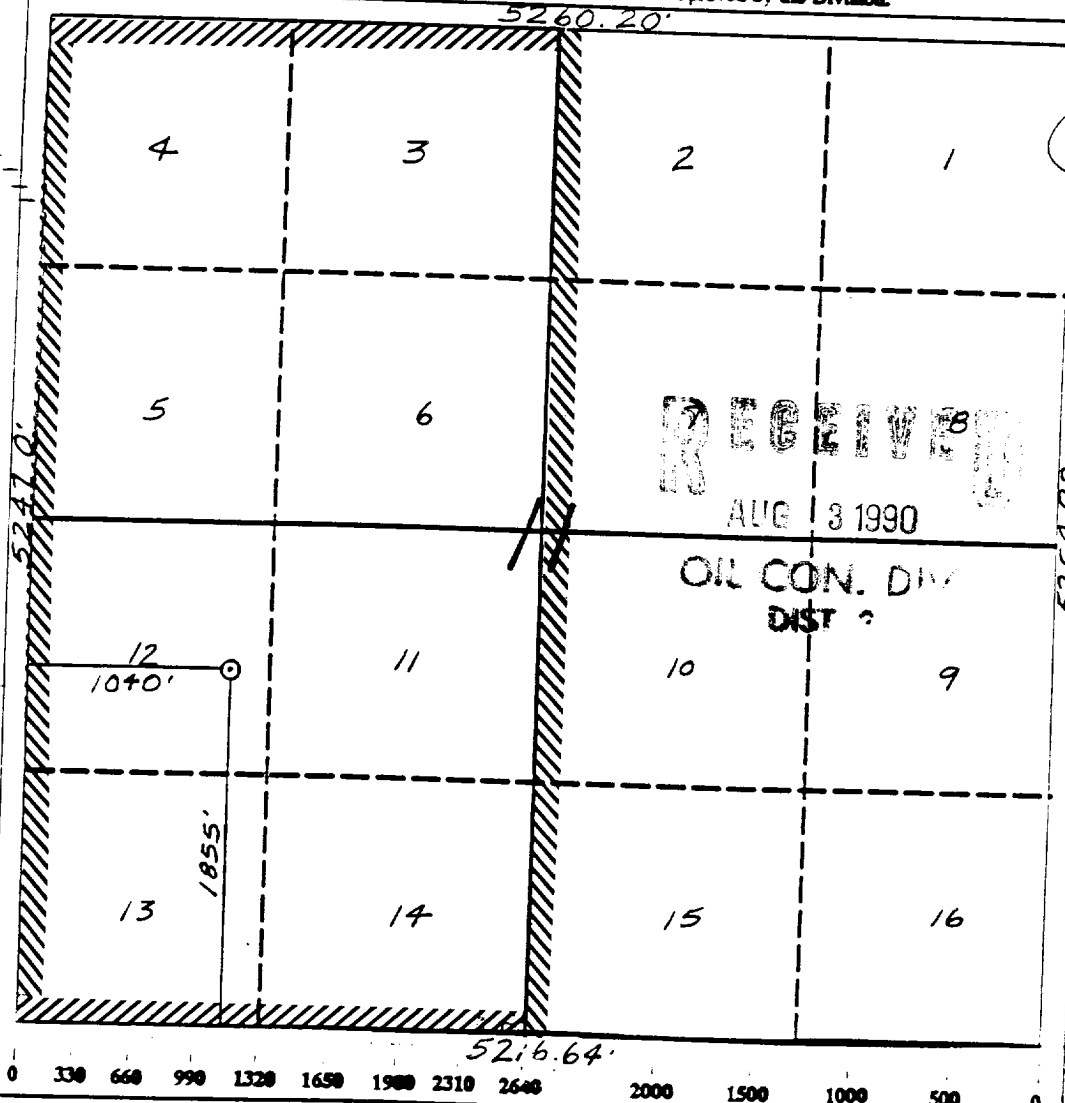
All Distances must be from the outer boundaries of the section

Operator Meridian Oil Inc.			Lease Nordhaus (SF-078508)		Well No. 713
Unit Letter L	Section 11	Township 31 North	Range 9 West	County San Juan	
Actual Footage Location of Well: 1855 feet from the South line and 1040 feet from the West line					
Ground level Elev. 6461'		Producing Formation Fruitland Coal	Pool Basin	Dedicated Acreage: 315.56 Acres	

1. Outline the acreage dedicated to the subject well by colored pencil or hatchure marks on the plat below.
2. If more than one lease is dedicated to the well, outline each and identify the ownership thereof (both as to working interest and royalty).
3. If more than one lease of different ownership is dedicated to the well, have the interest of all owners been consolidated by communitization, unitization, force-pooling, etc.?
☐ Yes ☐ No If answer is "yes" type of consolidation _____

If answer is "no" list the owners and tract descriptions which have actually been consolidated. (Use reverse side of this form if necessary.)

No allowable will be assigned to the well until all interests have been consolidated (by communitization, unitization, force-pooling, or otherwise) or until a non-standard unit, eliminating such interest, has been approved by the Division.



OPERATOR CERTIFICATION

I hereby certify that the information contained herein is true and complete to the best of my knowledge and belief.

Signature _____

Printed Name:
Peggy Bradfield

Position:
Regulatory Affairs

Company:
Meridian Oil Inc.

Date:
7-10-90

SURVEYOR CERTIFICATION

I hereby certify that the well location shown on this plat was plotted from field notes of actual surveys made by me or under my supervision, and that the same is true and correct to the best of my knowledge and belief.

Date Surveyed:
7-2-90

Signature _____

Professional Surveyor
NEW MEXICO
6857
6857

Certificate No. _____
Neale C. Edwards

DATE: JUL 10, 1990

Well Name: 713 NORDHAUS
 Sec. 11 T31N R09W
 BASIN FRUITLAND COAL

1855' FSL 1040' FWL
 SAN JUAN NEW MEXICO
 Elevation 6461' GL

Formation tops: Surface- SAN JOSE
 Ojo Alamo- 1717
 Kirtland- 1814
 Fruitland- 2933
 Fruitland Coal Top- 3129
 Fruitland Coal Base- 3316
 Pictured Cliffs- 3319

Intermediate TD- 3110
 Total Depth- 3317

Logging Program: Mud logs from intermediate to total depth.

Mud Program:	Interval	Type	Weight	Visc.	Fl. Loss
	0 - 350	Spud	8.4 - 8.9	40-50	no control
	350 - 3110	Non-dispersed	8.4 - 9.1	30-60	no control
	3110 - 3317	Formation Water	8.4		no control

Casing Program:	Hole Size	Depth Interval	Csg. Size	Weight	Grade
	12 1/4"	0 - 350	9 5/8"	32.3#	H-40
	8 3/4"	0 - 3110	7"	20.0#	K-55
	6 1/4"	3060 - 3317	5 1/2"	15.5#	K-55
Tubing Program:		0 - 3317	2 7/8"	6.5#	J-55

Float Equipment: 9 5/8" surface casing - saw tooth guide shoe. Centralizers will be run in accordance with Onshore Order #2.

7" intermediate casing - guide shoe and self-fill insert float valve. Three centralizers run every other joint above shoe. Run insert float one joint above the guide shoe. Two turbolizing type centralizers - one below and one into the base of the Ojo Alamo @ 1814'. Standard centralizers thereafter every fourth joint up to the base of the surface pipe.

5 1/2" production casing - float shoe on bottom and a pre-drilled liner run to the 7" casing with a minimum 50' overlap. Liner hanger is a double slip grip type.

Wellhead Equipment: 9 5/8" x 7" x 2 7/8" x 11" 3000 psi xmas tree assembly.

Cementing:

9 5/8" surface casing - cement with 279 sacks of class "B" cement with 1/4# flocele/sack and 3% calcium chloride (329 cu ft. of slurry, 200% excess to circulate to surface). WOC 12 hours. Test casing to 600 psi for 30 minutes.

7" intermediate casing - lead with 456 sacks of 65/35 class "B" poz with 6% gel, 2% calcium chloride and 1/2 cu ft. Perlite/sack (10.3 gallons of water/sack) tail with 100 sacks of class "B" with 2% calcium chloride. 999 cu ft. of slurry, 110% excess to circulate to surface. If hole conditions permit, a 600 ft spacer will be run ahead of the cement slurry to avoid mud contamination of the cement. WOC 12 hours. If cement does not circulate to surface, a temperature log will be run after 8 hours to determine TOC.

5 1/2" liner - do not cement.