

OIL CONSERVATION DIVISION

P. O. BOX 2088

SANTA FE, NEW MEXICO 87501

STATE OF NEW MEXICO
ENERGY AND MINERALS DEPARTMENTForm C-102
Revised 10-1-78

All distances must be from the outer boundaries of the Section.

Operator Amoco Production Company		Lease Barrett Gas Com /A/		Well No. #1
Unit Letter K	Section 19	Township 31N	Range 9W	County San Juan

Actual Well Location of Wells

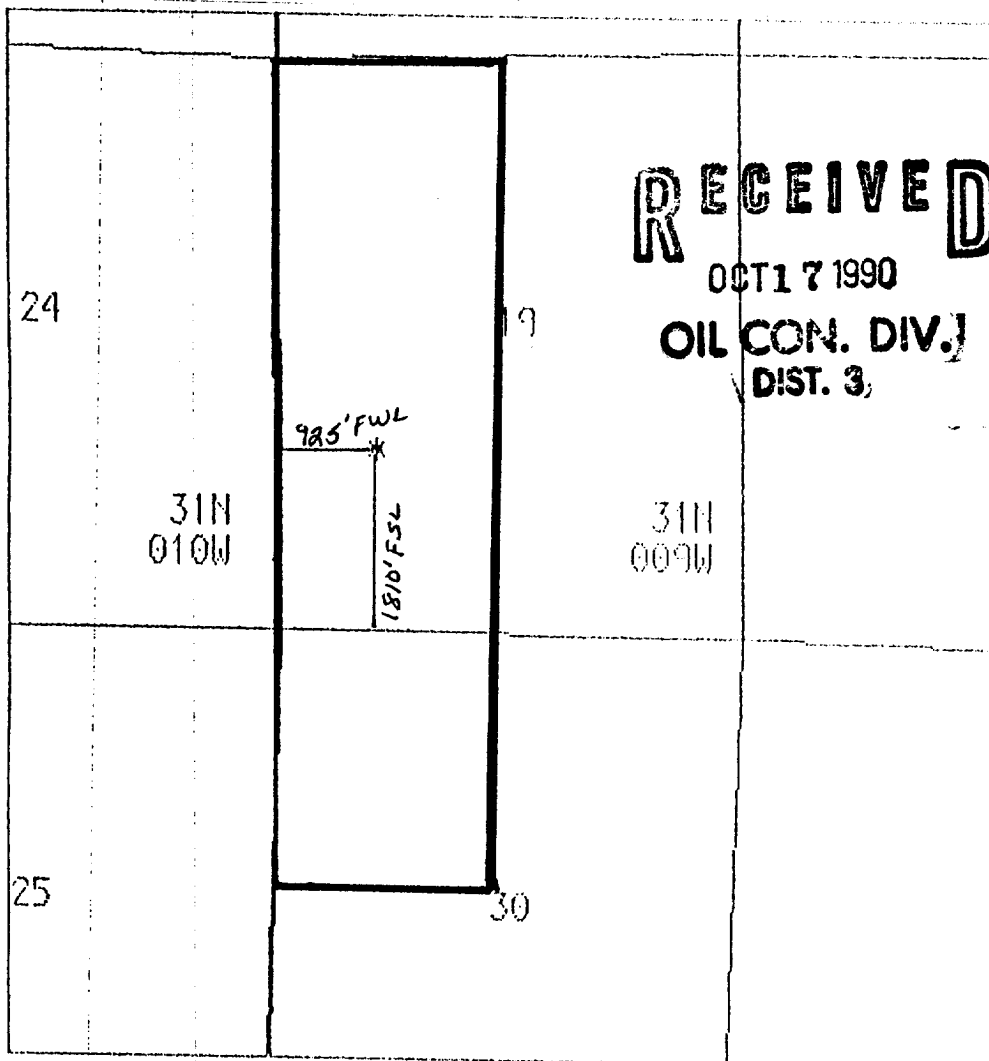
1810'	feet from the South	line and	925'	feet from the West	line
Ground Level Elev. 5676'	Producing Formation Fruitland Coal	Pool Basin Fruitland Coal Gas	Dedicated Acreage: W/2 Sec. 19 NW/4 Sec 30 309.09 Acres		

1. Outline the acreage dedicated to the subject well by colored pencil or hatchure marks on the plat below.
2. If more than one lease is dedicated to the well, outline each and identify the ownership thereof (both as to working interest and royalty).
3. If more than one lease of different ownership is dedicated to the well, have the interests of all owners been consolidated by communitization, unitization, force-pooling, etc?

☐ Yes ☐ No If answer is "yes," type of consolidation _____

If answer is "no," list the owners and tract descriptions which have actually been consolidated. (Use reverse side of this form if necessary.) _____

No allowable will be assigned to the well until all interests have been consolidated (by communitization, unitization, forced-pooling, or otherwise) or until a non-standard unit, eliminating such interests, has been approved by the Division.



CERTIFICATION

I hereby certify that the information contained herein is true and complete to the best of my knowledge and belief.

John Hampton
Name
John Hampton

Position
Sr. Staff Admin. Supv.

Company
Amoco Production Company

Date
9/26/90

I hereby certify that the well location shown on this plat was plotted from field notes of actual surveys made by me or under my supervision, and that the same is true and correct to the best of my knowledge and belief.

Date Surveyed

"on file"

Registered Professional Engineer
and/or Land Surveyor

Certificate No. _____

Sm

State of New Mexico
Energy, Minerals and Natural Resources Department

OIL CONSERVATION DIVISION

P.O. Box 2088
Santa Fe, New Mexico 87504-2088

Form C-102
Revised 1-1-89

RECEIVED

OCT 17 1990

OIL CON. DIV.
DIST. 3

Submit to Appropriate
District Office
State Lease - 4 copies
Fee Lease - 3 copies

DISTRICT I
P.O. Box 1980, Hobbs, NM 88240

DISTRICT II
P.O. Drawer DD, Artesia, NM 88210

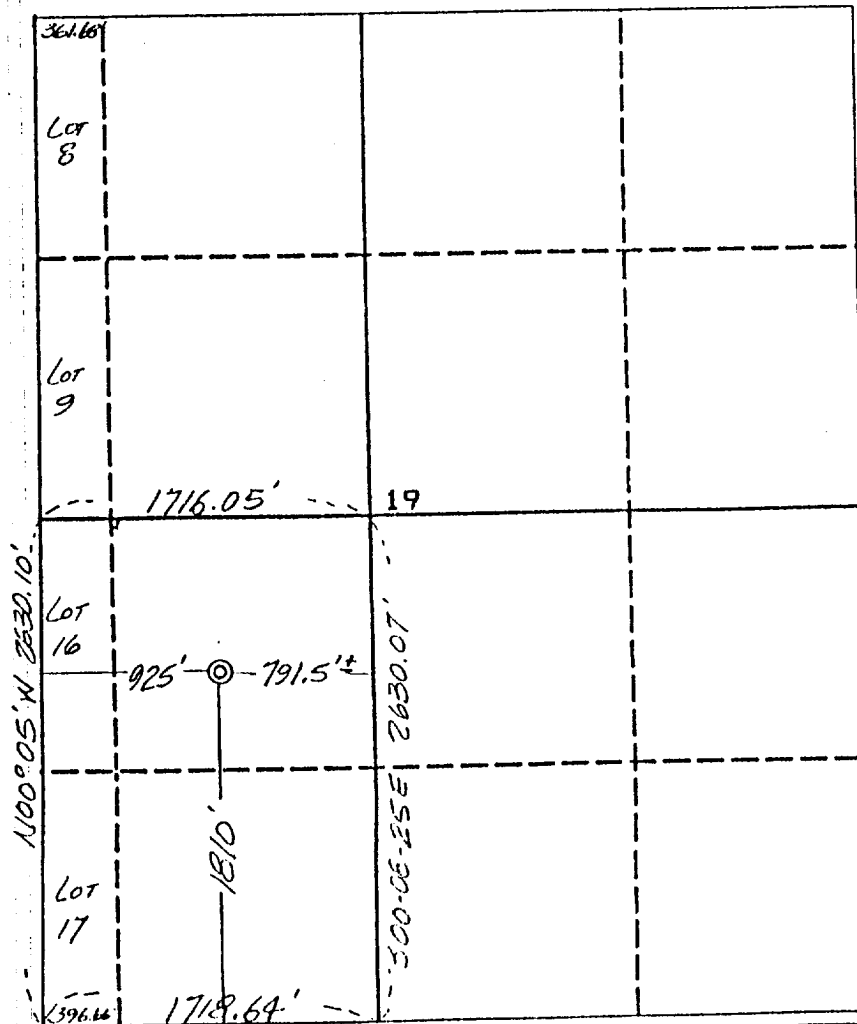
DISTRICT III
1000 Rio Brazos Rd., Aztec, NM 87410

WELL LOCATION AND ACREAGE DEDICATION PLAT

All Distances must be from the outer boundaries of the section

Operator AMOCO PRODUCTION COMPANY			Lease BARRETT GAS COM /A/		Well No. # 1
Unit Letter K	Section 19	Township 31 NORTH	Range 9 WEST	County SAN JUAN	
Actual Footage Location of Well: 1810 feet from the SOUTH line and 925 feet from the WEST line					
Ground level Elev. 6676	Producing Formation		Pool	Dedicated Acreage: Acres	

1. Outline the acreage dedicated to the subject well by colored pencil or hatchure marks on the plat below.
2. If more than one lease is dedicated to the well, outline each and identify the ownership thereof (both as to working interest and royalty).
3. If more than one lease of different ownership is dedicated to the well, have the interest of all owners been consolidated by communitization, unitization, force-pooling, etc.?
☐ Yes ☐ No If answer is "yes" type of consolidation _____
If answer is "no" list the owners and tract descriptions which have actually been consolidated. (Use reverse side of this form if necessary).
No allowable will be assigned to the well until all interests have been consolidated (by communitization, unitization, forced-pooling, or otherwise) or until a non-standard unit, eliminating such interest, has been approved by the Division.



OPERATOR CERTIFICATION

I hereby certify that the information contained herein is true and complete to the best of my knowledge and belief.

Signature

Printed Name

Position

Company

Date

SURVEYOR CERTIFICATION

I hereby certify that the well location shown on this plat was plotted from field notes of actual surveys made by me or under my supervision, and that the same is true and correct to the best of my knowledge and belief.

Date Surveyed

March 30, 1990

Signature & Seal of
Professional Surveyor

GARY D. VANN
NEW MEXICO
REGISTERED PROFESSIONAL LAND SURVEYOR
7016
Gary D. Vann
7016