

Submit to Appropriate
District Office
State Lease - 6 copies
Fee Lease - 5 copies

State of New Mexico
Energy, Minerals and Natural Resources Department

Form C-101
Revised 1-1-89

OIL CONSERVATION DIVISION
P.O. Box 2088
Santa Fe, New Mexico 87504-2088

DISTRICT I
P.O. Box 1980, Hobbs, NM 88240

DISTRICT II
P.O. Drawer DD, Artesia, NM 88210

DISTRICT III
1000 Rio Brazos Rd., Aztec, NM 87410

API NO. (assigned by OCD on New Wells)
30-045-27841

5. Indicate Type of Lease
STATE FEE

6. State Oil & Gas Lease No.

APPLICATION FOR PERMIT TO DRILL, DEEPEN, OR PLUG BACK

1a. Type of Work:
DRILL RE-ENTER DEEPEN PLUG BACK

b. Type of Well:
OIL WELL GAS WELL OTHER coal seam SINGLE ZONE MULTIPLE ZONE

2. Name of Operator
Amoco Production Company ATTN: J.L. Hampton

3. Address of Operator
P. O. Box 800 Denver, Co. 80201

4. Well Location
Unit Letter N : 1180' Feet From The South Line and 1500' Feet From The West Line
Section 32 Township 30N Range 9W NMPM San Juan County

7. Lease Name or Unit Agreement Name
State Gas Com "CB"

8. Well No.
#3

9. Pool name or Wildcat
Basin Fruitland Coal Gas

10. Proposed Depth
2510' (TD)

11. Formation
Fruitland Coal

12. Rotary or C.T.
Rotary

13. Elevations (Show whether DF, RT, GR, etc.)
5738' GR

14. Kind & Status Plug. Bond
State-wide

15. Drilling Contractor
unknown

16. Approx. Date Work will start
As soon as permitted

17. PROPOSED CASING AND CEMENT PROGRAM w/320

SIZE OF HOLE	SIZE OF CASING	WEIGHT PER FOOT	SETTING DEPTH	SACKS OF CEMENT	EST. TOP
12 1/4"	8 5/8"	24#	250'	250 cf (cement to surface)	
7 7/8"	5 1/2"	17#	2510' (TD)	703 cf (cement to surface)	

See the attached drilling program.

APPROVAL EXPIRES 12-5-90
UNLESS DRILLING IS COMMENCED.
SPUD NOTICE MUST BE SUBMITTED
WITHIN 10 DAYS.

RECEIVED

JUN 5 1990

OIL CON. DIV
DIST. 3

IN ABOVE SPACE DESCRIBE PROPOSED PROGRAM: IF PROPOSAL IS TO DEEPEN OR PLUG BACK, GIVE DATA ON PRESENT PRODUCTIVE ZONE AND PROPOSED NEW PRODUCTIVE ZONE. GIVE BLOWOUT PREVENTER PROGRAM, IF ANY.

I hereby certify that the information above is true and complete to the best of my knowledge and belief.

SIGNATURE J.L. Hampton/CB TITLE Sr. Staff Admin. Supv. DATE 6/1/90
(303)
TYPE OR PRINT NAME J.L. Hampton TELEPHONE NO. 830-5119

(This space for State Use)

APPROVED BY [Signature] TITLE SUPERVISOR DISTRICT # 3 DATE JUN 05 1990
CONDITIONS OF APPROVAL, IF ANY:

Amoco proposes to drill the well to further develop the Fruitland Coal reservoir. The well will be drilled to the surface casing point using native mud. The well will then be drilled to the total depth with a non-dispersed mud system. The attached modified 12" 3000 psi blowout preventer will be used (please see attached BOP information). The well will be completed in the Fruitland Coal with a fracture stimulation.

<u>Quantity</u>	<u>Size</u>	<u>Weight</u>	<u>Description</u>	<u>Cementing Program</u>
<u>SURFACE CASING</u>				
250'	8-5/8"	24#	K55 ST&C	250 cf Class B, 2% CaCl ₂ 15.6 ppg
<u>INTERMEDIATE STRING</u>				
2510'	5.5"	17#	K55 ST&C	703 cf Class B, 65:35:6 10% salt, .25% dispersant 13.1 ppg 118 cf Class B, 2% CaCl ₂ 15.6 ppg

The above casing design is based upon a 11.0#/gal mud weight.

EVALUATION

The log surveys (FDC/GR/CAL, Microlog) will be run per attached drilling and completion program.

clbmemo2 disk 205

RECEIVED
 JUN 5 1990
 OIL CON. DIV.
 DIST. 3

Submit to Appropriate District Office
 State Lease - 4 copies
 Fee Lease - 3 copies

State of New Mexico
 Energy, Minerals and Natural Resources Department

Form C-102
 Revised 1-1-89

OIL CONSERVATION DIVISION
 P.O. Box 2088
 Santa Fe, New Mexico 87504-2088

RECEIVED

JUN 5 1990

DISTRICT I
 P.O. Box 1980, Hobbs, NM 88240

DISTRICT II
 P.O. Drawer DD, Artesia, NM 88210

DISTRICT III
 1000 Rio Brazos Rd., Aztec, NM 87410

WELL LOCATION AND ACREAGE DEDICATION PLAT
 All Distances must be from the outer boundaries of the section

OIL CON. DIV

DIST. 3
 # 3

Operator AMOCO PRODUCTION COMPANY			Lease STATE GAS COM /CB/		DIST. 3 # 3
Unit Letter N	Section 32	Township 30 NORTH	Range 9 WEST	County SAN JUAN	

Actual Footage Location of Well:
 1180 feet from the SOUTH line and 1500 feet from the WEST line

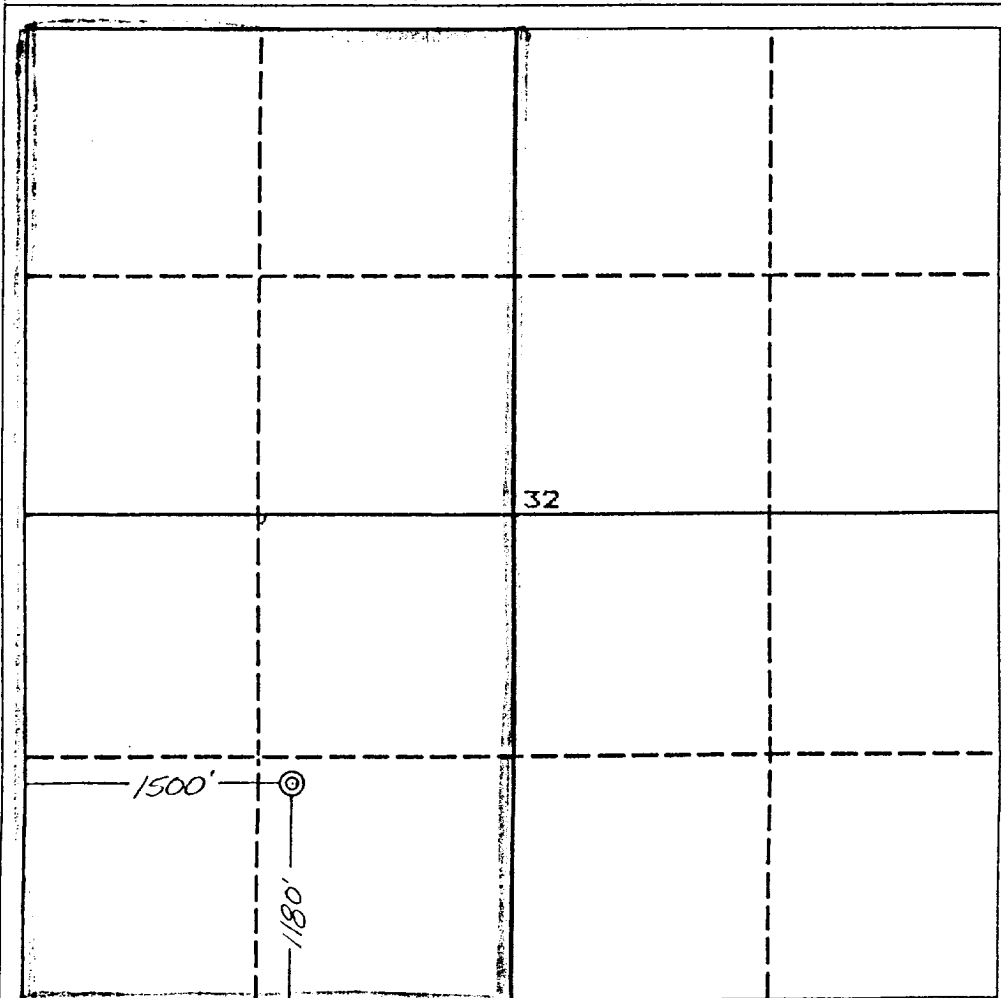
Ground level Elev. 5738	Producing Formation Fruitland Coal	Pool Basin Fruitland Coal Gas	Dedicated Acreage 320.0 Acres
-----------------------------------	--	---	--

- Outline the acreage dedicated to the subject well by colored pencil or hachure marks on the plat below.
- If more than one lease is dedicated to the well, outline each and identify the ownership thereof (both as to working interest and royalty).
- If more than one lease of different ownership is dedicated to the well, have the interest of all owners been consolidated by communitization, unitization, force-pooling, etc.?

Yes No If answer is "yes" type of consolidation _____

If answer is "no" list the owners and tract descriptions which have actually been consolidated. (Use reverse side of this form if necessary.) _____

No allowable will be assigned to the well until all interests have been consolidated (by communitization, unitization, forced-pooling, or otherwise) or until a non-standard unit, eliminating such interest, has been approved by the Division.



OPERATOR CERTIFICATION

I hereby certify that the information contained herein is true and complete to the best of my knowledge and belief.

Signature: *J.L. Hampton*
 Printed Name: **J.L. Hampton**
 Position: **Sr. Staff Admin. Supv.**
 Company: **Amoco Prod. Company**
 Date: **3/20/90**

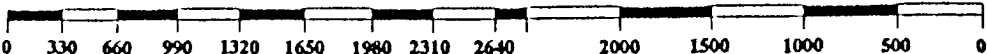
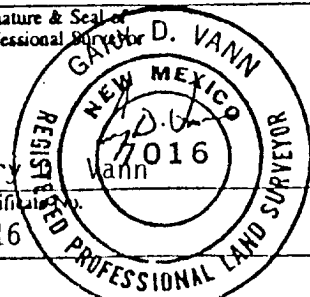
SURVEYOR CERTIFICATION

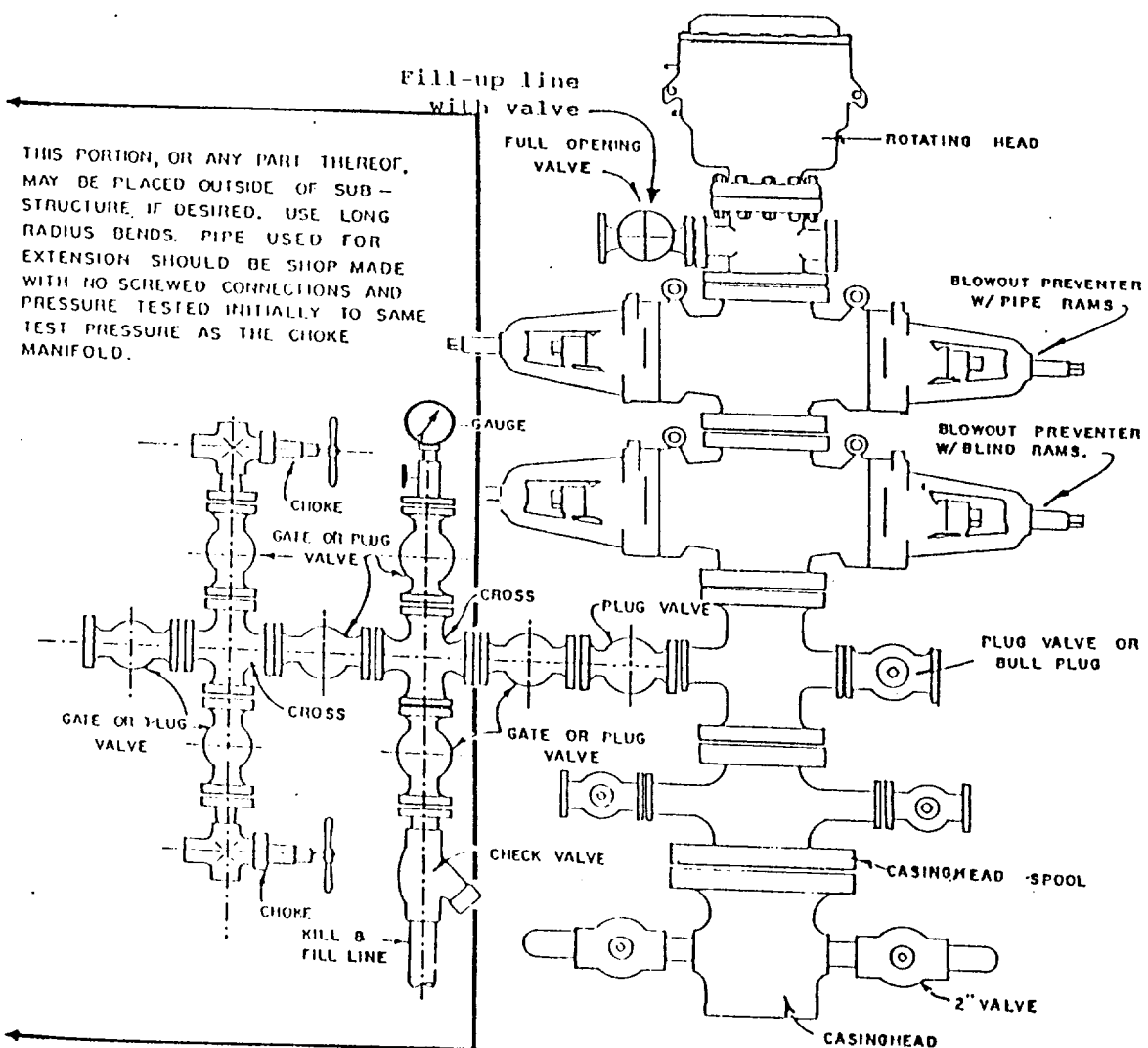
I hereby certify that the well location shown on this plat was plotted from field notes of actual surveys made by me or under my supervision, and that the same is true and correct to the best of my knowledge and belief.

Date Surveyed: **March 15, 1990**

Signature & Seal of Professional Surveyor: *Gary D. Vann*

Gary D. Vann
 Registered Professional Land Surveyor
 7016

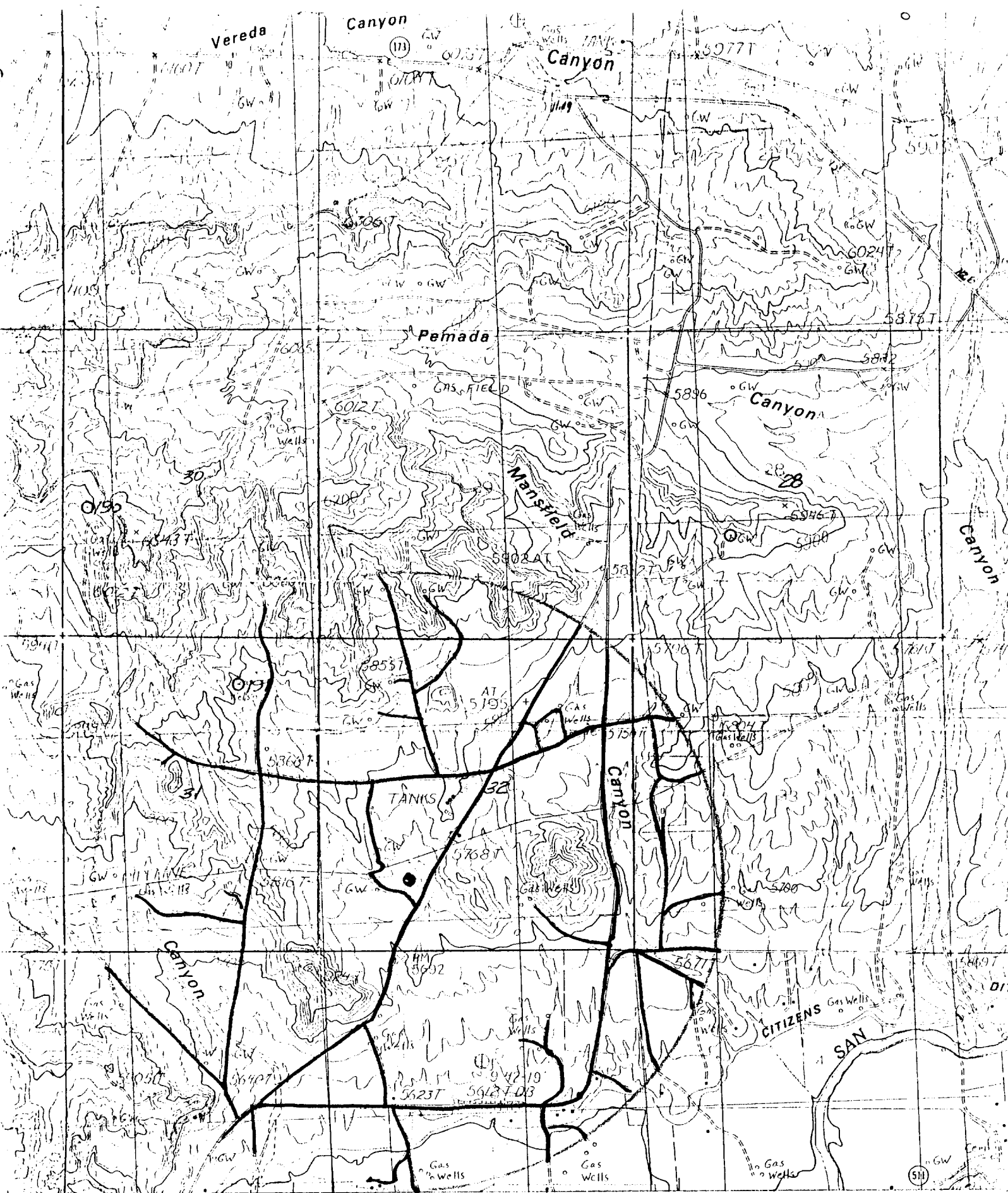




THIS PORTION, OR ANY PART THEREOF, MAY BE PLACED OUTSIDE OF SUB-STRUCTURE, IF DESIRED. USE LONG RADIUS BENDS. PIPE USED FOR EXTENSION SHOULD BE SHOP MADE WITH NO SCREWED CONNECTIONS AND PRESSURE TESTED INITIALLY TO SAME TEST PRESSURE AS THE CHOKER MANIFOLD.

BLOWOUT PREVENTER HOOKUP

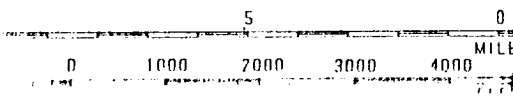
RECEIVED
 JUN 5 1990
 OIL CON. DIV.
 DIST. 3



R10W R9W 248

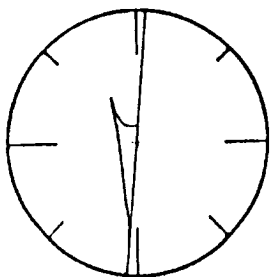
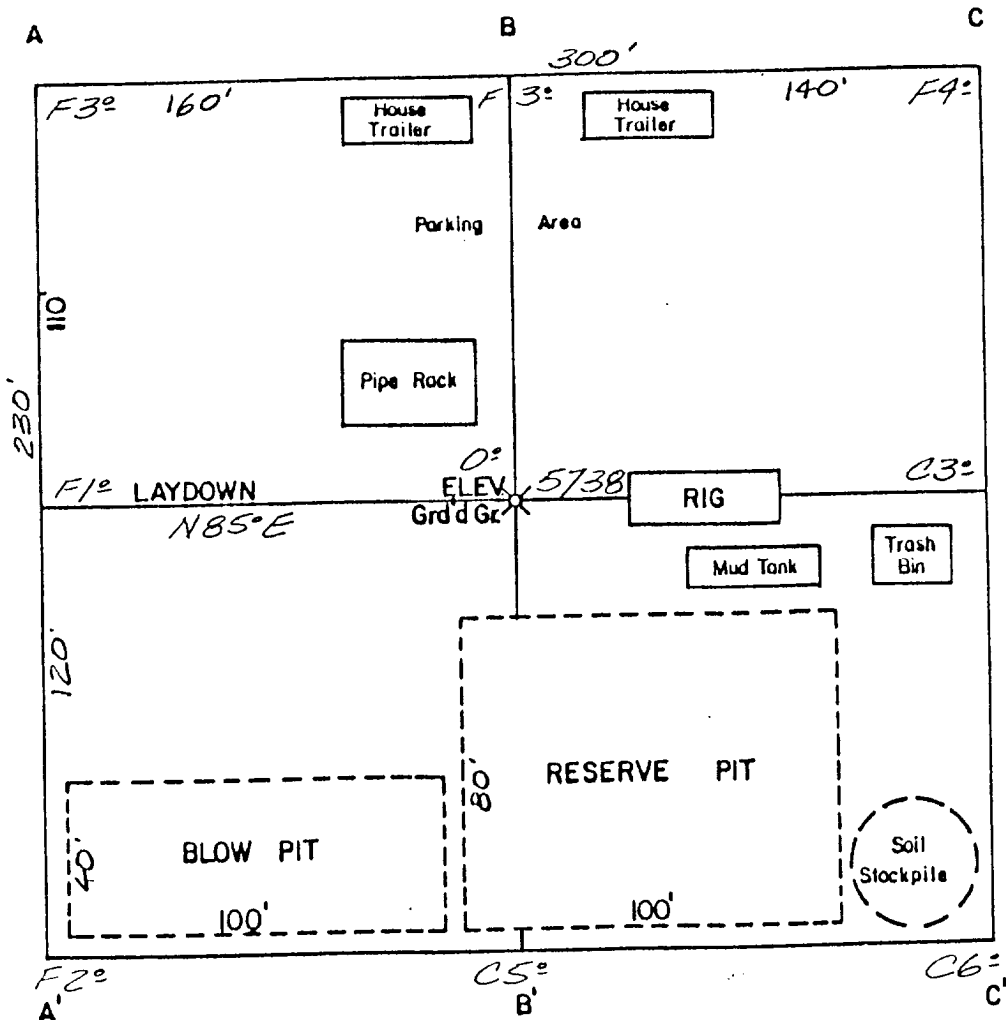
AMOCO PRODUCTION COMPANY
 SCALE 1: STATE GAS COM /CB/ # 3
 1180' F/SL 1500' F/WL
 SEC. 32, T30N, R9W, NMPM
 SAN JUAN COUNTY, NEW MEXICO

47' 30" 251
 252
 ——— NEW ROAD
 ——— EXISTING ROADS



PROFILE FOR

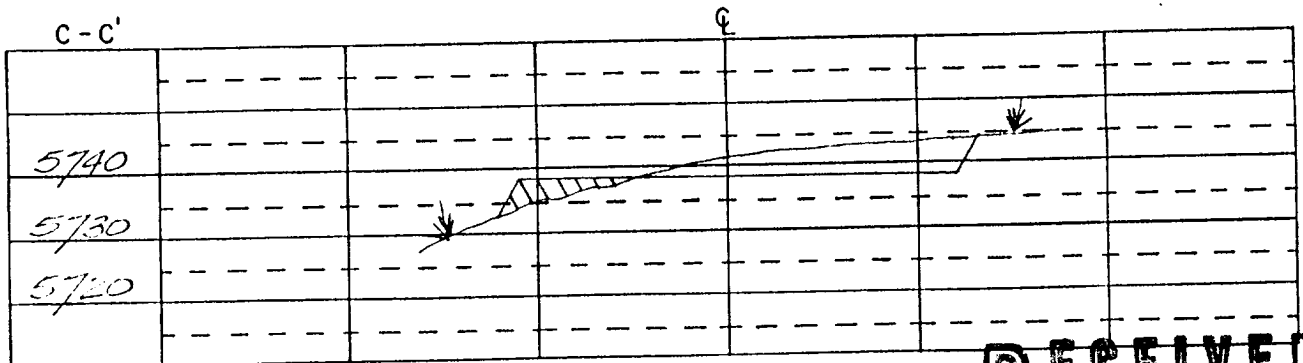
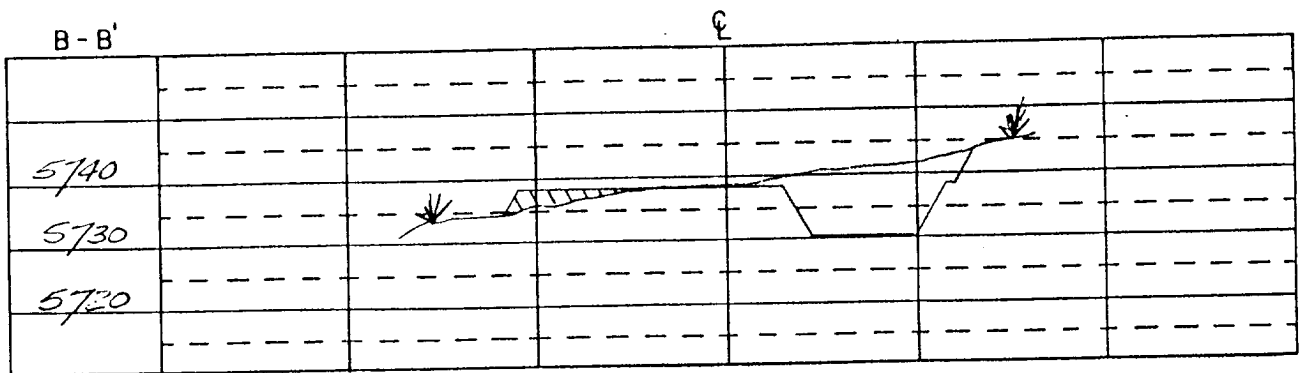
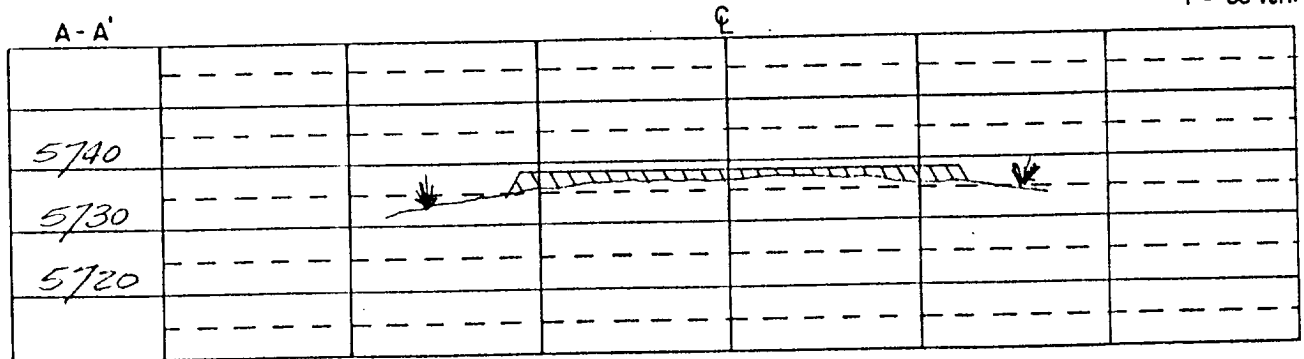
AMOCO PRODUCTION COMPANY
 STATE GAS COM /CB/ # 3
 1180' F/SL 1500' F/WL
 SEC. 32, T30N, R9W, NMPM
 SAN JUAN COUNTY, NEW MEXICO



RECEIVED
 JUN 5 1990
 OIL CON. DIV.
 DIST. 3

AMOCO PRODUCTION COMPANY
 STATE GAS COM /CB/ # 3
 1180' F/SL 1500' F/WL
 SEC. 32, T30N, R9W, NMPM
 SAN JUAN COUNTY, NEW MEXICO

SCALE: 1" = 100' Horiz.
 1" = 30' Vert.

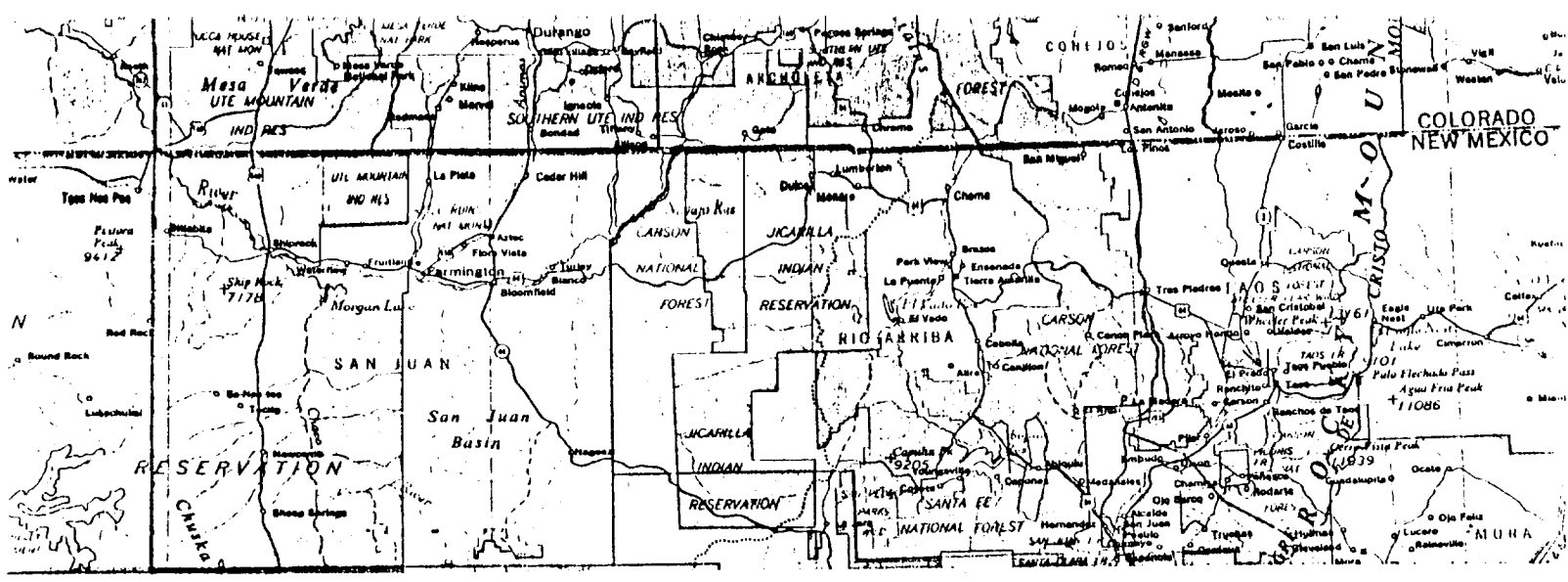


RECEIVED

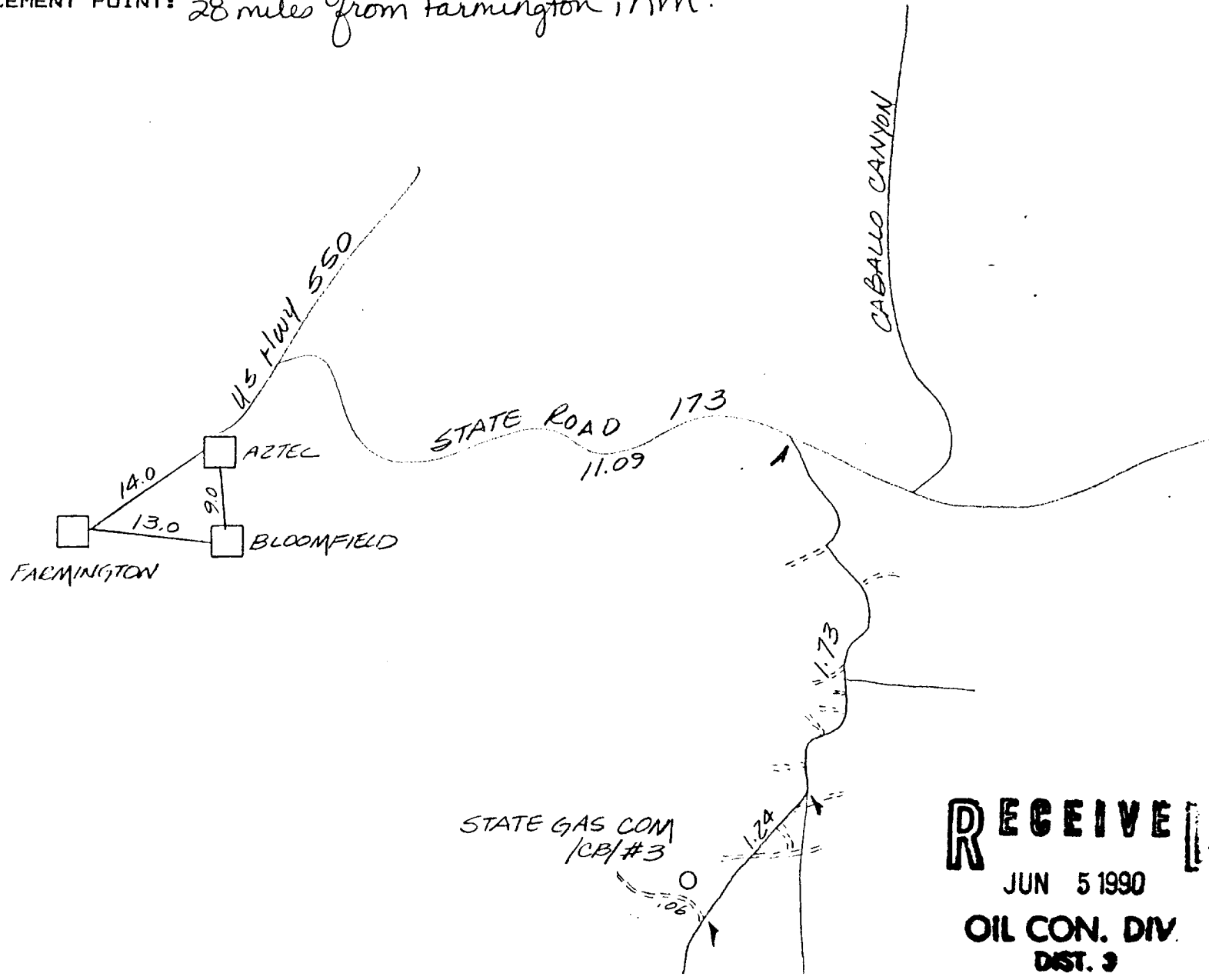
JUN 5 1990

OIL CON. DIV.

DIST 3



STATE GAS COM /CB/ # 3
 1180' F/SL 1500' F/WL
 SEC. 32, T30N, R9W, NMPM
 RAIL POINT: 156 miles from Montrose, Co.
 MUD POINT: 14 miles from Aztec, NM
 CEMENT POINT: 28 miles from Farmington, NM.



RECEIVED
 JUN 5 1990
 OIL CON. DIV.
 DIST. 9