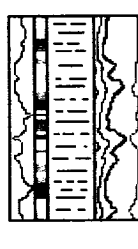
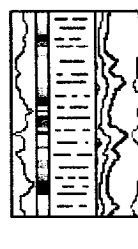


## SOFTROCK GEOLOGICAL SERVICES, INC.



591 County Rd. 233 Durango, CO 81301

(970) 247-8868 fax 247-5108



Scale 1:240 (5"=100') Imperial

30-045-28348

Well Name: San Juan 32-7 Unit No. 231(Deepening)  
 Location: Sec. 17 T31N R7W  
 Licence Number:  
 Spud Date: April 7, 2002  
 Surface Coordinates: 1474' FSL  
 1234' FWL

Region: San Juan Co, NM  
 Drilling Completed: April 7, 2002

Bottom Hole Coordinates:  
 Ground Elevation (ft): 6449' K.B. Elevation (ft): 6465'  
 Logged Interval (ft): 3190' To: 3360' Total Depth (ft): 3360'  
 Formation: Fruitland Formation  
 Type of Drilling Fluid: Air / Mist  
 Printed by MUD.LOG from WellSight Systems Inc. 1-800-447-1534 www.wellsight.com

## OPERATOR

Company: Phillips Petroleum Company  
 Address: 5525 Hwy 64  
 Farmington, NM 87401

## GEOLOGIST

Name: Peter D. Falk & Bobby Bradley  
 Company: Softrock Geological Services, Inc.  
 Address: 591 CR 233  
 Durango, CO 81301  
 (970) 247-8868 247-5108 fax

## Contractor:

Operator: Key Energy Services Rig #18  
 Drilling Supervisor: David Green

## Instruments:

FID Chromatograph  
 FID Total Gas Detector

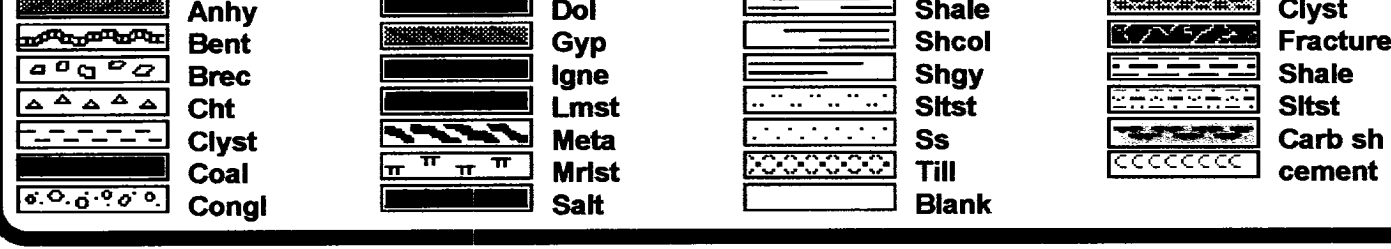
## Hole Info.:

Hole Size:  
 Surface: Unknown  
 Intermediate: Unknown  
 Production: 3000' to TD 6-1/4"

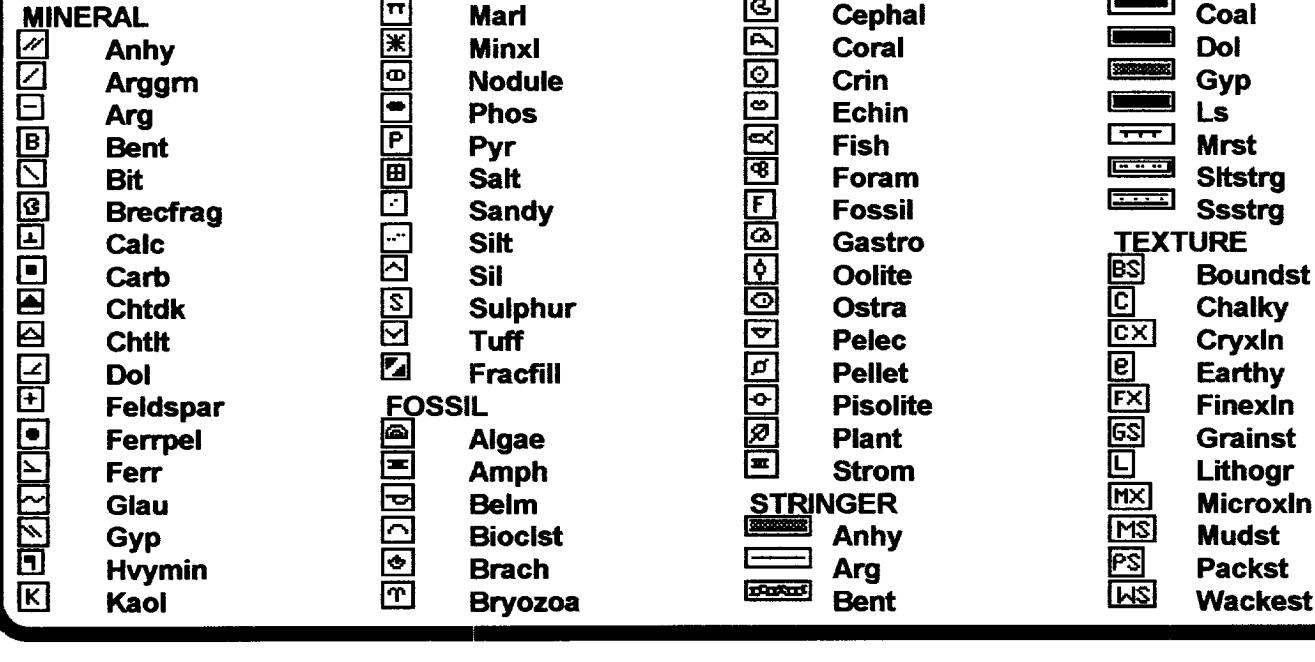
Casing Size:  
 Surface 9-5/8" set at 224'  
 Intermediate 7" set at 3000'

NOTE: This mudlog represents the deepened interval only. See Rocky Mountain Geo-Engineering mudlog for up-hole information.

## ROCK TYPES



## ACCESSORIES



## OTHER SYMBOLS

