

UNITED STATES  
DEPARTMENT OF THE INTERIOR  
BUREAU OF LAND MANAGEMENT

APPLICATION FOR PERMIT TO DRILL, DEEPEN, OR PLUG BACK

1a. TYPE OF WORK  
DRILL ☒ DEEPEN ☐ PLUG BACK ☐

b. TYPE OF WELL  
OIL WELL ☐ GAS WELL ☒ OTHER ☐  
SINGLE ZONE ☒ MULTIPLE ZONE ☐

2. NAME OF OPERATOR  
Phillips Petroleum Company

3. ADDRESS OF OPERATOR  
300 W. Arrington, Suite 200, Farmington, NM 87401

4. LOCATION OF WELL (Report location clearly and in accordance with any State requirements.)  
At surface  
Unit P, 706' FSL & 985' FEL  
At proposed prod. zone  
Unit P, 706' FSL & 985' FEL

14. DISTANCE IN MILES AND DIRECTION FROM NEAREST TOWN OR POST OFFICE\*

16. NO. OF ACRES IN LEASE  
2537.27

18. DISTANCE FROM PROPOSED LOCATION\*  
TO NEAREST WELL, DRILLING, COMPLETED,  
OR APPLIED FOR, ON THIS LEASE, FT. 213' from #201

21. ELEVATIONS (Show whether DF, RT, GR, etc.)  
6488' (GL Unprepared)

23. PROPOSED CASING AND CEMENTING PROGRAM

SIZE OF HOLE	SIZE OF CASING	WEIGHT PER FOOT	SETTING DEPTH
12-1/4"	9-5/8"	36#, K-55	250'
8-3/4"	7"	23#, K-55	3034'
6-1/8"	5-1/2"	15.5# or 23#	2934'-3385'

\*If the coal is cleated, a 5-1/2", 23#, P-110 liner will be run in the open hole without being cemented.

\*If the coal is not cleated, the well will be stimulated and a 5-1/2", 15.5#, J-55 liner will be run without being cemented.

Unorthodox location and non-standard proration unit.  
Set for hearing - NMOCD

Mud Program and BOP Equipment: See Attached

IN ABOVE SPACE DESCRIBE PROPOSED PROGRAM: If proposal is to deepen or plug back, give data on present productive zone and proposed new productive zone. If proposal is to drill or deepen directionally, give pertinent data on subsurface locations and measured and true vertical depths. Give blowout preventer program, if any.

24. SIGNED L.M. Sanders TITLE Supv. Regulatory Affairs DATE 9/15/90

(This space for Federal or State office use)

PERMIT NO. \_\_\_\_\_ APPROVAL DATE \_\_\_\_\_

APPROVED BY \_\_\_\_\_ TITLE \_\_\_\_\_ DATE OCT 18 1990  
CONDITIONS OF APPROVAL, IF ANY:

Hold copy for NMOCD NMOCD  
\*See Instructions On Reverse Side

5. LEASE DESIGNATION AND SERIAL NO.  
SF-078996  
6. IF INDIAN, ALLOTTEE OR TRIBE NAME  
7. UNIT AGREEMENT NAME  
San Juan 32-7 Unit  
8. FARM OR LEASE NAME  
9. WELL NO.  
213  
10. FIELD AND POOL, OR WILDCAT  
Basin Fruitland Coal Gas  
11. SEC., T., R., N., OR BLK.  
AND SURVEY OR AREA  
P  
Sec. 7, T-31-N, R-7-W  
12. COUNTY OR PARISH  
San Juan  
13. STATE  
NM

17. NO. OF ACRES ASSIGNED  
TO THIS WELL  
329 AC 329.68  
20. ROTARY OR CABLE TOOLS  
Rotary

22. APPROX. DATE WORK WILL START\*  
Upon Approval

DRILLING OPERATIONS AUTHORIZED ARE  
SUBJECT TO COMPLIANCE WITH ATTACHED  
"GENERAL CONDITIONS"

RECEIVED  
OCT 25 1990  
OIL CON. DIV.  
DIST. 3

Submit to Appropriate  
District Office  
State Lease - 4 copies  
Fee Lease - 3 copies

State of New Mexico  
Energy, Minerals and Natural Resources Department

Form C-102  
Revised 1-1-89

OIL CONSERVATION DIVISION

P.O. Box 2088  
Santa Fe, New Mexico 87504-2088

DISTRICT I  
P.O. Box 1980, Hobbs, NM 88240

DISTRICT II  
P.O. Drawer DD, Artesia, NM 88210

DISTRICT III  
1000 Rio Brazos Rd., Aztec, NM 87410

WELL LOCATION AND ACREAGE DEDICATION PLAT

All Distances must be from the outer boundaries of the section

Operator <b>PHILLIPS PETROLEUM</b>		Lease <b>SAN JUAN 32-7 UNIT</b>		Well No. <b>213</b>
Unit Letter <b>P</b>	Section <b>7</b>	Township <b>T.31 N.</b>	Range <b>R.7 W.</b>	County <b>SAN JUAN COUNTY</b>
Footage Location of Well: <b>706</b> feet from the <b>SOUTH</b> line and <b>985</b> feet from the <b>EAST</b> line				
Ground level Elev. <b>6428</b>		Producing Formation <b>Fruitland</b>		Pool <b>Basin Fruitland Coal</b>
Dedicated Acreage: <b>320 325.68</b> Acres				

Outline the acreage dedicated to the subject well by colored pencil or hatchure marks on the plat below.

If more than one lease is dedicated to the well, outline each and identify the ownership thereof (both as to working interest and royalty).

If more than one lease of different ownership is dedicated to the well, have the interest of all owners been consolidated by communitization,

unitization, force-pooling, etc.?

☒ Yes

☐ No

If answer is "yes" type of consolidation

Communitation

answer is "no" list the owners and tract descriptions which have actually been consolidated. (Use reverse side of

this form if necessary.

No allowable will be assigned to the well until all interests have been consolidated (by communitization, unitization, forced-pooling, or otherwise) or until a non-standard unit, eliminating such interest, has been approved by the Division.

OPERATOR CERTIFICATION

I hereby certify that the information contained herein is true and complete to the best of my knowledge and belief.

Signature

*L. M. Sanders*

Printed Name

L. M. Sanders

Position

Supv., Regulatory Affairs

Company

Phillips Petroleum Company

Date

9/15/90

SURVEYOR CERTIFICATION

I hereby certify that the well location shown on this plat was plotted from field notes of actual surveys made by me or under my supervision, and that the same is true and correct to the best of my knowledge and belief.

Date Surveyed

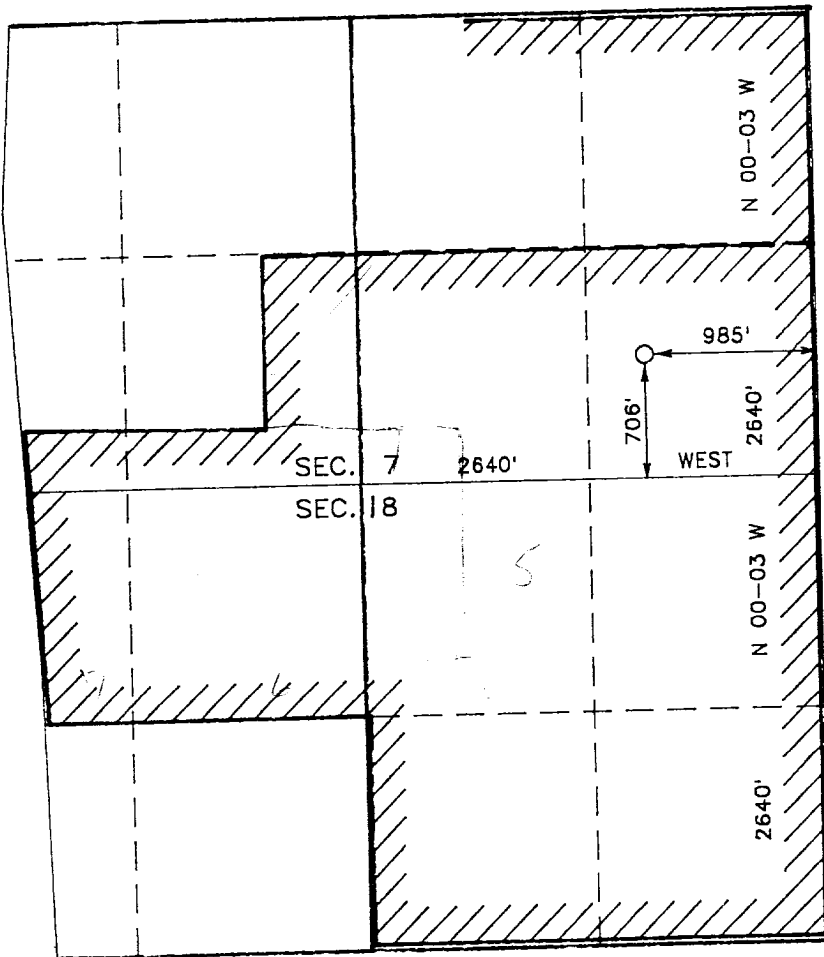
JULY

Signature & Seal of Professional Surveyor

R. HOWARD DAGGETT

Certificate No.

Registered Professional  
Land Surveyor



0 330 660 990 1320 1650 1980 2310 2640 2000 1500 1000 500 0

