

UNITED STATES  
DEPARTMENT OF THE INTERIOR  
GEOLOGICAL SURVEYRECEIVED  
BLM30-045-28509  
5. LEASE DESIGNATION AND SERIAL NO.

NM-10561

6. IF INDIAN, ALLOTTEE OR TRIBE NAME

01

7. UNIT AGREEMENT NAME

N.M.

8. FARM OR LEASE NAME

Atlantis

9. WELL NO.

2

10. FIELD AND POOL, OR WELDCAT

Basin Dakota

11. SEC., T., R., M., OR NEAR

AND SURVEY OR AREA

Sec. 3, T30N, R12W, NMPM

12. COUNTY OR PARISH OR STATE

San Juan NM

## APPLICATION FOR PERMIT TO DRILL, DEEPEN, OR PLUG BACK

## 1a. TYPE OF WORK

DRILL ☒DEEPEN ☐PLUG BACK ☐

## b. TYPE OF WELL

OIL  
WELL ☐GAS  
WELL ☒

OTHER

SINGLE  
ZONE☒ 19 FARMINGTON  
MULTIPLE  
ZONE

## 2. NAME OF OPERATOR

DUGAN PRODUCTION CORP. ✓

## 3. ADDRESS OF OPERATOR

P.O. Box 420, Farmington, NM 87499

## 4. LOCATION OF WELL (Report location clearly and in accordance with any State requirements.)\*

At surface

790' FNL &amp; 1850' FEL

At proposed prod. zone

## 14. DISTANCE IN MILES AND DIRECTION FROM NEAREST TOWN OR POST OFFICE\*

approx. 6 miles North of Kirtland, NM

## 15. DISTANCE FROM PROPOSED\*

LOCATION TO NEAREST  
PROPERTY OR LEASE LINE, FT.  
(Also to nearest drig. unit line, if any)

790'

## 16. NO. OF ACRES IN LEASE

1397.16

## 17. NO. OF ACRES ASSIGNED

TO THIS WELL

320

## 18. DISTANCE FROM PROPOSED LOCATION\*

TO NEAREST WELL, DRILLING, COMPLETED,  
OR APPLIED FOR, ON THIS LEASE, FT. DPC Atlantis #4

75' From proposed

## 19. PROPOSED DEPTH

6075'

## 20. ROTARY OR CABLE TOOLS

Rotary

## 21. ELEVATIONS (Show whether DF, RT, GR, etc.)\*

✓ 5641' GL; 5653' RKB

This action is subject to technical and  
procedural review pursuant to 43 CFR 3165.3

## 22. APPROX. DATE WORK WILL START\*

ASAP

## 23.

PROPOSED CASING AND CEMENTING PROGRAM

SIZE OF HOLE	SIZE OF CASING	WEIGHT PER FOOT	SETTING DEPTH	QUANTITY OF CEMENT
12-1/4"	8-5/8"	24#	200'	160 cu ft. circ. to surface
7-7/8"	4-1/2"	10.5#	6075'	1593 cu ft. circ. to surface

Plan to drill a 12-1/4" hole and set 200' of 8-5/8" OD, 24# J-55 surface casing; then plan to drill a 7-7/8" hole to total depth with gel-water-mud program to test Dakota formation. Plan to run IES and CDL logs. If determined productive, will run 4-1/2", 10.5#, J-55 casing, selectively perforate, frac, clean out after frac and complete well.

RECEIVED

FEB 08 1991.

OIL CON. DIV.

DIST. 3

Note: Original APD rescinded. Resubmitted for reapproval with additional COOP & cementing information attached.

IN ABOVE SPACE DESCRIBE PROPOSED PROGRAM: If proposal is to deepen or plug back, give data on present productive zone and proposed new productive zone. If proposal is to drill or deepen directionally, give pertinent data on subsurface locations and measured and true vertical depths. Give blowout preventer program, if any.

## 24.

SIGNED Shannon E. Dugan TITLE Vice-President/  
Geologist DATE 1-21-91

(This space for Federal or State office use)

## PERMIT NO.

## APPROVAL DATE

## APPROVED BY

## TITLE

CONDITIONS OF APPROVAL, IF ANY:

APPROVED  
AS AMENDED

FEB 01 1991

AREA MANAGER

\*See Instructions On Reverse Side

NMOCD

## OIL CONSERVATION DIVISION

STATE OF NEW MEXICO  
ENERGY AND MINERALS DEPARTMENT

P. O. BOX 2088

SANTA FE, NEW MEXICO 87501

Form C-102  
Revised 10-1-78

All distances must be from the outer boundaries of the Section.

Operator Dugan Production Corporation			Lease Atlantis 91 JAN 25 PM 3:01		Well No. 2
Unit Letter B	Section 3	Township 30 North	Range 14 West	County SANTA FE, N.M.	
Actual Footage Location of Well:					
790 feet from the North line and		1850 feet from the East line			
Ground Level Elev. 5641	Producing Formation Dakota	Pool Basin Dakota		Dedicated Acreage: 320 Acres	

1. Outline the acreage dedicated to the subject well by colored pencil or hachure marks on the plat below.
2. If more than one lease is dedicated to the well, outline each and identify the ownership thereof (both as to working interest and royalty).
3. If more than one lease of different ownership is dedicated to the well, have the interests of all owners been consolidated by communitization, unitization, force-pooling, etc?

☐ Yes ☐ No If answer is "yes," type of consolidation \_\_\_\_\_

If answer is "no," list the owners and tract descriptions which have actually been consolidated. (Use reverse side of this form if necessary.) \_\_\_\_\_

No allowable will be assigned to the well until all interests have been consolidated (by communitization, unitization, forced-pooling, or otherwise) or until a non-standard unit, eliminating such interests, has been approved by the Division.

	SECTION 3

## CERTIFICATION

I hereby certify that the information contained herein is true and complete to the best of my knowledge and belief.

Name Jim L. Jacobs

Position Geologist

Company Dugan Production Corp

Date 8-10-88

I hereby certify that the location shown on this plat was from field notes collected by me or under my supervision and that the same is correct to the best of my knowledge and belief.

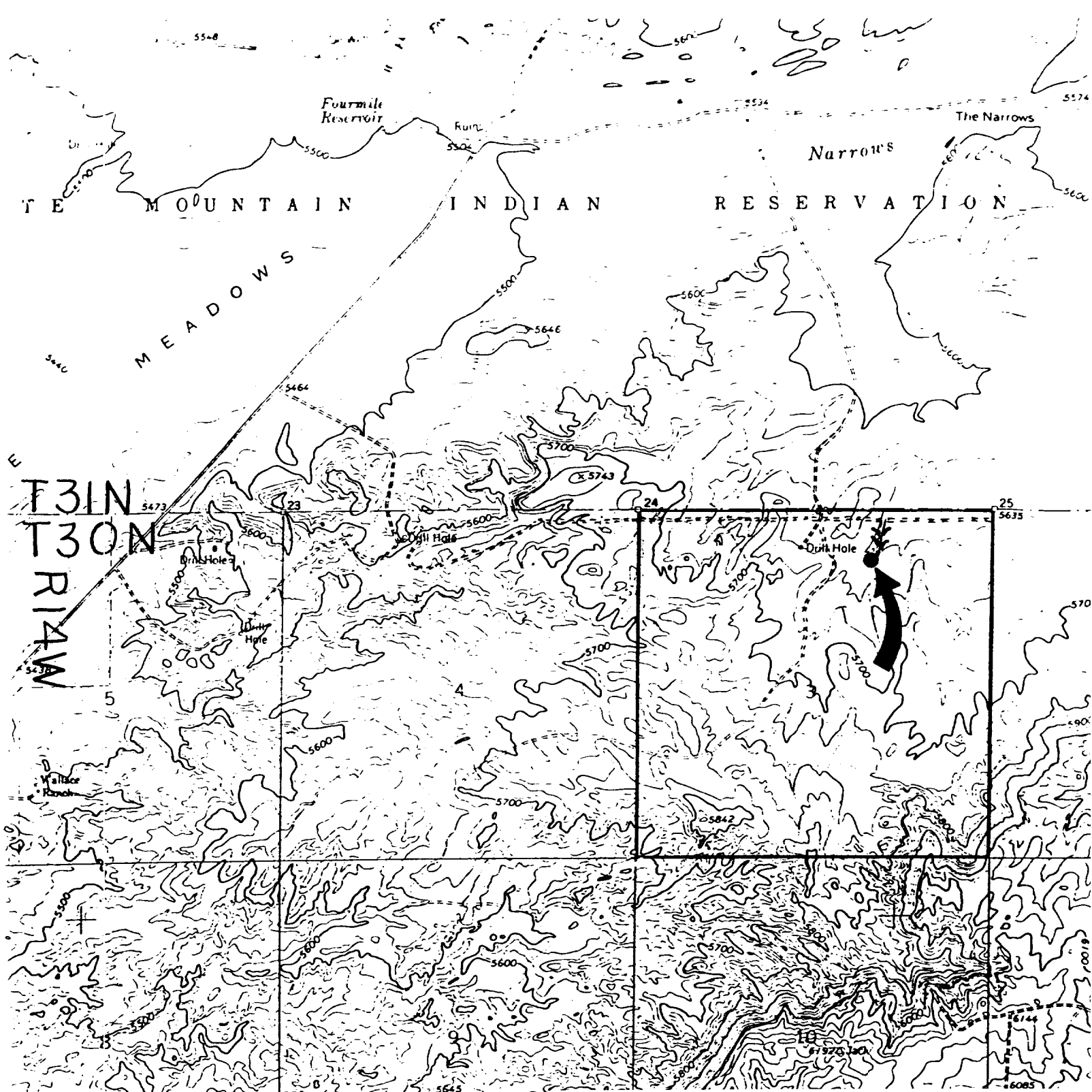
Date Surveyed

June 28, 1988

Registered Professional Engineer and/or Land Surveyor

Edgar L. Risenhoover

Professional No. 5070



DUGAN PRODUCTION CORP. - Atlantis #2

DUGAN PRODUCTION CORP. - Atlantis #2

Existing Roads

Exhibit E

Planned Access Road(s)

Exhibit E

Vicinity of nearest town or reference pt.  
approx. 6 miles North of Kirtland, NM

Width 20' Maximum grades 1%

Drainage design as required

Cuts & Fills see diagram

Surfacing material                     

↪ Turnouts

↪ Waterbars

≡ Culverts

≡ Gates

≡ Cattleguards

/// Fence cuts

Type of surface dirt

Conditions good

Other                     

Reference map: USGS map Young's Lake  
N3645-W10815/7.5, 1963, photorevised 1979

Access road(s) cross Private land.