

UNITED STATES
DEPARTMENT OF THE INTERIOR
BUREAU OF LAND MANAGEMENT

APPLICATION FOR PERMIT TO DRILL, DEEPEN, OR PLUG BACK

30-045-28947 ✓

RECEIVED

APR 2 1993

1a. Type of Work DRILL	5. Lease Number SF-078386
1b. Type of Well GAS	6. If Indian, All. or Tribe
2. Operator MERIDIAN OIL	7. Unit Agreement Name San Juan 32-9 Unit
3. Address & Phone No. of Operator PO Box 4289, Farmington, NM 87499 (505) 326-9700	8. Farm or Lease Name San Juan 32-9 Unit 9. Well Number 6R
4. Location of Well 1450' FNL, 965' FEL Latitude 36° 54' 04", Longitude 107° 45' 41"	10. Field, Pool, Wildcat Blanco Mesa Verde 11. Sec., Twn, Rge, Mer. Sec 15, T-31-N, R-9-W NMPM
14. Distance in Miles from Nearest Town 7.5 miles to Navajo City	12. County San Juan
15. Distance from Proposed Location to Nearest Property or Lease Line 965'	13. State NM
16. Acres in Lease <i>126.4</i>	17. Acres Assigned to Well 314.88
18. Distance from Proposed Location to Nearest Well, Drlg, Compl, or Applied for on this Lease 600'	20. Rotary or Cable Tools Rotary
19. Proposed Depth 6208'	
21. Elevations (DF, FT, GR, Etc.) 6545' GR	22. Approx. Date Work will Start 2nd quarter 1993
23. Proposed Casing and Cementing Program See Operations Plan attached	DEPARTMENT OPERATIONS AUTHORIZED ARE SUBJECT TO COMPLIANCE WITH ATTACHED "GENERAL REQUIREMENTS"
24. Authorized by: <u><i>Donald C. Walker</i></u> Regional Drilling Engineer	<u><i>3/17/93</i></u> Date

RECEIVED

PERMIT NO. _____ APPROVAL DATE _____

APPROVED BY _____ TITLE _____ DATE _____

Archaeological Report submitted 1-1-93
Threatened and Endangered Species Report to be submitted
NOTE: This format is issued in lieu of U.S. BLM Form 3160-3

**APPROVED
AS AMENDED**

MAR 31 1993

DISTRICT MANAGER

NMOCD

EF

State of New Mexico
 District Office
 San Juan - 4 copies
 Santa Fe - 3 copies

State of New Mexico
 Energy, Minerals and Natural Resources Department

Form C-182
 Revised 1-1-89

OIL CONSERVATION DIVISION
 P.O. Box 2088
 Santa Fe, New Mexico 87504-2088

DISTRICT I
 P.O. Box 1980, Hobbs, NM 88240

DISTRICT II
 P.O. Drawer DD, Artesa, NM 88210

DISTRICT III
 1000 Rio Brazos Rd., Aztec, NM 87410

WELL LOCATION AND ACREAGE DEDICATION PLAT

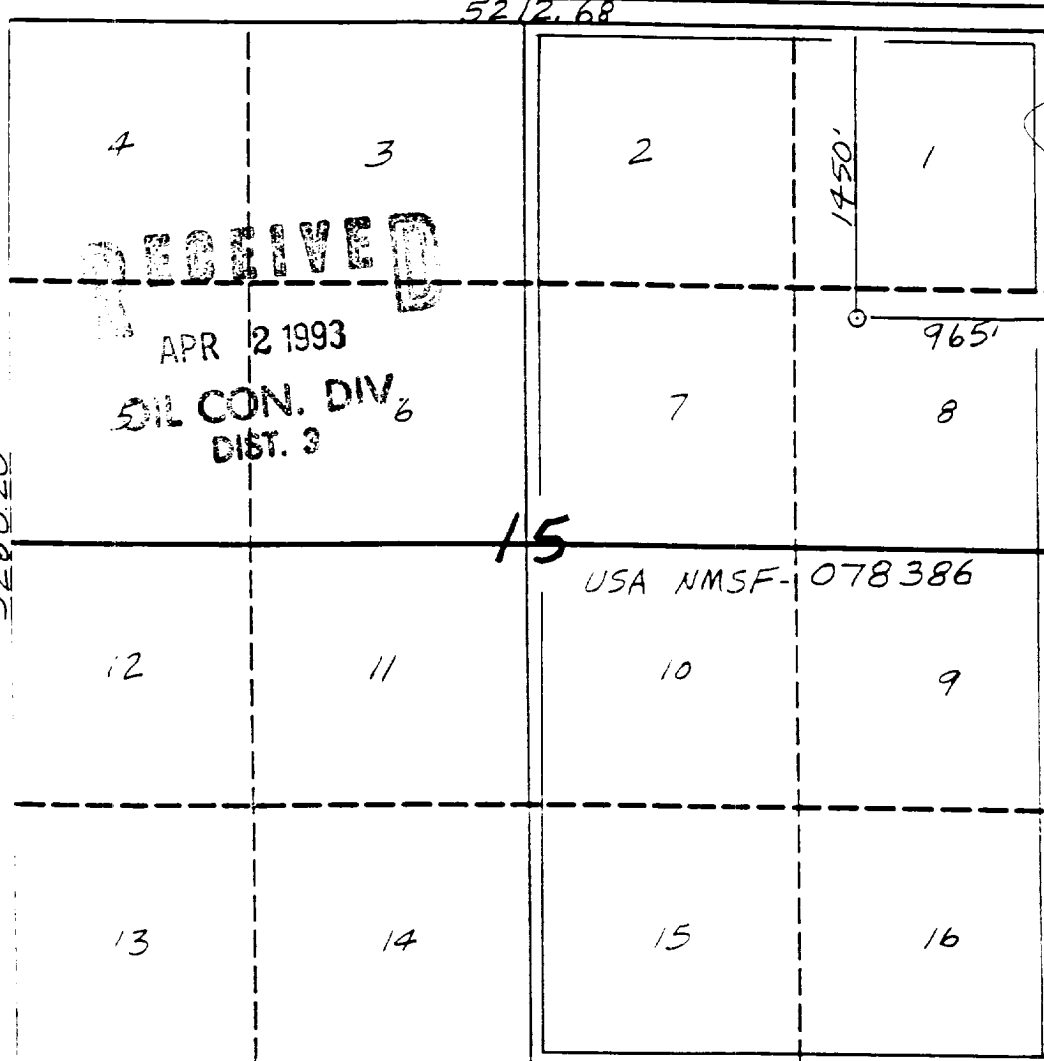
All Distances must be from the outer boundaries of the section

Operator Meridian Oil Inc.		Line San Juan 32-9 Unit		Well No.
Tract Letter H	Section 15	Township 31 North	Range 9 West	County San Juan
Actual Footage Location of Well: 1450 feet from the North line and 965 feet from the East line				
Ground level Elev. 6545'	Producing Formation Mesa Verde	Pool Blanco	Dedicated Acreage 314.88 Acres	

RECEIVED
 APR 12 1993
 DISTRICT I
 DISTRICT II
 DISTRICT III

- Outline the acreage dedicated to the subject well by colored pencil or inkline marks on the plat below.
- If more than one lease is dedicated to the well, outline each and identify the ownership thereof (both as to working interest and royalty).
- If more than one lease of different ownership is dedicated to the well, have the interests of all owners been consolidated by communitization, unitization, force-pooling, etc.?
 Yes No If answer is "yes" type of consolidation _____ unitization

If answer is "no" list the owners and tract descriptions which have actually been consolidated. (Use reverse side of this form if necessary.)
 No allowable will be assigned to the well until all interests have been consolidated (by communitization, unitization, force-pooling, or otherwise) or until a non-standard unit, eliminating such interest, has been approved by the Division.



OPERATOR CERTIFICATION

I hereby certify that the information contained herein is true and complete to the best of my knowledge and belief.

Peggy Bradford
 Signature

Peggy Bradford
 Printed Name

Regulatory Affairs
 Position

Meridian Oil Inc.
 Company

3-16-93
 Date

SURVEYOR CERTIFICATION

I hereby certify that the well location shown on this plat was plotted from field notes of actual surveys made by me or under my supervision, and that the same is true and correct to the best of my knowledge and belief.

10-23-92
 Date Surveyed

G. EDWARDS
 Name of Surveyor

9357
 Professional Surveyor

Professional Surveyor

Professional Surveyor

Professional Surveyor

OPERATIONS PLAN

Well Name: San Juan 32-9 Unit #6R
Location: 1450'FNL, 965'FEL Section 15, T-31-N, R-09-W
 San Juan County, New Mexico
 Latitude 36° 54' 04", Longitude 107° 45' 41"
Formation: Blanco Mesa Verde
Elevation: 6545'GL

<u>Formation Tops:</u>	<u>Top</u>	<u>Bottom</u>	<u>Contents</u>
Surface	San Jose	1842'	
Ojo Alamo	1842'	2104'	aquifer
Kirtland	2104'	3034'	
Fruitland	3034'	3444'	gas
Pictured Cliffs	3444'	3554'	gas
Lewis	3554'	4187'	
Intermediate TD	3754'		
Chacra	4187'	4954'	
Mesa Verde	4954'		gas & oil
Upper Cliff House	4954'	5305'	
Massive Cliff House	5305'	5350'	
Menefee	5350'	5658'	
Massive Point Lookout	5698'	5763'	
Lower Point Lookout	5763'		
Total Depth	6208'		

Logging Program:

Openhole Wireline Logging -
 Surface to Total Depth : CNL/GR
 Intermediate TD to Total Depth : DIL/LDT/Temp
 Mud Logs/Coring/DST -
 Mud logs - Intermediate TD to Total Depth
 Coring - none
 DST - none

Mud Program:

<u>Interval</u>	<u>Type</u>	<u>Weight</u>	<u>Vis.</u>	<u>Fluid Loss</u>
0- 200'	Spud	8.4-8.9	40-50	no control
200-3754'	Weighted	8.4-9.1	30-60	no control
3754-6208'	Gas/Mist	n/a	n/a	n/a

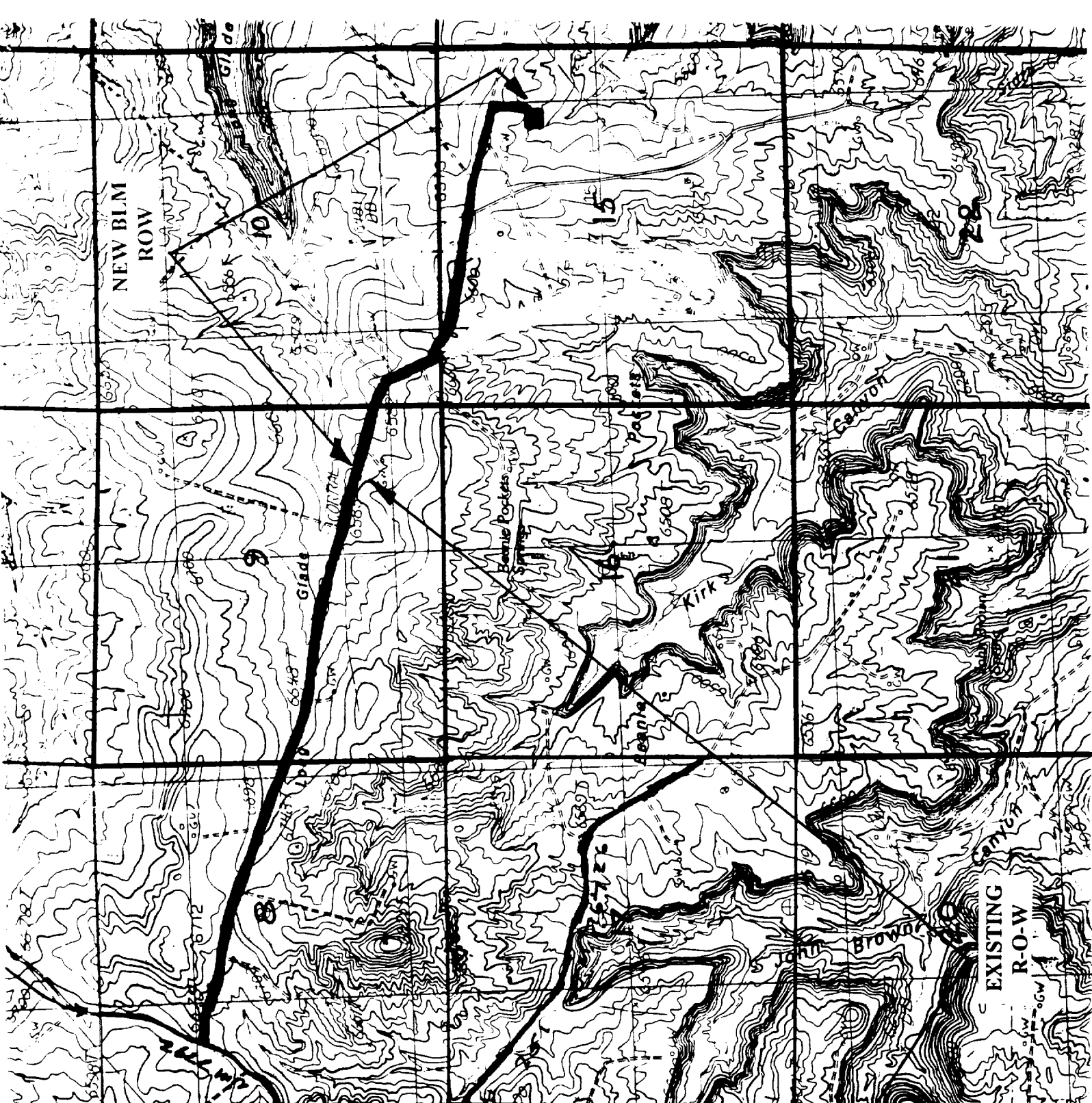
Pit levels will be visually monitored to detect gain or loss of fluid control.

Casing Program:

<u>Hole Size</u>	<u>Depth Interval</u>	<u>Csg. Size</u>	<u>Wt.</u>	<u>Grade</u>
12 1/4"	0' - 200'	9 5/8"	32.3#	H-40
8 3/4"	0' - 3754'	7"	20.0#	K-55
6 1/4"	3604' - 6208'	4 1/2"	10.5#	K-55

Tubing Program:

0' - 6208' 2 3/8" 4.7# J-55



MERIDIAN OIL INC
SAN JUAN 32-9 UNIT #6R
 T 31 N, R 09 W
 800' New Construction

Section 15:	SENE	100'
	N2N2	4000'
	10: SWSW	1500'
	09: SESE	1100'

Remaining BLM Roads are covered by
 ROW's NM 85645, NM 77292 & NM 76726.