

UNITED STATES  
DEPARTMENT OF THE INTERIOR  
BUREAU OF LAND MANAGEMENT

RECEIVED  
SLM

COATED 29 JUN 3:37

APPLICATION FOR PERMIT TO DRILL, DEEPEN, OR PLUG BACK *30-045-28962*

1a. Type of Work DRILL	<b>RECEIVED</b> JUN 10 1993	5. Lease Number SF-078439
1b. Type of Well GAS		6. If Indian, All. or Tribe
2. Operator <b>MERIDIAN OIL OIL CON. DIV</b> <i>1453P</i>		7. Unit Agreement Name
3. Address & Phone No. of Operator PO Box 4289, Farmington, NM 87499  (505) 326-9700	<b>DIST 2</b>	8. Farm or Lease Name <i>7208</i> Johnston Federal 9. Well Number 7B
4. Location of Well 1275' FNL, 810' FWL  Latitude 36° 54' 59", Longitude 107° 49' 16"		10. Field, Pool, Wildcat <i>72319</i> Blanco Mesa Verde 11. Sec., Twn, Rge, Mer. <i>C</i> Sec 7, T-31-N, R-9-W NMPM
14. Distance in Miles from Nearest Town 4 miles to Cedar Hill	12. County San Juan	13. State NM
15. Distance from Proposed Location to Nearest Property or Lease Line 810'		
16. Acres in Lease <i>2434.23</i>	17. Acres Assigned to Well 266.77 N/2	
18. Distance from Proposed Location to Nearest Well, Drlg, Compl, or Applied for on this Lease 65'		
19. Proposed Depth 6177'	20. Rotary or Cable Tools Rotary	
21. Elevations (DF, FT, GR, Etc.) 6556' GR	22. Approx. Date Work will Start 2nd quarter 1993	
23. Proposed Casing and Cementing Program See Operations Plan attached		
24. Authorized by: <i>[Signature]</i> Regional Drilling Engineer	Date <i>4/21/93</i>	

PERMIT NO. \_\_\_\_\_ APPROVAL DATE \_\_\_\_\_  
APPROVED BY \_\_\_\_\_ TITLE \_\_\_\_\_ DATE \_\_\_\_\_

Archaeological Report will be submitted  
Threatened and Endangered Species Report will be submitted

NOTE: This format is issued in lieu of U.S. BLM Form 3160-3

*056-3250* *[Signature]* NMOC

**APPROVED  
AS AMENDED**

JUN 04 1993  
*[Signature]*  
DISTRICT MANAGER

Submit to Appropriate  
District Office  
State Lease - 4 copies  
Fee Lease - 3 copies

State of New Mexico  
Energy, Minerals and Natural Resources Department

Form C-102  
Revised 1-1-89

OIL CONSERVATION DIVISION

P.O. Box 2088  
Santa Fe, New Mexico 87504-2088

RECEIVED  
SLM

60 JUN 22 PM 3:07

070 REGISTRATION, NM

DISTRICT I  
P.O. Box 1980, Hobbs, NM 88240

DISTRICT II  
P.O. Drawer DD, Artesia, NM 88210

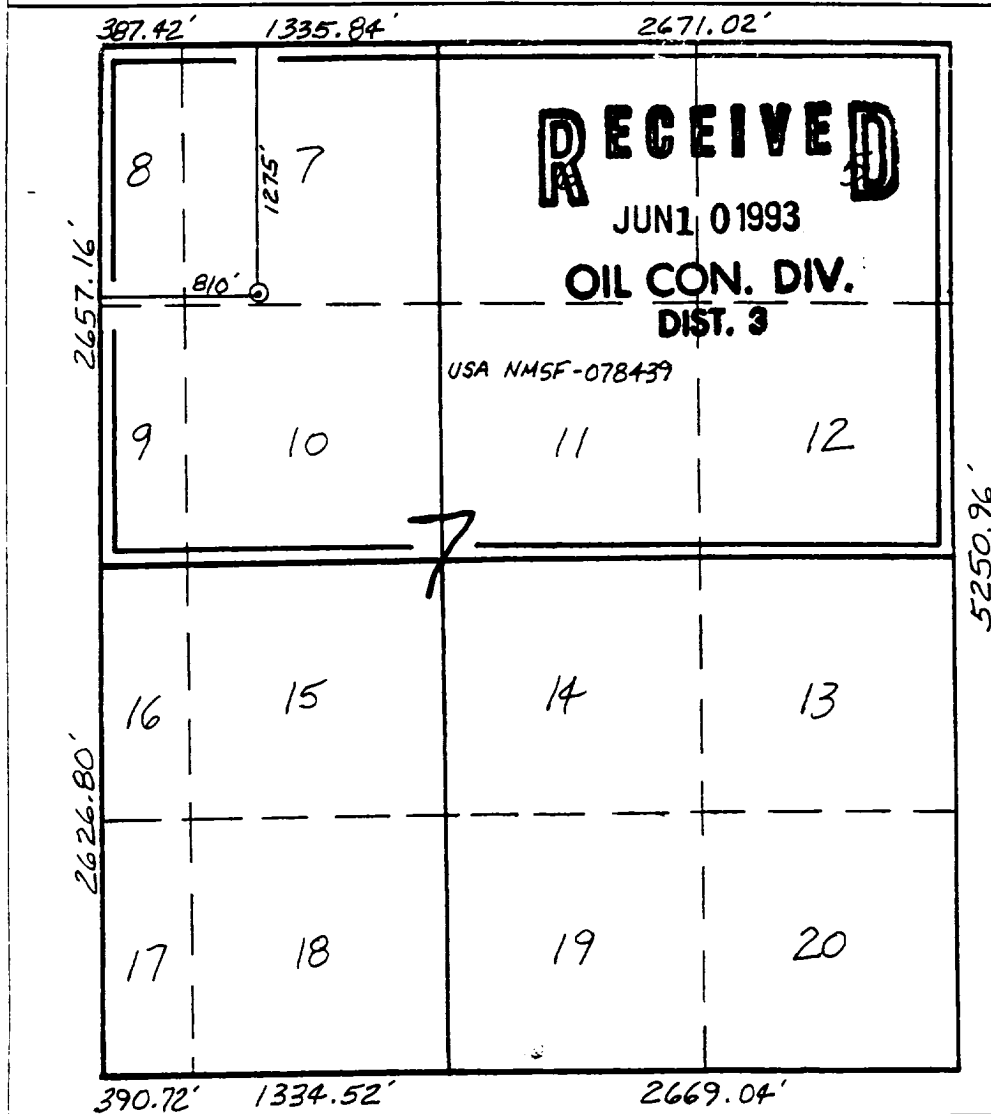
DISTRICT III  
1000 Rio Brazos Rd., Aztec, NM 87410

WELL LOCATION AND ACREAGE DEDICATION PLAT

All Distances must be from the outer boundaries of the section

Operator Meridian Oil Inc.		Lease Johnston Federal		Well No. 7B
Unit Letter C	Section 7	Township 31 North	Range 9 West	County San Juan
Actual Footage Location of Well: 1275 feet from the North line and 810 feet from the West line				
Ground level Elev. 6556'	Producing Formation Mesa Verde	Pool Blanco	Dedicated Acreage: 266.77 Acres	

- Outline the acreage dedicated to the subject well by colored pencil or highlighter marks on the plat below.
- If more than one lease is dedicated to the well, outline each and identify the ownership thereof (both as to working interest and royalty).
- If more than one lease of different ownership is dedicated to the well, have the interest of all owners been consolidated by communitization, unitization, force-pooling, etc?  
☐ Yes ☐ No If answer is "yes" type of consolidation \_\_\_\_\_  
If answer is "no" list the owners and tract descriptions which have actually been consolidated. (Use reverse side of this form if necessary.)  
No allowable will be assigned to the well until all interests have been consolidated (by communitization, unitization, forced-pooling, or otherwise) or until a non-standard unit, eliminating such interest, has been approved by the Division.



OPERATOR CERTIFICATION

I hereby certify that the information contained herein is true and complete to the best of my knowledge and belief.

*Peggy Bradfield*  
Signature

Peggy Bradfield

Printed Name

Regulatory Affairs

Position

Meridian Oil Inc.

Company

4-14-93

Date

SURVEYOR CERTIFICATION

I hereby certify that the well location shown on this plat was plotted from field notes of actual surveys made by me or under my supervision, and that the same is true and correct to the best of my knowledge and belief.

1-26-93

Date Surveyed

*Neale C. Edwards*  
Signature

Professional Surveyor

NEW MEXICO  
6857

6857

Certificate NUMBERED LAND SUB

Neale C. Edwards

OPERATIONS PLAN

**Well Name:** Johnston Federal #7B  
**Location:** 1275'FNL, 810'FWL Section 7, T-31-N, R-9-W  
 San Juan County, New Mexico  
 Latitude 36° 54' 59", Longitude 107° 49' 16"  
**Formation:** Blanco Mesa Verde  
**Elevation:** 6556'GL

<u>Formation Tops:</u>	<u>Top</u>	<u>Bottom</u>	<u>Contents</u>
Surface	San Jose	1872'	
Ojo Alamo	1872'	1904'	aquifer
Kirtland	1904'	3003'	gas
Fruitland	3003'	3383'	gas
Pictured Cliffs	3383'	3625'	gas
Lewis	3625'	4156'	gas
<b>Intermediate TD</b>	<b>3825'</b>		
Chacra	4156'	4133'	gas
Mesa Verde	4930'		gas
Upper Cliff House	4930'	5224'	gas
Massive Cliff House	5224'	5285'	gas
Menefee	5285'	5627'	gas
Massive Point Lookout	5627'	5737'	gas
Lower Point Lookout	5737'		gas & oil
<b>Total Depth</b>	<b>6177'</b>		

Logging Program:

Openhole Wireline Logging -  
 Surface to Total Depth : GR/DIL  
 Intermediate TD to Total Depth : GR/LDT/CNL/DIL  
 Mud Logs/Coring/DST -  
 Mud logs - none  
 Coring - none  
 DST - none

Mud Program:

<u>Interval</u>	<u>Type</u>	<u>Weight</u>	<u>Vis.</u>	<u>Fluid Loss</u>
0- 200'	Spud	8.4-8.9	40-50	no control
200-3825'	Weighted	8.4-9.1	30-60	no control
3825-6177'	Gas/Mist	n/a	n/a	n/a

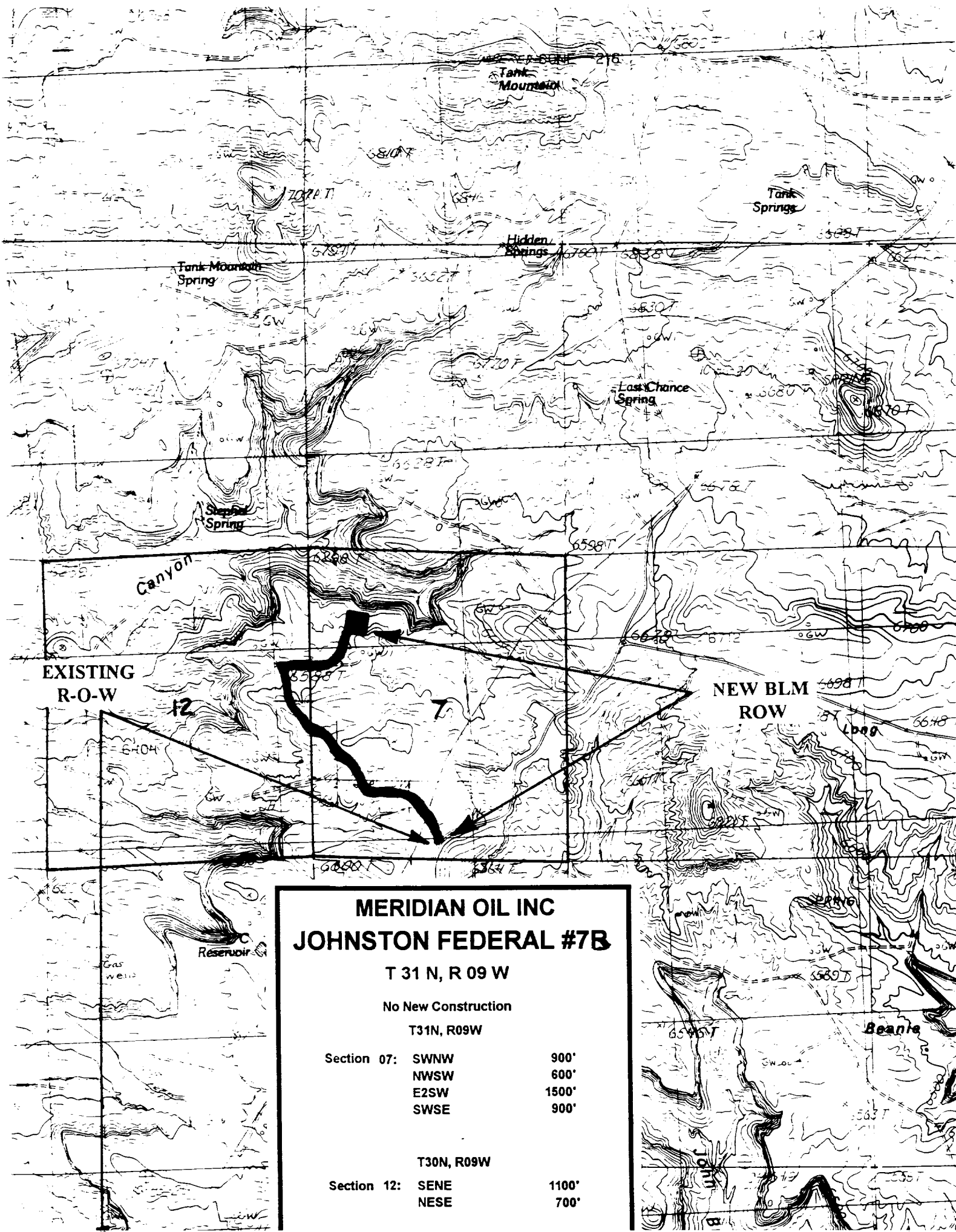
Pit levels will be visually monitored to detect gain or loss of fluid control.

Casing Program:

<u>Hole Size</u>	<u>Depth Interval</u>	<u>Csg.Size</u>	<u>Wt.</u>	<u>Grade</u>
12 1/4"	0' - 200'	9 5/8"	32.3#	H-40
8 3/4"	0' - 3825'	7"	20.0#	K-55
6 1/4"	3675' - 6177'	4 1/2"	10.5#	K-55

Tubing Program:

0' - 6177'      2 3/8"      4.7#      J-55



**MERIDIAN OIL INC**  
**JOHNSTON FEDERAL #7B**

T 31 N, R 09 W

No New Construction

T31N, R09W

Section 07:	SWNW	900'
	NWSW	600'
	E2SW	1500'
	SWSE	900'

T30N, R09W

Section 12:	SENE	1100'
	NESE	700'