

UNITED STATES
DEPARTMENT OF THE INTERIORBUREAU OF LAND MANAGEMENT *90-045-28974*

APPLICATION FOR PERMIT TO DRILL, DEEPEN, OR PLUG BACK

1a. TYPE OF WORK

DRILL ☒DEEPEN ☐PLUG BACK ☐

b. TYPE OF WELL

OIL
WELL ☐GAS
WELL ☐

OTHER Coalbed Methane

SINGLE
ZONE ☒MULTIPLE
ZONE ☐2. NAME OF OPERATOR *2521* 214/701-9106 5400 LBJ Freeway, Suite 500
Texakoma Oil & Gas Corporation Dallas, TX 752403. ADDRESS OF OPERATOR 303/452-8888 13585 Jackson Drive
Permitco Inc. - Agent Denver, CO 80241

4. LOCATION OF WELL (Report location clearly and in accordance with any State requirements.)

At surface 890' FNL and 1375' FEL
At proposed prod. zone NW NE Sec. 19

14. DISTANCE IN MILES AND DIRECTION FROM NEAREST TOWN OR POST OFFICE*

1 mile North of Farmington, NM

15. DISTANCE FROM PROPOSED*

LOCATION TO NEAREST
PROPERTY OR LEASE LINE, FT.
(Also to nearest drlg. unit line, if any) 890'

16. NO. OF ACRES IN LEASE

477.17 637.91

18. DISTANCE FROM PROPOSED LOCATION*

TO NEAREST WELL, DRILLING, COMPLETED,
OR APPLIED FOR, ON THIS LEASE, FT. approx. 205'

19. PROPOSED DEPTH

2050'

20. ROTARY OR CABLE TOOLS

Rotary

21. ELEVATIONS (Show whether DF, RT, GR, etc.)

5844' GR

*This action is subject to technical and
procedural review pursuant to 43 CFR 3165.3
and appeal pursuant to 43 CFR 3165.4.*

22. APPROX. DATE WORK WILL START*

Upon approval of this

23. PROPOSED CASING AND CEMENTING PROGRAM

SIZE OF HOLE	SIZE OF CASING	WEIGHT PER FOOT	SETTING DEPTH	QUANTITY OF CEMENT
12-1/4"	8-5/8"	24#	300'	225 sx - or suffic to circ to sur
7-7/8"	5-1/2"	14#	2050'	400 sx - or suffic to circ to sur

Texakoma Oil & Gas Corporation proposes to drill a well to 2050' to test the Fruitland Coal formation for Coalbed Methane. If productive, casing will be run and the well completed. If dry, the well will be plugged and abandoned as per BLM and State of New Mexico requirements.

See Onshore Order No. 1 attached.

Texakoma Oil & Gas Corporation has been designated by proper lease interest owners to conduct operations on the above mentioned lease. Bonding will be provided by Texakoma Oil & Gas Corporation.

IN ABOVE SPACE DESCRIBE PROPOSED PROGRAM: If proposal is to deepen or plug back, give data on present productive zone and proposed new productive zone. If proposal is to drill or deepen directionally, give pertinent data on subsurface locations and measured and true vertical depths. Give blowout preventer program, if any.

24. SIGNED *[Signature]* CONSULTANT FOR: DATE 3/16/93
TITLE Texakoma Oil & Gas Corp.

(This space for Federal or State office use)

PERMIT NO.

APPROVAL DATE

APPROVED BY

TITLE

CONDITIONS OF APPROVAL, IF ANY
JUL 8 1993APPROVED
AS AMENDEDDATE
MAR 10 1993

OIL CON. DIST. 3

NMOCD

*See Instructions On Reverse Side

DISTRICT MANAGER

CONFIDENTIAL - TIGHT HOLE

State of New Mexico
Energy, Minerals and Natural Resources Department

Form C-102
Revised 1-1-89

Submit to Appropriate
District Office
State Lease - 4 copies
Fee Lease - 3 copies

OIL CONSERVATION DIVISION

P.O. Box 2088
Santa Fe, New Mexico 87504-2088

DISTRICT I
P.O. Box 1980, Hobbs, NM 88240

DISTRICT II
P.O. Drawer DD, Artesia, NM 88210

DISTRICT III
1000 Rio Brazos Rd., Aztec, NM 87410

WELL LOCATION AND ACREAGE DEDICATION PLAT

All Distances must be from the outer boundaries of the section

RECEIVED
BLM
93 MAR 17 PM 2:38

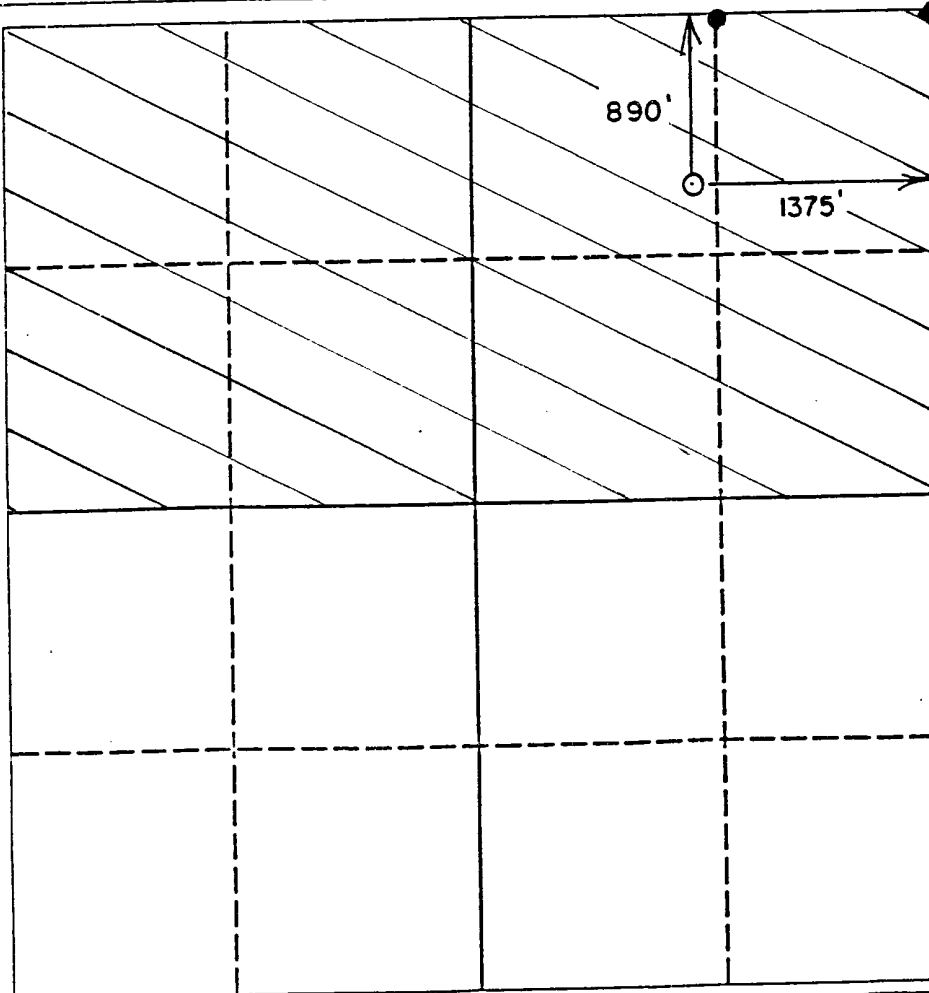
Operator TEXAKOMA O & G CO.		Lease Foothills "C"		Well No. #1
Unit Letter B	Section 19	Township 30 N.	Range 12 W.	County San Juan
Actual Footage Location of Well: 890 feet from the North line and 1375 feet from the East line				
Ground level Elev. 5844'	Producing Formation Fruitland Coal	Pool Basin Fract Coal	Dedicated Acreage: 320 38.64 Acres	

- Outline the acreage dedicated to the subject well by colored pencil or hatchure marks on the plat below.
- If more than one lease is dedicated to the well, outline each and identify the ownership thereof (both as to working interest and royalty). BLM - 100%
- If more than one lease of different ownership is dedicated to the well, have the interest of all owners been consolidated by communitization, unitization, force-pooling, etc.?

☐ Yes ☐ No If answer is "yes" type of consolidation _____

If answer is "no" list the owners and tract descriptions which have actually been consolidated. (Use reverse side of this form if necessary.) _____

No allowable will be assigned to the well until all interests have been consolidated (by communitization, unitization, forced-pooling, or otherwise) or until a non-standard unit, eliminating such interest, has been approved by the Division.



OPERATOR CERTIFICATION

I hereby certify that the information contained herein is true and complete to the best of my knowledge and belief.

Signature
Lisa L. Smith
Printed Name
Lisa L. Smith
Position
Consultant for
Company
Texakoma Oil & Gas Corp.
Date
3/16/93

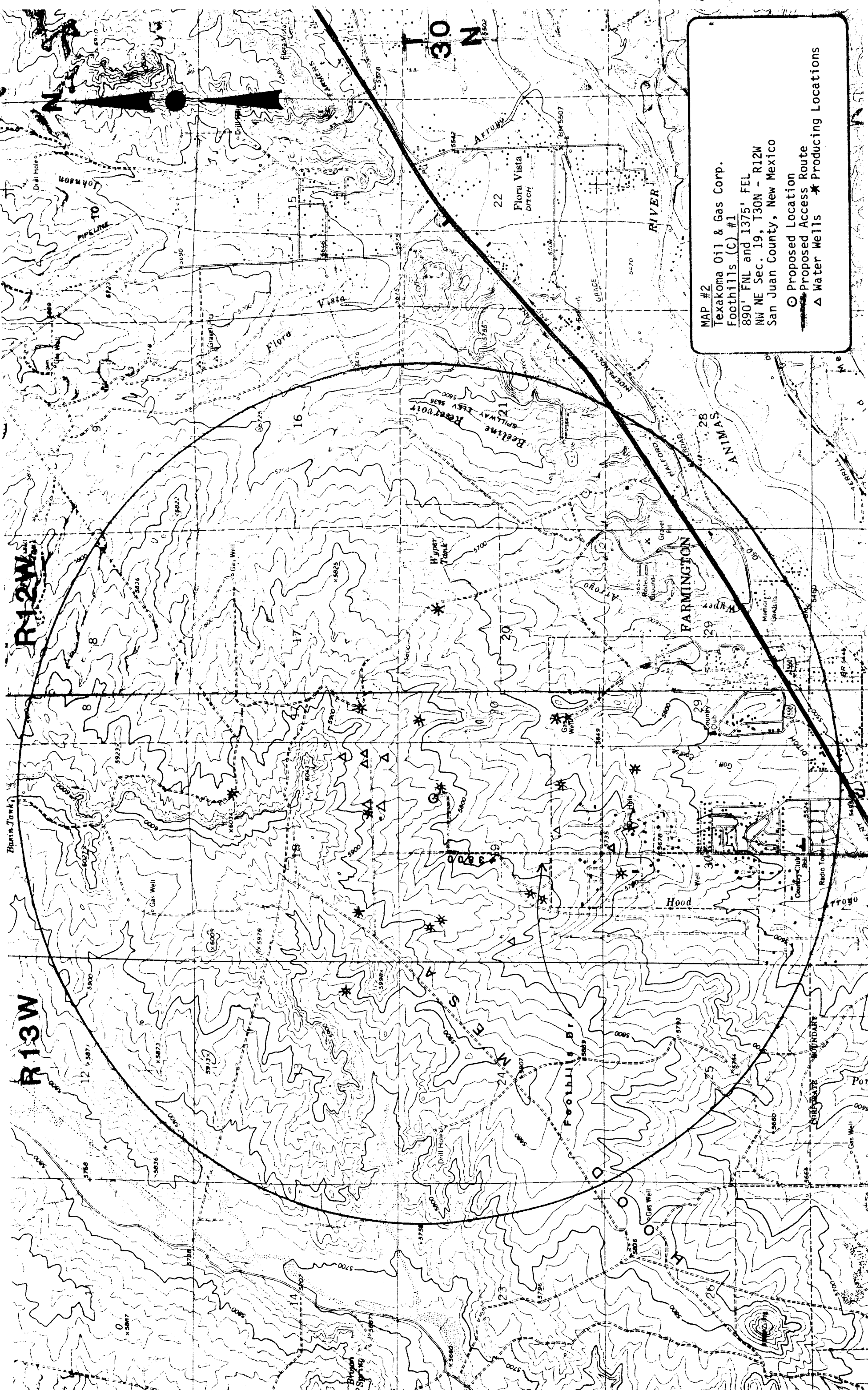
SURVEYOR CERTIFICATION

I hereby certify that the well location shown on this plat was plotted from field notes of actual surveys made by me or under my supervision, and that the same is true and correct to the best of my knowledge and belief.

Date Surveyed
3-16-93
Signature of Surveyor
James H. Hild
Professional Surveyor
6844
Certificate No.
6844

0 330 660 990 1320 1650 1980 2310 2640 2000 1500 1000 500 0





R12W

R13W

30

N

MAP #2
Texakoma Oil & Gas Corp.
Foothills (C) #1
890' FNL and 1375' FEL
NW NE Sec. 19, T30N - R12W
San Juan County, New Mexico

○ Proposed Location
— Proposed Access Route
△ Water Wells ★ Producing Locations

