

Submit to Appropriate
District Office
State Lease - 6 copies
Fee Lease - 5 copies

State of New Mexico
Energy, Minerals and Natural Resources Department

CONFIDENTIAL

Form C-101
Revised 1-1-89

OIL CONSERVATION DIVISION
P.O. Box 2088
Santa Fe, New Mexico 87504-2088

DISTRICT I
P.O. Box 1980, Hobbs, NM 88240

DISTRICT II
P.O. Drawer DD, Artesia, NM 88210

DISTRICT III
1000 Rio Brazos Rd., Aztec, NM 87410

API NO. (assigned by OCD on New Wells)

90-045-29075 ✓
5. Indicate Type of Lease
STATE ☐ FEE ☒

6. State Oil & Gas Lease No.

APPLICATION FOR PERMIT TO DRILL, DEEPEN, OR PLUG BACK

1a. Type of Work:

DRILL ☒ RE-ENTER ☐ DEEPEN ☐ PLUG BACK ☐

b. Type of Well:

OIL WELL ☐ GAS WELL ☒ OTHER ☐ SINGLE ZONE ☐ MULTIPLE ZONE ☐

7. Lease Name or Unit Agreement Name

Juhan

13454

2. Name of Operator

Robert L. Bayless

8. Well No.

3. Address of Operator

P.O. Box 168 Farmington, NM 87499

9. Pool name or Wildcat

Fulcher Kutz PC

4. Well Location

Unit Letter G : 1650 Feet From The North Line and 1800 Feet From The East Line

Section 29 Township 30N Range 12W NMPM San Juan County

10. Proposed Depth

1900'

11. Formation

Pictured Cliffs

12. Rotary or C.T.

Rotary

13. Elevations (Show whether DF, FT, GR, etc.)

5543' GL

14. Kind & Status Plug. Bood

15. Drilling Contractor

16. Approx. Date Work will start

Feb. 15, 1994

17. PROPOSED CASING AND CEMENT PROGRAM

SIZE OF HOLE	SIZE OF CASING	WEIGHT PER FOOT	SETTING DEPTH	SACKS OF CEMENT	EST. TOP
12 1/4"	8 5/8"	24.0#	120'	42 (49 ³)	surface
6 3/4"	5 1/2"	14.0#	1900'	134 (159 ³)	surface

Will drill 12 1/4" hole to 120 ft. and set 8 5/8" 24.0# J55 ST&C used casing with 42 sx Class B cement, circulated to surface. Will drill 6 3/4" hole to 1900 ft. and set 5 1/2" 14.0# M50 ST&C new casing with 134 sx cement circulated to surface. Circulating medium will be clear water, natural mud, and water loss additives. No abnormal pressures or temperatures are anticipated. Induction and density logs will be run. A blowout preventer schematic is attached. The gas from this well is not dedicated.

Estimated Formation Tops

Ojo Alamo Surface
Fruitland 1300
Pictured Cliffs 1643

RECEIVED

FEB - 1 1994

OIL CON. DIV
DIST. 3

CONFIDENTIAL

IN ABOVE SPACE DESCRIBE PROPOSED PROGRAM: IF PROPOSAL IS TO DEEPEN OR PLUG BACK, GIVE DATA ON PRESENT PRODUCTIVE ZONE AND PROPOSED NEW PRODUCTIVE ZONE. GIVE BLOWOUT PREVENTER PROGRAM, IF ANY.

I hereby certify that the information above is true and complete to the best of my knowledge and belief.

SIGNATURE Price M. Bayless TITLE Engineer DATE 1/27/94

TYPE OR PRINT NAME Price M. Bayless TELEPHONE NO. 505-326-2659

(This space for State Use)

APPROVED BY Frank Barch DEPUTY OIL & GAS INSPECTOR, DIST. #3 DATE FEB - 3 1994

CONDITIONS OF APPROVAL, IF ANY:

This Approval
Expires 2-3-95
And Will Not Be
Extended

Submit to Appropriate
District Office
State Lease - 4 copies
Fee Lease - 3 copies

State of New Mexico
Energy, Minerals and Natural Resources Department

Form C-102
Revised 1-1-89

OIL CONSERVATION DIVISION

P.O. Box 2088

Santa Fe, New Mexico 87504-2088

DISTRICT I

P.O. Box 1980, Hobbs, NM 88240

DISTRICT II

P.O. Drawer DD, Artesia, NM 88210

DISTRICT III

1000 Rio Brazos Rd., Aztec, NM 87410

WELL LOCATION AND ACREAGE DEDICATION PLAT

All Distances must be from the outer boundaries of the section

Operator ROBERT L. BAYLESS			Lease JUHAN		Well No. 1
Unit Letter G	Section 29	Township 30 N	Range 12 W	County San Juan	
Actual Footage Location of Well: 1650 feet from the North line and 1800 feet from the East line					
Ground level Elev. 5543	Producing Formation PC	Pool FULCHER KUTZ		Dedicated Acreage: 160 Acres	

1. Outline the acreage dedicated to the subject well by colored pencil or hatchure marks on the plat below.

2. If more than one lease is dedicated to the well, outline each and identify the ownership thereof (both as to working interest and royalty).

3. If more than one lease of different ownership is dedicated to the well, have the interest of all owners been consolidated by communization, unitization, force pooling, etc.?

☐ Yes

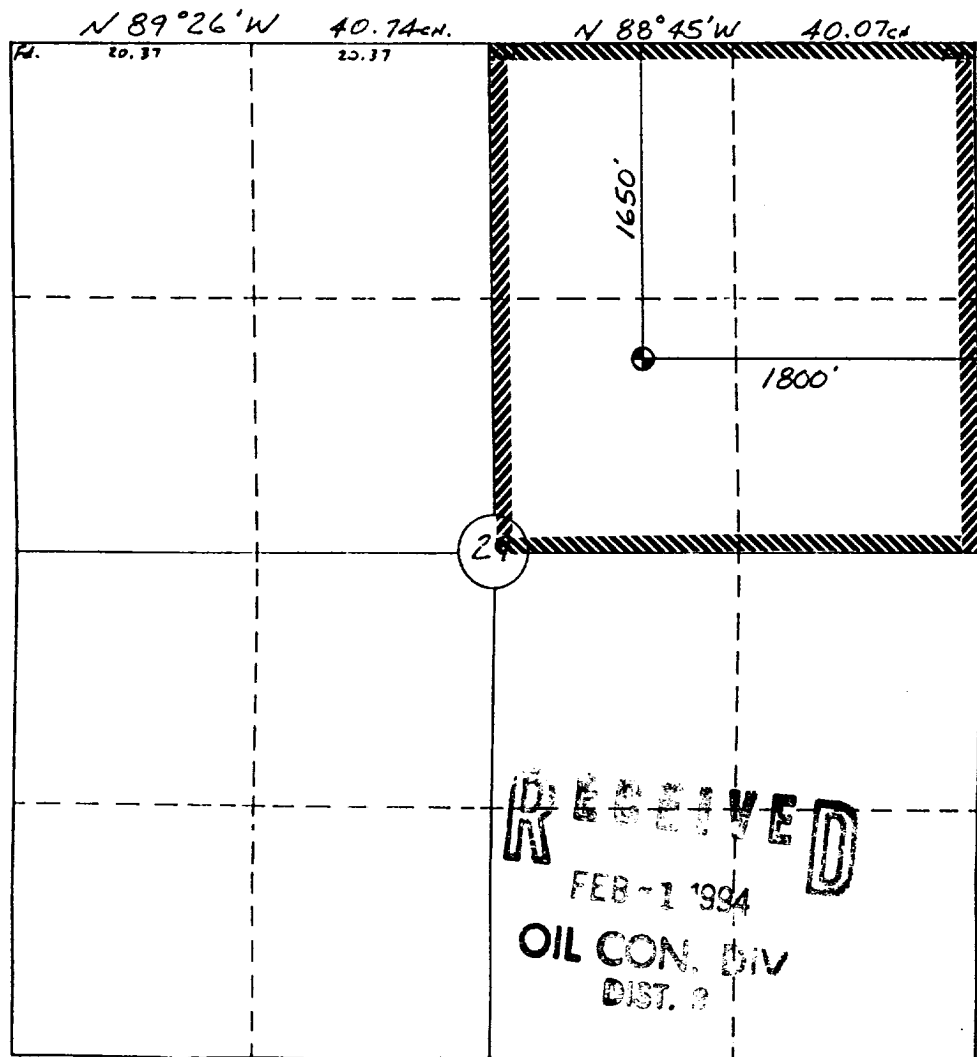
☐ No

If answer is "yes" type of consolidation

If answer is "no" list the owners and tract descriptions which have actually been consolidated. (Use reverse side of this form if necessary.)

No allowable will be assigned to the well until all interests have been consolidated (by communization, unitization, forced-pooling, or otherwise) or until a non-standard unit, eliminating such interest, has been approved by the Division.

0 330 660 990 1320 1650 1980 2310 2640 2000 1500 1000 500 0



OPERATOR CERTIFICATION

I hereby certify that the information contained herein is true and complete to the best of my knowledge and belief.

Signature

Printed Name

Price M. Bayless

Position

Engineer

Company

Robert L. Bayless

Date

1/27/94

SURVEYOR CERTIFICATION

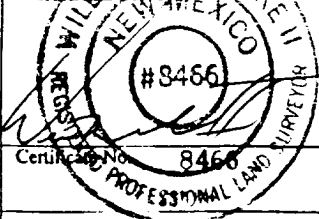
I hereby certify that the well location shown on this plat was plotted from field notes of actual surveys made by me or under my supervision, and that the same is true and correct to the best of my knowledge and belief.

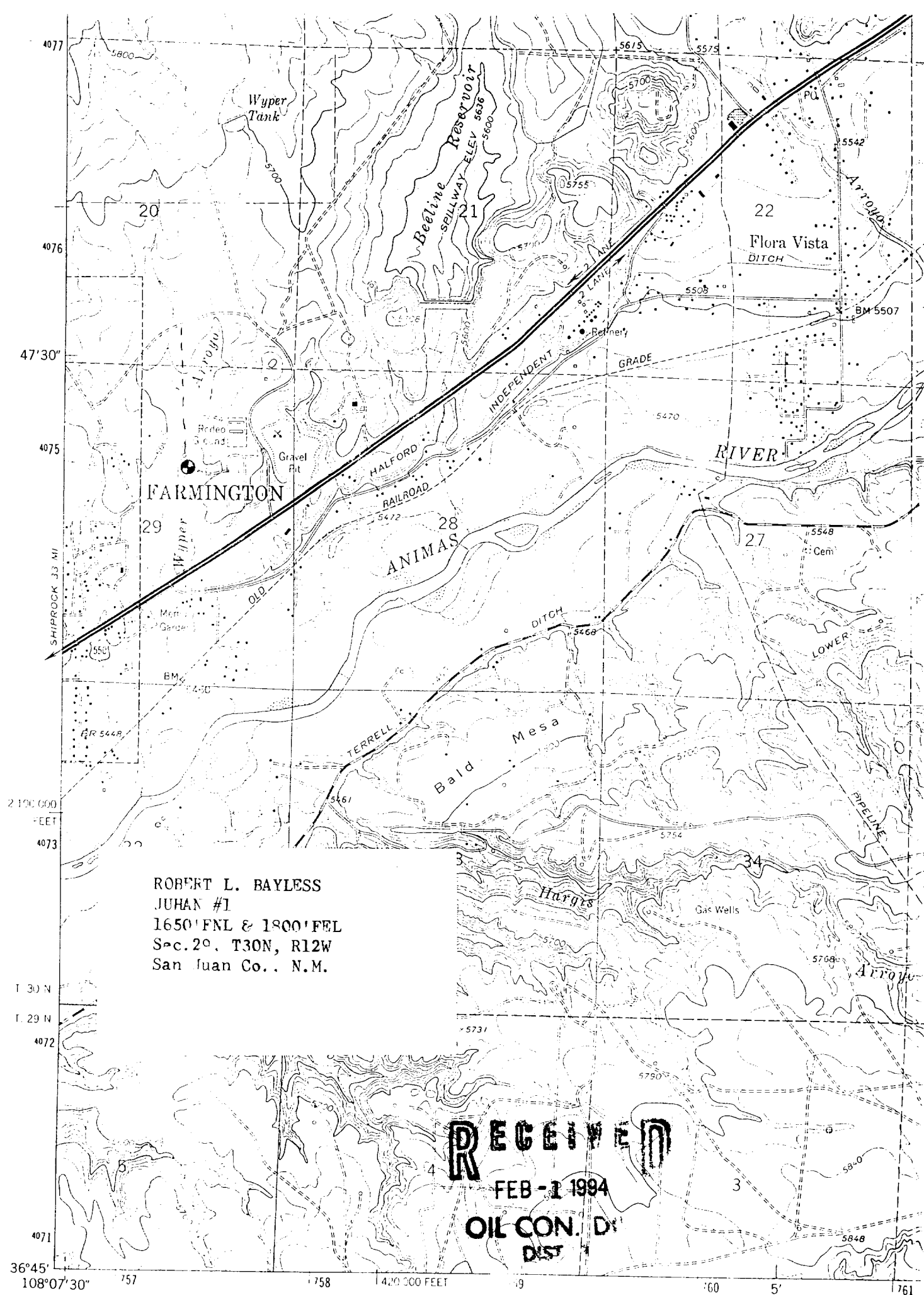
12 Jan., 1994

Date Surveyed

William B. Mahnke II

Signature & Seal of Professional Surveyor





ROBERT L. BAYLESS
JUAN #1
1650' FNL & 1800' FEL
S-c. 20. T30N, R12W
San Juan Co., N.M.

RECEIVED

FEB - 1 1994

OIL CON. DIST.