

UNITED STATES  
DEPARTMENT OF THE INTERIOR  
BUREAU OF LAND MANAGEMENT

30-045-29077

APPLICATION FOR PERMIT TO DRILL, DEEPEN, OR PLUG BACK

1a. TYPE OF WORK

DRILL ☒

DEEPEN ☐

PLUG BACK ☐

b. TYPE OF WELL

OIL  
WELL ☐

CAS  
WELL ☒

OTHER

SINGLE  
ZONE ☒

MULTIPLE  
ZONE ☐

2. NAME OF OPERATOR

SG Interests 20572

INC. (303) 563-4000

3. ADDRESS OF OPERATOR

P.O. Box 338, Ignacio, Colorado 81137

4. LOCATION OF WELL (Report location clearly and in accordance with any State requirements.)\*  
At surface

830' FNL, 1380' FEL Sec. 4-T30N-R10W

At proposed prod. zone  
Same

14. DISTANCE IN MILES AND DIRECTION FROM NEAREST TOWN OR POST OFFICE\*

9 miles

15. DISTANCE FROM PROPOSED\*

LOCATION TO NEAREST  
PROPERTY OR LEASE LINE, FT.  
(Also to nearest drlg. unit line, if any)

830'

16. NO. OF ACRES IN LEASE

2538.18

17. NO. OF ACRES ASSIGNED  
TO THIS WELL

320

18. DISTANCE FROM PROPOSED LOCATION\*  
TO NEAREST WELL, DRILLING, COMPLETED,  
OR APPLIED FOR, ON THIS LEASE, FT.

500'

19. PROPOSED DEPTH

3134'

20. ROTARY OR CABLE TOOLS

Rotary

21. ELEVATIONS (Show whether DF, RT, or Both)

6295'

This action is subject to technical and  
procedural review pursuant to 43 CFR 3153.3  
and appeal provisions of 43 CFR 3153.4

22. APPROX. DATE WORK WILL START\*

Upon BLM Approval

23.

PROPOSED CASING AND CEMENTING PROGRAM

DRILLING AND CEMENTING ARE  
SUBJECT TO COMPLIANCE WITH ATTACHED

SIZE OF HOLE	SIZE OF CASING	WEIGHT PER FOOT	SETTING DEPTH	GENERAL QUANTITIES OF CEMENT
12-1/4"	8-5/8"	24	300	200 5x Class B plus 2% CaCl2
7-7/8"	5-1/2"	15.5	TD	480 5x Class B

Maralex Resources, Inc. proposes to drill a vertical well to develop the Fruitland Coal Formation at the above described site in accordance with the attached drilling and surface use programs.

An archaeological survey will be conducted to determine any potential sites.

All of the access road for this well is located on this lease, so no right-of-way application is required.

RECEIVED  
MAR 11 1994  
OIL CON. DIV.  
DIST. 3

IN ABOVE SPACE DESCRIBE PROPOSED PROGRAM: If proposal is to deepen or plug back, give data on present productive zone and proposed new productive zone. If proposal is to drill or deepen directionally, give pertinent data on subsurface locations and measured and true vertical depths. Give blowout preventer program, if any.

24.

SIGNED

A. R. Reimers

TITLE

Agent for SG Interests  
Engineering Manager

DATE

11/8/94

(This space for Federal or State office use)

PERMIT NO.

APPROVAL DATE

APPROVED BY

TITLE

CONDITIONS OF APPROVAL, IF ANY:

NMOC D

~~PARMINGTON COPY~~

\*See Instructions On Reverse Side

APPROVED  
AS AMENDED

JAN 14 1994

DISTRICT MANAGER

Submit to Appropriate  
District Office  
State Lease - 4 copies  
Fee Lease - 3 copies

State of New Mexico  
Energy, Minerals and Natural Resources Department

Form C-102  
Revised 1-1-89

OIL CONSERVATION DIVISION

P.O. Box 2088  
Santa Fe, New Mexico 87504-2088

DISTRICT I  
P.O. Box 1960, Hobbs, NM 88240

DISTRICT II  
P.O. Drawer DD, Artesia, NM 88210

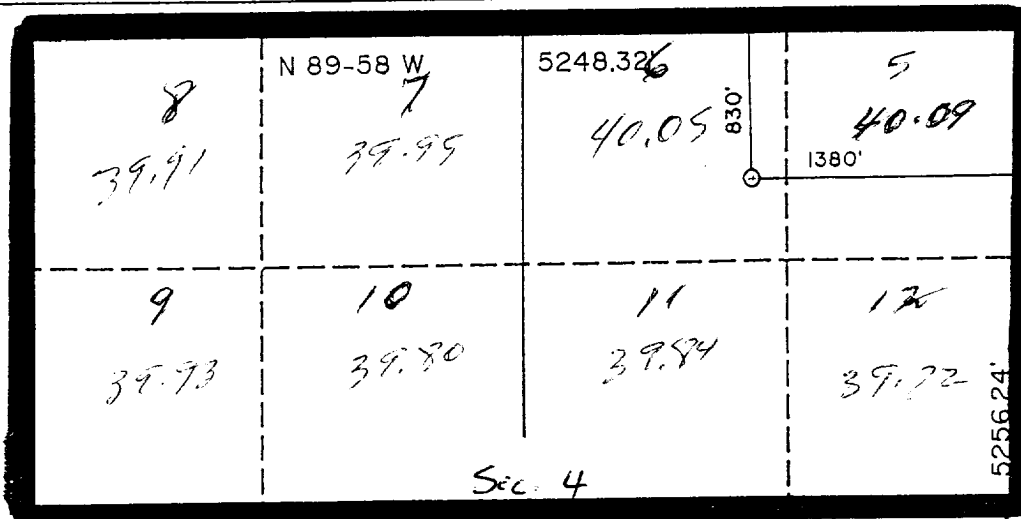
DISTRICT III  
1000 Rio Brazos Rd., Aztec, NM 87410

WELL LOCATION AND ACREAGE DEDICATION PLAT

All Distances must be from the outer boundaries of the section

Operator <b>SG Interests LTD</b>			Lease <b>HART CANYON 4</b>			Well No. <b>A-1</b>		
Unit Letter <b>B</b>	Section <b>4</b>	Township <b>30 NORTH</b>	Range <b>10 WEST</b>	County <b>SAN JUAN</b>				
Actual Footage Location of Well: <b>830</b> feet from the <b>NORTH</b> line and <b>1380</b> feet from the <b>EAST</b> line								
Ground level Elev. <b>6295</b>		Producing Formation <b>Coal</b>		Pool <b>Basin Flat</b>		Dedicated Acreage: <b>319.27</b> Acres		

- Outline the acreage dedicated to the subject well by colored pencil or hatchure marks on the plat below.
- If more than one lease is dedicated to the well, outline each and identify the ownership thereof (both as to working interest and royalty).
- If more than one lease of different ownership is dedicated to the well, have the interest of all owners been consolidated by communization, unitization, force-pooling, etc.?  
☐ Yes ☐ No If answer is "yes" type of consolidation \_\_\_\_\_  
If answer is "no" list the owners and tract descriptions which have actually been consolidated. (Use reverse side of this form if necessary.) \_\_\_\_\_  
No allowable will be assigned to the well until all interests have been consolidated (by communization, unitization, forced-pooling, or otherwise) or until a non-standard unit, eliminating such interest, has been approved by the Division.



OPERATOR CERTIFICATION

I hereby certify that the information contained herein is true and complete to the best of my knowledge and belief.

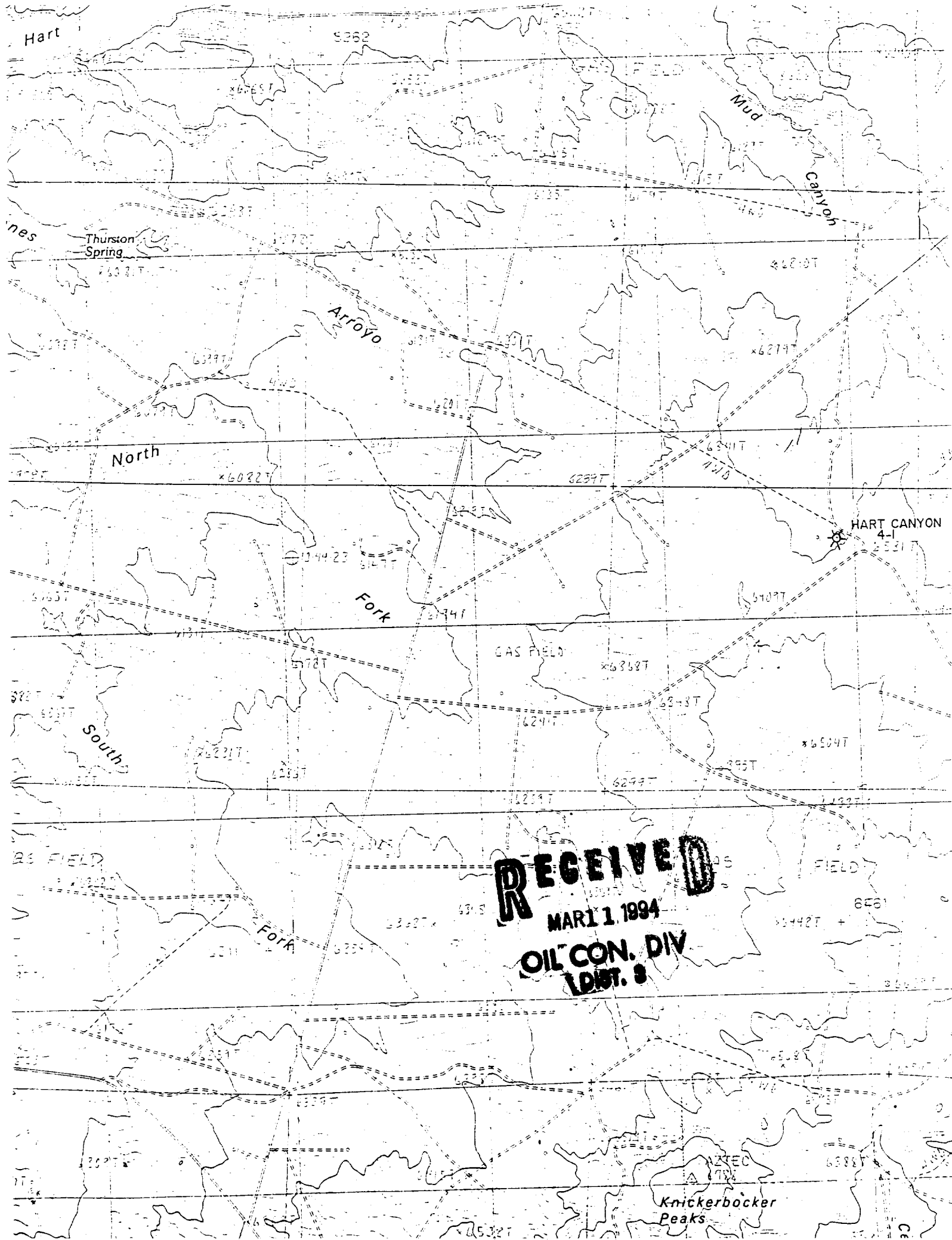
Signature  
**D.R. Reimers**  
Printed Name  
**Dennis R. Reimers**  
Position  
**Agent Engineering Manager**  
Company  
**SG Interests LTD**  
Date  
**1/8/94**

SURVEYOR CERTIFICATION

I hereby certify that the well location shown on this plat was plotted from field notes of actual surveys made by me or under my supervision, and that the same is true and correct to the best of my knowledge and belief.

Date Surveyed  
**DECEMBER 20, 1993**  
Signature & Seal of Professional Surveyor  
**ROY A. RUSH**  
Certificate No.  
**8094**

**RECEIVED**  
**MAR 11 1994**  
**OIL CON. DIV.**  
**DIST. 2**



**RECEIVED**

MAR 11 1994

OIL CON. DIV  
DIST. 3