

DISTRICT I
P.O. Box 1980, Hobbs, NM 88241-1980
DISTRICT II
P.O. Box Drawer DD, Artesia, NM 88211-0719
DISTRICT III
1000 Rio Brazos Rd., Aztec, NM 87410
DISTRICT IV
P.O. Box 2088, Santa Fe, NM 87504-2088

State of New Mexico
Energy, Minerals and Natural Resources Department

OIL CONSERVATION DIVISION

P.O. Box 2088
Santa Fe, New Mexico 87504-2088

Form C-101

Revised February 10, 1999

Instructions on back

Submit to Appropriate District Office

State Lease - 6 Copies

Fee Lease - 5 Copies

☐ AMENDED REPORT

APPLICATION FOR PERMIT TO DRILL, RE-ENTER, DEEPEN, PLUGBACK, OR ADD A ZONE

| | | |
|----------------------------------------------------------------------------------------------------------------------------------|-------------------------------------------------|-----------------------------------------------------------------------|
| ¹ Operator Name and Address TEXACO EXPLORATION & PRODUCTION, INC. 3300 N. Butler Suite 100, Farmington NM 87401 | | ² OGRID Number 022364 |
| ⁴ Property Code 11156 | ⁵ Property Name FEDERAL STATE COM | ³ API Number 30-045-29263 ⁶ Well No. 2 |

⁷ Surface Location

| Ul or lot no. | Section | Township | Range | Lot.Idn | Feet From The | North/South Line | Feet From The | East/West Line | County |
|---------------|---------|----------|-------|---------|---------------|------------------|---------------|----------------|----------|
| O | 32 | 30 N | 11 W | | 1120 | SOUTH | 1605 | EAST | SAN JUAN |

⁸ Proposed Bottom Hole Location If Different From Surface

| Ul or lot no. | Section | Township | Range | Lot.Idn | Feet From The | North/South Line | Feet From The | East/West Line | County |
|---------------------------------------------------------------------|---------|----------|-------|---------|-------------------------------|------------------|---------------|----------------|--------|
| 158.77 | | | | | | | | | |
| ⁹ Proposed Pool 1 CROUCH MESA - MESA VERDE EAST 75680 | | | | | ¹⁰ Proposed Pool 2 | | | | |

| | | | | |
|-----------------------------------|---------------------------------------|----------------------------------------|-------------------------------------|-----------------------------------------------|
| ¹¹ Work Type Code N | ¹² WellType Code G | ¹³ Rotary or C.T. ROTARY | ¹⁴ Lease Type Code PS | ¹⁵ Ground Level Elevation 5893' |
| ¹⁶ Multiple No | ¹⁷ Proposed Depth 3950' | ¹⁸ Formation MESA VERDE | ¹⁹ Contractor | ²⁰ Spud Date |

²¹ Proposed Casing and Cement Program

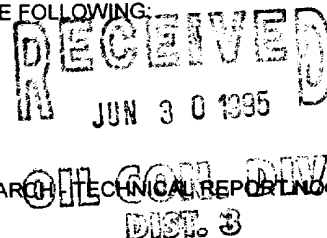
| SIZE OF HOLE | SIZE OF CASING | WEIGHT PER FOOT | SETTING DEPTH | SACKS OF CEMENT | EST. TOP |
|--------------|----------------|-----------------|---------------|-----------------|----------|
| 11" | 8-5/8" | 24# | 300' | 215 SX | CIRC. |
| 7-7/8" | 4-1/2" | 11.6# | 3950' | 1050 SX | CIRC. |
| | | | | | |
| | | | | | |

²² Describe the proposed program. If this application is to DEEPEN or PLUG BACK give the data on the present productive zone and proposed new productive zone. Describe the blowout prevention program, if any. Use additional sheets if necessary.

TEXACO PROPOSES TO DRILL THIS DEVELOPMENT WELL. ATTACHED FOR REFERENCE ARE THE FOLLOWING:

- SURVEY
- MUD PROGRAM
- WELLSITE LAYOUT
- LOGGING PROGRAM
- AREA PLAT
- CEMENTING PROGRAM
- CASING PROGRAM
- BLOWOUT PREVENTION EQUIPMENT DIAGRAM

ARCHAEOLOGICAL CLEARANCE HAS BEEN RECOMMENDED. MOORE ANTHROPOLOGICAL RESEARCH, INC. TECHNICAL REPORT NO. 95-010



²³ I hereby certify that the rules and regulations of the Oil Conservation Division have been complied with and that the information given above is true and complete to the best of my knowledge and belief.

Signature *Ted A. Tipton*

Printed Name Ted A. Tipton

Title Operating Unit Manager

Date 6/28/95 Telephone 325-4397

OIL CONSERVATION DIVISION

Approved By: *Emilio Burch*

Title: DEPUTY OIL & GAS INSPECTOR, DIST. #3

Approval Date JUN 30 1995 Expiration Date JUN 30 1996

Conditions of Approval: Attached *2 HSD C-104 For CA*

District I
PO Box 1988, Hobbs, NM 88241-1988
District II
PO Drawer DD, Artesia, NM 88211-0719
District III
1000 Rio Brazos Rd., Aztec, NM 87410
District IV
PO Box 2088, Santa Fe, NM 87504-2088

State of New Mexico
Energy, Minerals & Natural Resources Department

OIL CONSERVATION DIVISION
PO Box 2088
Santa Fe, NM 87504-2088

Form C-102

Revised February 21, 1994

Instructions on back

Submit to Appropriate District Office

State Lease - 4 Copies

Fee Lease - 3 Copies

☐ AMENDED REPORT

WELL LOCATION AND ACREAGE DEDICATION PLAT

| | | | | | |
|------------------------------|--|----------------------------------------------------------|--|---------------------------------------------|----------------------|
| 1 AFI Number 30-045-29263 | | 2 Pool Code 75680 | | 3 Pool Name CROUCH MESA - MESA VERDE EST | |
| 4 Property Code 11156 | | 5 Property Name Federal State Com | | | 6 Well Number 2 |
| 7 OGRID No. 022364 | | 8 Operator Name TEXACO EXPLORATION & PRODUCTION, INC. | | | 9 Elevation 5893' |

10 Surface Location

| UL or lot no. | Section | Township | Range | Lot Idn | Feet from the | North/South line | Feet from the | East/West line | County |
|---------------|---------|----------|-------|---------|---------------|------------------|---------------|----------------|----------|
| 0 | 32 | 30N | 11W | | 1120 | South | 1605 | East | San Juan |

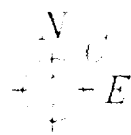
11 Bottom Hole Location If Different From Surface

| UL or lot no. | Section | Township | Range | Lot Idn | Feet from the | North/South line | Feet from the | East/West line | County |
|---------------|---------|----------|-------|---------|---------------|------------------|---------------|----------------|--------|
| | | | | | | | | | |

| | | | |
|------------------------------|--------------------|-----------------------|--------------|
| 12 Dedicated Acres 158.77 | 13 Joint or Infill | 14 Consolidation Code | 15 Order No. |
|------------------------------|--------------------|-----------------------|--------------|

NO ALLOWABLE WILL BE ASSIGNED TO THIS COMPLETION UNTIL ALL INTERESTS HAVE BEEN CONSOLIDATED
OR A NON-STANDARD UNIT HAS BEEN APPROVED BY THE DIVISION

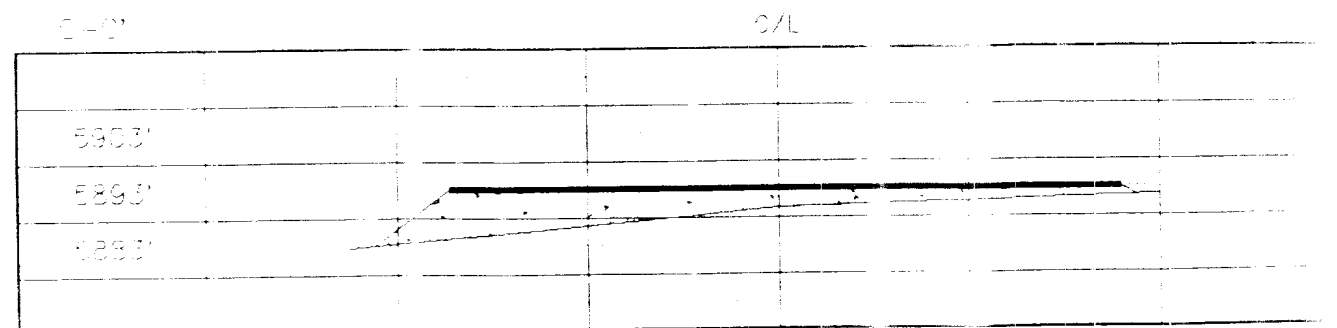
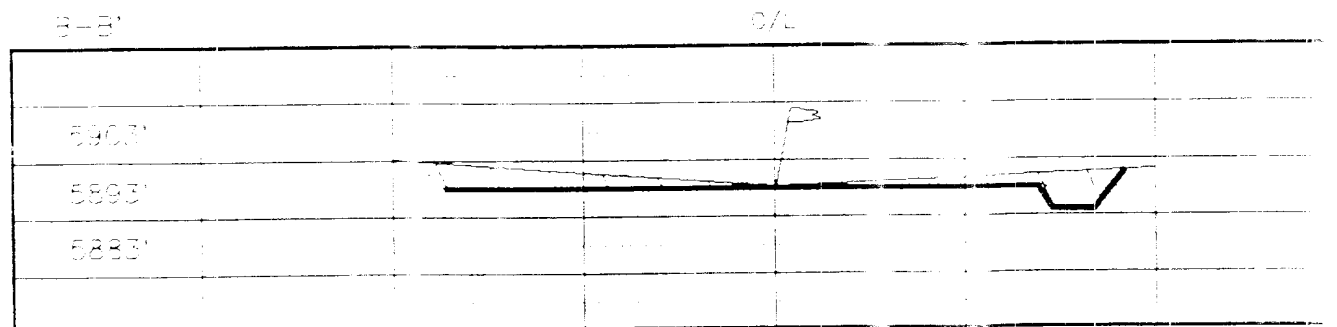
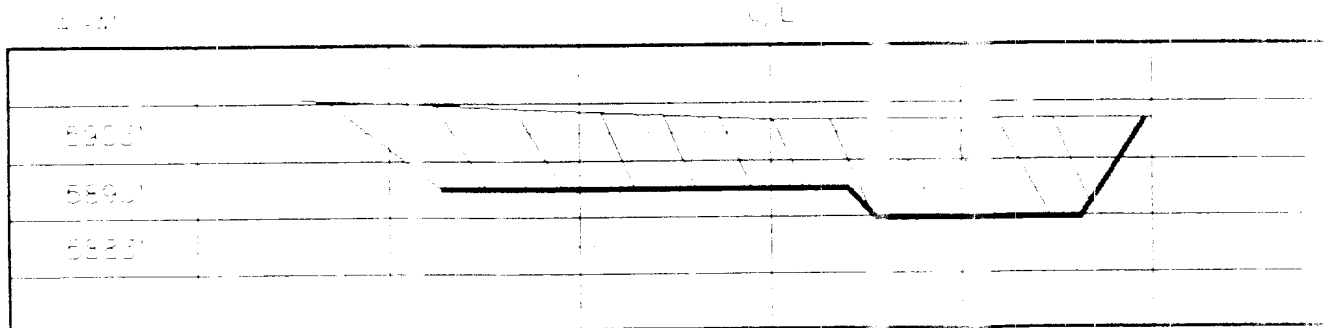
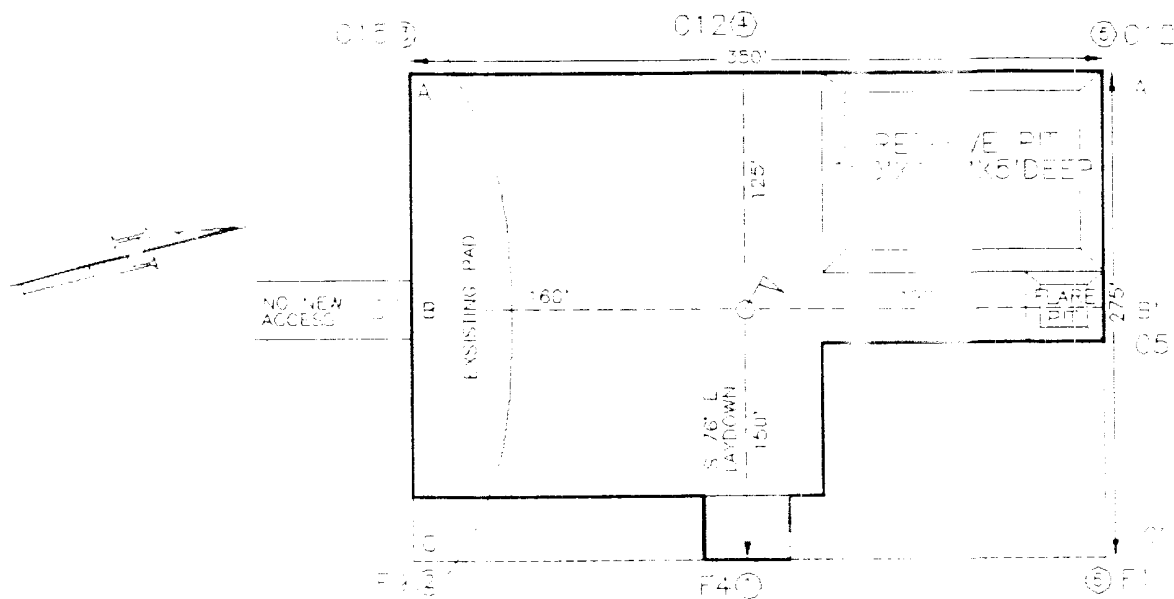
| | | | | |
|----------|----------|---|-------|-----------------------------------------------------------------------------------------------------------------------------------------------------------------------------------------------------------------------------------------------------------------------------------------------------------------------------------------------------------------------------------------|
| 16 | 5253.60' | | | 17 OPERATOR CERTIFICATION I hereby certify that the information contained herein is true and complete to the best of my knowledge and belief JAC Jy Signature Ted A. Tipton Printed Name Operating Unit Manager Title 6-27-95 Date |
| | 32 | | | |
| 5293.20' | 32 | | | 18 SURVEYOR CERTIFICATION I hereby certify that the well location shown on this plat was plotted from field notes of actual surveys made by me or under my supervision, and that the same is true and correct to the best of my belief. 5-26-95 Date of Survey Signature and Seal of Professional Surveyor: HERNANDEZ C. EDWARDS 8857 6857 Certification Number |
| 2 | 3 | 4 | 1605' | |
| 2652.54' | | | | 2574.00' |

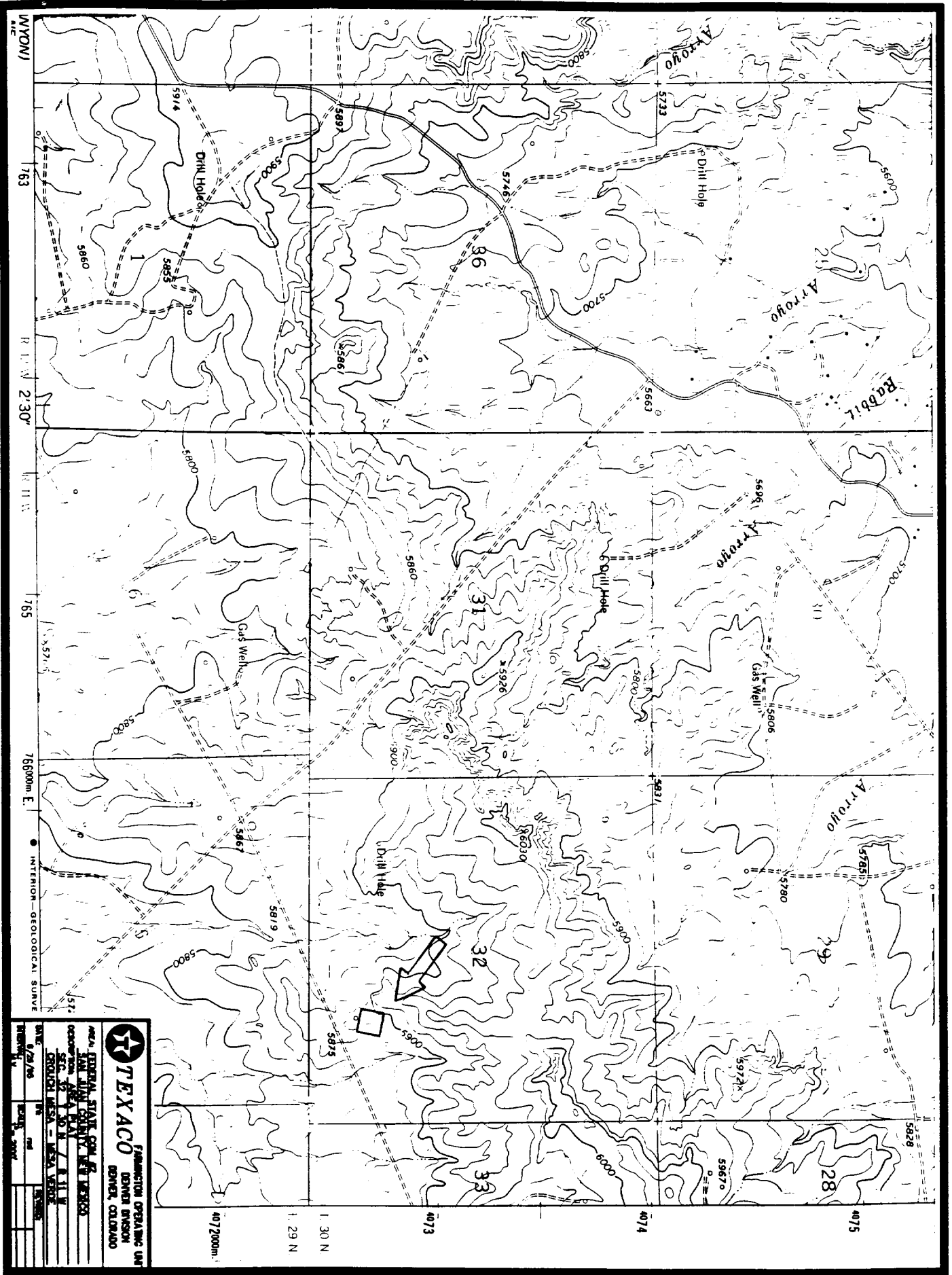


SURVEYS, INC.

P.O. BOX 6812
FARMINGTON NEW MEXICO 87402
(505) 325-1654

NAME: TEXACO FEDERAL STATE COM #2
FOOTAGE: 1120' FSL 605' FEL
SECTION: 32 30 R 11 W, NMPM
COUNTY: SAN AN STATE: NEW MEXICO
ELEVATION: 5893 DATE: 5/26/95





TEXACO FACILITY OPERATING UNIT
DENVER DIVISION
DENVER, COLORADO

DATE: 6/29/76
BY: [Signature]
CHECKED: [Signature]
APPROVED: [Signature]

PROJECT: [Blank]
DESCRIPTION: [Blank]
SHEET: 1 OF 1
CROSSING: [Blank]

Federal State Com No. 2
San Juan Co., NM

CASING PROGRAM

Conductor

Casing: (Contractor discretion)

Surface

Casing: 11" hole, 8-5/8", 24#, WC-50, LTC, (surface - 300')

Production

Casing: 7-7/8" hole, 4-1/2", 11.6#, LS-65. LTC, (surface - 3950')

Tubing: 2-3/8", 4.7#, WC-50, EUE, (surface - 3950')

Federal State Com No. 2
San Juan Co., NM

CEMENTING PROGRAM

8-5/8" SURFACE CASING

WELL DATA:

DEPTH: 300 FT.
CASING: 8-5/8 IN.
OPEN HOLE: 11 IN.

CEMENT SYSTEMS:

215 SX CLASS G + 2 % S1 (CALCIUM CHLORIDE), 1/4# FLOCELE

DENSITY: 15.8 LB/GAL
YIELD: 1.15 CUFT/SX
TOC: CIRCULATE TO SURFACE

4-1/2" PRODUCTION CASING

WELL DATA:

DEPTH: 3950 FT.
CASING: 4-1/2 IN.
OPEN HOLE: 7 7/8 IN.

CEMENT SYSTEMS:

LEAD: 700 SX 35/65 POZ + 6 % GEL + 10#/SK GILSONITE, 2 % CC, 1/4# FLOCELE

DENSITY: 12.6 LB/GAL
YIELD: 1.89 CUFT/SX

TAIL: 350 SX 50/50 POZ + 2 % GEL + 5#/SK GILSONITE, 2 % CC, 1/4# FLOCELE

DENSITY: 14 LB/GAL
YIELD: 1.22 CUFT/SX
TOC: CIRCULATE TO SURFACE

Federal State Com No. 2
San Juan Co., NM

MUD PROGRAM

| <u>Est. Interval (RKB, ft.)</u> | <u>Type Mud</u> | <u>Mud Weight (ppg)</u> | <u>Visc. sec/qt</u> | <u>Fluid Loss (cc)</u> | <u>Remarks</u> |
|-----------------------------------------|-----------------|---------------------------------|-------------------------|--------------------------------|-----------------------------------------------|
| 0'-300' | Fresh water | 8.4 | 28 | NC | Circ reserve, pH 9 w/lime |
| 300'-TD | Fresh water/gel | 8.4-8.5 | 30 | 20 | Circ reserve, pH 9 w/lime 20 cc WL near TD |

Federal State Com No. 2
San Juan Co., NM

LOGGING PROGRAM

1) Electric Logging

Interval

Logs

Run #1

Open hole:

2,000' - T.D.

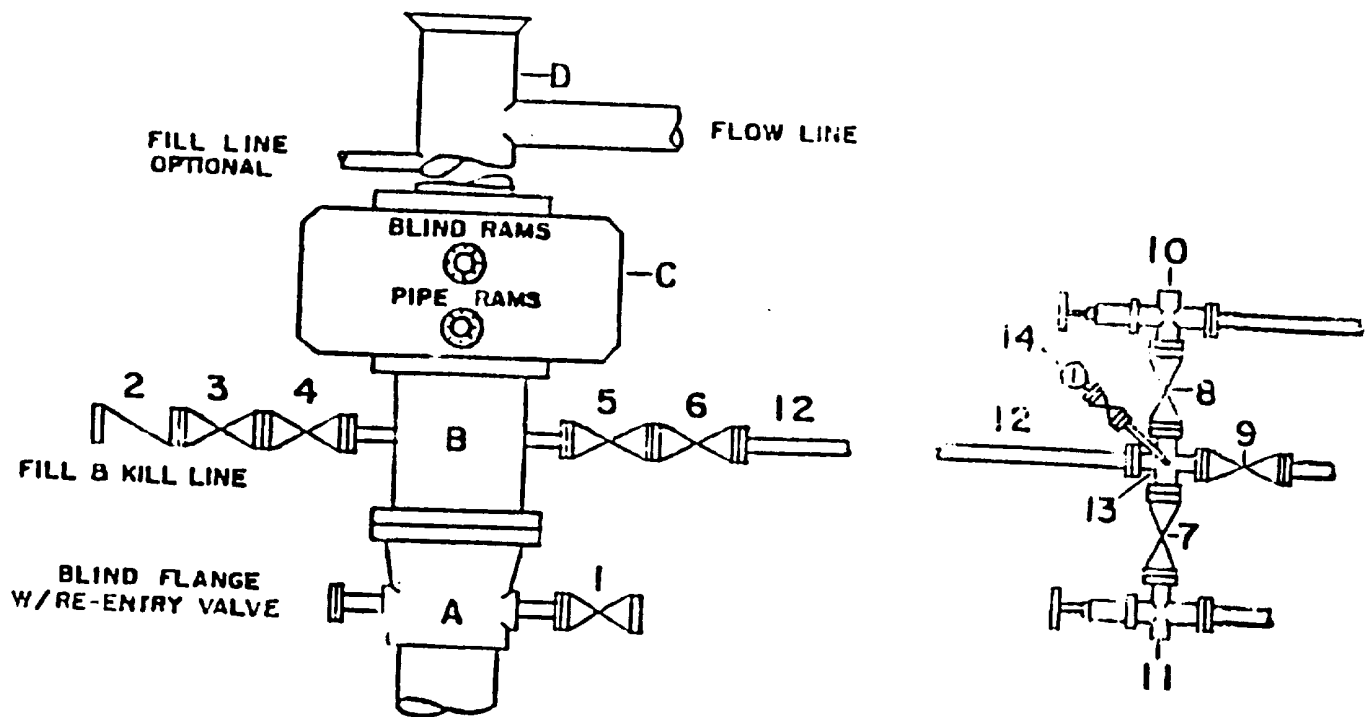
1) DEN-CNL-GR

SURFACE CASING to T.D.

2) DIL

DRILLING CONTROL CONDITION II-3000 PSI W/P

WELL REQUIRED
20 _____



DRILLING CONTROL

MATERIAL LIST - CONDITION II

- A Texaco Wellhead
- B 3000# W.P. drilling spool with a 2" minimum flanged outlet for kill-line and 2" minimum flanged outlet for choke line
- C 3000# W.P. Dual ram type preventer, hydraulic operated with 1" steel, 3000# W.P. control lines (where sub-structure height is adequate, 2-3000# W.P. single ram type preventers may be utilized.)
- D Bell nipple with flowline and fill-up outlets. (Kill line may also be used for fill-up line.)
- 1,3,4, 7,8 2" minimum 3000# W.P. flanged full opening steel gate valve, or Halliburton Lo Torc Plug valve.
- 2 2" minimum 3000# W.P. back pressure valve
- 5,6,9 1" minimum 3000# W.P. flanged full opening steel gate valve, or Halliburton Lo Torc Plug valve.
- 12 3" minimum schedule 80, Grade "B", seamless line pipe
- 13 2" minimum x 3" minimum 3000# W.P. flanged cross
- 10, 11 2" minimum 3000# W.P. adjustable choke bodies
- 14 Cameron Mud Gauge or equivalent (location optional in choke line.)

| | | | |
|-------------|------|----------|----------|
| APP. | DATE | EST. NO. | DWG. NO. |
| AWN | | | |
| CHECKED BY: | | | |
| REVIEW BY: | | | |



TEXACO, INC.
MIDLAND DIVISION
MIDLAND, TEXAS



EXHIBIT D