

RECEIVED
DISTRICT I BLM
P.O. Box 1980, Hobbs, NM 88241-1980

RECEIVED
DISTRICT II
P.O. Drawer DD, Artesia, NM 88211-0719

DISTRICT III
1000 Edo Brazos Rd., Artec, N.M. 87410

DISTRICT IV
PO Box 2088, Santa Fe, NM 87504-2088

State of New Mexico
Energy, Minerals & Natural Resources Department

Form C-102

Revised February 21, 1994

Instructions on back
Submit to Appropriate District Office
State Lease - 4 Copies
Fee Lease - 3 Copies

OIL CONSERVATION DIVISION

P.O. Box 2088
Santa Fe, NM 87504-2088

☐ AMENDED REPORT

WELL LOCATION AND ACREAGE DEDICATION PLAT

*API Number 30-045-29545		*Pool Code 71629	*Pool Name Basin Fruitland Coal
*Property Code 009260	*Property Name San Juan 32-7 Unit		*Well Number 228
*OGRID No. 017654	*Operator Name Phillips Petroleum CO.		*Elevation 6582

¹⁰ Surface Location

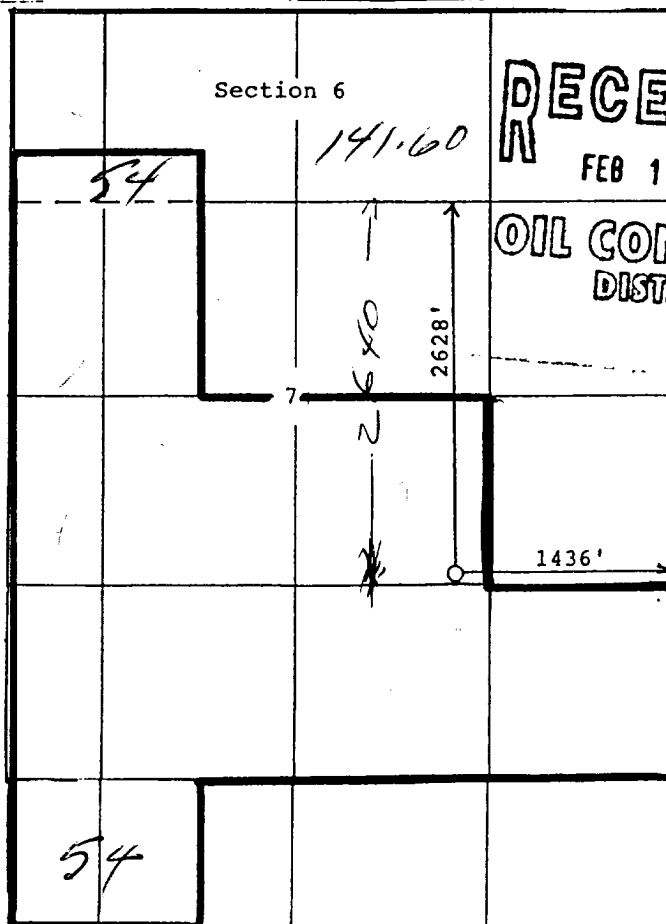
UL or lot no.	Section	Township	Range	Lot km	Feet from the	North/South line	Feet from the	East/West line	County
G	7	31 N	7 W		2628	North	1436	East	San Juan

¹¹ Bottom Hole Location If Different From Surface

UL or lot no.	Section	Township	Range	Lot km	Feet from the	North/South line	Feet from the	East/West line	County

*Dedicated Acres 317.23	*Joint or Infill Y	*Consolidation Code U	*Order No.
----------------------------	-----------------------	--------------------------	------------

NO ALLOWABLE WILL BE ASSIGNED TO THIS COMPLETION UNTIL ALL INTERESTS HAVE BEEN CONSOLIDATED
OR A NON-STANDARD UNIT HAS BEEN APPROVED BY THE DIVISION



RECEIVED
FEB 17 1998
OIL CON. DIV.
DIST. 3

¹⁷ OPERATOR CERTIFICATION

I hereby certify that the information contained herein is true and complete to the best of my knowledge and belief

Signature
W. D. Jaap
Printed Name
Operations Support Dir.
Title
7-14-97
Date

¹⁸ SURVEYOR CERTIFICATION

I hereby certify that the well location shown on this plat was plotted from field notes of actual surveys made by me or under my supervision, and that the same is true and correct to the best of my knowledge and belief

Date of Survey
Signature of Registered Professional Surveyor
8894