

DISTRICT I
PO Box 1980, Hobbs, NM 88240

State of New Mexico
Energy, Minerals and Natural Resources Department

ORIGINAL

Form C-101
Revised February 21, 1994

DISTRICT II
PO Box DD, Artesia, NM 88210

OIL CONSERVATION DIVISION

Instructions on back
Submit to Appropriate District Office

DISTRICT III
1000 Rio Brazos Rd., Aztec, NM 87410

P.O. Box 2088
Santa Fe, NM 87504-2088

State Lease - 6 Copies
Fee Lease - 5 Copies

DISTRICT IV
2040 South Pacheco, Santa Fe, NM 87505

AMENDED REPORT

APPLICATION FOR PERMIT TO DRILL, RE-ENTER, DEPEN, PLUGBACK, OR ADD A ZONE

1. OPERATOR NAME AND ADDRESS CROSS TIMBERS OPERATING COMPANY 6001 Highway 64, Farmington, NM 87401 (505) 632-5200 Gary L. Markestad		2. OGRID NUMBER 167067	
4. PROPERTY CODE 23815		3. API NUMBER 30-045-29707	
5. PROPERTY NAME RUBY CORSCOT A		6. WELL NUMBER 1	

RECEIVED
OCT 26 1998

OIL CON. DIV.
DIST. 3

U/I or lot no.	Section	Township	Range	Lot Idn	Feet from the	North/South line	Feet from the	East/West line	County
N	25	30N	12W		1170	SOUTH	1850'	WEST	SAN JUAN

8. PROPOSED BOTTOM HOLE LOCATION IF DIFFERENT FROM SURFACE

U/I or lot no.	Section	Township	Range	Lot Idn	Feet from the	North/South line	Feet from the	East/West line	County
9. Proposed Pool 1 71629					10. Proposed Pool 2				

11. Work Type Code N	12/ Well Type Code G	13. Cable/Rotary ROTARY	14. Lease Type Code FEE	15. Ground Level Elevation 5650'
16. Multiple NO	17. Proposed Depth 2100'	18. Formation BASIN FRIUTLAND COAL	19. Contractor Not Awarded	20. Spud Date 11/98

21. Proposed Casing and Cement Program

Hole Size	Casing Size	Casing weight/foot	Setting Depth	Sacks of Cement	Estimated TOC
8-3/4"	7"	23#, J-55, ST&C	200'	100	SURFACE
6-1/4"	4-1/2"	10.5#, J-55, ST&C	2100'	200	SURFACE

22. Describe the proposed program. If this application is to DEEPEN or PLUG BACK give the data on the present productive zone and proposed new productive zone. Describe the blowout prevention program, if any. Use additional sheets if necessary.

Casing/Cement Program to 200': 100 sacks Class B cement containing 2% CACI2, 1/4 PPS celloflake. Circulate to surface.
Casing/Cement Program to 2100': 100 sacks of 35/65/6 Poz cement containing 6% gel, 5 PPS Gilsonite, 1/4 PPS celloflake, followed by 100 sacks of Class G cement containing 5 PPS gilsonite, 1/4 PPS celloflake. Use 25% excess over volume calculated from open hole logs to bring TOC up to surface.

A rig equipped with a double BOP will be used.

23. I hereby certify that the information given above is true and complete to the best of my knowledge and belief.

Signature: *Gary L. Markestad*
Printed Name: GARY L. MARKESTAD,
Title: VICE PRESIDENT - PRODUCTION
Date: 10/22/98
Phone: (505) 632-5200

OIL CONSERVATION DIVISION	
10-28-98	
APPROVED BY:	<i>Ernie Busch</i>
TITLE:	DEPUTY OIL & GAS INSPECTOR, DIST. #3
Approval Date:	OCT 28 1998
Expiration Date:	OCT 28 1999
Conditions of Approval:	
Attached:	

District I
PO Box 1980, Hobbs, NM, 88241-1980

State of New Mexico
Energy, Minerals & Natural Resources Department

Form C-102
Revised February 21, 1994

District II
PO Drawer DD, Artesia, NM 88211-0719

OIL CONSERVATION DIVISION
PO Box 2088
Santa Fe, NM 87504-2088

Instructions on back
Submit to Appropriate District Office
State Lease - 4 Copies
Fee Lease - 3 Copies

District III
1000 Rio Brazos Rd., Aztec, NM 87410

AMENDED REPORT

District IV
PO Box 2088, Santa Fe, NM 87504-2088

WELL LOCATION AND ACREAGE DEDICATION PLAT

¹ API Number 30-045-29707		² Pool Code 71629	³ Pool Name BASIN FRUITLAND COAL
⁴ Property Code 23815	⁵ Property Name RUBY CORSCOT A		⁶ Well Number 1
⁷ GRID No. 167067	⁸ Operator Name CROSS TIMBERS OPERATING COMPANY		⁹ Elevation 5650

¹⁰ Surface Location

UL or lot no.	Section	Township	Range	Lot Idn	Feet from the	North/South line	Feet from the	East/West line	County
N	25	30N	12W		1170	SOUTH	1850	WEST	SAN JUAN

¹¹ Bottom Hole Location If Different From Surface

UL or lot no.	Section	Township	Range	Lot Idn	Feet from the	North/South line	Feet from the	East/West line	County

¹² Dedicated Acres W 320	¹³ Joint or Infill	¹⁴ Consolidation Code	¹⁵ Order No.
--	-------------------------------	----------------------------------	-------------------------

NO ALLOWABLE WILL BE ASSIGNED TO THIS COMPLETION UNTIL ALL INTERESTS HAVE BEEN CONSOLIDATED OR A NON-STANDARD UNIT HAS BEEN APPROVED BY THE DIVISION

¹⁷ OPERATOR CERTIFICATION

I hereby certify that the information contained herein is true and complete to the best of my knowledge and belief

Gary L. Markestad
Signature

Gary L. Markestad
Printed Name

Vice-President / Production
Title

10/22/98
Date

¹⁸ SURVEYOR CERTIFICATION

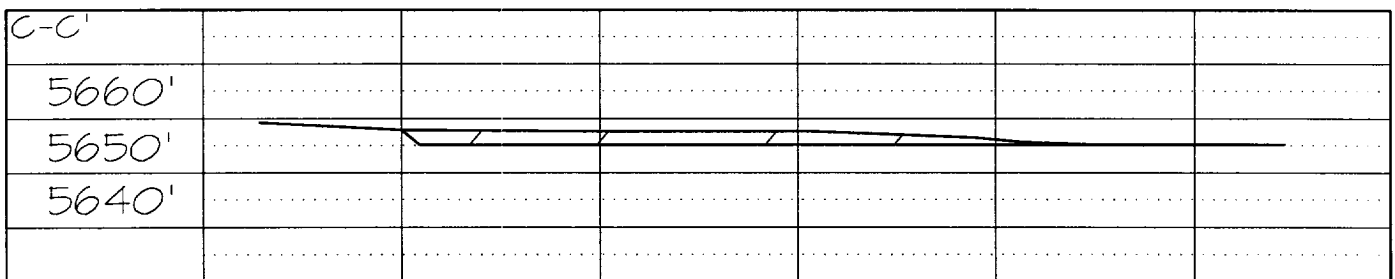
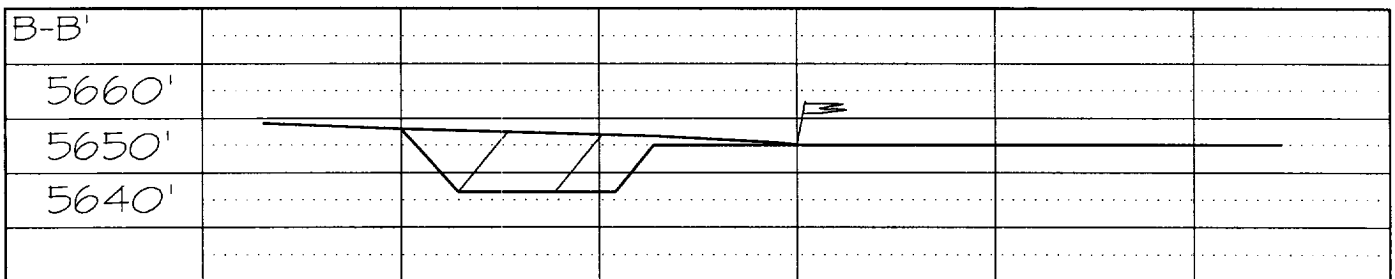
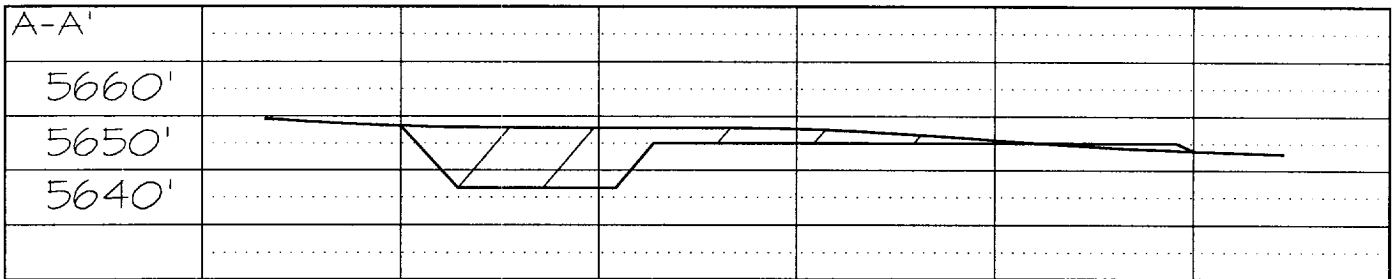
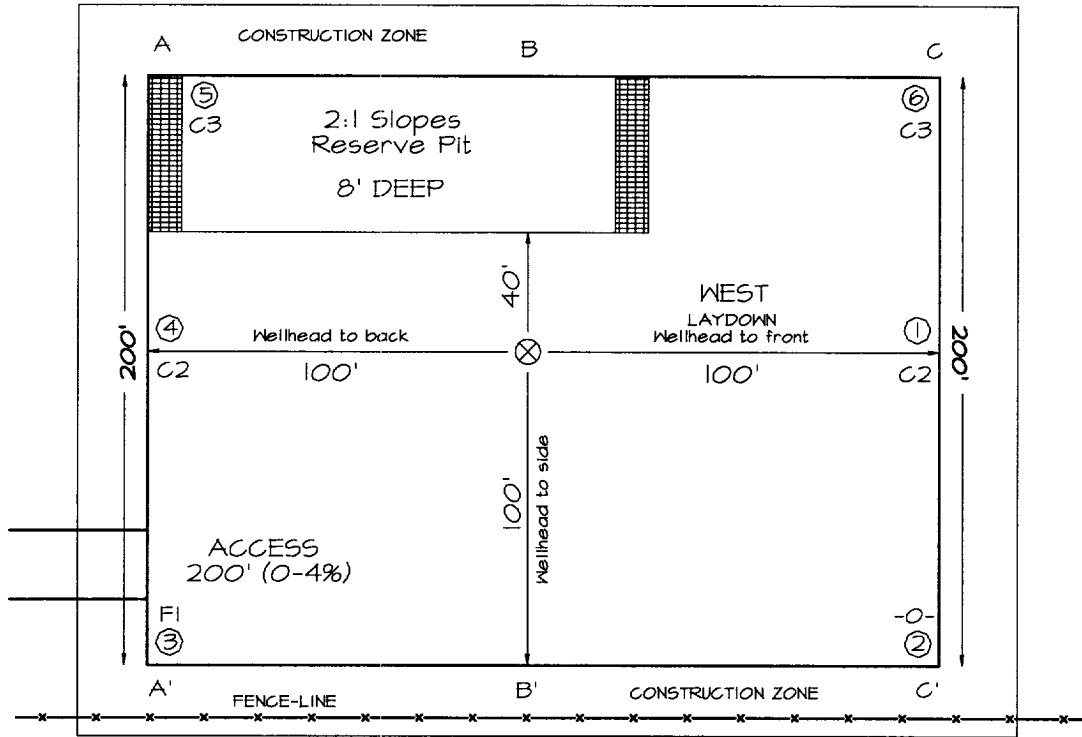
I hereby certify that the well location shown on this plat was plotted from field notes of actual surveys made by me or under my supervision, and that the same is true and correct to the best of my belief.

OCTOBER 16, 1998
Date of Survey

Signature and Seal of Professional Surveyor

6857
Certificate Number

CROSS TIMBERS OPERATING COMPANY
RUBY CORSCOT A #1, 1170' FSL & 1850' FWL
SECTION 25, T30N, R12W, NMPM, SAN JUAN COUNTY, NEW MEXICO
GROUND ELEVATION: 5650' DATE: OCTOBER 16, 1998



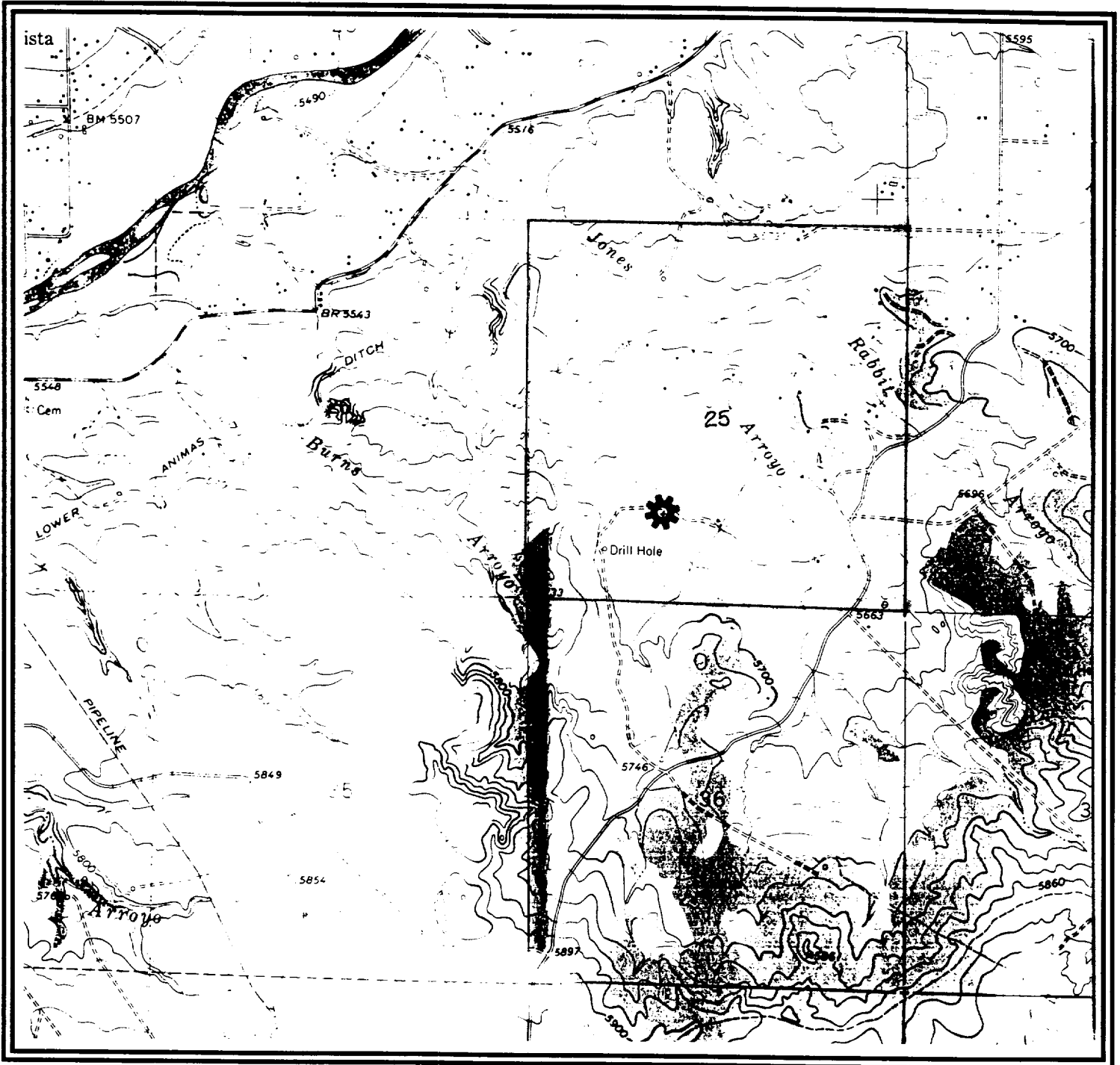
Note: Contractor should call One-Call for location of any marked or unmarked buried pipelines or cables on well pad and/or access road at least two (2) working days prior to construction

CROSS TIMBERS OPERATING COMPANY

RUBY CORSCOT A #1

1170' FSL- 1850' FWL, Sec. 25, T30N-R12W

Proposed Basin Fruitland Coal Well



USGS Flora Vista, New Mexico 7.5' Series Scale 1:24000