

DISTRICT I
P.O. Box 1980, Hobbs, NM 88241-1980

DISTRICT II
P.O. Drawer DD, Artesia, NM 88211-0719

DISTRICT III
1000 Rio Brazos Rd., Aztec, NM 87410

DISTRICT IV
PO Box 2088, Santa Fe, NM 87504-2088

State of New Mexico
Energy, Minerals and Natural Resources Department

OIL CONSERVATION DIVISION
PO BOX 2088
Santa Fe, NM 87504-2088

Form C-101
Revised February 10, 1994
Instructions on back
Submit to Appropriate District Office
State Lease - 6 Copies
Fee Lease - 5 Copies

RECEIVED
MAY - 4 1999
OIL CON. DIV.
DIST. 3

AMENDED REPORT

APPLICATION FOR PERMIT TO DRILL, RE-ENTER, DEEPEN, PLUGBACK, OR ADD A ZONE

Operator Name and Address Williams Production Company c/o Walsh Engineering 7415 E. Main St., Farmington, NM 87402		OGRID Number 120782
Property Code 008480	Property Name 17033 Rosa Unit	API Number 30 - 045-29844 29899
		Well No. 167

7 Surface Location									
UL or lot no.	Section	Township	Range	Lot Idn	Feet from the	North/South Line	Feet from the	East/West Line	County
K	8	31N	6W		2315	South	1410	West	San Juan

8 Proposed Bottom Hole Location If Different From Surface									
UL or lot no.	Section	Township	Range	Lot Idn	Feet from the	North/South Line	Feet from the	East/West Line	County
J	8	31N	6W		1750	South	1750	East	San Juan
Proposed Pool 1 Blanco Mesa Verde					Proposed Pool 2				

11 Work Type Code N	12 Well Type Code G	13 Cable/Rotary R	14 Lease Type Code P	15 Ground Level Elevation 6334'
16 Multiple N0	17 Proposed Depth 6100' TVD; 6680' MD	18 Formation Lewis	19 Contractor Aztec WS	20 Spud Date September 1999

21 Proposed Casing and Cement Program					
Hole Size	Casing Size	Casing weight/feet	Setting Depth	Sacks of Cement	Estimated TOC
12-1/4"	9-5/8"	36#	250'	130 sx	Surface
8-3/4"	7"	20#	3900'	455 sx + 150 sx	Surface
6-1/4"	4-1/2"	10.5#	3800' - 6680'	80 sx + 290 sx	3800'

22 Describe the proposed program. If this application is to DEEPEN or PLUG BACK give the data on the present productive zone and proposed new productive zone. Describe the blowout prevention program, if any. Use additional sheets if necessary.

Williams Production Company proposes to drill a directional well to test the Mesa Verde formaton.
A 2000# double ram BOP will be installed and tested to 1500# after surface casing is set.

23 I hereby certify that the information given above is true and complete to the best of my knowledge and belief. Signature: <i>Paul C. Thompson</i>		OIL CONSERVATION DIVISION	
Printed name: Paul C. Thompson, P.E.		Approved by: <i>Espinoza</i> 5-6-99	
Title: Agent		Title: DEPUTY OIL & GAS INSPECTOR, DIST. 3	
Date: 05/03/99		Approval Date: MAY - 6 1999 Expiration Date: MAY - 6 2000	
Phone: 505.327.4892		Conditions of Approval Attached <input type="checkbox"/>	

District I
PO Box 1980, Hobbs, NM 88241-1980

District II
PO Drawer 00, Artesia, NM 88211-0719

District III
1000 Rio Brazos Rd., Aztec, NM 87410

District IV
PO Box 2088, Santa Fe, NM 87504-2088

State of New Mexico
Energy, Minerals & Natural Resources Department

OIL CONSERVATION DIVISION
PO Box 2088
Santa Fe, NM 87504-2088

Form C-102
Revised February 21, 1994
Instructions on back
Submit to Appropriate District Office
State Lease - 4 Copies
Fee Lease - 3 Copies

99 APR 13 AM 7:52 AMENDED REPORT

WELL LOCATION AND ACREAGE DEDICATION PLAT

070 FARMINGTON, NM

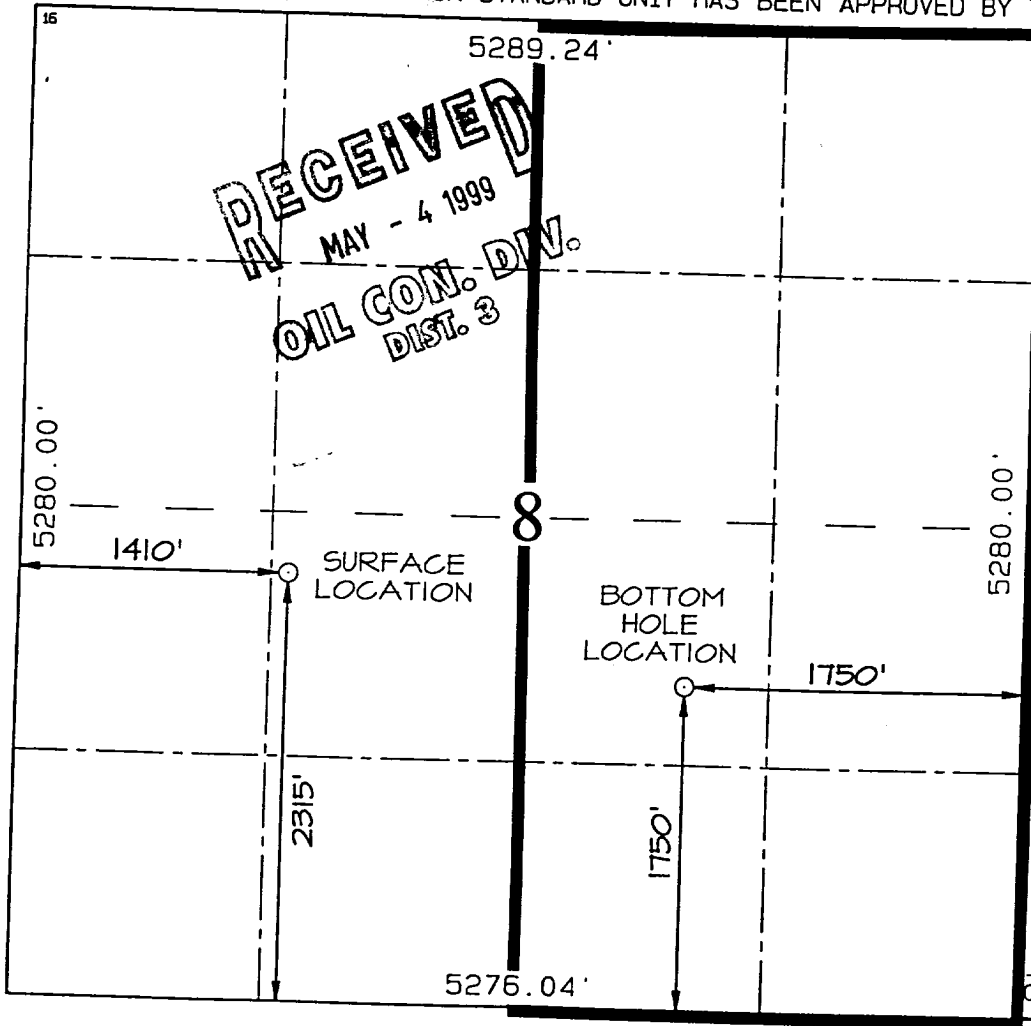
*API Number 30-045-29899		*Pool Code 72319	*Pool Name Blanco Mesa Verde	
*Property Code 008480	*Property Name ROSA UNIT		*Well Number 167	
*OGRID No. 120782	*Operator Name WILLIAMS PRODUCTION COMPANY			*Elevation 6334'

UL or lot no.	Section	Township	Range	Lot Idn	Feet from the	North/South line	Feet from the	East/West line	County
K	8	31N	6W		2315	SOUTH	1410	WEST	SAN JUAN

UL or lot no.	Section	Township	Range	Lot Idn	Feet from the	North/South line	Feet from the	East/West line	County
J	8	31N	6W		1750	SOUTH	1750	EAST	SAN JUAN

12 Dedicated Acres: 320
13 Joint or Infill: Y
14 Consolidation Code: U
15 Order No.

NO ALLOWABLE WILL BE ASSIGNED TO THIS COMPLETION UNTIL ALL INTERESTS HAVE BEEN CONSOLIDATED OR A NON-STANDARD UNIT HAS BEEN APPROVED BY THE DIVISION

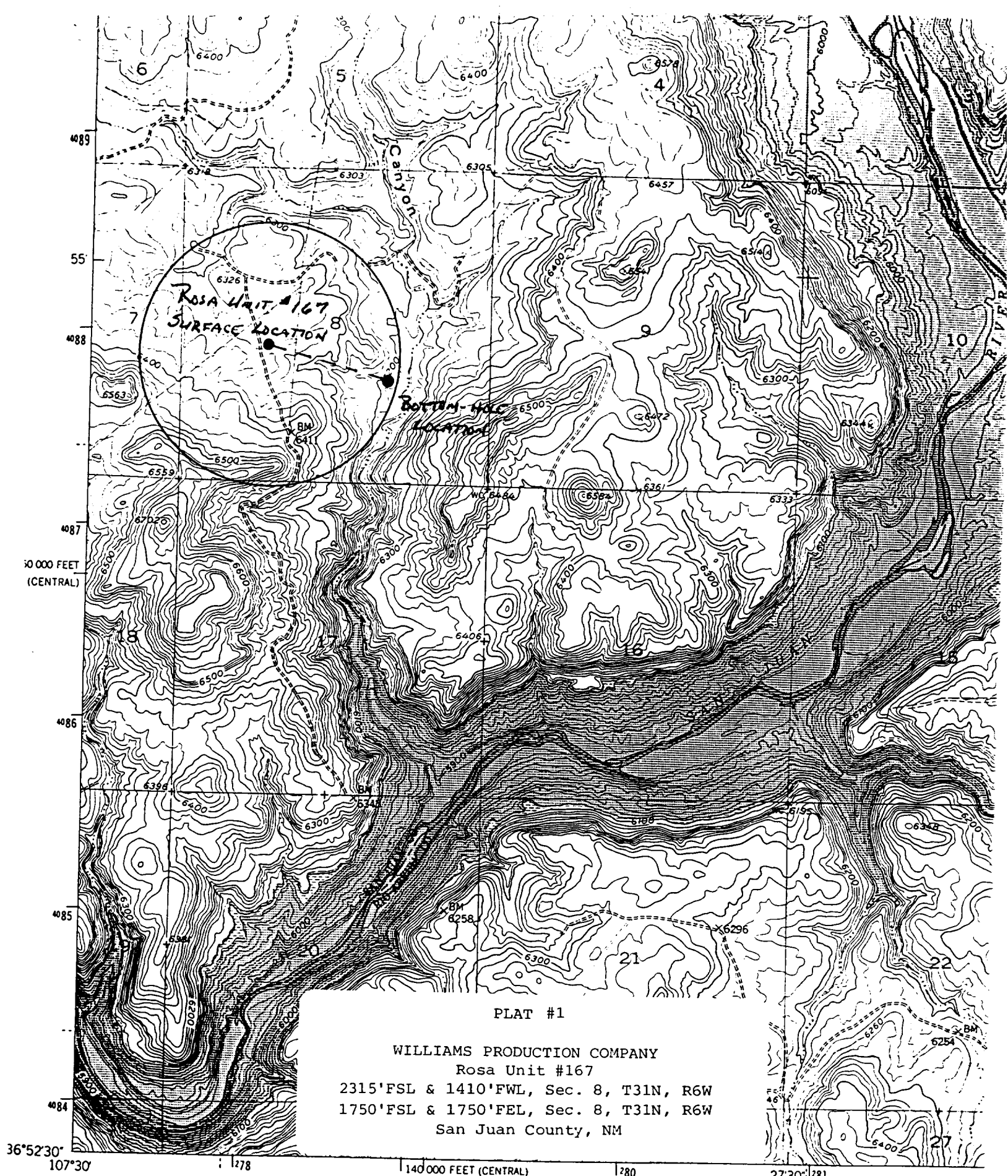


17 OPERATOR CERTIFICATION
I hereby certify that the information contained herein is true and complete to the best of my knowledge and belief

Paul C. Thompson
Signature
Paul C. Thompson
Printed Name
Agent
Title
4/12/99
Date

18 SURVEYOR CERTIFICATION
I hereby certify that the well location shown on this plat was plotted from field notes of actual surveys made by me or under my supervision and that the same is true and correct to the best of my belief.

MARCH 4, 1999
Date of Survey
Signature and Seal of Professional Surveyor
NEALE C. EDWARDS
NEW MEXICO
6857
REGISTERED PROFESSIONAL SURVEYOR
Certificate Number 6857



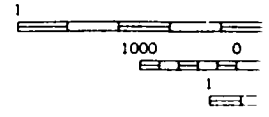
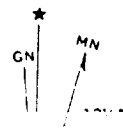
RIVER
SE

Mapped, edited, and published by the Geological Survey

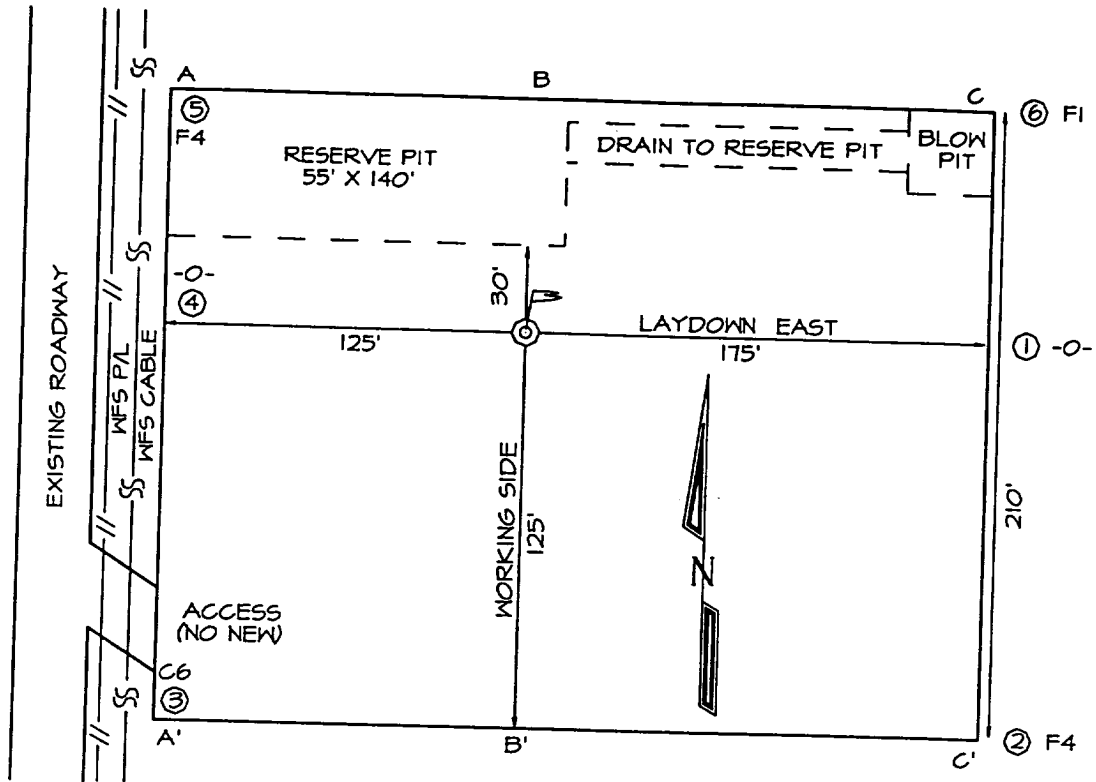
Control by USGS and NOS/NOAA

Topography by photogrammetric methods from aerial photographs
taken 1950. Field check 1954

Polyconic projection. 1927 North American datum



WILLIAMS PRODUCTION COMPANY ROSA UNIT #167
2315' F & 1410' FWL, SECTION 8, T31 R6W, NMPM
SAN JUAN COUNTY, NEW MEXICO
GROUND ELEVATION: 6334'



A-A'					
6344'					
6334'					
6324'					
B-B'					
6344'					
6334'					
6324'					
C-C'					
6344'					
6334'					
6324'					