

DISTRICT I  
PO Box 1980, Hobbs, NM 88240

DISTRICT II  
PO Box DD, Artesia, NM 88210

DISTRICT III  
1000 Rio Brazos Rd., Aztec, NM 87410

DISTRICT IV  
2040 South Pacheco, Santa Fe, NM 87505

ORIGINAL

OIL CONSERVATION DIVISION

P.O. Box 2088  
Santa Fe, NM 87504-2088

Form C-101  
Revised February 21, 1994

Instructions on back  
Submit to Appropriate District Office

State Lease - 6 Copies  
Fee Lease - 5 Copies

RECEIVED  
APR 16 1999  
OIL CONSERVATION DIVISION  
DISTRICT I

AMENDED REPORT

APPLICATION FOR PERMIT TO DRILL, RE-ENTER, DEEPEN, PLUGBACK, OR ADD A ZONE

1. OPERATOR NAME AND ADDRESS Cross Timbers Operating Company 3000 North Garfield, Suite 175 Midland, Texas 79705		2. GRID NUMBER
4. PROPERTY CODE 24507	5. PROPERTY NAME Brown	3. API NUMBER 30-045-29900
		6. WELL NUMBER 3

7. SURFACE LOCATION

U/I or lot no.	Section	Township	Range	Lot Idn	Feet from the	North/South line	Feet from the	East/West line	County
1	29	30N	12W		1775'	South	1090'	East	San Juan

8. PROPOSED BOTTOM HOLE LOCATION IF DIFFERENT FROM SURFACE

U/I or lot no.	Section	Township	Range	Lot Idn	Feet from the	North/South line	Feet from the	East/West line	County
9. Proposed Pool 1 Basin Fruitland Coal					10. Proposed Pool 2				

11. Work Type Code N	12/ Well Type Code G	13. Cable/Rotary Rotary	14. Lease Type Code Fee	15. Ground Level Elevation 5514'
16. Multiple NO	17. Proposed Depth 1700'	18. Formation Basin Fruitland Coal	19. Contractor	20. Spud Date Spring 1999

21. Proposed Casing and Cement Program

Hole Size	Casing Size	Casing weight/foot	Setting Depth	Sacks of Cement	Estimated TOC
8 3/4"	7"	23#, J-55, STC	200'	100	Surface
6 1/2"	4 1/2"	10.5#, J-55, STC	1700'	200	Surface

22. Describe the proposed program. If this application is to DEEPEN or PLUG BACK give the data on the present productive zone and proposed new productive zone. Describe the blowout prevention program, if any. Use additional sheets if necessary.

Casing/Cement Program to 200': 100 sacks Class B cement containing 2% CAC12, 1/4 PPS celloflake. Circulate to surface.

Casing/Cement Program to 1800': 100 sacks of 35/65/6 Poz cement containing 6%, 5 PPS, 1/4 Gilsonite, 1/4 PPS celloflake, followed by 100 sacks of Class G cement containing 5 PPS gilsonite, 1/4 PPS celloflake. Use 25% excess over volume calculated from open hole logs to bring TOC up to surface.

A rig equipped with a double BOP will be used.

23. I hereby certify that the information given above is true and complete to the best of my knowledge and belief.

Signature: *Loren W. Fothergill*

Printed Name: Loren W. Fothergill

Title: Operating Engineer

Date: 4/14/99

Phone: (505) 632-5200

OIL CONSERVATION DIVISION 4-10-99

APPROVED BY: *Steve Busch*

TITLE: DEPUTY OIL & GAS INSPECTOR, DIST. #1

Approval Date: APR 20 1999 Expiration Date: APR 20 2000

Conditions of Approval:

Attached:

District I  
PO Box 1980, Hobbs, NM 88241-1980

State of New Mexico  
Energy, Minerals & Natural Resources Department

Form C-102  
Revised February 21, 1994

District II  
PO Drawer DD, Artesia, NM 88211-0719

Submit to Appropriate District Office  
State Lease - 4 Copies  
Fee Lease - 3 Copies

District III  
1000 Rio Brazos Rd., Aztec, NM 87410

OIL CONSERVATION DIVISION  
PO Box 2088  
Santa Fe, NM 87504-2088

District IV  
PO Box 2088, Santa Fe, NM 87504-2088

AMENDED REPORT

WELL LOCATION AND ACREAGE DEDICATION PLAT

1 API Number 30-045-29900		2 Pool Code 71629		3 Pool Name BASIN FRUITLAND COAL	
4 Property Code 24507		5 Property Name BROWN		6 Well Number 3	
7 GRID No. 167067		8 Operator Name CROSS TIMBERS OPERATING COMPANY		9 Elevation 5514'	

10 Surface Location

UL or lot no.	Section	Township	Range	Lot Idn	Feet from the	North/South line	Feet from the	East/West line	County
I	29	30N	12W		1775	SOUTH	1090	EAST	SAN JUAN

11 Bottom Hole Location If Different From Surface

UL or lot no.	Section	Township	Range	Lot Idn	Feet from the	North/South line	Feet from the	East/West line	County

12 Dedicated Acres 320	13 Joint or In-fill	14 Consolidation Code	15 Order No.
---------------------------	---------------------	-----------------------	--------------

NO ALLOWABLE WILL BE ASSIGNED TO THIS COMPLETION UNTIL ALL INTERESTS HAVE BEEN CONSOLIDATED OR A NON-STANDARD UNIT HAS BEEN APPROVED BY THE DIVISION

16

29

17 OPERATOR CERTIFICATION

I hereby certify that the information contained herein is true and complete to the best of my knowledge and belief

4/16/99

Signature  
Loren W. Fothergill

Printed Name  
Production Engineer

Title  
Loren W Fothergill

Date

18 SURVEYOR CERTIFICATION

I hereby certify that the well location shown on this plat was plotted from field notes of actual surveys made by me or under my supervision, and that the same is true and correct to the best of my belief.

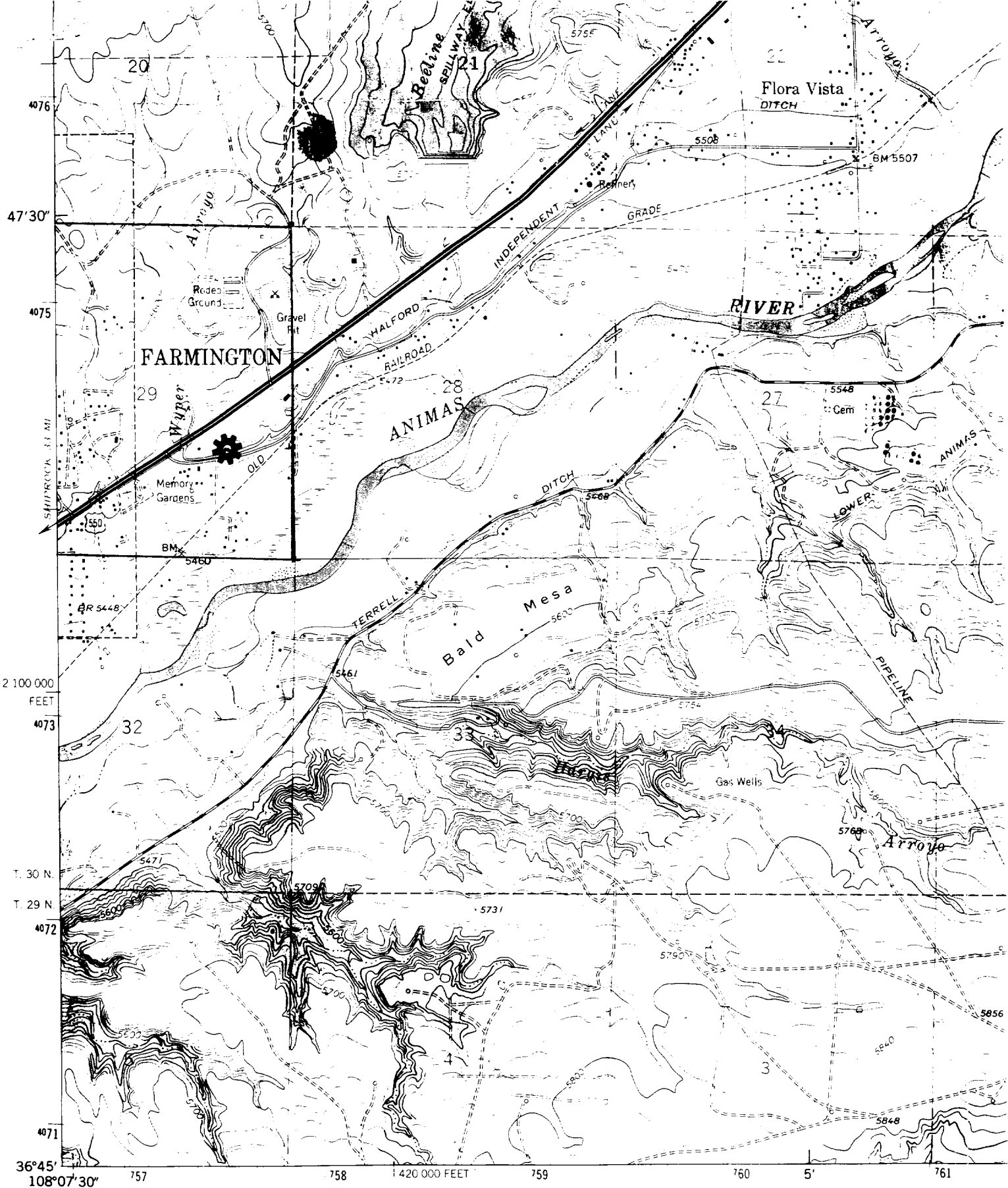
MARCH 25, 1999

Date of Survey

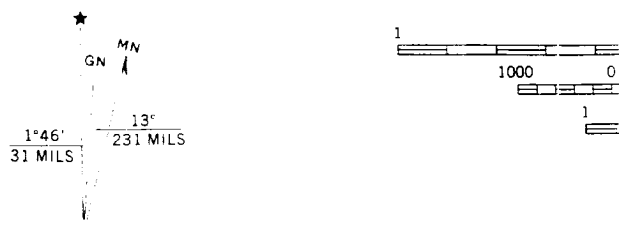
Signature and Seal of Professional Surveyor

Certificate Number 6857

 RECEIVED  
 APR 16 1999  
 OIL CON. DIV.  
 DIST. 3



Mapped, edited, and published by the Geological Survey  
 Control by USGS and NOS/NOAA  
 Topography by photogrammetric methods from aerial photographs  
 taken 1958 and 1962. Field checked 1963.  
 Polyconic projection. 1927 North American datum  
 10,000-foot grid base on New Mexico coordinate system, west zone  
 1000-meter Universal Transverse Mercator grid ticks  
 zone 12 shown in blue



TON SOUTH)  
 357 // NW

