

District I
1625 N. French Dr., Hobbs, NM 88240
District II
811 South First, Artesia, NM 88210
District III
1000 Rio Brazos Rd., Aztec, NM 87410
District IV
2040 South Pacheco, Santa Fe, NM 87505

State of New Mexico
Energy, Minerals and Natural Resources

OIL CONSERVATION DIVISION
2040 South Pacheco
Santa Fe, NM 87505

Submit to appropriate District Office
State Lease-4 Copies
Fee Lease-3 Copies

☐ AMENDED REPORT

WELL LOCATION AND ACREAGE DEDICATION PLAT

¹ API Number		² Pool Code 71629		³ Pool Name Basin Fruitland Coal	
⁴ Property Code		⁵ Property Name WF State 2			⁶ Well No. #1
⁷ OGRID No. 019219		⁸ Operator Name Richardson Operating Company			⁹ Elevation 5935'

¹⁰ Surface Location

UL or lot no.	Section	Township	Range	Lot Idn	Feet from the	North/South Line	Feet from the	East/West line	County
H	2	30N	14W		1750	North	790	East	San Juan

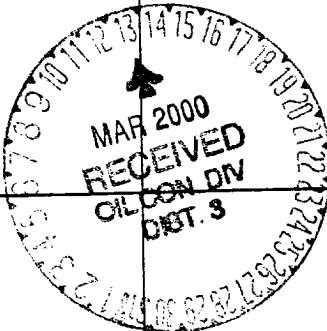
¹¹ Proposed Bottom Hole Location If Different From Surface

UL or lot no.	Section	Township	Range	Lot Idn	Feet from the	North/South Line	Feet from the	East/West line	County

¹² Dedicated Acres	¹³ Joint or Infill	¹⁴ Consolidation Code	¹⁵ Order No.

NO ALLOWABLE WILL BE ASSIGNED TO THIS COMPLETION UNTIL ALL INTERESTS HAVE BEEN CONSOLIDATED OR
NON-STANDARD UNIT HAS BEEN APPROVED BY THE DIVISION

¹⁶ VA 1916		E 1545		B 11124-44		¹⁷ OPERATOR CERTIFICATION I hereby certify that the information contained herein is true and complete to the best of my knowledge and belief. <i>Cathleen Colby</i> Signature Cathleen Colby Printed Name Land Manager Title 2/22/00 Date
E 3149-1	B 11124-37	VA 1916	E 3149-1			
						¹⁸ SURVEYOR CERTIFICATION I hereby certify that the well location shown on this plat was plotted from field notes of actual surveys made by me or under my supervision, and that the same is true and correct to the best of my belief. Date of Survey Signature and Seal of Professional Surveyer: Certificate Number



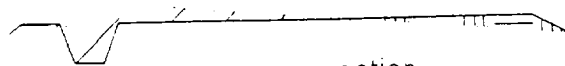
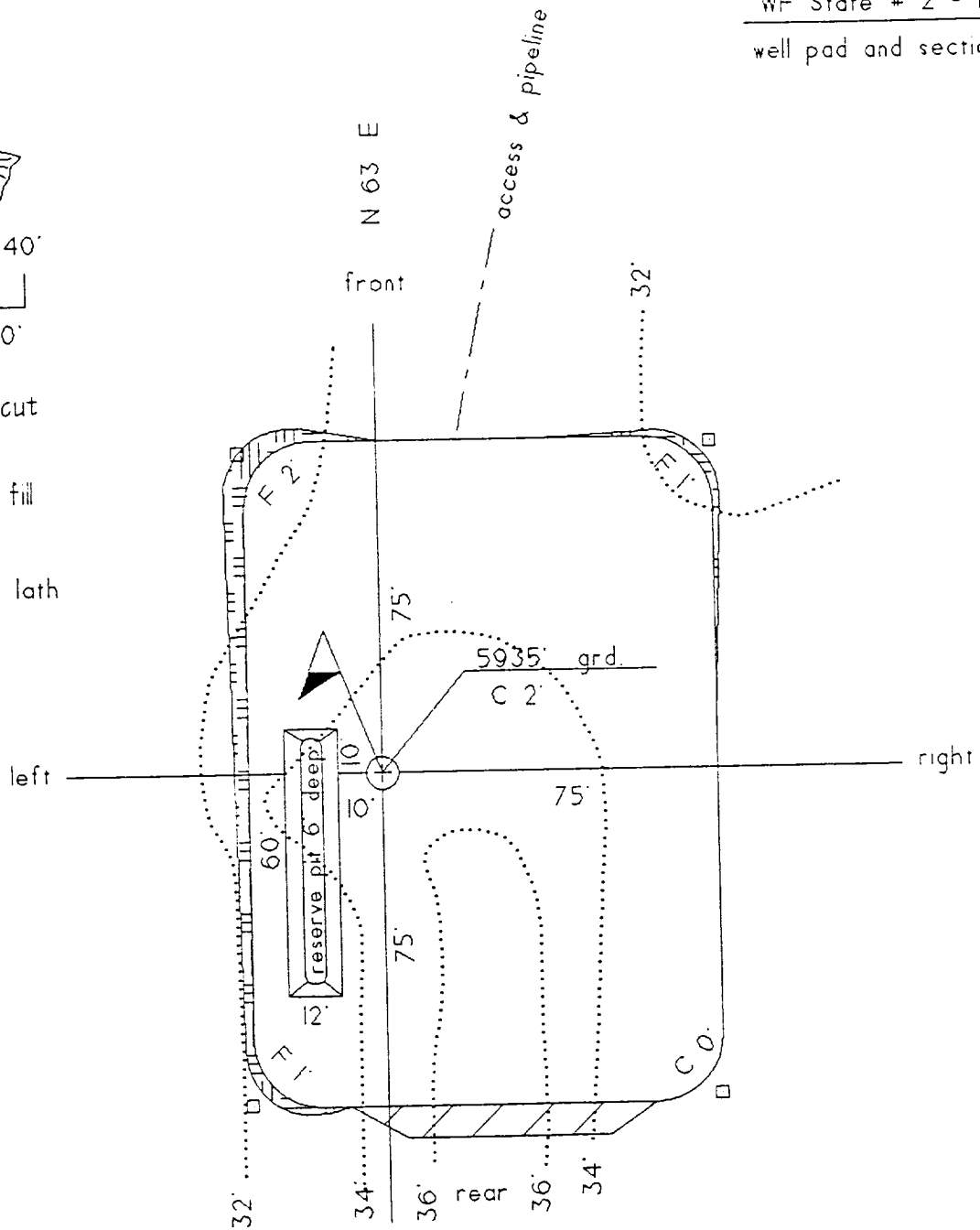
WF State # 2 - 1
well pad and section



Scale 1" = 40'

cut

- set stake & lath



section