

UNITED STATES
DEPARTMENT OF THE INTERIOR
BUREAU OF LAND MANAGEMENT

APPLICATION FOR PERMIT TO DRILL, DEEPEN, OR PLUG BACK

1a. Type of Work DRILL	5. Lease Number SF-078510 Unit Reporting Number
1b. Type of Well GAS	6. If Indian, All. or Tribe
2. Operator BURLINGTON RESOURCES Oil & Gas Company	7. Unit Agreement Name
3. Address & Phone No. of Operator PO Box 4289, Farmington, NM 87499 (505) 326-9700	8. Farm or Lease Name Quinn 9. Well Number 5B
4. Location of Well 1800' FSL, 1150' FWL Latitude 36° 54.6, Longitude 107° 43.1	10. Field, Pool, Wildcat Blanco Mesaverde 11. Sec., Twn, Rge, Mer. (NMPM) K Sec. 7, T-31-N, R-8-W API # 30-045-30055
14. Distance in Miles from Nearest Town 10 miles from Navajo Dam	12. County San Juan
15. Distance from Proposed Location to Nearest Property or Lease Line 1150'	13. State NM
16. Acres in Lease	17. Acres Assigned to Well 330.16
18. Distance from Proposed Location to Nearest Well, Drlg, Compl, or Applied for on this Lease 1000'	
19. Proposed Depth 5683'	20. Rotary or Cable Tools Rotary
21. Elevations (DF, FT, GR, Etc.) 6111'	22. Approx. Date Work will Start
23. Proposed Casing and Cementing Program See Operations Plan attached	DRILLING OPERATIONS AUTHORIZED ARE SUBJECT TO COMPLIANCE WITH ATTACHED "GENERAL REQUIREMENTS"
24. Authorized by: <u><i>Regan Cole</i></u> Regulatory/Compliance Administrator	<u>11-8-99</u> Date

PERMIT NO. _____ APPROVAL DATE FEB - 8 2000
APPROVED BY /s/ Charlie Beecham TITLE _____ DATE _____

Archaeological Report to be submitted

Threatened and Endangered Species Report to be submitted

NOTE: This format is issued in lieu of U.S. BLM Form 3160-3

Title 18 U.S.C. Section 1001, makes it a crime for any person knowingly and willfully to make to any department or agency of the United States any false, fictitious or fraudulent statements or presentations as to any matter within its jurisdiction.

NMOC

DISTRICT I
P.O. Box 1980, Hobbs, N.M. 88241-1980

DISTRICT II
P.O. Drawer DD, Artesia, N.M. 88211-0719

DISTRICT III
1000 Rio Brazos Rd., Aztec, N.M. 87410

DISTRICT IV
P.O. Box 2088, Santa Fe, NM 87504-2088

State of New Mexico
Energy, Minerals & Natural Resources Department

Form C-102
Revised February 21, 1994
Instructions on back
Submit to Appropriate District Office
State Lease - 4 Copies
Fee Lease - 3 Copies

OIL CONSERVATION DIVISION

P.O. Box 2088
Santa Fe, NM 87504-2088

RECEIVED
PLM

NOV 15 PM 1:29

☐ AMENDED REPORT

WELL LOCATION AND ACREAGE DEDICATION PLAT

¹ API Number 30-045-30055	² Pool Code 72319	³ Pool Name Blanco Mesaverde
⁴ Property Code 7407	⁵ Property Name QUINN	⁶ Well Number 5B
⁷ OGRID No. 14538	⁸ Operator Name BURLINGTON RESOURCES OIL & GAS COMPANY	⁹ Elevation 6111'

¹⁰ Surface Location

UL or lot no.	Section	Township	Range	Lot Idn	Feet from the	North/South line	Feet from the	East/West line	County
K	7	31-N	8-W		1800	SOUTH	1150	WEST	SAN JUAN

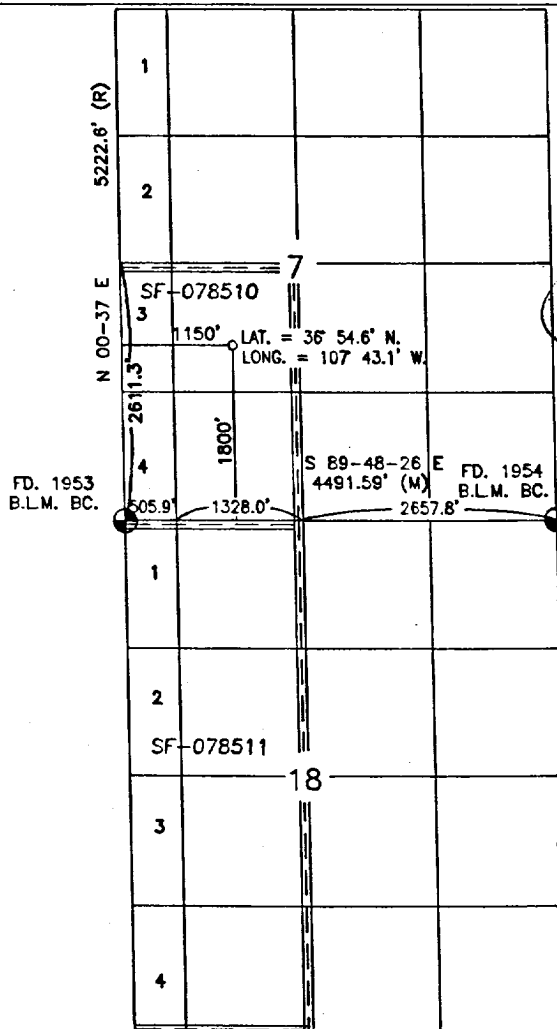
¹¹ Bottom Hole Location If Different From Surface

UL or lot no.	Section	Township	Range	Lot Idn	Feet from the	North/South line	Feet from the	East/West line	County

¹² Dedicated Acres 330.16	¹³ Joint or Infill	¹⁴ Consolidation Code	¹⁵ Order No.
---	-------------------------------	----------------------------------	-------------------------

NO ALLOWABLE WILL BE ASSIGNED TO THIS COMPLETION UNTIL ALL INTERESTS HAVE BEEN CONSOLIDATED
OR A NON-STANDARD UNIT HAS BEEN APPROVED BY THE DIVISION

16



17 OPERATOR CERTIFICATION

I hereby certify that the information contained herein is true and complete to the best of my knowledge and belief

Peggy Cole
Signature

Peggy Cole
Printed Name

Regulatory Administrator
Title

11-8-99
Date

18 SURVEYOR CERTIFICATION

I hereby certify that the well location shown on this plat was plotted from field notes of actual surveys made by me or under my supervision, and that the same is true and correct to the best of my belief.

9-22-80
Date of Survey
Signature and Seal of Professional Surveyor



Certificate Number

OPERATIONS PLAN

Well Name: Quinn #5B
Surface Location: 1800' FSL, 1150' FWL, Section 7, T-31-N, R-8-W
San Juan County, New Mexico
Latitude 36° 54.6, Longitude 107° 43.1
Formation: Blanco Mesa Verde
Elevation: 6111' GL

<u>Formation</u> <u>Tops:</u>	<u>Top</u>	<u>Bottom</u>	<u>Contents</u>
Surface	San Jose	1699'	aquifer
Ojo Alamo	1699'	1763'	aquifer
Kirtland	1763'	2448'	gas
Fruitland	2448'	2889'	gas
Pictured Cliffs	2889'	3113'	gas
Lewis	3113'	3743'	gas
Intermediate TD	3213'		
Mesa Verde	3743'	4138'	gas
Chacra	4138'	4933'	gas
Massive Cliff House	4933'	4993'	gas
Menefee	4993'	5283'	gas
Point Lookout	5283'		gas
Total Depth	5683'		

Logging Program:

Cased hole Gamma Ray, Cement bond - surface to TD
Mud Logs/Coring/DST - none

Mud Program:

<u>Interval- MD</u>	<u>Type</u>	<u>Weight</u>	<u>Vis.</u>	<u>Fluid Loss</u>
0- 200'	Spud	8.4-9.0	40-50	no control
200- 3213'	LSND	8.4-9.0	30-60	no control
3113- 5683'	Air/Mist	n/a	n/a	n/a

Pit levels will be visually monitored to detect gain or loss of fluid control.

Casing Program (as listed, the equivalent, or better):

<u>Hole Size</u>	<u>Measured Depth</u>	<u>Csg Size</u>	<u>Weight</u>	<u>Grade</u>
12 1/4"	0' - 200'	9 5/8"	32.3#	H-40
8 3/4"	0' - 3213'	7"	20.0#	J-55
6 1/4"	3113' - 5683'	4 1/2"	10.5#	J-55

Tubing Program: 0' - 5683' 2 3/8" 4.7# J-55

BOP Specifications, Wellhead and Tests:

Surface to Intermediate TD -

11" 2000 psi minimum double gate BOP stack (Reference Figure #1).
After nipple-up prior to drilling out surface casing, rams and casing will be tested to 600 psi for 30 minutes.

BURLINGTON RESOURCES OIL & GAS COMPANY

QUINN No. 5B

SW/4 SECTION 7, T-31-N, R-8-W, N.M.P.M.
SAN JUAN COUNTY, NEW MEXICO
1800' FSL 1150' FWL

APD MAP #1

200' NEW FEE CONSTRUCTION
200' NE/SW SECTION 7, T31N, R8W

NEW ACCESS

CANYON

WELL FLAG

Pockets

BURLINGTON RESOURCES OIL & GAS COMPANY

QUINN No. 5B

SW/4 SECTION 7, T-31-N, R-8-W, N.M.P.M.
SAN JUAN COUNTY, NEW MEXICO
1800' FSL 1150' FWL

APD MAP #1

200' NEW FEE CONSTRUCTION
200' NE/SW SECTION 7, T31N, R8W

NEW ACCESS

CANYON

WELL FLAG

Pockets

BURLINGTON RESOURCES OIL & GAS COMPANY

QUINN No. 5B

SW/4 SECTION 7, T-31-N, R-8-W, N.M.P.M.
SAN JUAN COUNTY, NEW MEXICO
1800' FSL 1150' FWL

APD MAP #1

200' NEW FEE CONSTRUCTION
200' NE/SW SECTION 7, T31N, R8W

NEW ACCESS

CANYON

WELL FLAG

Pockets

BURLINGTON RESOURCES OIL & GAS COMPANY

QUINN No. 5B

SW/4 SECTION 7, T-31-N, R-8-W, N.M.P.M.
SAN JUAN COUNTY, NEW MEXICO
1800' FSL 1150' FWL

APD MAP #1

200' NEW FEE CONSTRUCTION
200' NE/SW SECTION 7, T31N, R8W

NEW ACCESS

CANYON

WELL FLAG

Pockets

BURLINGTON RESOURCES OIL & GAS COMPANY

QUINN No. 5B

SW/4 SECTION 7, T-31-N, R-8-W, N.M.P.M.
SAN JUAN COUNTY, NEW MEXICO
1800' FSL 1150' FWL

APD MAP #1

200' NEW FEE CONSTRUCTION
200' NE/SW SECTION 7, T31N, R8W

NEW ACCESS

CANYON

WELL FLAG

Pockets

BURLINGTON RESOURCES OIL & GAS COMPANY

QUINN No. 5B

SW/4 SECTION 7, T-31-N, R-8-W, N.M.P.M.
SAN JUAN COUNTY, NEW MEXICO
1800' FSL 1150' FWL

APD MAP #1

200' NEW FEE CONSTRUCTION
200' NE/SW SECTION 7, T31N, R8W

NEW ACCESS

CANYON

WELL FLAG

Pockets

BURLINGTON RESOURCES OIL & GAS COMPANY

QUINN No. 5B

SW/4 SECTION 7, T-31-N, R-8-W, N.M.P.M.
SAN JUAN COUNTY, NEW MEXICO
1800' FSL 1150' FWL

APD MAP #1

200' NEW FEE CONSTRUCTION
200' NE/SW SECTION 7, T31N, R8W

NEW ACCESS

CANYON

WELL FLAG

Pockets

