

UNITED STATES
DEPARTMENT OF THE INTERIOR

Form approved.
Budget Bureau No. 1004-0136
Expires: December 31, 1991

BUREAU OF LAND MANAGEMENT

APPLICATION FOR PERMIT TO DRILL OR DEEPEN **9-50**

5. LEASE DESIGNATION AND SERIAL NO.
SF 076337

6. IF INDIAN, ALLOTTEE OR TRIBE NAME

7. UNIT AGREEMENT NAME

8. FARM OR LEASE NAME, WELL NO.
Heath Gas Com A 1B

9. API WELL NO.
30-045-30111

10. FIELD AND POOL, OR WILDCAT
BLANCO MESAVERDE

11. SEC., T., R., M. OR BLK. AND SURVEY OR AREA
Section 32
Township 30N Range 9W

12. COUNTY OR PARISH
San Juan

13. STATE
New Mexico

17. NO. OF ACRES ASSIGNED TO THIS WELL
E/ 320

30. ROTARY OR CABLE TOOLS

22. APPROX. DATE WORK WILL START*
02-15-2000

1a. TYPE OF WORK
b. TYPE OF WELL
OIL WELL DRILL GAS WELL DEEPEN Other

2. NAME OF OPERATOR
AMOCO PRODUCTION COMPANY
Attention: Mary Corley

3. ADDRESS AND TELEPHONE NO.
P.O. BOX 3092 HOUSTON, TX 77253
281-366-4491

4. LOCATION OF WELL (Report location clearly and in accordance with any State requirements.)*
At surface 2300' FNL 1530' FEL
At proposed prod. zone

14. DISTANCE IN MILES AND DIRECTION FROM NEAREST TOWN OR POST OFFICE*
14 Miles from Bloomfield, NM

15. DISTANCE FROM PROPOSED* LOCATION TO NEAREST PROPERTY OR LEASE LINE, FT. (Also to nearest drilg. unit line, if any)

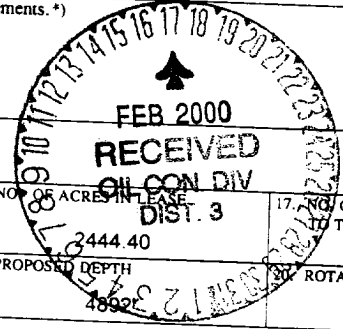
16. NO. OF ACRES IN LEASE
3444.40

17. NO. OF ACRES ASSIGNED TO THIS WELL
E/ 320

18. DISTANCE FROM PROPOSED LOCATION* TO NEAREST WELL, DRILLING, COMPLETED, OR APPLIED FOR, ON THIS LEASE, FT.

19. PROPOSED DEPTH
4892'

21. ELEVATIONS (Show whether DF, RT, GR., etc.)
5771' GR
Procedural review pursuant to 43 CFR 3165.3 and appeal pursuant to 43 CFR 3165.4.



PROPOSED CASING AND CEMENTING PROGRAM

SIZE OF HOLE	GRADE OF CASING	WEIGHT PER FOOT	SETTING DEPTH	QUANTITY OF CEMENT	DENSITY (lb/gal)	YIELD (ft ³ /sk)	WATER (gal/sk)	EXCESS %
12 1/4"	H 40 9 5/8"	32.3#	135'	125 SXS (149 CU.FT.) CLS B CIRC TO SURFACE	15.6	1.19	5.2	100%
8 3/4"	J-55 7"	20#	2087'	159 SXS (458 CU.FT.) CLS B - LEAD 134 SXS (159 CU.FT.) CLS B - TAIL	11.4 15.6	2.88 1.19	16.62 5.25	100%
6 1/4"	J-55 4 1/2"	10.5#	4892'	185 SXS (387 CU.FT.) CemPlus Blend (LiteCrete)	10	2.09	6.68	70%

NOTICE OF STAKING SUBMITTED 10/26/1999

OBJECTIVE: Drill 100' into the Mancos shale, set 4 1/2" Liner across MV, perf & stimulate Cliff House, Menefee, & Point Lookout.

METHOD OF DRILLING: Rotary/Top Drive
LOG PROGRAM TYPE: Cased Hole (GR-CCL-TDT)
MUD PROGRAM: INTERVAL
0' - 135' (3 JTS)
135' - 2087'
2087' - TD

DEPTH OF DRILLING: 0' - TD
DEPTH INTERVAL: TDT - PBDT to Top of Liner GR & CCL - PBDT to 0'

TYPE MUD: Spud
Water/LSND
Gas/Air/Mist

WEIGHT, #/GAL: 8.6 - 9.2
8.6 - 9.2
Volume sufficient to maintain a stable and clean wellbore

(1) Circulate Cement to Surface (2) Set Casing 50' above Fruitland Coal
(3) Liner Lap should be a minimum of 100'

COMPLETION: Rigless, 2 -3 Stage Limited Entry Hydraulic Frac

IN ABOVE SPACE DESCRIBE PROPOSED PROGRAM: If proposal is to deepen, give data on present productive zone and proposed new productive zone. If proposal is to drill or deepen directionally, give pertinent data on subsurface locations and measured and true vertical depths. Give blowout preventer program, if any.

24.

SIGNED Mary Corley TITLE SR BUSINESS ANALYST DATE 01-13-2000
(This space for Federal or State office use)

PERMIT NO. _____ APPROVAL DATE _____
Application approval does not warrant or certify that the applicant holds legal or equitable title to those rights in the subject lease which would entitle the applicant to conduct operations thereon.

CONDITIONS OF APPROVAL, IF ANY:

APPROVED BY /s/ Charlie Beecham TITLE NMOCD DATE FEB 14 2000
chbe

*See Instructions On Reverse Side
Title 18 U.S.C. Section 1001, makes it a crime for any person knowingly and willfully to make to any department or agency of the United States any false, fictitious or fraudulent statements or representations as to any matter within its jurisdiction.

District I
 PO Box 1980, Hobbs NM 88241-1980
 District II
 PO Drawer KK, Artesia, NM 87211-0719
 District III
 1000 Rio Brazos Rd., Aztec, NM 87410
 District IV
 PO Box 2088, Santa Fe, NM 87504-2088

State of New Mexico
 Energy, Minerals & Natural Resources Department

OIL CONSERVATION DIVISION
 PO Box 2088
 Santa Fe, NM 87504-2088

Form C-102
 Revised February 21, 1994
 Instructions on back
 Submit to Appropriate District Office
 State Lease - 4 Copies
 Fee Lease - 3 Copies

AMENDED REPORT

WELL LOCATION AND ACREAGE DEDICATION PLAT

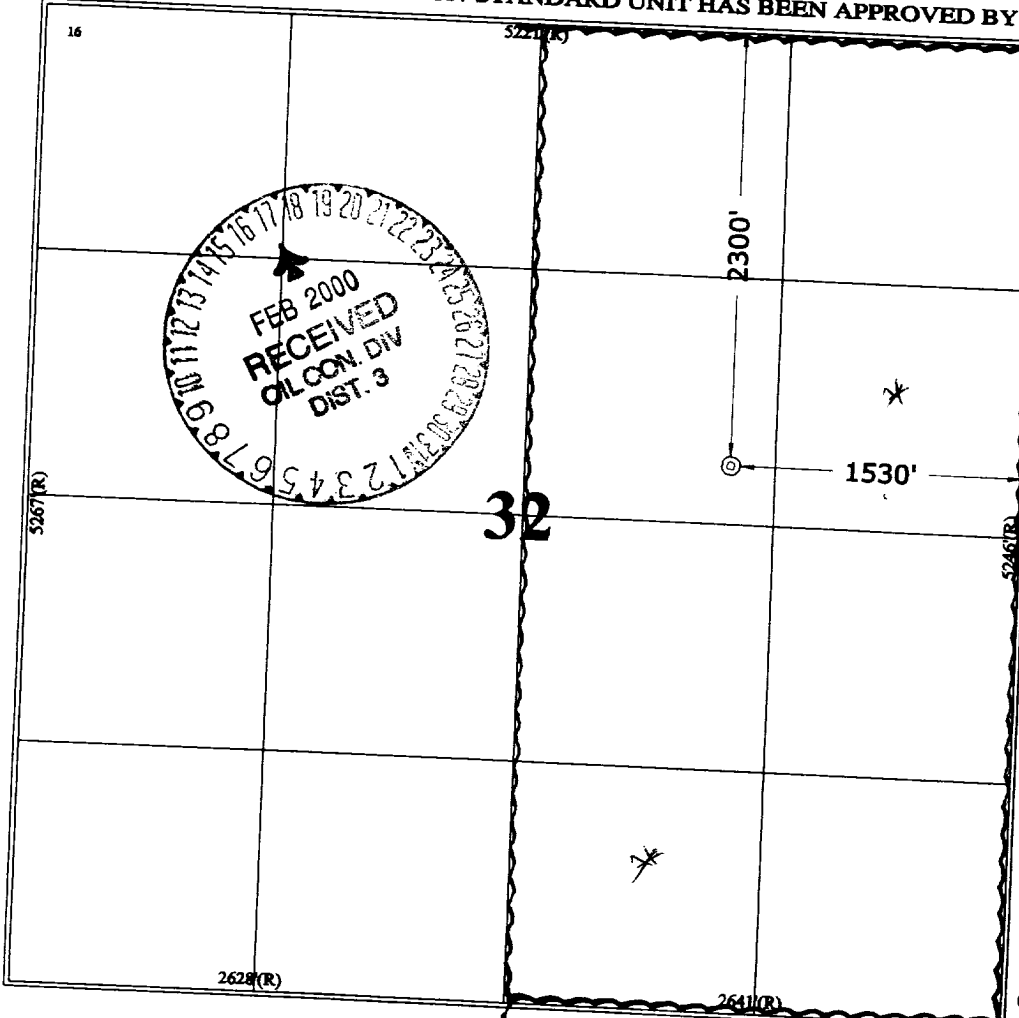
¹ API Number 30-045-30111		² Pool Code 72319		³ Pool Name Blanco Mesalverde			
⁴ Property Code 000650		⁵ Property Name HEATH GAS COM A				⁶ Well Number # 1B	
⁷ OGRID No. 000778		⁸ Operator Name AMOCO PRODUCTION COMPANY				⁹ Elevation 5771	

¹⁰ Surface Location									
UL or Lot No.	Section	Township	Range	Lot Idn	Feet from the	North/South line	Feet from the	East/West line	County
G	32	30 N	9 W		2300	NORTH	1530	EAST	SAN JUAN

¹¹ Bottom Hole Location If Different From Surface									
⁷ UL or lot no.	Section	Township	Range	Lot Idn	Feet from the	North/South line	Feet from the	East/West line	County

¹² Dedicated Acres: 320
¹³ Joint or Infill:
¹⁴ Consolidation Code:
¹⁵ Order No.:

NO ALLOWABLE WILL BE ASSIGNED TO THIS COMPLETION UNTIL ALL INTERESTS HAVE BEEN CONSOLIDATED OR A NON-STANDARD UNIT HAS BEEN APPROVED BY THE DIVISION

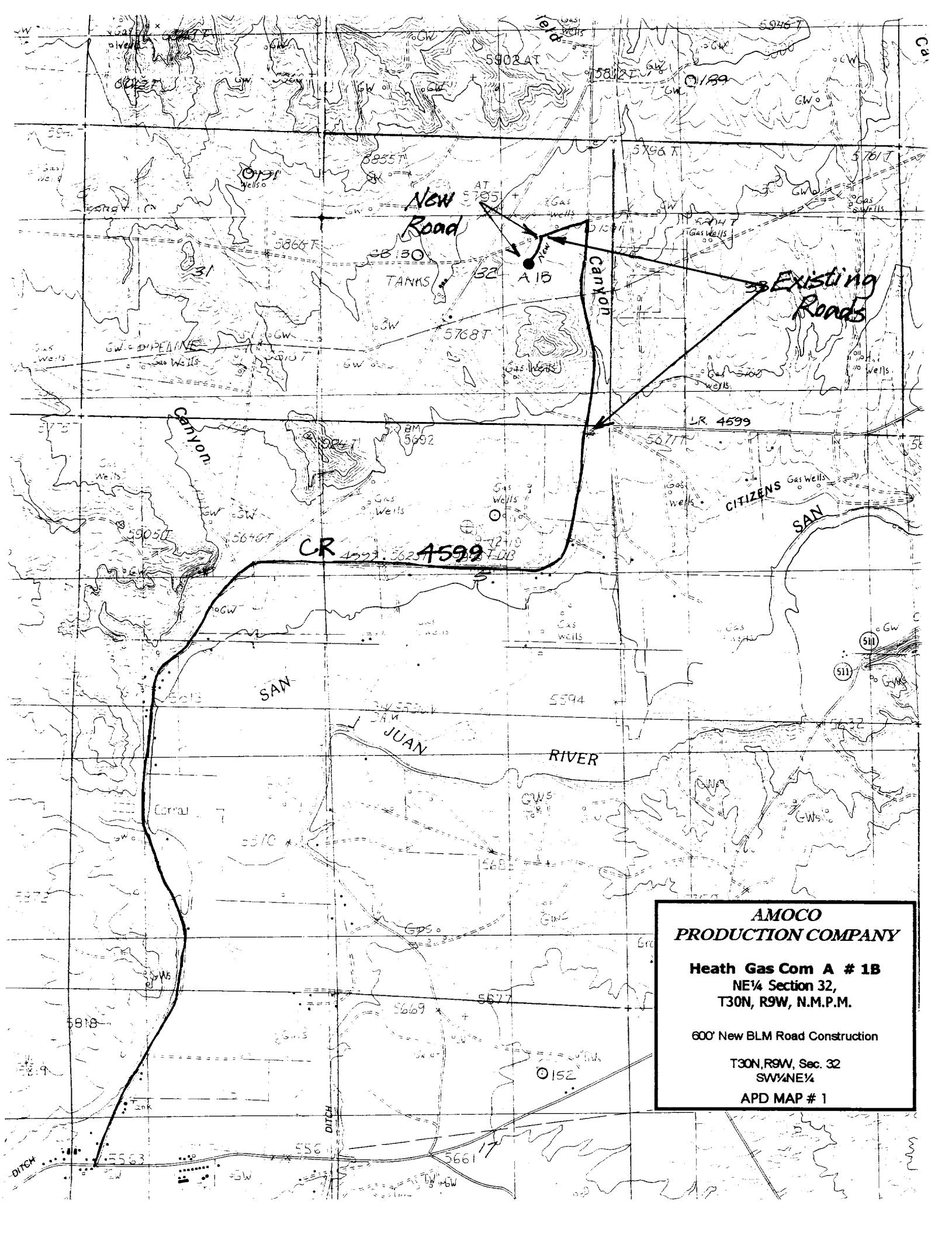


¹⁷ OPERATOR CERTIFICATION
 I hereby certify that the information contained herein is true and complete to the best of my knowledge and belief.

Signature: *Mary Corley*
 Printed Name: Mary Corley
 Title: Sr. Business Analyst
 Date: 01/13/2000

¹⁸ SURVEYOR CERTIFICATION
 I hereby certify that the well location shown on this plat was plotted from field notes of actual surveys made by me or under my supervision, and that the same is true and correct to the best of my belief.

Date of Survey: November 11, 1999
 Signature and Seal of Professional Surveyor: *[Signature]*
 Seal: GAYNAN NEW MEXICO REGISTERED PROFESSIONAL LAND SURVEYOR 7016
 Certificate Number: 7016



New Road

Existing Roads

CR 4599 A 1B

A 1B

CANYON

CANYON

CITIZENS SAN

JUAN

RIVER

**AMOCO
PRODUCTION COMPANY**

Heath Gas Com A # 1B
NE 1/4 Section 32,
T30N, R9W, N.M.P.M.

600' New BLM Road Construction

T30N, R9W, Sec. 32
SW 1/4 NE 1/4

APD MAP # 1