

UNITED STATES
DEPARTMENT OF THE INTERIOR
BUREAU OF LAND MANAGEMENT

APPLICATION FOR PERMIT TO DRILL, DEEPEN, OR PLUG BACK

1a. Type of Work DRILL	5. Lease Number SF-078511 Unit Reporting Number
1b. Type of Well GAS	6. If Indian, All. or Tribe
2. Operator BURLINGTON RESOURCES Oil & Gas Company	7. Unit Agreement Name
3. Address & Phone No. of Operator PO Box 4289, Farmington, NM 87499 (505) 326-9700	8. Farm or Lease Name Quinn 9. Well Number #2B
4. Location of Well 310' FSL, 1055' FWL Latitude 36° 52.6, Longitude 107° 43.2	10. Field, Pool, Wildcat Blanco Mesaverde 11. Sec., Twn, Rge, Mer. (NMPM) N Sec. 19, T-31-N, R-8-W API # 30-045-
14. Distance in Miles from Nearest Town 5 mi from Navajo Dam P.O.	12. County San Juan 13. State NM
15. Distance from Proposed Location to Nearest Property or Lease Line 310'	
16. Acres in Lease This action is subject to technical and procedural review pursuant to 43 CFR 3165.3 and appeal pursuant to 43 CFR 3165.4.	17. Acres Assigned to Well 326.56
18. Distance from Proposed Location to Nearest Well, Drlg, Compl, or Applied for on this Lease 1500'	
19. Proposed Depth 5900'	20. Rotary or Cable Tools Rotary
21. Elevations (DF, FT, GR, Etc.) 6393' GL	22. Approx. Date Work will Start DRILLING OPERATIONS AUTHORIZED ARE SUBJECT TO COMPLIANCE WITH ATTACHED "GENERAL REQUIREMENTS"
23. Proposed Casing and Cementing Program See Operations Plan attached	
24. Authorized by: <u><i>Deanna Cole</i></u> Regulatory/Compliance Administrator	<u>1-28-00</u> Date

PERMIT NO. _____ APPROVAL DATE _____
APPROVED BY /s/ Jim Lovato TITLE _____ DATE 11 12 2000

Archaeological Report to be submitted

Threatened and Endangered Species Report to be submitted

NOTE: This format is issued in lieu of U.S. BLM Form 3160-3

Title 18 U.S.C. Section 1001, makes it a crime for any person knowingly and willfully to make to any department or agency of the United States any false, fictitious or fraudulent statements or presentations as to any matter within its jurisdiction.

NMOCD

District I
PO Box 1980, Hobbs, NM 88241-1980

State of New Mexico
Energy, Minerals & Natural Resources Department

Form C-
Revised February 21, 1999

District II
PO Drawer 00, Artesia, NM 88211-0719

Instructions on back
Submit to Appropriate District Office
State Lease - 4 Copies
Fee Lease - 3 Copies

District III
1000 Rio Brazos Rd., Aztec, NM 87410

OIL CONSERVATION DIVISION
PO Box 2088
Santa Fe, NM 87504-2088

District IV
PO Box 2088, Santa Fe, NM 87504-2088

☐ AMENDED REPORT

WELL LOCATION AND ACREAGE DEDICATION PLAT

API Number 30-045-30151		Pool Code 72319	Pool Name Blanco Mesaverde
Property Code 7407	Property Name GUINN		Well Number 28
GRID No. 14538	Operator Name BURLINGTON RESOURCES OIL & GAS COMPANY		Elevation 6393'

10 Surface Location

UL or lot no.	Section	Township	Range	Lot Idn	Feet from the	North/South line	Feet from the	East/West line	County
N	19	31N	8W		310	SOUTH	1055	WEST	SAN JU

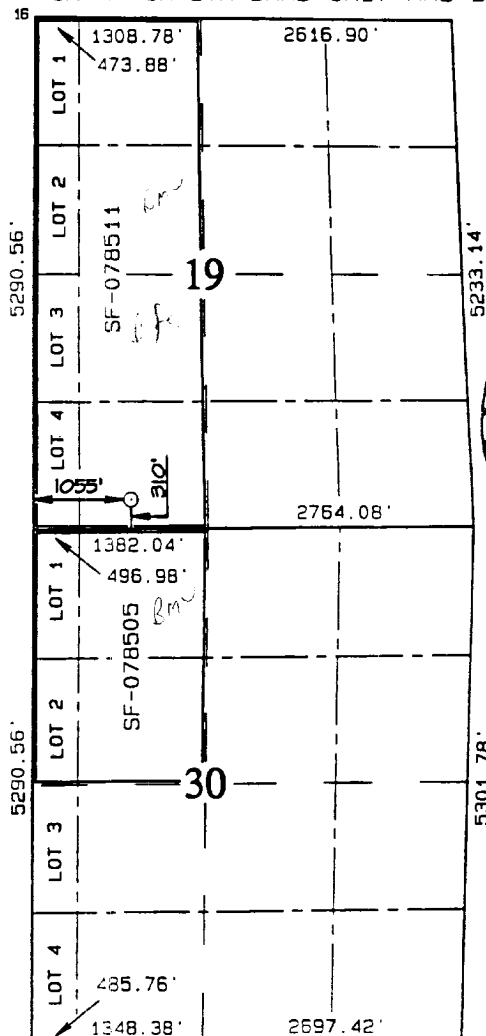
11 Bottom Hole Location If Different From Surface

UL or lot no.	Section	Township	Range	Lot Idn	Feet from the	North/South line	Feet from the	East/West line	County

12 Dedicated Acres 326.56 W	13 Joint or Infill	14 Consolidation Code	15 Order No.
--------------------------------	--------------------	-----------------------	--------------

NO ALLOWABLE WILL BE ASSIGNED TO THIS COMPLETION UNTIL ALL INTERESTS HAVE BEEN CONSOLIDATED OR A NON-STANDARD UNIT HAS BEEN APPROVED BY THE DIVISION

NPV:
R-392
11-19-53



17 OPERATOR CERTIFICATION

I hereby certify that the information contained herein is true and complete to the best of my knowledge and belief.

Signature: Peggy Cole
Printed Name: Peggy Cole
Regulatory Administrator
Title: 1-28-00
Date: 1-28-00

18 SURVEYOR CERTIFICATION

I hereby certify that the well location shown on this plat was plotted from field notes of actual surveys made or under my supervision, and that the same is true and correct to the best of my belief.

DECEMBER 23, 1999

Date of Survey: DEC 23 1999
Signature and Seal of Professional Surveyor: NEALE C. EDWARDS
Certificate Number: 685

OPERATIONS PLAN

Well Name: Quinn #2B
Surface Location: 310' FSL, 1055' FWL, Section 19, T-31-N, R-8-W
San Juan County, New Mexico
Latitude 36° 52.6, Longitude 107° 43.2
Formation: Blanco Mesa Verde
Elevation: 6393' GL

<u>Formation Tops:</u>	<u>Top</u>	<u>Bottom</u>	<u>Contents</u>
Surface	San Jose	2025'	aquifer
Ojo Alamo	2025'	2085'	aquifer
Kirtland	2085'	2728'	gas
Fruitland	2728'	3244'	gas
Pictured Cliffs	3244'	3389'	gas
Lewis	3389'	3990'	gas
Intermediate TD	3489'		
Mesa Verde	3990'	4358'	gas
Chacra	4358'	5129'	gas
Massive Cliff House	5129'	5180'	gas
Menefee	5180'	5500'	gas
Point Lookout	5500'		gas
Total Depth	5900'		

Logging Program:

Cased hole Gamma Ray, Cement bond - surface to TD
Mud Logs/Coring/DST - none

Mud Program:

<u>Interval- MD</u>	<u>Type</u>	<u>Weight</u>	<u>Vis.</u>	<u>Fluid Loss</u>
0- 200'	Spud	8.4-9.0	40-50	no control
200- 3489'	LSND	8.4-9.0	30-60	no control
3489- 5900'	Air/Mist	n/a	n/a	n/a

Pit levels will be visually monitored to detect gain or loss of fluid control.

Casing Program (as listed, the equivalent, or better):

<u>Hole Size</u>	<u>Measured Depth</u>	<u>Csg Size</u>	<u>Weight</u>	<u>Grade</u>
12 1/4"	0' - 200'	9 5/8"	32.3#	H-40
8 3/4"	0' - 3489'	7"	20.0#	J-55
6 1/4"	3389' - 5900'	4 1/2"	10.5#	J-55

Tubing Program: 0' - 5900' 2 3/8" 4.7# J-55

BOP Specifications, Wellhead and Tests:

Surface to Intermediate TD -

11" 2000 psi minimum double gate BOP stack (Reference Figure #1).
After nipple-up prior to drilling out surface casing, rams and casing will be tested to 600 psi for 30 minutes.

BOP Specifications, Wellhead and Tests (cont'd):**Intermediate TD to Total Depth -**

11" 2000 psi minimum double gate BOP stack (Reference Figure #1).
After nipple-up prior to drilling out intermediate casing, rams
and casing will be tested to 1500 psi for 30 minutes.

Surface to Total Depth -

2" nominal, 2000 psi minimum choke manifold (Reference Figure #3).

Completion Operations -

7 1/16" 2000 psi double gate BOP stack (Reference Figure #2).
After nipple-up prior to completion, pipe rams, casing and liner
top will be tested to 2000 psi for 15 minutes.

Wellhead -

9 5/8" x 7" x 2 3/8" x 2000 psi tree assembly.

General -

- Pipe rams will be actuated once each day and blind rams will be actuated once each trip to test proper functioning.
- An upper kelly cock valve with handle available and drill string valves to fit each drill string will be available on the rig floors at all times.
- BOP pit level drill will be conducted weekly for each drill crew.
- All BOP tests & drills will be recorded in daily drilling reports.
- Blind and pipe rams will be equipped with extension hand wheels.

Cementing:

9 5/8" surface casing - cement with 159 sx Class "B" cement with 1/4# flocele/sx and 3% calcium chloride (188 cu.ft. of slurry, 200% excess to circulate to surface). WOC 8 hrs. Test casing to 600 psi for 30 minutes.

Saw tooth guide shoe on bottom. Bowspring centralizers will be run in accordance with Onshore Order #2.

7" intermediate casing -

Lead w/192 sx Class "B" w/3% sodium metasilicate, 7# gilsonite/sx and 0.5# flocele/sx. Tail w/90 sx 50/50 Class "B" Poz w/2% gel, 2% calcium chloride, 7# gilsonite/sx and 0.5# flocele/sx (1050 cu.ft. of slurry, 100% excess to circulate to surface.) WOC minimum of 8 hours before drilling out intermediate casing. If cement does not circulate to surface, a CBL will be run to determine TOC. Test casing to 1500 psi for 30 minutes.

Cement nose guide shoe on bottom with float collar spaced on top of shoe joint. Bowspring centralizers spaced every other joint off bottom, to the base of the Ojo Alamo at 2085'. Two turbolating centralizers at the base of the Ojo Alamo at 2085'. Bowspring centralizers spaced every fourth joint from the base of the Ojo Alamo to the base of the surface casing.

4 1/2" Production Liner -

Cement to circulate liner top. Pump 284 sx 50/50 Class "B" Poz w/1/4# flocele/sx, 2% gel, 0.1% retardant, 5# gilsonite/sx and 0.4% fluid loss additive (361 cu.ft., 40% excess to circulate liner top). WOC a minimum of 18 hrs prior to completing.

Cement nose guide shoe on bottom with float collar spaced on top of shoe joint. The liner hanger will have a rubber packoff.

- If hole conditions permit, an adequate water spacer will be pumped ahead of each cement job to prevent cement/ mud contamination or cement hydration.

Special Drilling Operations (Air/Mist Drilling):

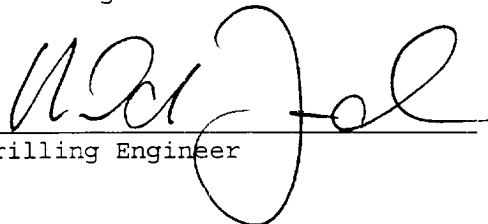
The following equipment will be operational while gas/mist drilling:

- An anchored blooie line will be utilized to discharge all cuttings and circulating medium to the blow pit a minimum of 100' from the wellhead.
- The blooie line will be equipped with an automatic igniter or pilot light.
- Compressors will be located a minimum of 100' from the wellhead in the opposite direction from the blooie line.
- Engines will have spark arresters or water cooled exhaust.
- The rotating head will be properly lubricated and maintained.
- A float valve will be utilized above the bit.
- Mud circulating equipment, water, and mud materials will be sufficient to maintain control of the well.

Additional Information:

- The Mesa Verde formation will be completed.
- No abnormal temperatures or hazards are anticipated.
- Anticipated pore pressures are as follows:

Fruitland Coal	800 psi
Pictured Cliffs	800 psi
Mesa Verde	700 psi
- Sufficient LCM will be added to the mud system to maintain well control, if lost circulation is encountered below the top of the Pictured Cliffs.
- The west half of Section 19 and the northwest quarter of section 30 is dedicated to the Mesa Verde.
- This gas is dedicated.


Drilling Engineer


Date

BURLINGTON RESOURCES OIL & GAS COMPANY QUINN #2B

310' FSL & 1055' FWL, SECTION 19, T31N, R8W, N.M.P.M.
SAN JUAN COUNTY, NEW MEXICO

APD MAP #1

4200' NEW BLM CONSTRUCTION
900' SE/NW SECTION 30, T31N, R8W
700' SW/NE SECTION 30, T31N, R8W
1200' NW/NE SECTION 30, T31N, R8W
600' NE/NW SECTION 30, T31N, R8W
800' SE/SW SECTION 19, T31N, R8W.

