

District I  
PO Box 1980, Hobbs, NM 88241-1980  
District II  
811 S. 1st Street, Artesia, NM 88210-2834  
District III  
1000 Rio Brazos Rd., Aztec, NM 87410  
District IV  
2040 South Pacheco, Santa Fe, NM 87505

State of New Mexico  
Energy, Minerals & Natural Resources Department

OIL CONSERVATION DIVISION  
2040 South Pacheco  
Santa Fe, NM 87505

Form C-101  
Revised October 18, 1999  
Instructions on back  
Submit to Appropriate District Office  
State Lease - 6 Copies  
Fee Lease - 5 Copies

☐ AMENDED REPORT

APPLICATION FOR PERMIT TO DRILL, RE-ENTER, DEEPEN, PLUG BACK, OR ADD A ZONE

<sup>1</sup> Operator name and Address Cross Timbers Operating Company 2700 Farmington Ave., Bldg. K. Ste 1 Farmington, NM 87401		<sup>2</sup> OGRID Number 167067
<sup>4</sup> Property Code 27433	<sup>5</sup> Property Name McKenzie "A"	<sup>3</sup> API Number 30-0 45-30545
		<sup>6</sup> Well No. #2

<sup>7</sup> Surface Location

UL or lot no.	Section	Township	Range	Lot. Idn	Feet from the	North/South Line	Feet from the	East/West line	County
B	9	30N	12W		1,110'	North	1,790	East	San Juan

<sup>8</sup> Proposed Bottom Hole Location If Different From Surface

UL or lot no.	Section	Township	Range	Lot. Idn	Feet from the	North/South Line	Feet from the	East/West line	County
<sup>9</sup> Proposed Pool 1 Aztec Pictured Cliffs					<sup>10</sup> Proposed Pool 2 Basin Fruitland Coal				

<sup>11</sup> Work Type Code N	<sup>12</sup> Well Type Code G	<sup>13</sup> Cable/Rotary R	<sup>14</sup> Lease Type Code P	<sup>15</sup> Ground Level Elevation 5775'
<sup>16</sup> Multiple Yes	<sup>17</sup> Proposed Depth 2,225' -	<sup>18</sup> Formation Pictured Cliffs	<sup>19</sup> Contractor Wayne Smith Drlg	<sup>20</sup> Spud Date Before 7/01

<sup>21</sup> Proposed Casing and Cement Program

Hole Size	Casing Size	Casing weight/foot	Setting Depth	Sacks of Cement	Estimated TOC
8-3/4"	7"	20#, J-55, STC	200'	100	Surface
6-1/4"	4-1/2"	10.5#, J-55, STC	2,225'	210	Surface

<sup>22</sup> Describe the proposed program. If this application is to DEEPEN or PLUG BACK give the data on the present productive zone and proposed new productive zone. Describe the blowout prevention program, if any. Use additional sheets if necessary.

Surface Casing Cement Program. Approx 100 sx class "B" cmt w/2% CaCl<sub>2</sub> & 1/4#/sx celloflake (15.6 ppg, 1.18 cu ft). Circ cmt to surface.

Production Casing Cement Program. Approx 210 sx Premium Lite HS (65% cmt, 35% poz, 6% gel, 10#/sx CSE) cmt or equivalent w/2% CaCl<sub>2</sub> & 1/4#/sx celloflake (12.5 ppg, 2.07 cuft). Exact cmt volume will be calculated from open hole caliper log plus 30%.

See enclosed diagram for BOP program.

<sup>23</sup> I hereby certify that the information given above is true and complete to the best of my knowledge and belief.

Signature:

Printed name: Jeffrey W. Patton

Title: Drilling Engineer

OIL CONSERVATION DIVISION

Approved by:

Title: DEPUTY OIL & GAS INSPECTOR, DIST. 4

Approval Date: FEB - 5 2001

Expiration Date: FEB - 5 2002

DISTRICT I  
P.O. Box 1980, Hobbs, N.M. 88241-1980

DISTRICT II  
P.O. Drawer DD, Artesia, N.M. 88211-0719

DISTRICT III  
1000 Rio Brazos Rd., Aztec, N.M. 87410

DISTRICT IV  
PO Box 2088, Santa Fe, NM 87504-2088

State of New Mexico  
Energy, Minerals & Natural Resources Department

OIL CONSERVATION DIVISION  
P.O. Box 2088  
Santa Fe, NM 87504-2088

Form C-102  
Revised February 21, 1994  
Instructions on back  
Appropriate District Office  
State Lease - 4 Copies  
Fee Lease - 3 Copies

REC'D / SAN JUAN  
JAN 19 2001

☐ AMENDED REPORT

WELL LOCATION AND ACREAGE DEDICATION PLAT

<sup>1</sup> API Number 30-045-30845		<sup>2</sup> Pool Code 71629		<sup>3</sup> Pool Name BASIN FRUITLAND COAL	
<sup>4</sup> Property Code 27433		<sup>5</sup> Property Name MCKENZIE A			<sup>6</sup> Well Number 2
<sup>7</sup> GRID No. 167067		<sup>8</sup> Operator Name CROSS TIMBERS OPERATING CO.			<sup>9</sup> Elevation 5775' -

<sup>10</sup> Surface Location

UL or lot no.	Section	Township	Range	Lot Idn	Feet from the	North/South line	Feet from the	East/West line	County
B	9	30-N	12-W		1110'	NORTH	1790'	EAST	SAN JUAN

<sup>11</sup> Bottom Hole Location If Different From Surface

UL or lot no.	Section	Township	Range	Lot Idn	Feet from the	North/South line	Feet from the	East/West line	County
<sup>12</sup> Dedicated Acres 306.71 E/2			<sup>13</sup> Joint or Infill		<sup>14</sup> Consolidation Code		<sup>15</sup> Order No.		

NO ALLOWABLE WILL BE ASSIGNED TO THIS COMPLETION UNTIL ALL INTERESTS HAVE BEEN CONSOLIDATED  
OR A NON-STANDARD UNIT HAS BEEN APPROVED BY THE DIVISION

<div data-bbox="235 1244 568 1585"><p>FEB 2001 RECEIVED OIL CON. DIV DIST. 3</p></div>	<div data-bbox="438 1010 1104 1585"><p>FD 3 1/2" BC B.L.M. 1976</p><p>N 86-43-22 W 1249.33' (M)</p><p>FD 3 1/2" BC B.L.M. 1976</p><p>N 86-44-32 W 1248.32' (M)</p><p>FD 3 1/2" BC B.L.M. 1975</p><p>LAT: 36°49'53.5" N. LONG: 108°06'03" W.</p><p>1110'</p><p>1790'</p><p>708'</p><p>181'</p><p>2581.67' (M)</p><p>N 01-33-43 E</p></div>		<div data-bbox="1104 1010 1575 1532"><p>17 OPERATOR CERTIFICATION</p><p>I hereby certify that the information contained herein is true and complete to the best of my knowledge and belief</p><p>Signature <u>Jeffrey W. Patton</u></p><p>Printed Name <u>JEFFREY W. PATTON</u></p><p>Title <u>DRILLING ENGINEER</u></p><p>Date <u>1/19/01</u></p></div>
	<div data-bbox="1104 1532 1575 2021"><p>18 SURVEYOR CERTIFICATION</p><p>I hereby certify that the well location shown on this plat was plotted from field notes of actual surveys made by me or under my supervision, and that the same is true and correct to the best of my belief</p><p>Date of Survey <u>1-18</u></p><p>Signature and Seal of Professional Surveyor <u>[Signature]</u></p><p>8894</p><p>Certificate Number</p></div>		

DISTRICT I  
P.O. Box 1980, Hobbs, N.M. 88241-1980

DISTRICT II  
P.O. Drawer DD, Artesia, N.M. 88211-0719

DISTRICT III  
1000 Rio Brazos Rd., Aztec, N.M. 87410

DISTRICT IV  
PO Box 2088, Santa Fe, NM 87504-2088

State of New Mexico  
Energy, Minerals & Natural Resources Department

OIL CONSERVATION DIVISION  
P.O. Box 2088  
Santa Fe, NM 87504-2088

Form C-102  
Revised February 21, 1994  
Instructions on back  
Appropriate District Office  
State Lease - 4 Copies  
Fee Lease - 3 Copies

REC'D / SAN JUAN  
JAN 19 2001

☐ AMENDED REPORT

WELL LOCATION AND ACREAGE DEDICATION PLAT

<sup>1</sup> API Number 30-045-30545		<sup>2</sup> Pool Code 71280		<sup>3</sup> Pool Name AZTEC PICTURED CLIFFS	
<sup>4</sup> Property Code 27433		<sup>5</sup> Property Name McKENZIE A			<sup>6</sup> Well Number 2
<sup>7</sup> OGRID No. 167067		<sup>8</sup> Operator Name CROSS TIMBERS OPERATING CO.			<sup>9</sup> Elevation 5775'

<sup>10</sup> Surface Location

UL or lot no.	Section	Township	Range	Lot Idn	Feet from the	North/South line	Feet from the	East/West line	County
B	9	30-N	12-W		1110'	NORTH	1790'	EAST	SAN JUAN

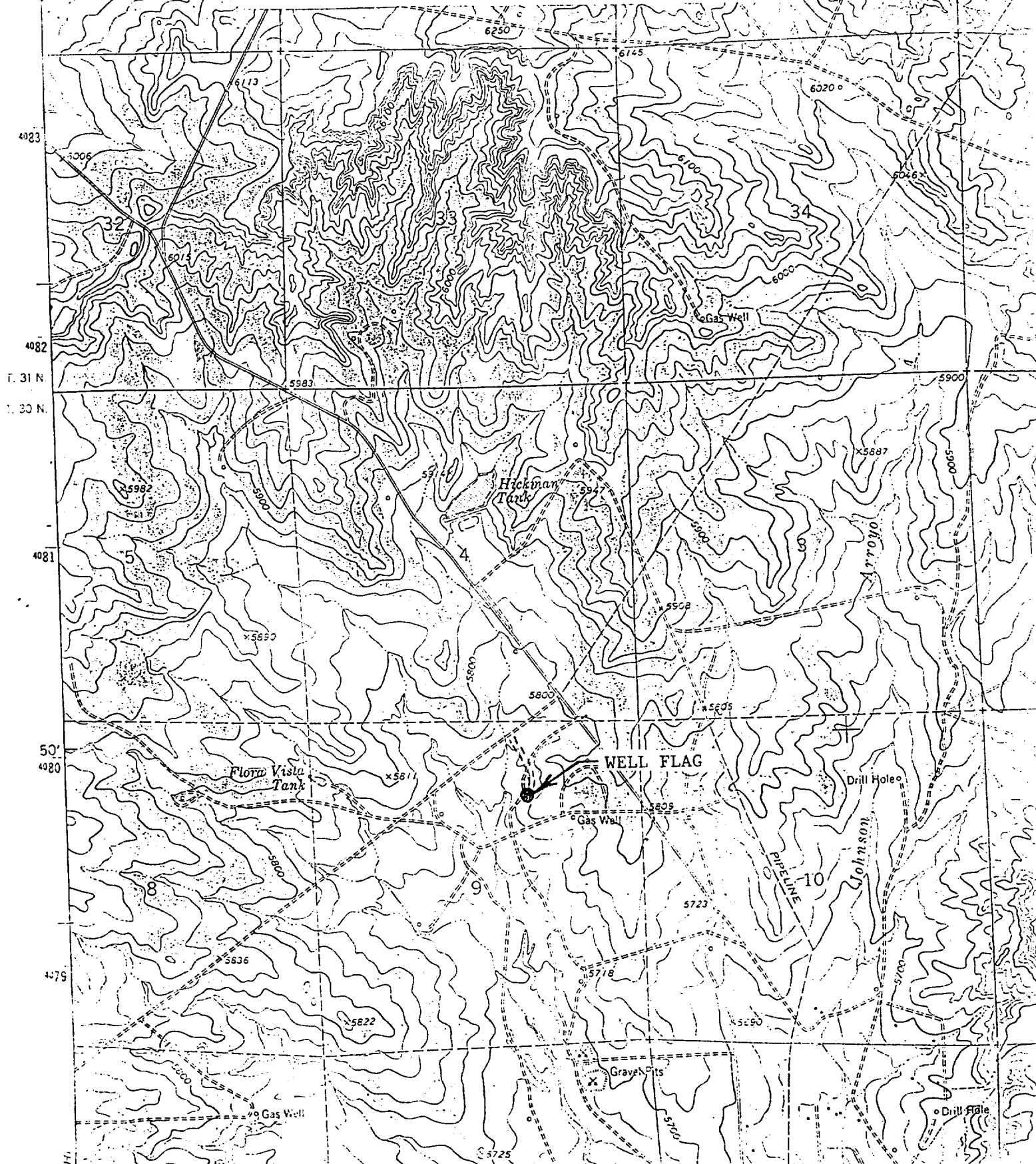
<sup>11</sup> Bottom Hole Location If Different From Surface

UL or lot no.	Section	Township	Range	Lot Idn	Feet from the	North/South line	Feet from the	East/West line	County
<sup>12</sup> Dedicated Acres 153.75 NE/4		<sup>13</sup> Joint or Infill		<sup>14</sup> Consolidation Code		<sup>15</sup> Order No.			

NO ALLOWABLE WILL BE ASSIGNED TO THIS COMPLETION UNTIL ALL INTERESTS HAVE BEEN CONSOLIDATED  
OR A NON-STANDARD UNIT HAS BEEN APPROVED BY THE DIVISION

<div data-bbox="194 1468 519 1808"><p>FEB 2001 RECEIVED OIL CON. DIV. DIST. 5</p></div>	<div data-bbox="422 1000 1088 1532"><p>FD 3 1/2" BC B.L.M. 1976</p><p>N 86-43-22 W 1249.33' (M)</p><p>FD 3 1/2" BC B.L.M. 1976</p><p>N 86-44-32 W 1248.32' (M)</p><p>FD 3 1/2" BC B.L.M. 1975</p><p>LAT: 36°49'53.5" N. LONG: 108°06'03" W.</p><p>1110'</p><p>1790'</p><p>708'</p><p>181'</p><p>2581.67' (M)</p><p>N 01-33-43 E</p></div>		<div data-bbox="1104 1000 1559 1532"><p>17 OPERATOR CERTIFICATION</p><p>I hereby certify that the information contained herein is true and complete to the best of my knowledge and belief</p><p>Signature <u>Jeffrey W. Patton</u></p><p>Printed Name <u>JEFFREY W. PATTON</u></p><p>Title <u>DRILLING ENGINEER</u></p><p>Date <u>1/19/01</u></p></div>
	<div data-bbox="941 1532 1559 2042"><p>18 SURVEYOR CERTIFICATION</p><p>I hereby certify that the well location shown on this plat was plotted from field notes of actual surveys made by me or under my supervision, and that the same is true and correct to the best of my belief</p><p>Date of Survey <u>1-18</u></p><p>Signature and Seal of Professional Surveyor <u>[Signature]</u></p><p>8894</p><p>Certificate Number</p></div>		

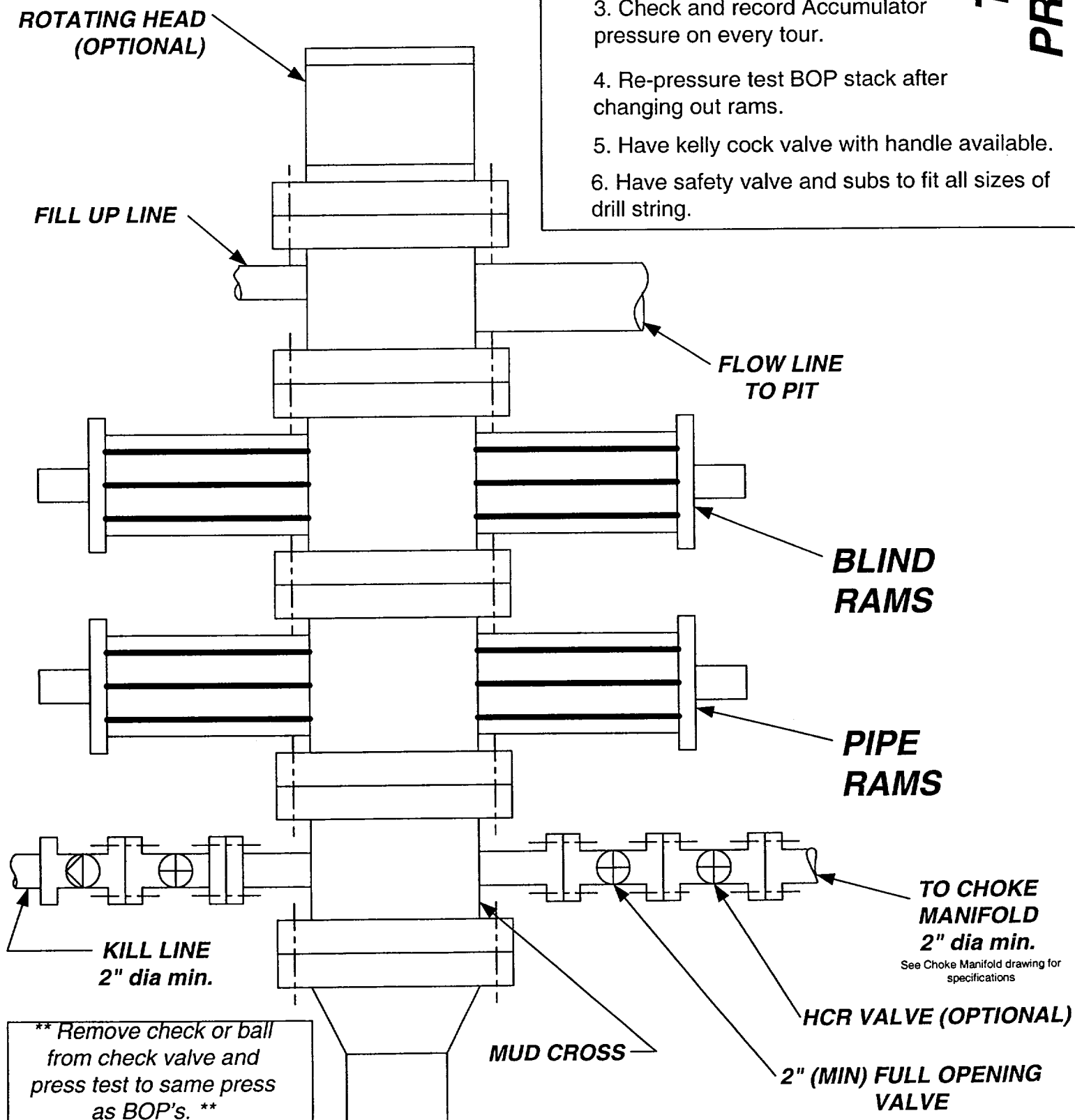
NW/4 SEC. 9, T-30-N, R-12-W, N.M.P.M.,  
SAN JUAN COUNTY, NEW MEXICO  
1110' FNL 1790' FEL





Cross Timbers Operating Company

## BOP SCHEMATIC FOR DRILLING OPERATIONS CLASS 1 (2M) NORMAL PRESSURE



### 1. Test BOP after installation:

Pressure test BOP to 200-300 psig (low pressure) for 5 min.

Test BOP to Working Press or to 70% internal yield of surf csg (10 min).

2. Test operation of (both) rams on every trip.

3. Check and record Accumulator pressure on every tour.

4. Re-pressure test BOP stack after changing out rams.

5. Have kelly cock valve with handle available.

6. Have safety valve and subs to fit all sizes of drill string.

**TESTING  
PROCEDURE**