

UNITED STATES  
DEPARTMENT OF THE INTERIOR  
BUREAU OF LAND MANAGEMENT

APPLICATION FOR PERMIT TO DRILL OR DEEPEN

1a. TYPE OF WORK  
DRILL  DEEPEN

b. TYPE OF WELL  
Oil Well  Gas Well  Other   
SINGLE ZONE  MULTIPLE ZONE

2. Name of Operator  
Dugan Production Corp.

3. Address and Telephone No.  
P.O. Box 420, Farmington, NM 87499 (505) 325-1821

LOCATION OF WELL (Report location clearly and in accordance with any State requirements.)  
At surface 805' FSL & 2195' FWL (SE/4 SW/4)  
At proposed prod. zone same

14. DISTANCE IN MILES AND DIRECTION FROM NEAREST TOWN OR POST OFFICE\*  
6 miles north of Kirtland, New Mexico

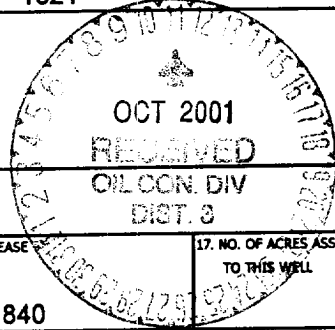
15. DISTANCE FROM PROPOSED\* LOCATION TO NEAREST PROPERTY OR LEASE LINE, FT. (Also to nearest drig. unit line, if any) 805'  
16. NO. OF ACRES IN LEASE 1840  
17. NO. OF ACRES ASSIGNED TO THIS WELL 320 S/2

18. DISTANCE FROM PROPOSED LOCATION\* TO NEAREST WELL, DRILLING, COMPLETED, OR APPLIED FOR, ON THIS LEASE, FT. 1400'  
19. PROPOSED DEPTH 1090'  
20. ROTARY OR CABLE TOOLS Rotary

21. ELEVATIONS (Show whether DF, RT, GR, etc.) 5581' GL  
22. APPROX. DATE WORK WILL START\* ASAP

PROPOSED CASING AND CEMENTING PROGRAM				
SIZE OF HOLE	GRADES, SIZES OF CASING	WEIGHT PER FOOT	SETTING DEPTH	QUANTITY OF CEMENT
8-3/4"	7"	20#	120'	70 cu ft - circ to surface
6 1/4"	4 1/2"	10.5#	1090'	170 cu ft - circ to surface

5. LEASE DESIGNATION AND SERIAL NO. NM-19163  
6. IF INDIAN, ALLOTTED OR TRIBE NAME  
7. UNIT AGREEMENT NAME  
8. FARM OR LEASE NAME, WELL NO. 28964 Turk's Toast Com #92  
9. API Well No. 30-045-30730  
10. FIELD AND POOL, OR WILDCAT Basin Fruitland Coal  
11. SEC., T., R., M., OR BLK AND SURVEY OR AREA Unit N Sec. 18, T30N, R14W  
12. COUNTY OR PARISH San Juan  
13. STATE NM



A water based gel-mud will be used to drill surface and production casing hole. Standard 2,000 psi BOP will be used to drill production hole. The Fruitland Coal will be completed from approximately 950'-965'. The interval will be fractured.

This application is subject to the proposed procedural review pursuant to 43 CFR 3165.3 and appeal pursuant to 43 CFR 3165.4.

ALL INFORMATION CONTAINED HEREIN IS SUBJECT TO COMPLIANCE WITH ATTACHED "GENERAL REQUIREMENTS".

IN ABOVE SPACE DESCRIBE PROPOSED PROGRAM: If proposal is to deepen, give data on present productive zone and proposed new productive zone. If proposal is to drill or deepen directionally, give pertinent data on subsurface locations and measured and true vertical depths. Give blowout preventer program, if any.

24. SIGNED Kurt Fagrellius Title Geologist Date 7/11/2001  
Kurt Fagrellius

(This space for Federal or State office use)

PERMIT NO. \_\_\_\_\_ APPROVAL DATE 10/5/01

Application approval does not warrant or certify that the applicant holds legal or equitable title to those rights in the subject lease which would entitle the applicant to conduct operations thereon.  
CONDITIONS OF APPROVAL, IF ANY:

Approved by J.V.R. Balderaz Title \_\_\_\_\_ Date OCT - 5 2001

\*See Instructions on Reverse Side

Title 18 U.S.C. Section 1001, makes it a crime for any person knowingly and willfully to make to any department or agency of the United States any false, fictitious or fraudulent statements or representations as to any matter within its jurisdiction.

Handwritten mark

District I  
PO Box 1980, Hobbs, NM 88241-1980

State of New Mexico  
Energy, Minerals & Natural Resources Department

Form C-102  
Revised February 21, 1994

District II  
PO Drawer DD, Artesia, NM 88211-0719

Submit to Appropriate District Office  
State Lease - 4 Copies  
Fee Lease - 3 Copies

District III  
1000 Rio Brazos Rd., Aztec, NM 87410

OIL CONSERVATION DIVISION  
PO Box 2088  
Santa Fe, NM 87504-2088

AMENDED REPORT

District IV  
PO Box 2088, Santa Fe, NM 87504-2088

WELL LOCATION AND ACREAGE DEDICATION PLAT

*API Number 30 045 <b>30730</b>		*Pool Code 71629	*Pool Name BASIN FRUITLAND COAL
*Property Code <b>28964</b>	*Property Name TURKS TOAST COM		*Well Number 92
*OGRID No. 006515	*Operator Name DUGAN PRODUCTION CORPORATION		*Elevation 5581'

<sup>10</sup> Surface Location

UL or lot no.	Section	Township	Range	Lot Ion	Feet from the	North/South line	Feet from the	East/West line	County
N	18	30N	14W		805	SOUTH	2195	WEST	SAN JUAN

<sup>11</sup> Bottom Hole Location If Different From Surface

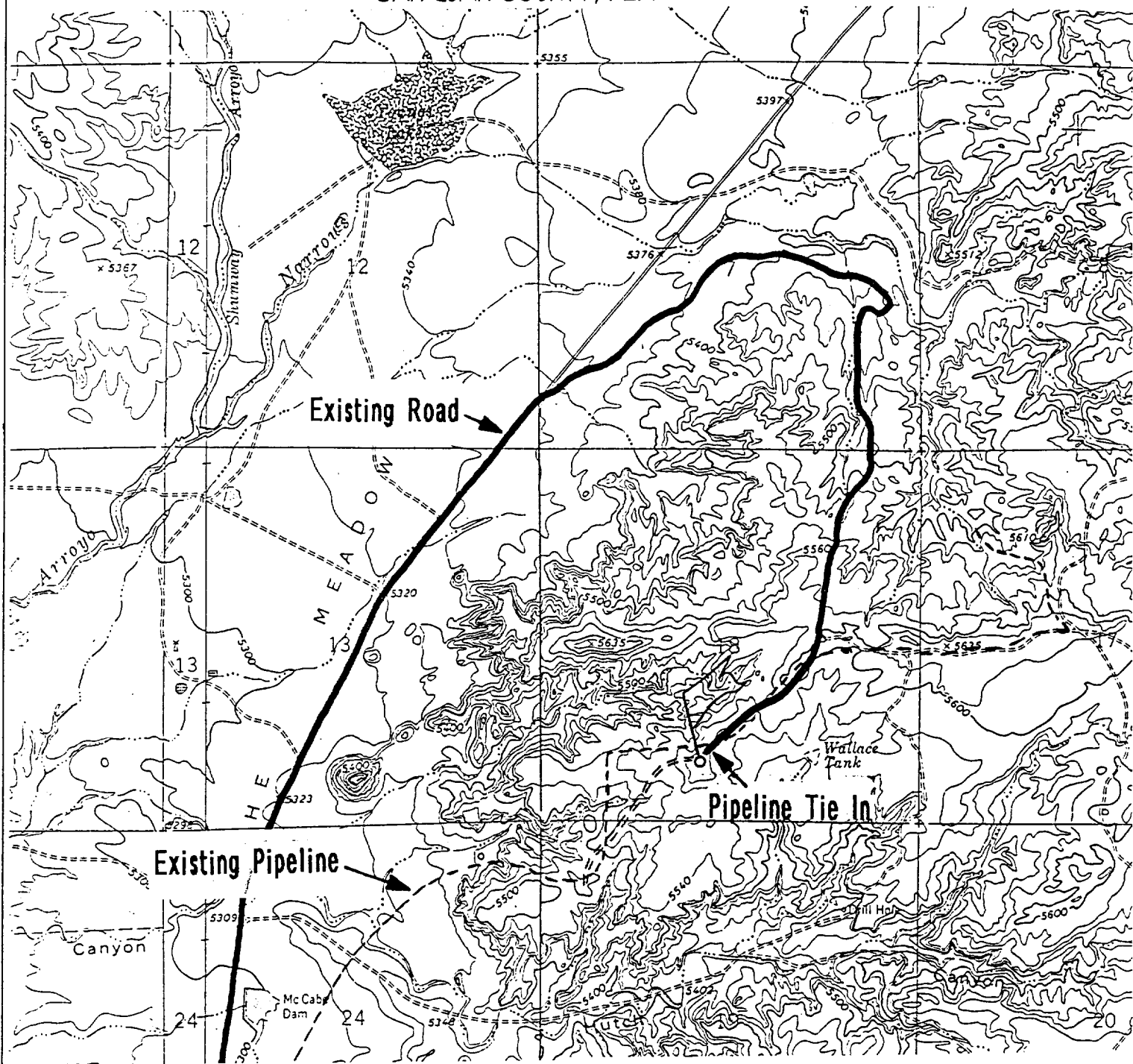
UL or lot no.	Section	Township	Range	Lot Ion	Feet from the	North/South line	Feet from the	East/West line	County
					<sup>12</sup> Dedicated Acres 320 ACRES (S/2)	<sup>13</sup> Joint or Infill	<sup>14</sup> Consolidation Code	<sup>15</sup> Order No.	

NO ALLOWABLE WILL BE ASSIGNED TO THIS COMPLETION UNTIL ALL INTERESTS HAVE BEEN CONSOLIDATED OR A NON-STANDARD UNIT HAS BEEN APPROVED BY THE DIVISION

<p>16</p>	<p>5301.78'</p>	<p><sup>17</sup> OPERATOR CERTIFICATION I hereby certify that the information contained herein is true and complete to the best of my knowledge and belief.</p> <p><i>Kurt Fagrelis</i> Signature</p> <p>Kurt Fagrelis Printed Name</p> <p>Geologist Title</p> <p>July 11, 2001 Date</p>
	<p>2195'</p> <p>805'</p> <p>5300.46'</p> <p>Dugan Prod. NM-19163</p>	<p>5280.00'</p>

DUGAN PRODUCTION CORPORATION TURKS TOAST COM #92

805' FSL & 2195' FWL, SECTION 18, T30N, R14W, N.M.P.M.  
SAN JUAN COUNTY, NEW MEXICO



Existing Roads Exhibit E

Vicinity of nearest town or reference pt.  
6 miles north of Kirtland, New Mexico

Type of surface dirt

Conditions good

Other \_\_\_\_\_

Reference map: USGS map Youngs Lake, NM

DUGAN PRODUCTION CORP. TURK'S TOAST COM #92

Planned Access Road(s) Exhibit E

Width 20' Maximum grades 1%

Drainage design as required

Cuts & Fills as required

Surfacing material none

- Turnouts
- Culverts
- Gates
- Cattleguards
- Fence cuts
- Waterbars
- Access Road & Pipeline

Access road(s)  do/do not cross  Fed/Ind land.

**EXHIBIT B**  
**OPERATIONS PLAN**  
*Turk's Toast Com #92*

**APPROXIMATE FORMATION TOPS:**

Kirtland	surface
Fruitland	600'
Pictured Cliffs	970'
<b>Total Depth</b>	<b>1090'</b>

**LOGGING PROGRAM:** Run cased hole CNL-CDL

Catch samples every 10 feet from 800 feet to total depth.

**CASING PROGRAM:**

<u>Hole Size</u>	<u>Casing Size</u>	<u>Wt./ft.</u>	<u>Setting Depth</u>	<u>Grade and Condition</u>
8-3/4"	7"	20#	±120'	J-55-new
6-1/4"	4-1/2"	10.5#	±1090'	J-55-new

Plan to drill a 8-3/4" hole and set 120' of 7" OD, 20#, J-55 surface casing; then plan to drill a 6-1/4" hole to total depth with gel-water-mud program to test Fruitland Coal Formation. 4 1/2", 10.5# J-55 casing will be run and cemented. Cased hole CNL-CDL log will be run. Productive zone will be perforated and fractured. After frac the well will be cleaned out and production equipment will be installed.

**CEMENTING PROGRAM:** All volumes are contingent upon Caliper logs.

Surface: Cement with 70 cu.ft. Class "B" neat. Circulate to surface

Production Stage - Cement with 110 cu.ft. 2% Lodense with 1/4# celloflake/sx followed by 60 cu.ft. Class "B" with 1/4# celloflake/sx.  
Total cement slurry for production stage is 170 cu.ft.  
Circulate to surface.

An adequate spacer will be pumped ahead of the cement slurry to help prevent mud contamination of the cement. An adequate number of casing centralizers will be run through usable water zones to ensure that casing is centralized through these zones. The adequate number of centralizers will be determined based on API standards. Centralizers to impart a swirling action around the casing will be used just below and into the base of the lowest usable water zone. These devices will assist mud displacement, increase cement bonding potential and create an effective hydraulic seal. A chronological log will be kept which records the pump rate, pump pressure, slurry density, and slurry volume for the cement job. The log will be sent to the BLM after completion of the job.

**WELLHEAD EQUIPMENT:**

Huber 7" x 4-1/2" casing head, 1000#WP, tested to 2000#

Huber 4-1/2" x 2-7/8" tubing head, 1000# WP, tested to 2000#

BOP and Related Equipment will include for a 2000 psi system:

Annual preventer, double ram, or 2 rams with one being blind and one being a pipe ram

Kill line (2" minimum)

1 kill line valve (2" minimum)

1 choke line valve

2 chokes

Upper kelly cock valve with handle available

Safety valve and subs to fit all drill string connections in use

Pressure gauge on choke manifold

2" minimum choke line

Fill-up line

Dugan Prod.Corp. Office & Radio Dispatch:	325-1821
	Kurt Fagrelus 325-4327
John Alexander 325-6927	Mark Brown 327-3632
Sherman Dugan 327-3121	John Roe 326-1034