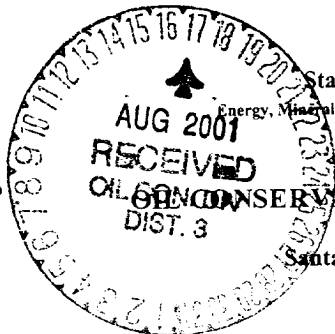


DISTRICT I
P.O. Box 1980, Hobbs, NM 88241-1980

DISTRICT II
P.O. Drawer DD, Artesia, NM 88211-0719

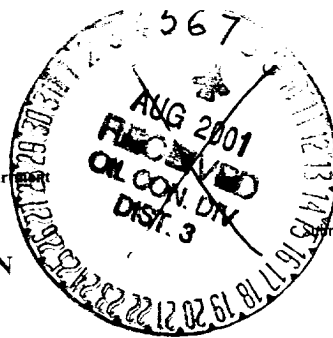
DISTRICT III
1000 Rio Brazos Rd., Aztec, NM 87410

DISTRICT IV
P.O. Box 2088, Santa Fe, NM 87504-2088



State of New Mexico
Energy, Minerals and Natural Resources Department

OIL CONSERVATION DIVISION
PO BOX 2088
Santa Fe, NM 87504-2088



Form C-101
Revised February 10, 1994
Instructions on back
Submit to Appropriate District Office

State Lease - 6 Copies
Fee Lease - 5 Copies

AMENDED REPORT

APPLICATION FOR PERMIT TO DRILL, RE-ENTER, DEEPEN, PLUGBACK, OR ADD A ZONE

Operator Name and Address Calpine Natural Gas 1200 17th Street, Suite 770 Denver, Colorado 80202		OGRID Number 194807
		API Number 30-0 45-30766
Property Code 28115	Property Name Tiger	Well No. 19

Surface Location

UL or lot no.	Section	Township	Range	Lot Idn	Feet from the	North/South Line	Feet from the	East/West Line	County
B	27	30N	13W		980	North	1860	East	San Juan

Proposed Bottom Hole Location If Different From Surface

UL or lot no.	Section	Township	Range	Lot Idn	Feet from the	North/South Line	Feet from the	East/West Line	County
Proposed Pool 1 Basin Fruitland Coal Gas					Proposed Pool 2				

Work Type Code N	Well Type Code G	Cable/Rotary R	Lease Type Code P	Ground Level Elevation 5478 5548
Multiple N	Proposed Depth 1600	Formation Fruitland Coal	Contractor	Spud Date August 1, 2001

Proposed Casing and Cement Program

Hole Size	Casing Size	Casing weight/feet	Setting Depth	Sacks of Cement	Estimated TOC
8-3/4"	7"	23#	230'	60	Surface
6-1/4"	4-1/2"	10.5#	1800'	210	Surface

²² Describe the proposed program. If this application is to DEEPEN or PLUG BACK give the data on the present productive zone and proposed new productive zone. Describe the blowout prevention program, if any. Use additional sheets if necessary.

Calpine Natural Gas proposes to drill a vertical well with a 8 3/4" surface hole to approx. 230' with spud mud and set and cement to surface 7", 23# casing with 60 sx (35 cu.ft.) of CI "B" with additives. A double ram, 2000 psi rated BOP will be installed and pressure tested to 1500 psi. A 6-1/4" hole will be drilled using clear water, natural mud, and water loss control additives to approximately 1800'. New 4 1/2" 10.5# casing will be set and cemented to surface with 210 sx (185 cu.ft.) of CI "B" plus additives.

Tops: Kirtland @ Surface; Fruitland @ 1280; Pictured Cliffs @ 1600'.

²³ I hereby certify that the information given above is true and complete to the best of my knowledge and belief.

Signature:

Printed name: Hugo Cartaya

Title: Production Manager

Date: 08/02/01

Phone: (720) 946-1302

OIL CONSERVATION DIVISION

Approved by:

Title: DEPUTY OIL & GAS INSPECTOR, DIST. # AUG 17 2002

Approval Date: AUG 17 2001

Expiration Date:

Conditions of Approval

Attached

District I
PO Box 1980, Hobbs, NM 88241-1980

District II
PO Drawer 00, Artesia, NM 88211-0719

District III
1000 Rio Brazos Rd., Aztec, NM 87410

District IV
PO Box 2088, Santa Fe, NM 87504-2088

State of New Mexico
Energy, Minerals & Natural Resources Department

OIL CONSERVATION DIVISION
PO Box 2088
Santa Fe, NM 87504-2088

Form C-102
Revised February 21, 1994
Instructions on back
Submit to Appropriate District Office
State Lease - 4 Copies
Fee Lease - 3 Copies

AMENDED REPORT

WELL LOCATION AND ACREAGE DEDICATION PLAT

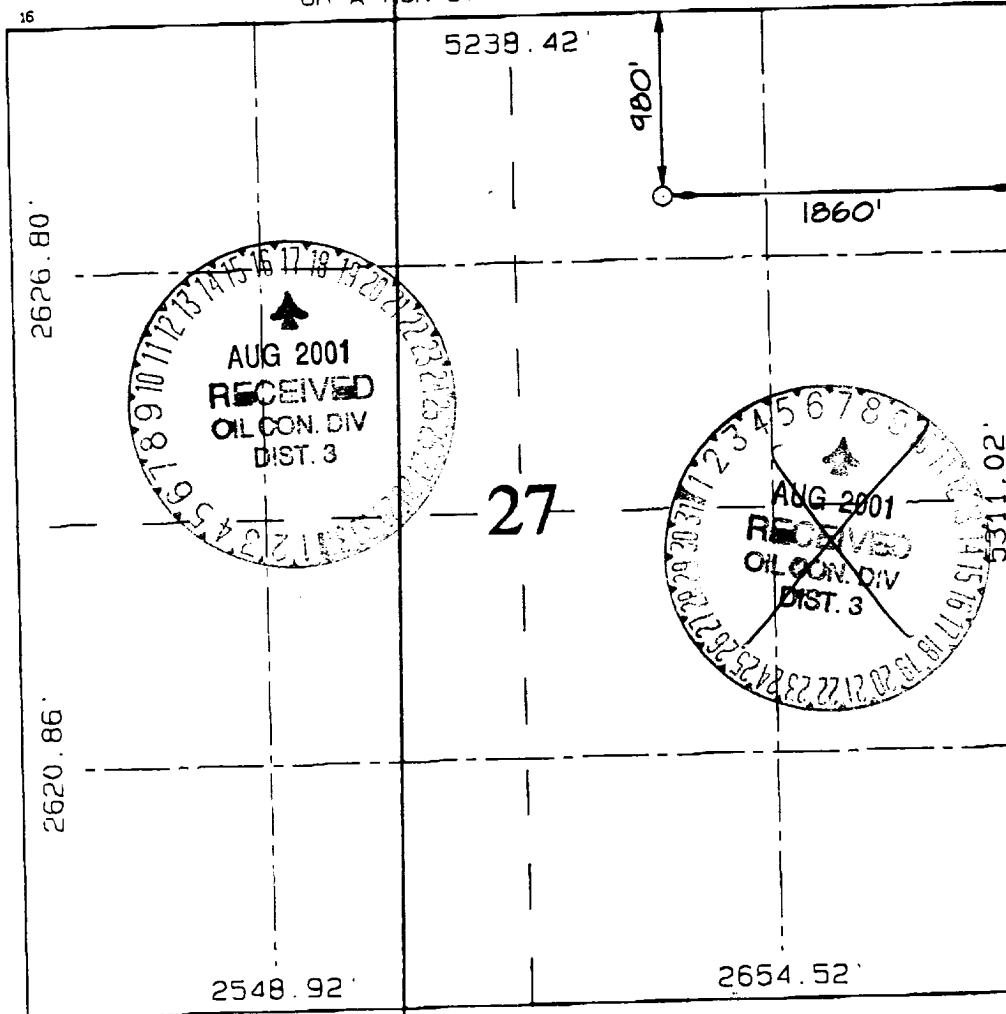
*API Number 30-045-30766		*Pool Code 71629	*Pool Name BASIN FRUITLAND COAL
*Property Code 28115	*Property Name TIGER		*Well Number 19
*GRID No. 194807	*Operator Name CALPINE NATURAL GAS COMPANY		*Elevation 5598'

10 Surface Location									
U. or lot no.	Section	Township	Range	Lot Idn	Feet from the	North/South line	Feet from the	East/West line	County
B	27	30N	13W		980	NORTH	1860	EAST	SAN JUAN

11 Bottom Hole Location If Different From Surface									
U. or lot no.	Section	Township	Range	Lot Idn	Feet from the	North/South line	Feet from the	East/West line	County

12 Dedicated Acres 3.20 EA	13 Joint or Infill	14 Consolidation Code	15 Order No.
--------------------------------------	--------------------	-----------------------	--------------

NO ALLOWABLE WILL BE ASSIGNED TO THIS COMPLETION UNTIL ALL INTERESTS HAVE BEEN CONSOLIDATED OR A NON-STANDARD UNIT HAS BEEN APPROVED BY THE DIVISION



17 OPERATOR CERTIFICATION
I hereby certify that the information contained herein is true and complete to the best of my knowledge and belief.

Signature: *Hugo Cartaya*
Printed Name: **Hugo Cartaya**
Title: **Production Manager**
8/14/01
Date

18 SURVEYOR CERTIFICATION
I hereby certify that the well location shown on this plat was plotted from field notes of actual surveys made by me or under my supervision and that the same is true and correct to the best of my belief.

JUNE 28, 2001
Date of Survey

Signature and Seal of Surveyor
NEALE EDWARDS
NEW MEXICO
6857
Certificate Number: 6857

