

APPLICATION FOR PERMIT TO DRILL, RE-ENTER, DEEPEN, PLUGBACK, OR ADD A ZONE

¹ Operator Name and Address. Burlington Resources Oil & Gas Company PO Box 4289, Farmington, NM 87499		² OGRID Number 14538
⁴ Property Code 6823	⁵ Property Name Beaver Lodge Com	³ API Number 30-045-30789
		⁶ Well No. 1B

⁷ Surface Location

UL or lot no.	Section	Township	Range	Lot Idn	Feet from the	North/South line	Feet from the	East/West line	County
N	32	30N	8W		700	South	1900	West	San Juan

⁸ Proposed Bottom Hole Location If Different From Surface

UL or lot no.	Section	Township	Range	Lot Idn	Feet from the	North/South line	Feet from the	East/West line	County

⁹ Proposed Pool 1

Blanco Mesaverde

¹⁰ Proposed Pool 2

Basin Dakota

¹¹ Work Type Code D	¹² Well Type Code G	¹³ Cable/Rotary Rotary	¹⁴ Lease Type Code State	¹⁵ Ground Level Elevation 6253'
¹⁶ Multiple Y	¹⁷ Proposed Depth 7505'	¹⁸ Formation Mesaverde/Dakota	¹⁹ Contractor N/a	²⁰ Spud Date N/a

²¹ Proposed Casing and Cement Program

Hole Size	Casing Size	Casing weight/foot	Setting Depth	Sacks of Cement	Estimated TOC
12 1/4	9 5/8	32.3#	350'	329 cu.ft.	Surface -
8 3/4	7	20.0#	3145'	945 cu.ft.	Surface -
6 1/4	4 1/2	10.5#	3045-7505'	640 cu.ft.	3045' -

²² Describe the proposed program. If this application is to DEEPEN or PLUG BACK give the data on the present productive zone and proposed new productive zone. Describe the blowout prevention program, if any. Use additional sheets if necessary.

11" 3000 psi minimum double gate BOP

Note: to facilitate higher hydraulic stimulation completion work, no liner hanger will be used. In its place, a long string of 4 1/2" casing will be run and cemented with a minimum of 100' of cement overlap between the 4 1/2" and 7" casing strings. After completion of the well, a 4 1/2" retrievable bridge plug will be set below the top of cement in the 4 1/2" x 7" overlap. The 4 1/2" casing will then be backed off above the top of cement in the 4 1/2" x 7" overlap and laid down. The 4 1/2" bridge plug will then be retrieved and the production tubing will be run to produce the well.

²³ I hereby certify that the information given above is true and complete to the best of my knowledge and belief. Signature: <i>Peggy Cole</i>		OIL CONSERVATION DIVISION	
Printed name: Peggy Cole		Approved by: <i>[Signature]</i>	
Title: Regulatory/Compliance Supervisor		Title: DEPUTY OIL & GAS INSPECTOR, DIST. #3	
Date: 8-21-01		Approval Date: AUG 22 2001	Expiration Date: AUG 22 2002
Phone: 505-326-9700		Conditions of Approval : Attached <input type="checkbox"/>	

K/

DISTRICT I
1825 N. French Dr., Hobbs, N.M. 88240

DISTRICT II
811 South First, Artesia, N.M. 88210

DISTRICT III
1000 Rio Brazos Rd., Aztec, N.M. 87410

DISTRICT IV
2040 South Pacheco, Santa Fe, NM 87505

State of New Mexico
Energy, Minerals & Natural Resources Department

Form C-102
Revised August 15, 2000

OIL CONSERVATION DIVISION

2040 South Pacheco
Santa Fe, NM 87505

Submit to Appropriate District Office
State Lease - 4 Copies
Fee Lease - 3 Copies

☐ AMENDED REPORT

WELL LOCATION AND ACREAGE DEDICATION PLAT

¹ API Number 30-045- 30189	² Pool Code 72319/71599	³ Pool Name Blanco Mesaverde/Basin Dakota
⁴ Property Code 6823	⁵ Property Name BEAVER LODGE COM	⁶ Well Number 1B
⁷ GRID No. 14538	⁸ Operator Name BURLINGTON RESOURCES OIL AND GAS, INC.	⁹ Elevation 6253'

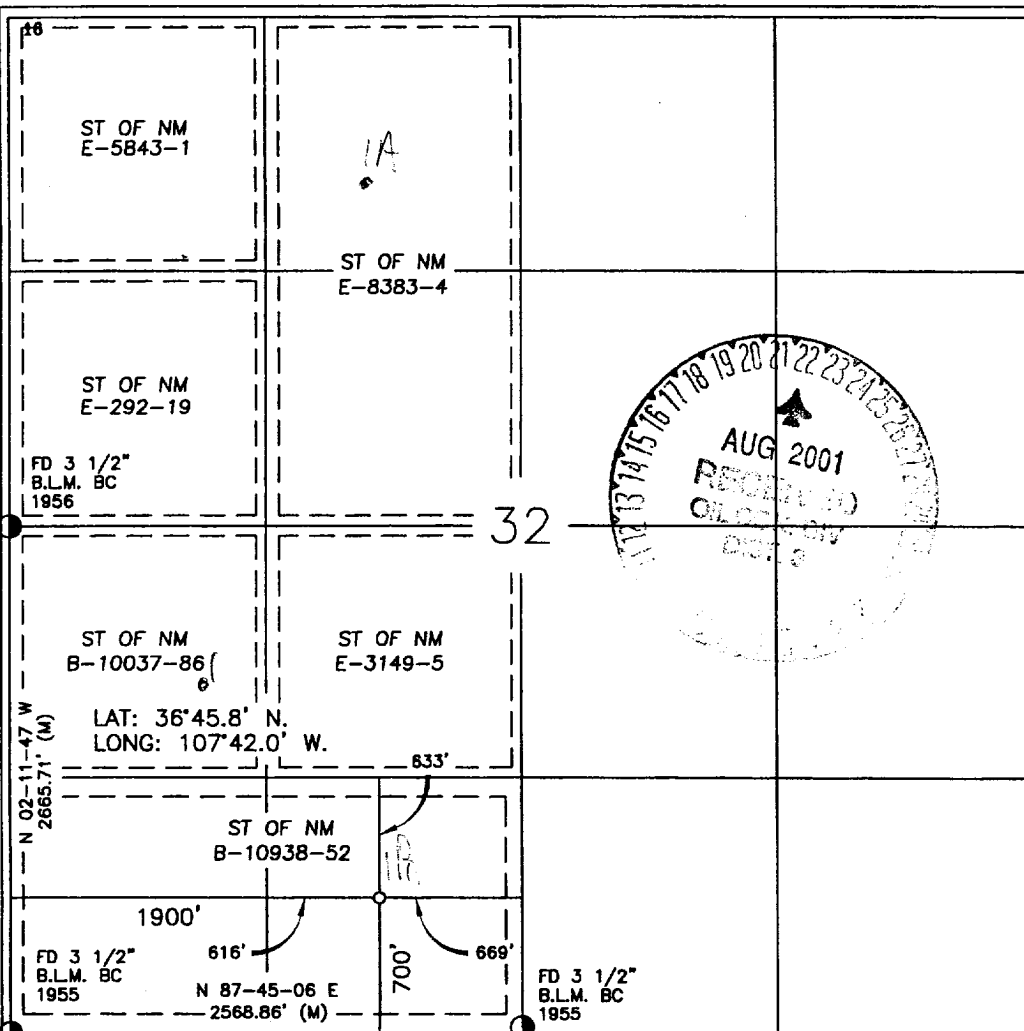
¹⁰ Surface Location

UL or lot no.	Section	Township	Range	Lot Idn	Feet from the	North/South line	Feet from the	East/West line	County
N	32	30-N	8-W		700'	SOUTH	1900'	WEST	SAN JUAN

¹¹ Bottom Hole Location If Different From Surface

UL or lot no.	Section	Township	Range	Lot Idn	Feet from the	North/South line	Feet from the	East/West line	County
¹² Dedicated Acres DK 320/ S2 MV 320/W2					¹³ Joint or Infill		¹⁴ Consolidation Code		¹⁵ Order No.

NO ALLOWABLE WILL BE ASSIGNED TO THIS COMPLETION UNTIL ALL INTERESTS HAVE BEEN CONSOLIDATED
OR A NON-STANDARD UNIT HAS BEEN APPROVED BY THE DIVISION



¹⁷ OPERATOR CERTIFICATION

I hereby certify that the information contained herein is true and complete to the best of my knowledge and belief

Signature

Peggy Cole
Printed Name

Regulatory Supervisor
Title

Date 8-16-01

¹⁸ SURVEYOR CERTIFICATION

I hereby certify that the well location shown on this plat was plotted from field notes of actual surveys made by me or under my supervision, and that the same is true and correct to the best of my belief.

Date of Survey 6-20-01

Signature and Seal of Professional Surveyor:

ROY A. RUSH
NEW MEXICO
8894
PROFESSIONAL LAND SURVEYOR

Certificate Number 8894