

PO Box 1980, Hobbs, NM 88241-1980

Energy, Minerals &amp; Natural Resources Department

Revised October 18, 1994

District II

Instructions on back

811 South First, Artesia, NM 88210

OIL CONSERVATION DIVISION

Submit to Appropriate District Office

District III

2040 South Pacheco

State Lease - 6 Copies

1000 Rio Brazos Rd., Aztec, NM 87410

Santa Fe, NM 87505

Fee Lease - 5 Copies

District IV

2040 South Pacheco, Santa Fe, NM 87505

AMENDED REPORT

## APPLICATION FOR PERMIT TO DRILL, RE-ENTER, DEEPEN, PLUGBACK, OR ADD A ZONE

<sup>1</sup> Operator Name and Address. Burlington Resources Oil & Gas Company PO Box 4289, Farmington, NM 87499		<sup>2</sup> OGRID Number 14538
		<sup>3</sup> API Number 30-045-30890
<sup>4</sup> Property Code 7313	<sup>5</sup> Property Name Mims 36 State Com	<sup>6</sup> Well No. 1M

<sup>7</sup> Surface Location

UL or lot no.	Section	Township	Range	Lot Idn	Feet from the	North/South line	Feet from the	East/West line	County
K	36	30N	11W		1365	South	1900	West	San Juan

<sup>8</sup> Proposed Bottom Hole Location If Different From Surface

UL or lot no.	Section	Township	Range	Lot Idn	Feet from the	North/South line	Feet from the	East/West line	County

<sup>9</sup> Proposed Pool 1 Otero Chacra/Blanco Mesaverde	<sup>10</sup> Proposed Pool 2 Basin Dakota
---	---

<sup>11</sup> Work Type Code D	<sup>12</sup> Well Type Code G	<sup>13</sup> Cable/Rotary Rotary	<sup>14</sup> Lease Type Code State	<sup>15</sup> Ground Level Elevation 5857'
<sup>16</sup> Multiple Y	<sup>17</sup> Proposed Depth 7005'	<sup>18</sup> Formation Chacra/Mesaverde/Dakota	<sup>19</sup> Contractor N/a	<sup>20</sup> Spud Date N/a

<sup>21</sup> Proposed Casing and Cement Program

Hole Size	Casing Size	Casing weight/foot	Setting Depth	Sacks of Cement	Estimated TOC
12 1/4	9 5/8	32.3#	200'	188 cu.ft.	Surface ✓
8 3/4	7	20.0#	2439'	733 cu.ft.	Surface -
6 1/4	4 1/2	10.5#	2339-7005' ✓	670 cu.ft.	2339' —

<sup>22</sup> Describe the proposed program. If this application is to DEEPEN or PLUG BACK give the data on the present productive zone and proposed new productive zone. Describe the blowout prevention program, if any. Use additional sheets if necessary.

11" 3000 psi minimum double gate BOP

<sup>23</sup> I hereby certify that the information given above is true and complete to the best of my knowledge and belief.

Signature:

Printed name: Peggy Cole

Title: Regulatory/Compliance Supervisor

Date:

Phone: 505-326-9700

## OIL CONSERVATION DIVISION

Approved by:

Title: DISTRICT OIL &amp; GAS INSPECTOR, DIST. 1

Approval Date:

NOV 13 2001

Expiration Date:

NOV 13 2002

Conditions of Approval:

Attached ☐

DISTRICT I  
1625 N. French Dr., Hobbs, N.M. 88240

State of New Mexico  
Energy, Minerals & Natural Resources Department

Form C-102  
Revised August 15, 2000

DISTRICT II  
811 South First, Artesia, N.M. 88210

Submit to Appropriate District Office  
State Lease - 4 Copies  
Fee Lease - 3 Copies

DISTRICT III  
1000 Rio Brazos Rd., Aztec, N.M. 87410

OIL CONSERVATION DIVISION

2040 South Pacheco  
Santa Fe, NM 87505

DISTRICT IV  
2040 South Pacheco, Santa Fe, NM 87505

☐ AMENDED REPORT

WELL LOCATION AND ACREAGE DEDICATION PLAT

<sup>1</sup> API Number 30-045- <b>30890</b>	<sup>2</sup> Pool Code 82329/72319/71599	<sup>3</sup> Pool Name Otero Chacra/Blanco Mesaverde/Basin Dakota
<sup>4</sup> Property Code <b>7313</b>	<sup>5</sup> Property Name MIMS 36 STATE COM	<sup>6</sup> Well Number 1M
<sup>7</sup> OGRIID No. 14538	<sup>8</sup> Operator Name BURLINGTON RESOURCES OIL & GAS INC.	<sup>9</sup> Elevation 5857

<sup>10</sup> Surface Location

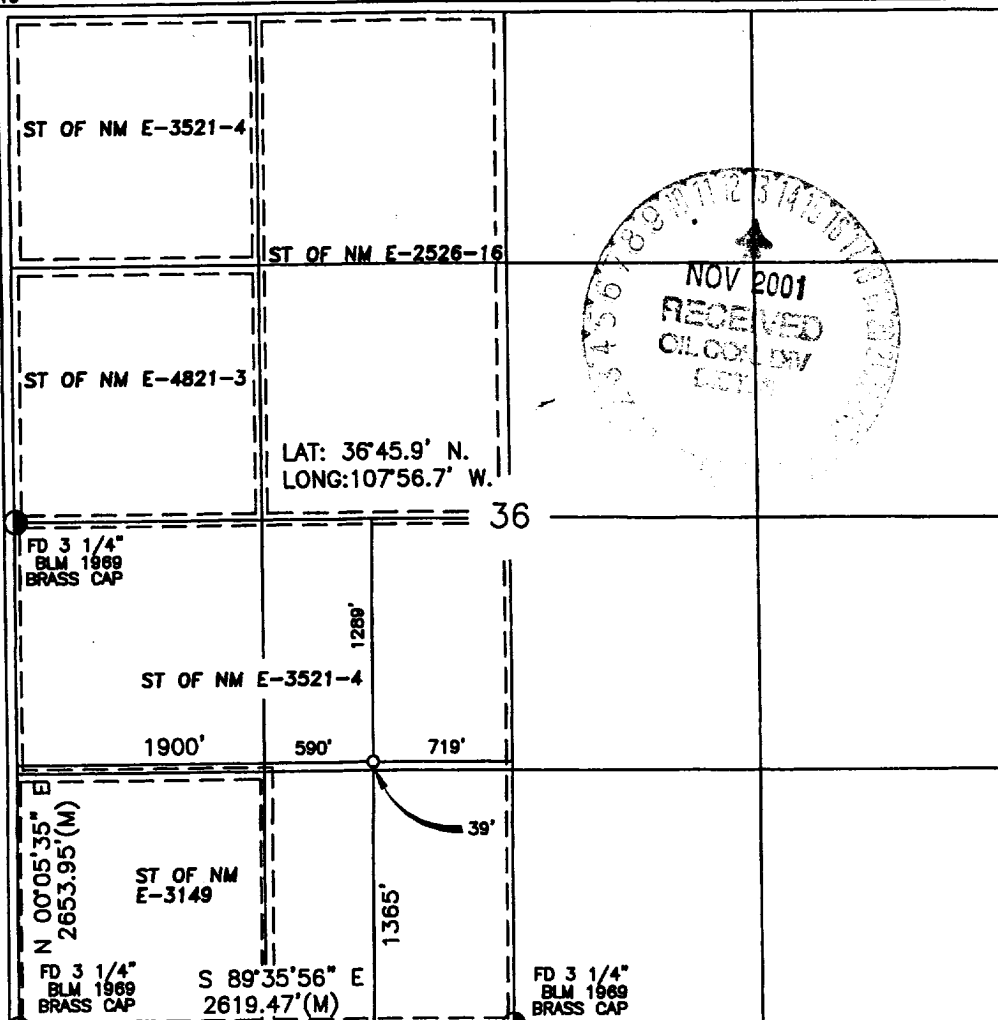
UL or lot no.	Section	Township	Range	Lot Idn	Feet from the	North/South line	Feet from the	East/West line	County
K	36	30-N	11-W		1365	SOUTH	1900	WEST	SAN JUAN

<sup>11</sup> Bottom Hole Location If Different From Surface

UL or lot no.	Section	Township	Range	Lot Idn	Feet from the	North/South line	Feet from the	East/West line	County
<sup>12</sup> Dedicated Acres Cha: SW/160 MV/DK: W/320			<sup>13</sup> Joint or Infill		<sup>14</sup> Consolidation Code		<sup>15</sup> Order No.		

NO ALLOWABLE WILL BE ASSIGNED TO THIS COMPLETION UNTIL ALL INTERESTS HAVE BEEN CONSOLIDATED  
OR A NON-STANDARD UNIT HAS BEEN APPROVED BY THE DIVISION

16



17 OPERATOR CERTIFICATION

I hereby certify that the information contained herein  
is true and complete to the best of my knowledge and  
belief.

*Peggy Cole*  
Signature

Peggy Cole

Printed Name

Regulatory Supervisor

Title

Date

11-9-01

18 SURVEYOR CERTIFICATION

I hereby certify that the well location shown on this plat  
was plotted from field notes of actual surveys made by  
me or under my supervision, and that the same is true  
and correct to the best of my belief.

*[Signature]*  
Signature and Seal of Professional Surveyor

Date of Survey

8894

Certificate Number