

District I
PO Box 1980, Hobbs, NM 88241-1980
District II
811 S. 1st Street, Artesia, NM 88210-2834
District III
1000 Rio Brazos Rd., Aztec, NM 87410
District IV
2040 South Pacheco, Santa Fe, NM 87505

State of New Mexico
Energy, Minerals & Natural Resources Department

OIL CONSERVATION DIVISION
2040 South Pacheco
Santa Fe, NM 87505

Form C-101
Revised October 18, 1999
Instructions on back
Submit to Appropriate District Office
State Lease - 6 Copies
Fee Lease - 5 Copies

☐ AMENDED REPORT

APPLICATION FOR PERMIT TO DRILL, RE-ENTER, DEEPEN, PLUGBACK, OR ADD A ZONE

¹ Operator name and Address XTO Energy Inc. 2700 Farmington Ave., Bldg. K. Ste 1 Farmington, NM 87401		² OGRID Number 167067
³ API Number 30-045-31217		⁴ Property Code 22597
⁵ Property Name BRUINGTON GAS COM "C"		⁶ Well No. #1F

⁷ Surface Location

UL or lot no.	Section	Township	Range	Lot. Idn	Feet from the	North/South Line	Feet from the	East/West line	County
G	21	30N	11W		1,900'	North	1,480'	East	San Juan

⁸ Proposed Bottom Hole Location If Different From Surface

UL or lot no.	Section	Township	Range	Lot. Idn	Feet from the	North/South Line	Feet from the	East/West line	County
⁹ Proposed Pool 1 Basin Dakota					¹⁰ Proposed Pool 2 Blanco Mesaverde				

¹¹ Work Type Code N	¹² Well Type Code G	¹³ Cable/Rotary R	¹⁴ Lease Type Code Fee	¹⁵ Ground Level Elevation 5,808' Ground Level
¹⁶ Multiple Yes	¹⁷ Proposed Depth 7,125'	¹⁸ Formation Dakota/Mesaverde	¹⁹ Contractor Bearcat Drilling	²⁰ Spud Date Fall, 2002

²¹ Proposed Casing and Cement Program

Hole Size	Casing Size	Casing weight/foot	Setting Depth	Sacks of Cement	Estimated TOC
12-1/4"	8-5/8"	24.0#/ft	320'	+150 sx	Surface
7-7/8"	4-1/2"	10.5 #/ft	7,125'	+1,005 sx	Surface

²² Describe the proposed program. If this application is to DEEPEN or PLUG BACK give the data on the present productive zone and proposed new productive zone. Describe the blowout prevention program, if any. Use additional sheets if necessary.

Drill to 320'. Cmt 8-5/8" csg w/150 sx Type III cmt w/2% CC & 1/4#/sx cello (14.5 ppg, 1.39 cuft, 6.8 gal/sx).
Set 4-1/2" csg @ 7,125'. Cmt first stg (lead) w/320 sx C1 H w/4% gel, 2% Phenoseal, 1/4#/sx cello, 0.5% FL & 0.25% disp (14.7 ppg, 1.38 cuft, 6.7 gal/sx) followed by 110 sx C1 H w/2% econolite, 2% Phenoseal & 1/4# celloflake (11.8 ppg, 1.96 cuft, 14.7 gal/sx). Cement second stg w/225 sx Premium Lite HS w/2% KCl, 2% Phenoseal & 1/4# cello (12.5 ppg, 2.01 cuft, 10.7 gal/sx) followed by 350 sx Type III w/3% econolite, 2% Phenoseal & 1/4# cello (11.3 ppg, 2.83 cuft, 17.6 gal/sx).
Final volume will be obtained from caliper log +35%. See attached BOP diagram.

²³ I hereby certify that the information given above is true and complete to the best of my knowledge and belief.

Signature:

Printed name: Jeffrey W. Patton

Title: Drilling Engineer

OIL CONSERVATION DIVISION

Approved by:

Title: DEPUTY OIL & GAS INSPECTOR, DIST. #3

Approval Date:

Expiration Date:

SEP 27 2002

SEP 27 2003

DISTRICT I
P.O. Box 1980, Hobbs, N.M. 88241-1980

State of New Mexico
Energy, Minerals & Natural Resources Department

DISTRICT II
P.O. Drawer DD, Artesia, N.M. 88211-0719

DISTRICT III
1000 Rio Brazos Rd., Aztec, N.M. 87410

DISTRICT IV
PO Box 2088, Santa Fe, NM 87504-2088

OIL CONSERVATION DIVISION

P.O. Box 2088
Santa Fe, NM 87504-2088

Form C-102

Revised February 21, 1994

Instructions on back

Submit to Appropriate District Office

State Lease - 4 Copies

Fee Lease - 3 Copies

☐ AMENDED REPORT

WELL LOCATION AND ACREAGE DEDICATION PLAT

¹ API Number 30-065-31217	² Pool Code 72319	³ Pool Name BLANCO MESAVERDE
⁴ Property Code 22597	⁵ Property Name BRUINGTON GAS COM C	⁶ Well Number 1F
⁷ OGRD No. 167067	⁸ Operator Name XTO ENERGY INC.	⁹ Elevation 5808

¹⁰ Surface Location

UL or lot no.	Section	Township	Range	Lot Idn	Feet from the	North/South line	Feet from the	East/West line	County
G	21	30-N	11-W		1900	NORTH	1480	EAST	SAN JUAN

¹¹ Bottom Hole Location If Different From Surface

UL or lot no.	Section	Township	Range	Lot Idn	Feet from the	North/South line	Feet from the	East/West line	County
¹² Dedicated Acres 317.88		¹³ Joint or Infill I		¹⁴ Consolidation Code		¹⁵ Order No.			

NO ALLOWABLE WILL BE ASSIGNED TO THIS COMPLETION UNTIL ALL INTERESTS HAVE BEEN CONSOLIDATED
OR A NON-STANDARD UNIT HAS BEEN APPROVED BY THE DIVISION

<div>16</div> <div>FD 3 1/4" BC BLM 1989</div> <div>S 89-53-50 W 2523.8' (M)</div> <div>LAT. 36°47'59.5" N LONG. 107°59'34" W</div> <div>1044'</div> <div>585'</div> <div>775'</div> <div>1900'</div> <div>218'</div> <div>1480'</div> <div>21</div> <div>FD 3 1/4" BC BLM 1989</div>	<div>17</div> <div>OPERATOR CERTIFICATION</div> <div>I hereby certify that the information contained herein is true and complete to the best of my knowledge and belief</div> <div>Signature JEFFREY W. PATTON</div> <div>Printed Name JEFFREY W. PATTON</div> <div>Title DRILLING ENGINEER</div> <div>Date 9-23-02</div>
<div>18</div> <div>FD 3 1/4" BC BLM 1989</div> <div>S 02-32-34 E 2674.6' (M)</div> <div>14827</div> <div>REGISTERED PROFESSIONAL SURVEYOR</div> <div>14827</div> <div>Certificate Number</div>	<div>18</div> <div>SURVEYOR CERTIFICATION</div> <div>I hereby certify that the well location shown on this plat was plotted from field notes of actual surveys made by me or under my supervision and that the same is true and correct to the best of my knowledge and belief</div> <div>Date of Survey 9-23-02</div> <div>Signature and Seal of Registered Professional Surveyor</div> <div>14827</div> <div>Certificate Number</div>

DISTRICT I
P.O. Box 1980, Hobbs, N.M. 88241-1980

DISTRICT II
P.O. Drawer DD, Artesia, N.M. 88211-0719

DISTRICT III
000 Rio Brazos Rd., Aztec, N.M. 87410

DISTRICT IV
P.O. Box 2088, Santa Fe, NM 87504-2088

State of New Mexico
Energy, Minerals & Natural Resources Department

OIL CONSERVATION DIVISION

P.O. Box 2088
Santa Fe, NM 87504-2088

Form C-102
Revised February 21, 1994
Instructions on back
Submit to Appropriate District Office
State Lease - 4 Copies
Fee Lease - 3 Copies

☐ AMENDED REPORT

WELL LOCATION AND ACREAGE DEDICATION PLAT

¹ API Number 30-045-31217	² Pool Code 71599	³ Pool Name BASIN DAKOTA
⁴ Property Code 22597	⁵ Property Name BRUINGTON GAS COM C	⁶ Well Number 1F
⁷ OGRIID No. 167067	⁸ Operator Name XTO ENERGY INC.	⁹ Elevation 5808

¹⁰ Surface Location

UL or lot no.	Section	Township	Range	Lot Idn	Feet from the	North/South line	Feet from the	East/West line	County
G	21	30-N	11-W		1900	NORTH	1480	EAST	SAN JUAN

¹¹ Bottom Hole Location If Different From Surface

UL or lot no.	Section	Township	Range	Lot Idn	Feet from the	North/South line	Feet from the	East/West line	County

¹² Dedicated Acres 320 N/2	¹³ Joint or Infill I	¹⁴ Consolidation Code	¹⁵ Order No.
--	------------------------------------	----------------------------------	-------------------------

NO ALLOWABLE WILL BE ASSIGNED TO THIS COMPLETION UNTIL ALL INTERESTS HAVE BEEN CONSOLIDATED
OR A NON-STANDARD UNIT HAS BEEN APPROVED BY THE DIVISION

	<p>FD 3 1/4\" BC BLM 1989</p> <p>S 89-53-50 W 2523.8'(M)</p> <p>1900'</p> <p>1044'</p> <p>565'</p> <p>218'</p> <p>1480'</p> <p>775'</p> <p>S 02-32-34 E 2674.6'(M)</p> <p>LAT. 36°47'59.5\" N LONG. 107°59'34\" W</p> <p>21</p> <p>FD 3 1/4\" BC BLM 1989</p>	<p>17 OPERATOR CERTIFICATION</p> <p>I hereby certify that the information contained herein is true and complete to the best of my knowledge and belief</p> <p>Signature <u>Jeffrey W. Patton</u></p> <p>Printed Name <u>JEFFREY W. PATTON</u></p> <p>Title <u>DRILLING ENGINEER</u></p> <p>Date <u>9-23-02</u></p> <p>18 SURVEYOR CERTIFICATION</p> <p>I hereby certify that the well location shown on this plat was plotted from field notes of actual surveys made by me or under my supervision, and that the same is true and correct to the best of my knowledge and belief</p> <p>Date of Survey <u>14827</u></p> <p>Signature and Seal of Registered Professional Surveyor <u>[Signature]</u></p> <p>Certificate Number <u>14827</u></p>
--	---	--

XTO ENERGY INC.

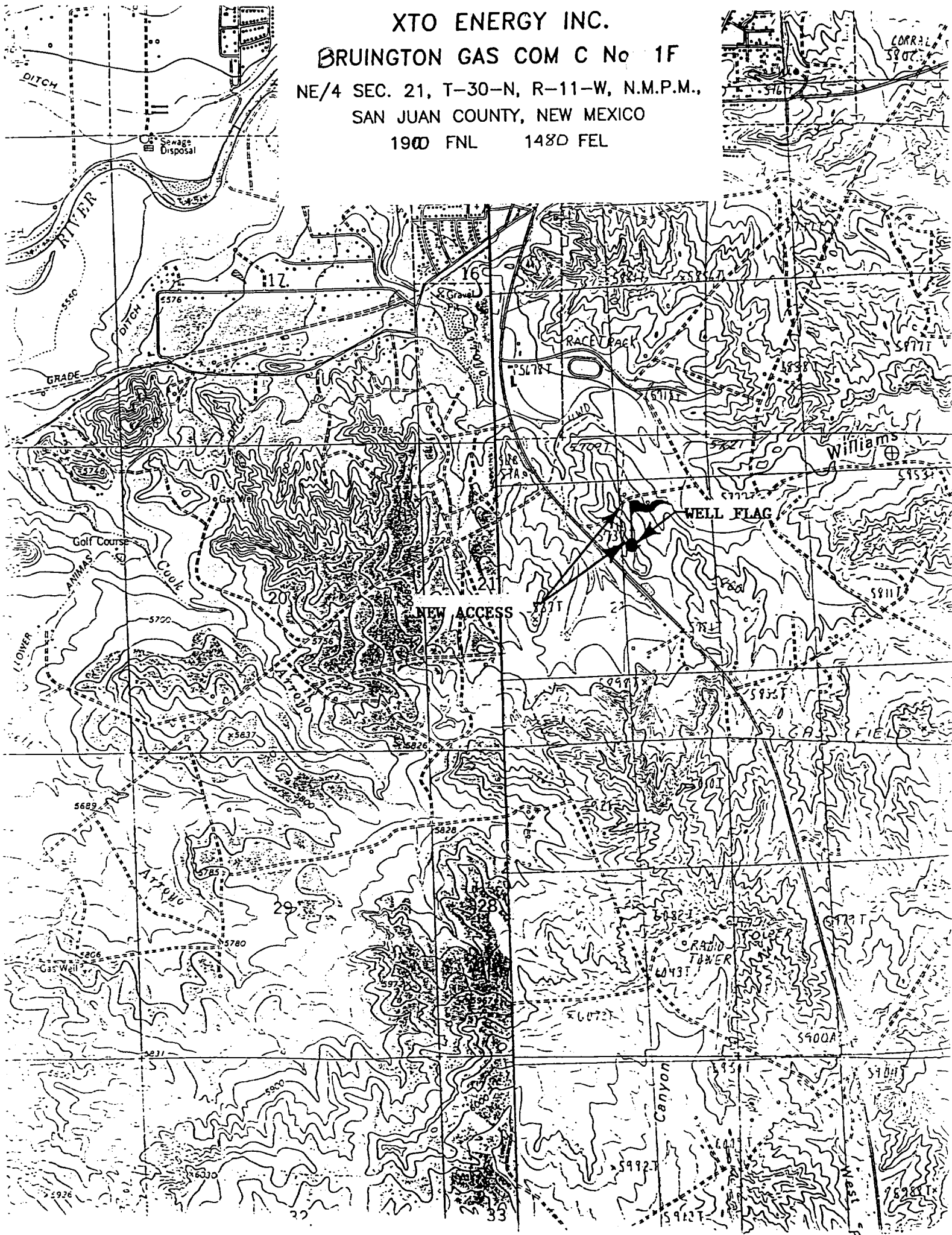
BRUINGTON GAS COM C No 1F

NE/4 SEC. 21, T-30-N, R-11-W, N.M.P.M.,

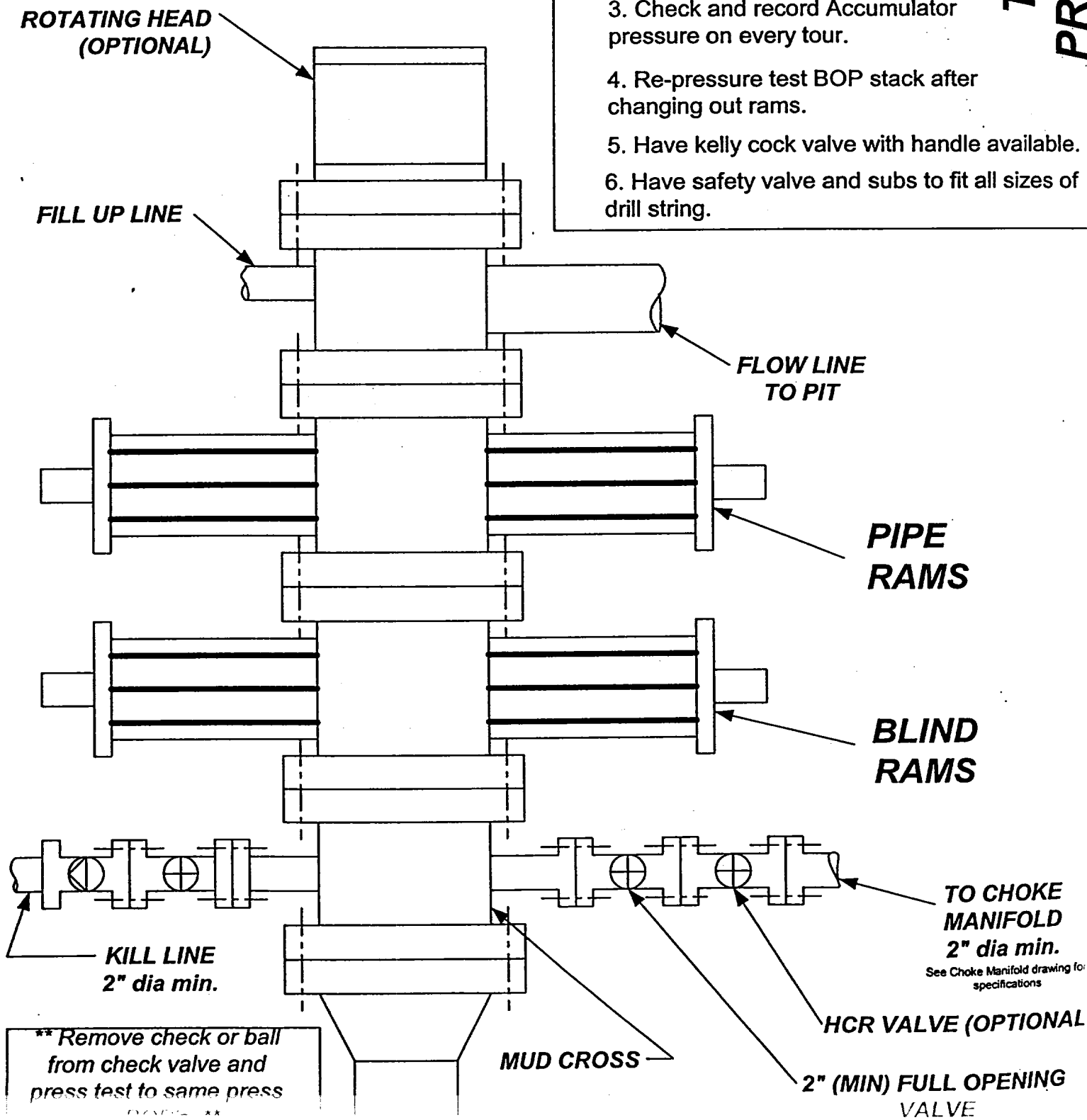
SAN JUAN COUNTY, NEW MEXICO

1900 FNL

1480 FEL



BOP SCHEMATIC FOR DRILLING OPERATIONS CLASS 1 (2M) NORMAL PRESSURE



1. Test BOP after installation:

Pressure test BOP to 200-300 psig (low pressure) for 5 min.

Test BOP to Working Press or to 70% internal yield of surf csg (10 min).

2. Test operation of (both) rams on every trip.

3. Check and record Accumulator pressure on every tour.

4. Re-pressure test BOP stack after changing out rams.

5. Have kelly cock valve with handle available.

6. Have safety valve and subs to fit all sizes of drill string.

**TESTING
PROCEDURE**

**** Remove check or ball from check valve and press test to same press**