

UNITED STATES  
DEPARTMENT OF THE INTERIOR  
BUREAU OF LAND MANAGEMENT

APPLICATION FOR PERMIT TO DRILL, DEEPEN, OR PLUG BACK

1a. TYPE OF WELL  
DRILL ☐ DEEPEN ☐ PLUG BACK ☐

b. TYPE OF WELL

OIL  
WELL ☐

GAS  
WELL ☒

OTHER ☐

SINGLE  
ZONED ☐

MULTIPLE  
ZONED ☒

2. NAME OF OPERATOR

Celeste C. Grynberg

3. ADDRESS OF OPERATOR

5000 S. Quebec St. Suite 500 Denver, Colorado 80237

4. LOCATION OF WELL (Report location clearly and in accordance with any State requirements.)

At surface

1060' FNL & 805' FWL

At proposed prod. zone

14. DISTANCE IN MILES AND DIRECTION FROM NEAREST TOWN OR POST OFFICE\*

33 miles west of Dulce New Mexico

15. DISTANCE FROM PROPOSED\*

LOCATION TO NEAREST  
PROPERTY OR LEASE LINE, FT.  
(Also to nearest drg. unit line, if any)

805

16. NO. OF ACRES IN LEASE

1350.36 320

17. NO. OF ACRES ASSIGNED

TO THIS WELL

160/320/320

18. DISTANCE FROM PROPOSED LOCATION\*  
TO NEAREST WELL, DRILLING, COMPLETED,  
OR APPLIED FOR, ON THIS LEASE, FT.

N/A

19. PROPOSED DEPTH

8461' KB

20. ROTARY OR CABLE TOOLS

Service Rig

21. ELEVATIONS (Show whether DF, RT, GR, etc.)

7090' G.L.

This action is subject to technical and

procedural review pursuant to 43 CFR 3165.3

and appeal pursuant to 43 CFR 3165.4.

DRILLING OPERATIONS ARE  
SUBJECT TO COMPLIANCE WITH ATTACHED  
GENERAL REQUIREMENTS

SIZE OF HOLE	SIZE OF CASING	WEIGHT PER FOOT	SETTING DEPTH	QUANTITY OF CEMENT
13 3/4"	10 3/4"	40.5#	318' KB	300 SX
8 3/4"	4 1/2"	11.6#	8833' KB	800 SX

This project is the re-entry of the Belco Petroleum Carracas Mesa Unit #1-26 Well, drilled, tested and abandoned in 1965. The Dakota FM (8541' - 8820' KB O.A.) was perforated. Stimulated and abandoned (cement squeeze). A 30 SX surface plug was set. Grynberg proposes to drill out the surface plug and test the Gallup FM (7588' - 7638' KB) and the Mesa Verde-FM (6324' to 6400' KB)

RECEIVED

JAN 04 1990

OIL CON. DIV  
DIST. 3

RECEIVED

OCT 16 1989

OIL CON. DIV  
DIST. 3

IN ABOVE SPACE DESCRIBE PROPOSED PROGRAM: If proposal is to deepen or plug back, give data on present productive zone and proposed new productive zone. If proposal is to drill or deepen directionally, give pertinent data on subsurface locations and measured and true vertical depths. Give blowout preventer program, if any.

24.

SIGNED

Ken D. Spraggs

TITLE

Operations Manager

(This space for Federal or State office use)

PERMIT NO.

APPROVAL DATE

APPROVED BY

CONDITIONS OF APPROVAL, IF ANY:

TITLE

\*See Instructions On Reverse Side

JICARUA DISTRICT			
RE AUG 11 1989			
3-1			
3-2			
3-3			
3-4			
3-5			
3-6			
3-7			
3-8			
3-9			
3-10			
3-11			
3-12			
3-13			
3-14			
3-15			
3-16			
3-17			
3-18			
3-19			
3-20			
3-21			
3-22			
3-23			
3-24			
3-25			
3-26			
3-27			
3-28			
3-29			
3-30			
3-31			
3-32			
3-33			
3-34			
3-35			
3-36			
3-37			
3-38			
3-39			
3-40			
3-41			
3-42			
3-43			
3-44			
3-45			
3-46			
3-47			
3-48			
3-49			
3-50			
3-51			
3-52			
3-53			
3-54			
3-55			
3-56			
3-57			
3-58			
3-59			
3-60			
3-61			
3-62			
3-63			
3-64			
3-65			
3-66			
3-67			
3-68			
3-69			
3-70			
3-71			
3-72			
3-73			
3-74			
3-75			
3-76			
3-77			
3-78			
3-79			
3-80			
3-81			
3-82			
3-83			
3-84			
3-85			
3-86			
3-87			
3-88			
3-89			
3-90			
3-91			
3-92			
3-93			
3-94			
3-95			
3-96			
3-97			
3-98			
3-99			
3-100			

APPROVED  
AS AMENDED

OCT 01 1989

AREA MANAGER

NMOOD

\*See Instructions On Reverse Side

**RECEIVED**  
JAN 29 1990  
OIL CON. DIV  
DIST. 3

Submit to Appropriate  
District Office  
State Lease - 4 copies  
Fee Lease - 3 copies

State of New Mexico  
Energy, Minerals and Natural Resources Department

Form C-102  
Revised 1-1-89

OIL CONSERVATION DIVISION

P.O. Box 2088

Santa Fe, New Mexico 87504-2088

DISTRICT I  
P.O. Box 1980, Hobbs, NM 88240

DISTRICT II  
P.O. Drawer DD, Artesia, NM 88210

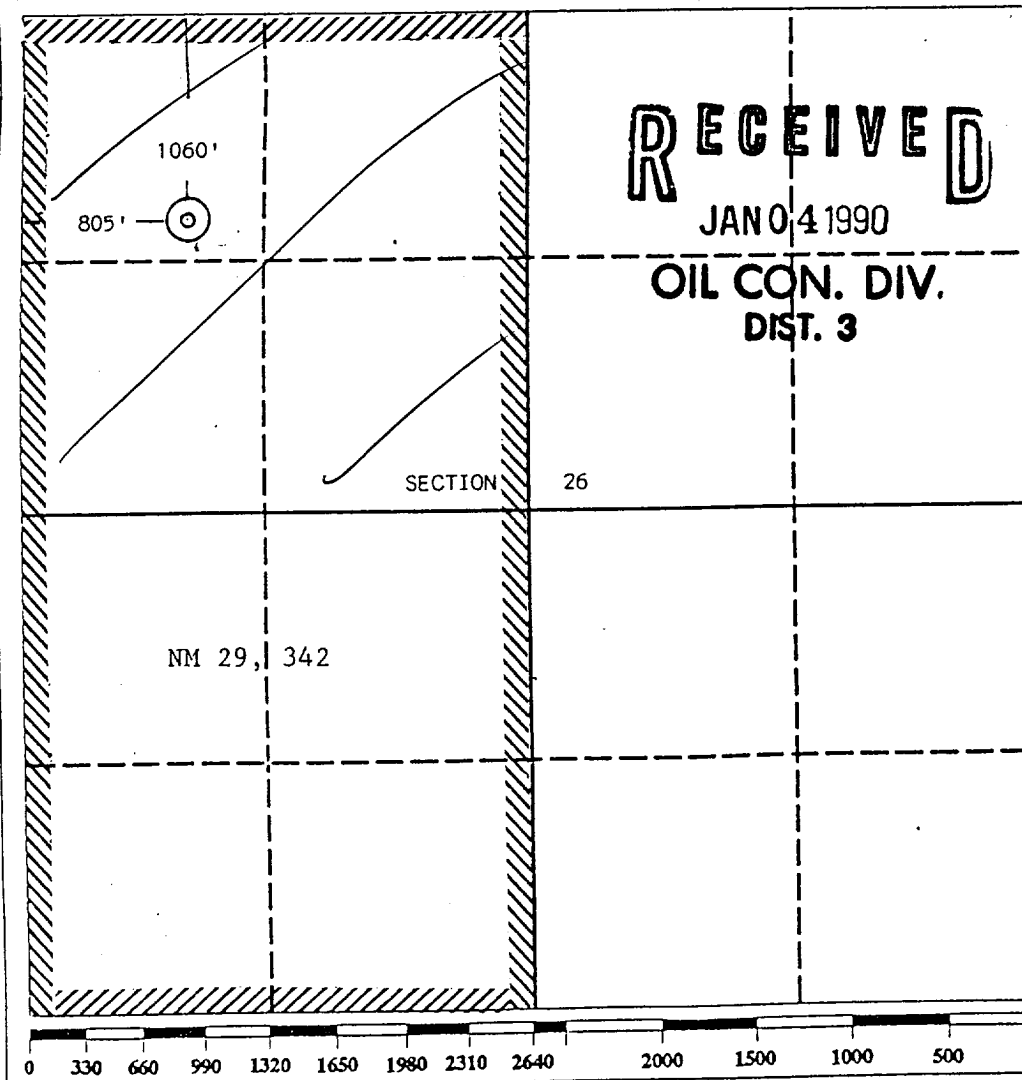
DISTRICT III  
1000 Rio Brazos Rd., Aztec, NM 87410

WELL LOCATION AND ACREAGE DEDICATION PLAT

All Distances must be from the outer boundaries of the section

Operator Celeste C. Grynberg		Lease CARRACAS MESA UNIT Federal 26		Well No. #1
Unit Letter D	Section 26	Township 32 North	Range 5 West	County NMPM Rio Arriba
Actual Footage Location of Well: 1060 feet from the North line and 805 feet from the West line				
Ground level Elev. Field (7107 Record) 7090	Producing Formation GALLUP/MV	Pool ROSA GAL EXT BLANCO MV EXT	Dedicated Acreage: 160/320/20 Acres	

- Outline the acreage dedicated to the subject well by colored pencil or hatchure marks on the plat below.
- If more than one lease is dedicated to the well, outline each and identify the ownership thereof (both as to working interest and royalty).
- If more than one lease of different ownership is dedicated to the well, have the interest of all owners been consolidated by communitization, unitization, force-pooling, etc.?  
☐ Yes ☐ No If answer is "yes" type of consolidation \_\_\_\_\_  
If answer is "no" list the owners and tract descriptions which have actually been consolidated. (Use reverse side of this form if necessary).  
No allowable will be assigned to the well until all interests have been consolidated (by communitization, unitization, forced-pooling, or otherwise) or until a non-standard unit, eliminating such interest, has been approved by the Division.



OPERATOR CERTIFICATION

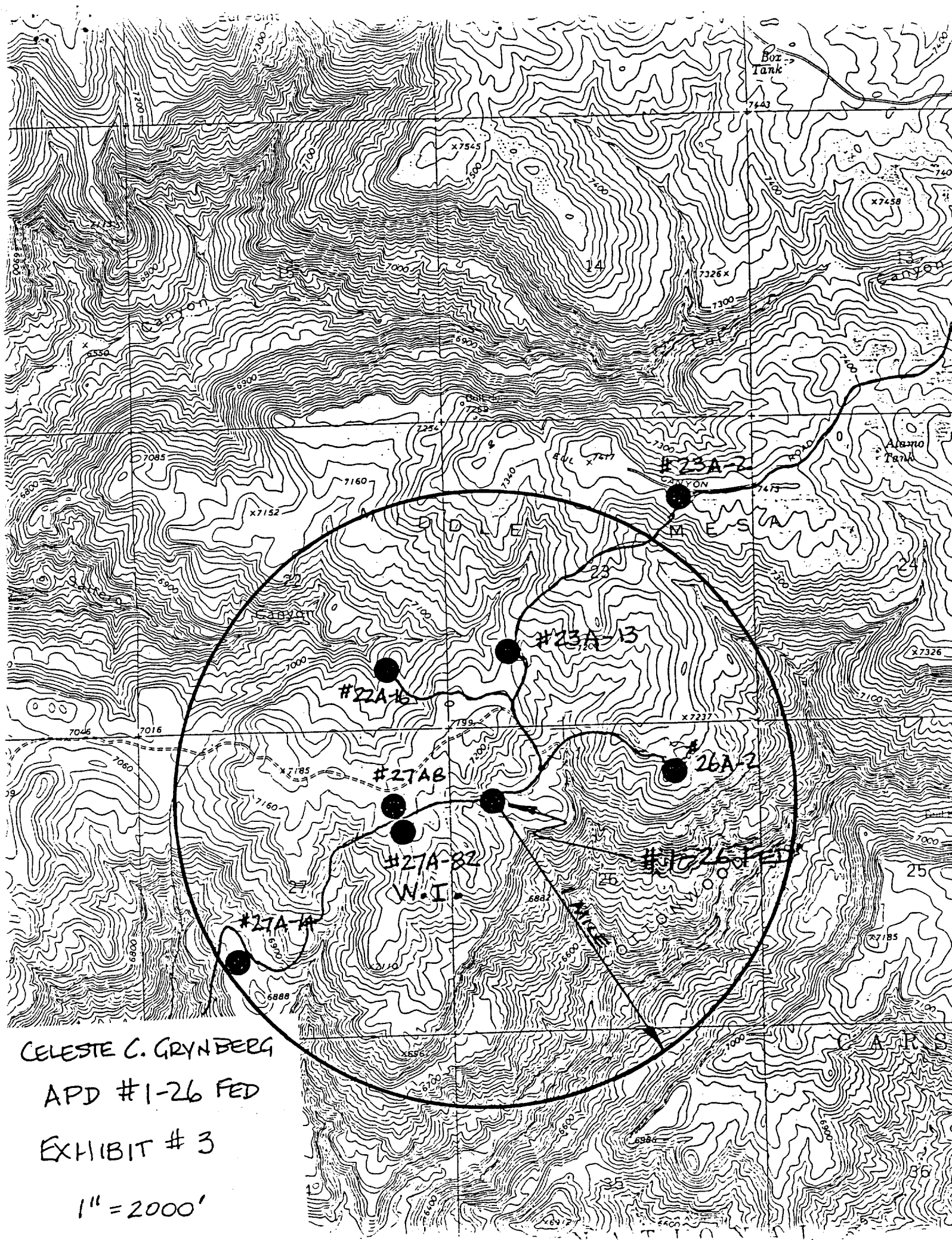
I hereby certify that the information contained herein is true and complete to the best of my knowledge and belief.

Signature  
Ken D. Spraggs  
Position  
Operations Manager  
Company  
Grynberg Petroleum Co.  
Date  
August 7, 1989

SURVEYOR CERTIFICATION

I hereby certify that the well location shown on this plat was plotted from field notes of actual surveys made by me or under my supervision, and that the same is true and correct to the best of my knowledge and belief.

Date Surveyed  
February 6, 1989  
Signature & Seal of Professional Surveyor  
Edgar L. Risenhoover  
Certificate No. 5979  
Edgar L. Risenhoover



CELESTE C. GRYNBERG  
APD #1-26 FED  
EXHIBIT # 3  
1" = 2000'