

UNITED STATES  
DEPARTMENT OF THE INTERIOR  
GEOLOGICAL SURVEY

30-039-20933

## APPLICATION FOR PERMIT TO DRILL, DEEPEN, OR PLUG BACK

## 1a. TYPE OF WORK

DRILL ☒DEEPEN ☐PLUG BACK ☐

## b. TYPE OF WELL

OIL  
WELL ☐GAS  
WELL ☒

OTHER

SINGLE  
ZONE ☐MULTIPLE  
ZONE ☐

## 2. NAME OF OPERATOR

LONE STAR INDUSTRIES, INC.

## 3. ADDRESS OF OPERATOR

%JOHN E. SCHALK, P. O. BOX 2078, FARMINGTON, N. M.

## 4. LOCATION OF WELL (Report location clearly and in accordance with any State requirements.)\*

At surface

1170' FROM SOUTH LINE, 790' FROM EAST LINE

At proposed prod. zone

SECTION 33, TOWNSHIP 32 NORTH, RANGE 5 WEST

## 14. DISTANCE IN MILES AND DIRECTION FROM NEAREST TOWN OR POST OFFICE\*

55 MILES EAST AND NORTH OF BLOOMFIELD, NEW MEXICO

## 15. DISTANCE FROM PROPOSED\*

LOCATION TO NEAREST  
PROPERTY OR LEASE LINE, FT.  
(Also to nearest drilg. unit line, if any)

790'

## 16. NO. OF ACRES IN LEASE

640

## 18. DISTANCE FROM PROPOSED LOCATION\*

TO NEAREST WELL, DRILLING, COMPLETED,  
OR APPLIED FOR, ON THIS LEASE, FT.

100'

## 19. PROPOSED DEPTH

5700

## 21. ELEVATIONS (Show whether DF, RT, GR, etc.)

6301.0 GR

## 23.

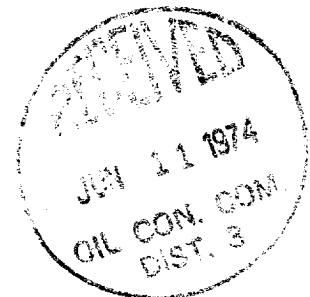
## PROPOSED CASING AND CEMENTING PROGRAM

SIZE OF HOLE	SIZE OF CASING	WEIGHT PER FOOT	SETTING DEPTH	QUANTITY OF CEMENT
12-1/4"	8-5/8"	24#	250	250 SACKS
7-7/8"	4-1/2"	10.5#	5700	300 SACKS

WILL DRILL WITH ROTARY TOOLS TO TEST THE MESA VERDE FORMATION. WILL RUN AN INDUCTION LOG AND FORMATION DENSITY CALIPER GAMMA RAY LOG AT TOTAL DEPTH. IF PRODUCTIVE, WILL CEMENT 4-1/2" CASING AND PERFORATE AS NEEDED.

## ESTIMATED TOPS

OJO ALAMO	2412'
KIRTLAND	2522'
PICTURED CLIFFS	3107'
CLIFF HOUSE	5445'
POINT LOOKOUT	5589'
TOTAL DEPTH	5700'



IN ABOVE SPACE DESCRIBE PROPOSED PROGRAM: If proposal is to deepen or plug back, give data on present productive zone and proposed new productive zone. If proposal is to drill or deepen directionally, give pertinent data on subsurface locations and measured and true vertical depths. Give blowout preventer program, if any.

## 24.

SIGNED

TITLE

AGENT

DATE MAY 29, 1974

(This space for Federal or State office use)

PERMIT NO.

APPROVAL DATE

APPROVED BY

TITLE

DATE

JUN 10 1974

CONDITIONS OF APPROVAL, IF ANY:

\*See Instructions On Reverse Side

U. S. GEOLOGICAL SURVEY  
WASHINGTON, D. C.

**NEW MEXICO OIL CONSERVATION COMMISSION  
WELL LOCATION AND ACREAGE DEDICATION PLAT**

Form C-102  
Supersedes C-128  
Effective 1-1-65

All distances must be from the outer boundaries of the Section.

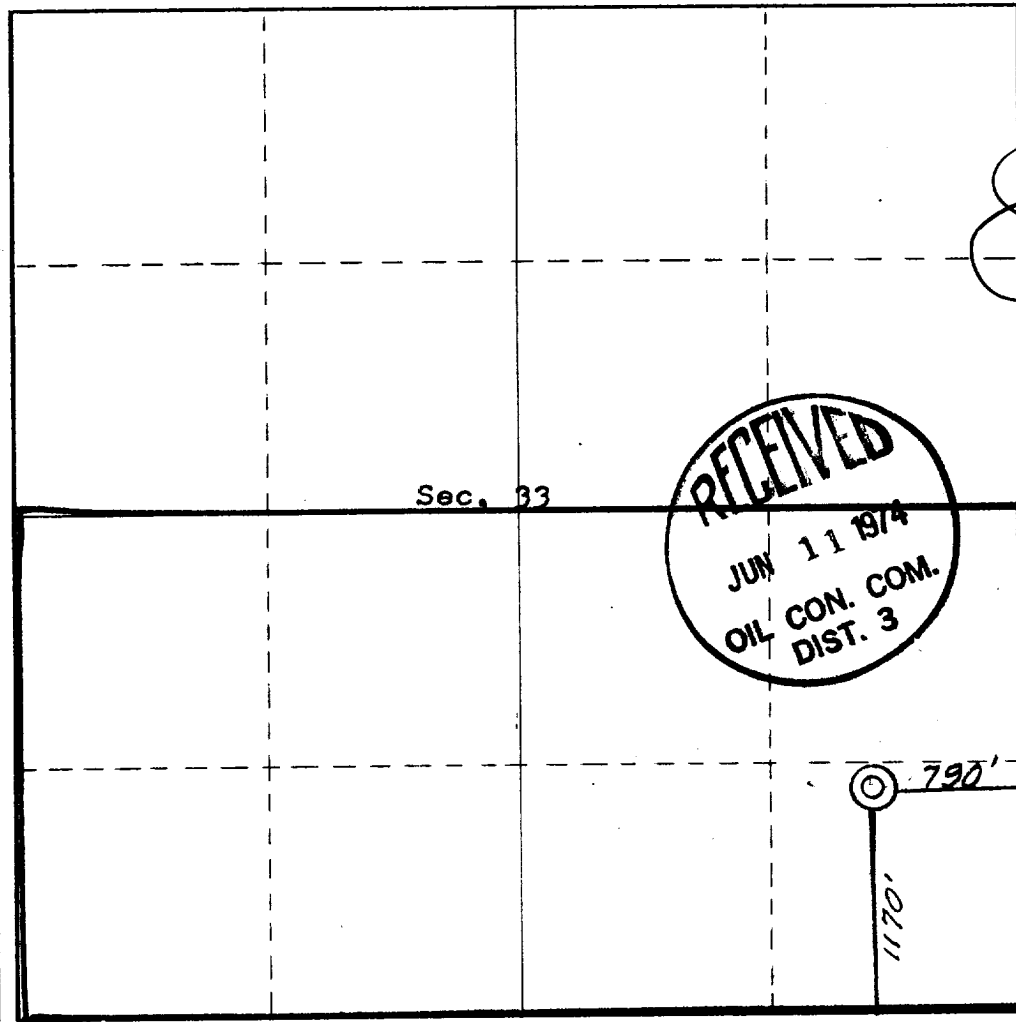
Operator <b>LONE STAR INDUSTRIES-SCHALK</b>			Lease <b>62</b>		Well No. <b>3</b>
Unit Letter <b>P</b>	Section <b>33</b>	Township <b>32 NORTH</b>	Range <b>5 WEST</b>	County <b>RIO ARriba</b>	
Actual Footage Location of Well: <b>1170</b> feet from the <b>SOUTH</b> line and <b>790</b> feet from the <b>EAST</b> line					
Ground Level Elev. <b>6301.0</b>	Producing Formation <b>BLANCO MESA VERDE</b>	Pool <b>Blanco MESA VERDE</b>	Dedicated Acreage: <b>320</b> Acres		

1. Outline the acreage dedicated to the subject well by colored pencil or hatchure marks on the plat below.
2. If more than one lease is dedicated to the well, outline each and identify the ownership thereof (both as to working interest and royalty).
3. If more than one lease of different ownership is dedicated to the well, have the interests of all owners been consolidated by communitization, unitization, force-pooling, etc?

☐ Yes   ☐ No   If answer is "yes," type of consolidation \_\_\_\_\_

If answer is "no," list the owners and tract descriptions which have actually been consolidated. (Use reverse side of this form if necessary.) \_\_\_\_\_

No allowable will be assigned to the well until all interests have been consolidated (by communitization, unitization, forced-pooling, or otherwise) or until a non-standard unit, eliminating such interests, has been approved by the Commission.



**CERTIFICATION**

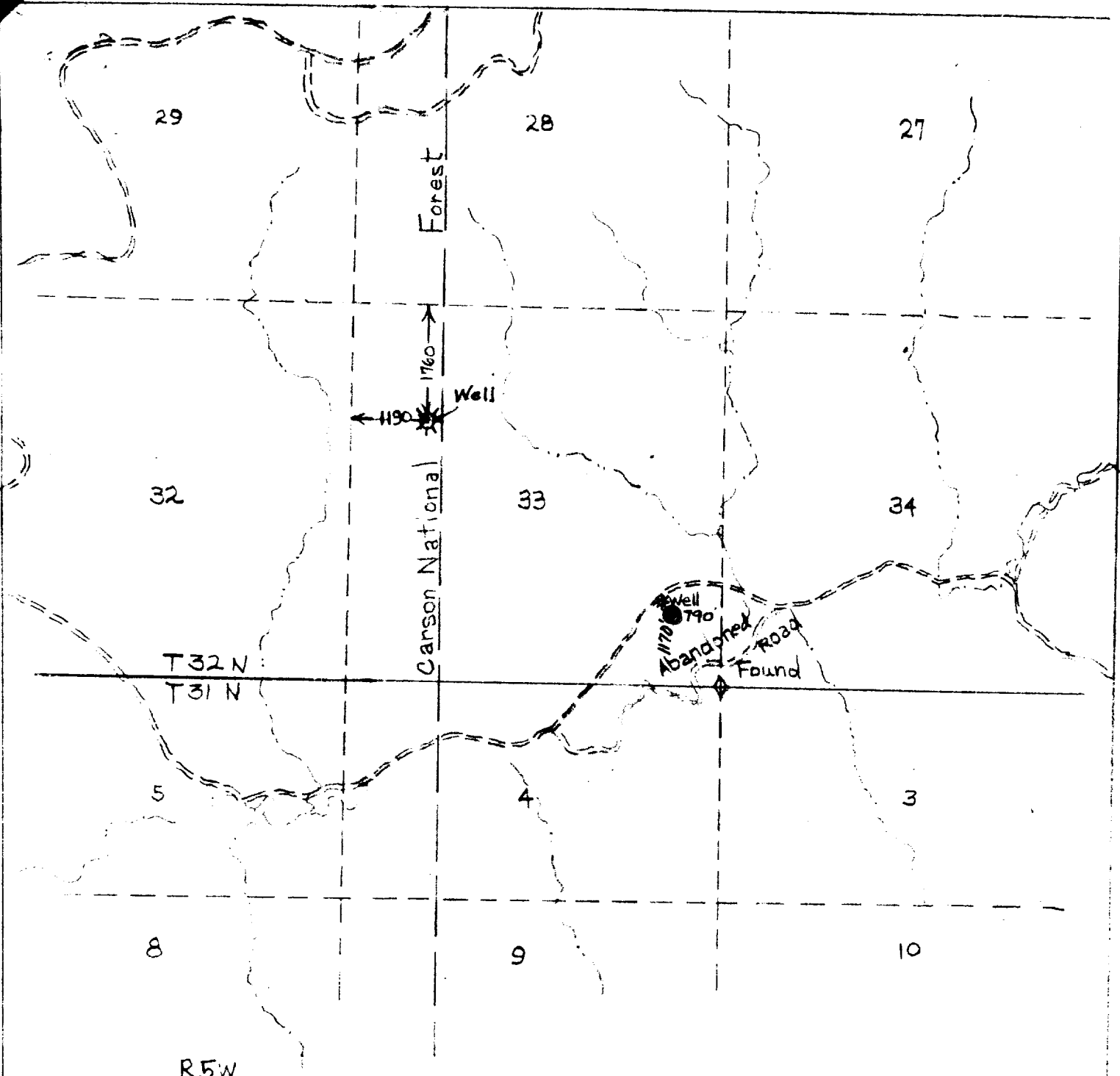
I hereby certify that the information contained herein is true and complete to the best of my knowledge and belief.

Name  
**JOHN E. SCHALK**  
Position  
**AGENT**  
Company  
**LONE STAR INDUSTRIES, INC.**  
Date  
**MAY 29, 1974**

I hereby certify that the well location shown on this plat was plotted from field notes of actual surveys made by me or under my supervision, and that the same is true and correct to the best of my knowledge and belief.

Date Surveyed  
**23**  
**JAMES P. LEESE**  
Registered Professional Engineer  
and/or Land Surveyor  
**1963**  
NEW MEXICO  
Certificate No. **JAMES P. LEESE**

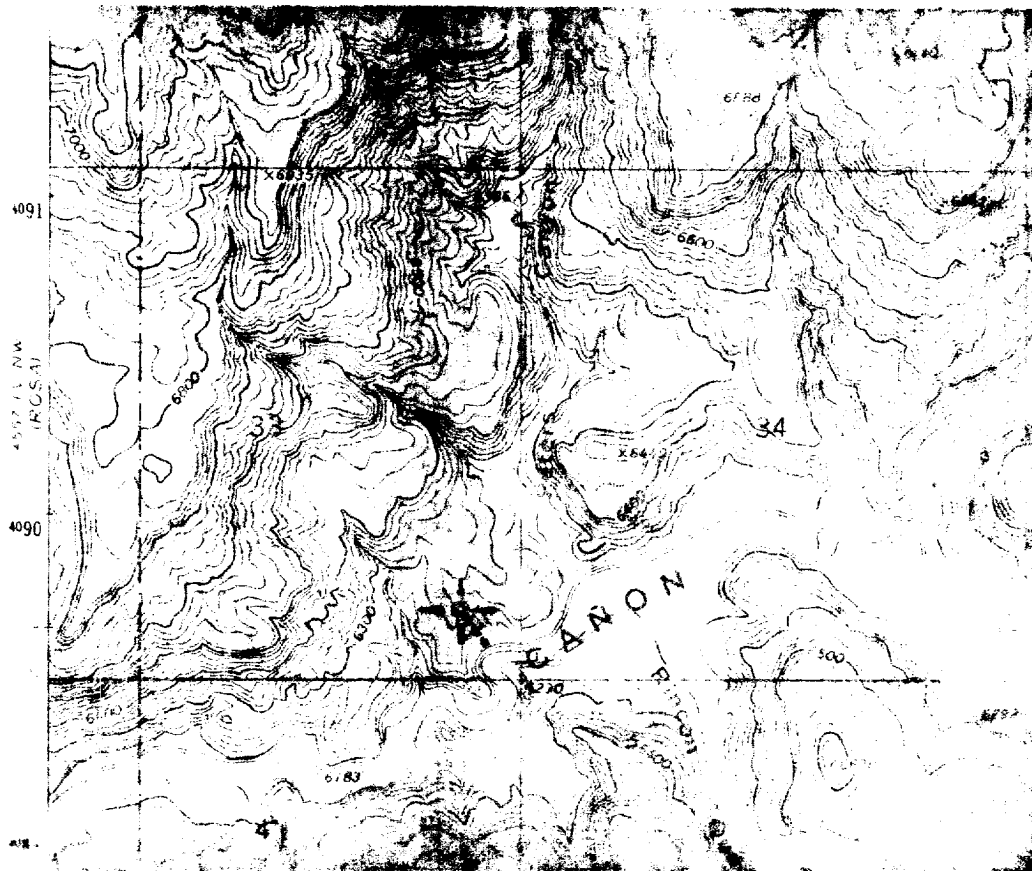
0 330 660 990 1320 1650 1980 2310 2640 2970 3300 3630 3960 4290 4620 4950 5280 5610 5940 6270 6600



VICINITY MAP FOR  
**JOHN C. SCHALK**

SHOWING

Well Location in SE/4 SE/4 of  
Sec. 33, T32N, R5W, N.M.P.M.  
Rio Arriba County, New Mexico  
SCALE: 1"=2000' DATE: 5-25-74



Proposed Road;  
 app. 1/2 mile long  
 14 feet wide

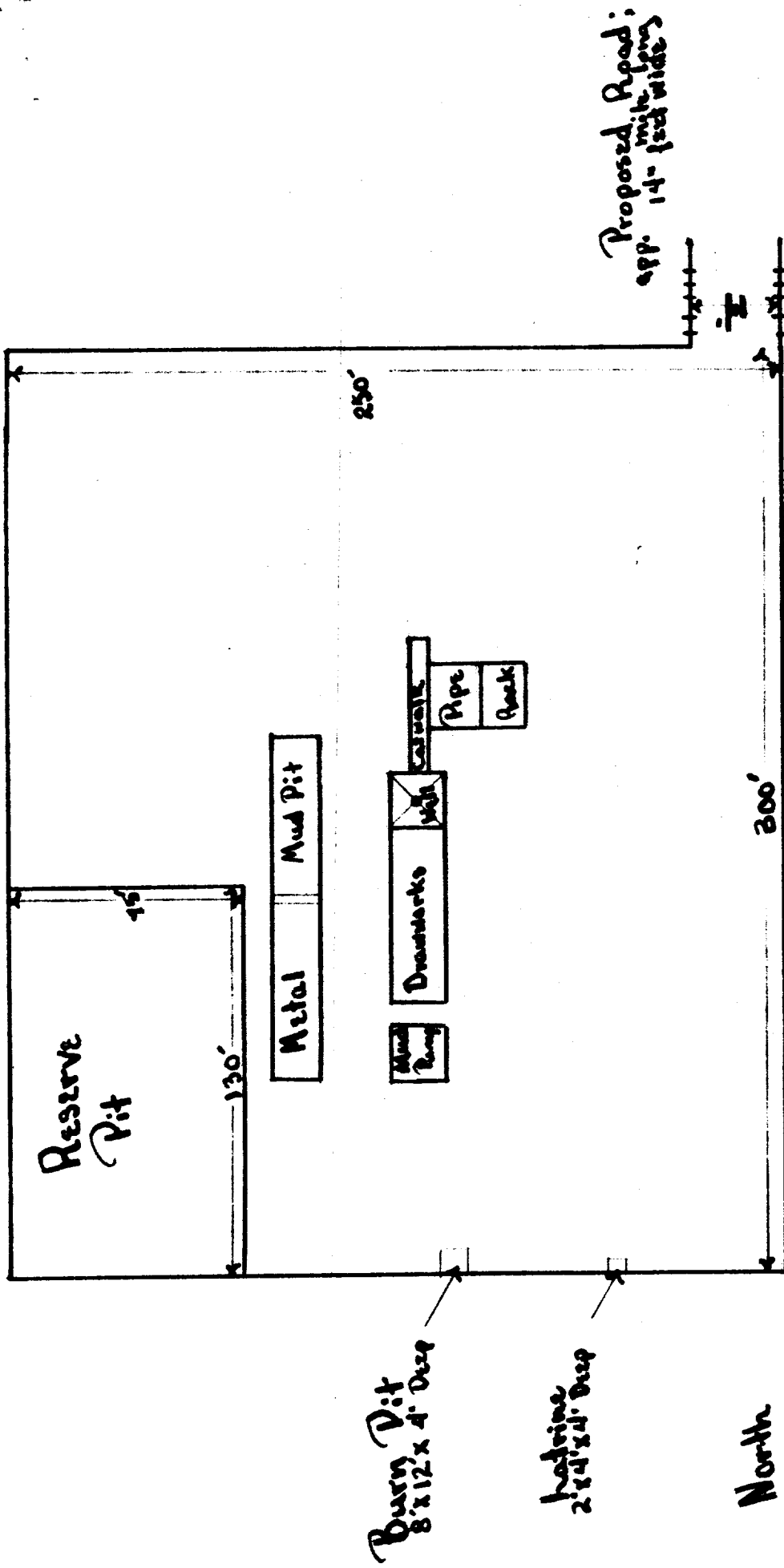
John E. Schalk

Home Star Industries 62-3

Sec. 33, T32N, R5W

Scale

1 Mile



Lone Star Industries  
 Schalk 62#3  
 Sec. 33, T32N, R5W