

NO. OF COPIES RECEIVED	6
DISTRIBUTION	
ANTA FE	1
FILE	
U.S.G.S.	2
LAND OFFICE	
OPERATOR	2

NEW MEXICO OIL CONSERVATION COMMISSION

38-039-22135
Form C-101
Revised 1-1-65

5A. Indicate Type of Lease
STATE ☐ FEE ☒
5. State Oil & Gas Lease No.

APPLICATION FOR PERMIT TO DRILL, DEEPEN, OR PLUG BACK

1a. Type of Work
b. Type of Well
OIL WELL ☒ GAS WELL ☐ OTHER ☐
DRILL ☒ DEEPEN ☐ PLUG BACK ☐
SINGLE ZONE ☐ MULTIPLE ZONE ☐

2. Name of Operator
3. Address of Operator
Hanson Oil Corporation
P. O. Box 1515, Roswell, New Mexico 88201

4. Location of Well
UNIT LETTER LOCATED FEET FROM THE LINE
9045' Bearing S. 44°25'05" E. of Milepost 202+5.10 on
the Colorado-N. Mexico boundary.
TWP. RGE. NMPM

7. Unit Agreement Name
8. Farm or Lease Name
Quinlan Ranches
9. Well No.
Chama Butte #1
10. Field and Pool, or Wildcat
Wildcat-ENTRADA
12. County
Rio Arriba

19. Proposed Depth
3500
19A. Formation
Entrada
20. Rotary or C.T.
Rotary
21. Elevations (Show whether DF, RT, etc.)
8705
21A. Kind & Status Plug. Bond
State Wide
21B. Drilling Contractor
Castle Drilling Company
22. Approx. Date Work will start
August 17, 1979

PROPOSED CASING AND CEMENT PROGRAM

SIZE OF HOLE	SIZE OF CASING	WEIGHT PER FOOT	SETTING DEPTH	SACKS OF CEMENT	EST. TOP
12-1/4"	8-5/8"	24#	500	400	Circ.
7-7/8"	5-1/2"	15.5#	3500	350	2000

It is proposed to drill the above captioned well to a depth of 3500' or a depth sufficient to test the Entrada formation. If tests warrant the well will be cased, stimulated and completed as conditions warrant. BOP will be used during drilling and completion operation

APPROVED BY
FOR STATE USE
11-13-79



IN ABOVE SPACE DESCRIBE PROPOSED PROGRAM: IF PROPOSAL IS TO DEEPEN OR PLUG BACK, GIVE DATA ON PRESENT PRODUCTIVE ZONE AND PROPOSED NEW
TIVE ZONE. GIVE BLOWOUT PREVENTER PROGRAM, IF ANY.

I hereby certify that the information above is true and complete to the best of my knowledge and belief.

Signed Ray Wells Title Vice-President, Land Date August 10, 1979

(This space for State Use)

APPROVED BY AR Dendridge TITLE SUPERVISOR DISTRICT # 3 DATE AUG 15 1979
CONDITIONS OF APPROVAL, IF ANY:

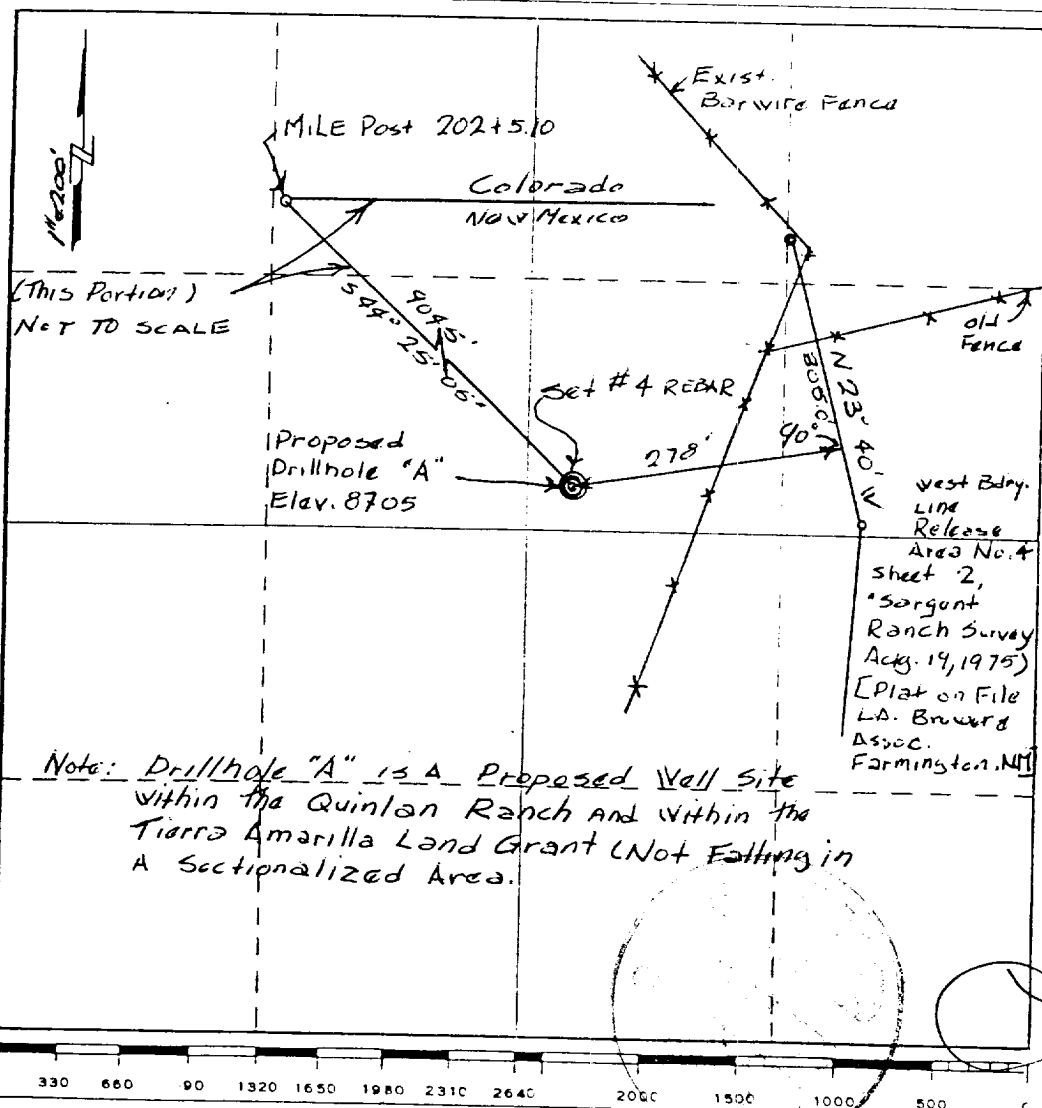
Form. C-102
Supersedes C-128
Effective 1-1-65

All distances must be from the outer boundaries of the Section

1. Outline the acreage dedicated to the subject well by colored pencil or hachure marks on the plat below.
2. If more than one lease is dedicated to the well, outline each and identify the ownership thereof (both as to working interest and royalty).
3. If more than one lease of different ownership is dedicated to the well, have the interests of all owners been consolidated by communitization, unitization, force-pooling, etc?

☐ Yes ☐ No If answer is "yes," type of consolidation _____

No allowable will be assigned to the well until all interests have been consolidated (by communitization, unitization, forced-pooling, or otherwise) or until a non-standard unit, eliminating such interests, has been approved by the Commission.



I hereby certify that the information contained herein is true and complete to the best of my knowledge and belief.

Name *Ray Willis*
Position *V.P. Land*
Company *Hanson Oil Corp.*
Date *8-15-79*

I hereby certify that the well location shown on this plot was plotted from field notes of actual surveys made by me or under my supervision, and that the same is true and correct to the best of my knowledge and belief.

Date Surveyed
Aug. 13, 1979
Registered Professional Engineer
and/or Land Surveyor

Certificate No.

3122