

UNITED STATES
DEPARTMENT OF THE INTERIOR
BUREAU OF LAND MANAGEMENT

APPLICATION FOR PERMIT TO DRILL OR DEEPEN

1A. TYPE OF WORK

DRILL ☐

DEEPEN ☒ RE-ENTRY ☒

B. TYPE OF WELL

OIL
WELL ☐

GAS
WELL ☒

OTHER ☐

SINGLE
ZONE ☒

MULTIPLE
ZONE ☐

2. NAME OF OPERATOR

VASTAR RESOURCES, INC.

3. ADDRESS AND TELEPHONE NO.

1816 E. MOJAVE, FARMINGTON NM 87401 (505) 599-4300

4. LOCATION OF WELL (Report location clearly and in accordance with any State requirements)

A: Surface

1525' FSL & 1540' FWL

A: proposed prod. zone

SAME

14. DISTANCE IN MILES AND DIRECTION FROM NEAREST TOWN OR POST OFFICE*

42.5 MILES EAST-NORTHEAST OF BLOOMFIELD NM

15. DISTANCE FROM PROPOSED*

LOCATION TO NEAREST

PROPERTY OR LEASE LINE, FT.

(Also to nearest drig. unit line, if any)

1525'

18. NO. OF ACRES IN LEASE

2525.47

19. PROPOSED DEPTH

4150'

21. ELEVATIONS (Show whether DF, RT, GR, etc.)

7263' GL, 7275' KB

5. LEASE DESIGNATION AND SERIAL NO.

NM 28277

6. IF INDIAN, ALLOTTEE OR TRIBE NAME

7. UNIT AGREEMENT NAME

8. FARM OR LEASE NAME, WELL NO.
ARBOLES 29A #1

9. AP WELL NO.

30-039-23272

10. FIELD AND POOL, OR WILDCAT
BASIN FRUITLAND COAL

12. SEC., T., R., M., OR BLK.
AND SURVEY OR AREA

SEC. 29, T-32N, R-4W

12. COUNTY OR PARISH

RIO ARRIBA

13. STATE

NM

JUL 2000

RECEIVED
OIL CON. DIV
DIST. 3

This action is subject to technical and procedural review pursuant to 43 CFR 3165.3 and appeal pursuant to 43 CFR 3165.7.

PROPOSED CASING AND CEMENTING PROGRAM

DRILLING OPERATIONS AUTHORIZED ARE
SUBJECT TO COMPLIANCE WITH ATTACHED
GENERAL REQUIREMENTS

EXISTING		PROPOSED	SIZE OF HOLES	WEIGHT PER FOOT	SETTING DEPTH	CEMENT
12-1/4"		9-5/8"	36#	175'	125 sx (130cf) Circ to Surf	
7-7/8"		5-1/2"	17#	3992'	300 sx (376cf) TOC @ 2382'	
4-3/4"		4" (liner)	11#	3861'-4078'	5 sx	
4-3/4"		4" tieback	11# FJ Hydril	3861'	97 sx (192 cu. ft.) circ. to surf.	

Re-entry of the plugged Arboles 29 A #1 is proposed as follows:

1. Dig out around casing stubs, weld on extensions & bradenhead, packoff 5-1/2" with slips & install tubing head.
2. Drill out surface cement plug to 225' with 4-3/4" fishtail bit and 3-1/8" drill collars on 2-7/8" workstring.
3. Drill out cement plug from 2180' to 2330' (cement retainer at 2271') and cement plug from 3280' to top of liner at 3861' (cement retainer at 3818'). Use milltooth bit or mill to drill through cement retainers.
4. Drill out cement in 4" 11# J-55 Hydril Flush Joint liner and cleanout to 4060'.
5. Pressure test to verify old perfs 4010'-4036' are squeezed off.
6. Run 4" 11# Hydril Flush Joint casing to top of existing 4" 11# liner at 3861' and cement back to surface with 97 sx (192.25 cu. ft.) 35:65 Class B poz + 5#/sx Gilsonite + 1/4#/sx CF (1.99 yield with 15% excess).
7. WOC 24 hours and drill out float collar and excess cmt in 4" and clean out to PBTD of 4060'.
8. Spot 500 gal 10% Formic acid at 4040'.
9. Perforate Fruitland Coal interval 4013'-4040' with 4 SPF.
10. Breakdown, frac, run production tubing, and flow test Fruitland Coal.

IN ABOVE SPACE DESCRIBE PROPOSED PROGRAM: If proposal is to deepen, give data on present productive zone and proposed new productive zone. If proposal is to drill or deepen directionally, give pertinent data on subsurface locations and measured and true vertical depths. Give blowout preventer program, if any.

24.

SIGNED

Charles W. Knight, Jr.

TITLE

ENGINEER

DATE

6/14/00

(This space for Federal or State office use)

PERMIT NO.

APPROVAL DATE

Application approval does not warrant or certify that the applicant holds legal or equitable title to those rights in the subject lease which would entitle the applicant to conduct operations thereunder.

CONDITIONS OF APPROVAL, IF ANY:

/s/ Jim Lovato

APPROVED BY

TITLE

DATE

JUL 11 2000

*See Instructions On Reverse Side

W MEXICO OIL CONSERVATION COMMI JN
WELL LOCATION AND ACREAGE DEDICATION PLAT

Form C-102
Supersedes C-128
Effective 1-1-65

All distances must be from the outer boundaries of the Section.

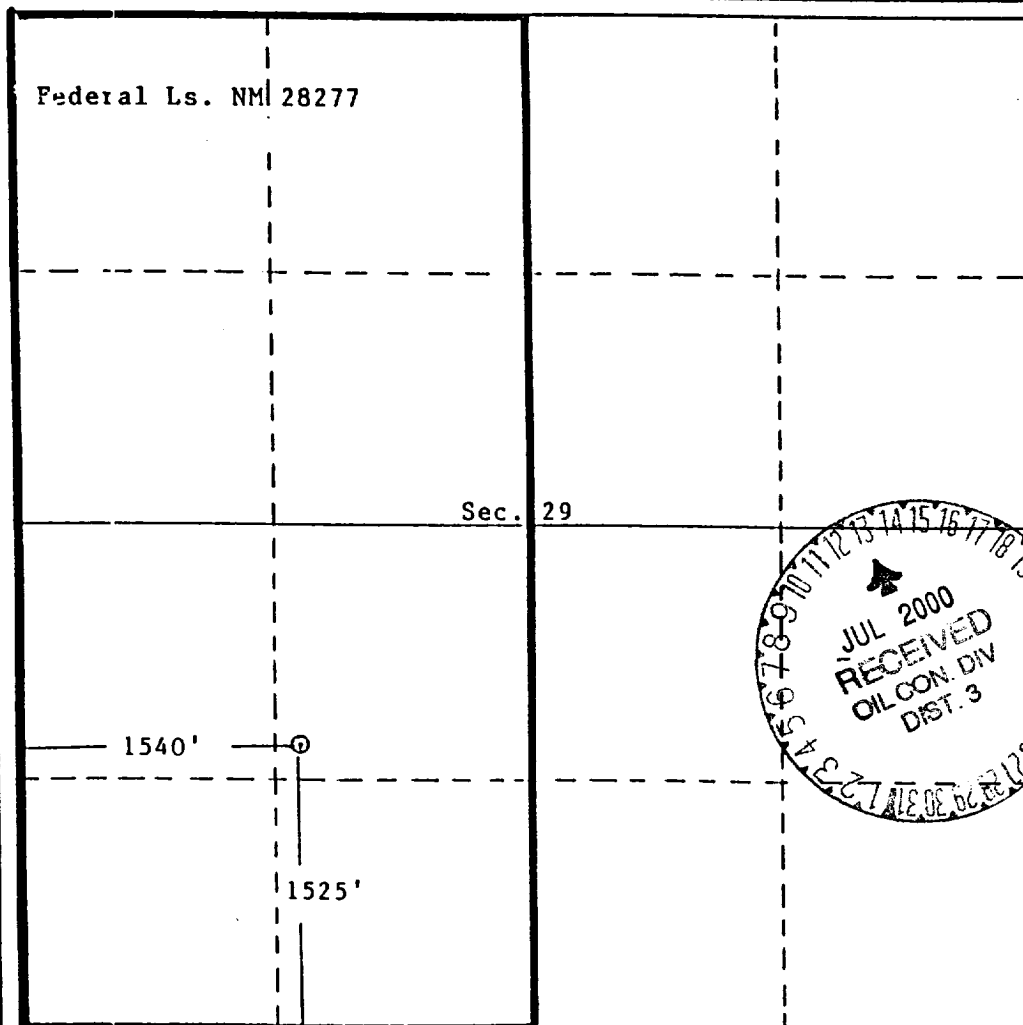
Operator Vastar Resources, Inc.			Lease Arboles 29A		Well No. 1
Unit Letter K	Section 29	Township 32N	Range 4W	County Rio Arriba	
Actual Footage Location of Well; 1525 feet from the South line and 1540 feet from the West line					
Ground Level Elev. 7263	Producing Formation Fruitland		Pool 71629 Basin Fruitland Coal	Dedicated Acreage 320.0 <i>W</i> Acres	

- Outline the acreage dedicated to the subject well by colored pencil or hatchure marks on the plat below.
- If more than one lease is dedicated to the well, outline each and identify the ownership thereof (both as to working interest and royalty). **N/A**
- If more than one lease of different ownership is dedicated to the well, have the interests of all owners been consolidated by communitization, unitization, force-pooling, etc? **NA**

☐ Yes ☐ No If answer is "yes," type of consolidation _____

If answer is "no," list the owners and tract descriptions which have actually been consolidated. (Use reverse side of this form if necessary.) _____

No allowable will be assigned to the well until all interests have been consolidated (by communitization, unitization, forced-pooling, or otherwise) or until a non-standard unit, eliminating such interests, has been approved by the Commission.



CERTIFICATION

I hereby certify that the information contained herein is true and complete to the best of my knowledge and belief.

Charles W. Knight, Jr.

Name
Charles W. Knight, Jr.

Position
Engineer

Company
Vastar Resources, Inc.

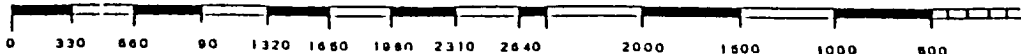
Date
June 9, 2000

I hereby certify that the well location shown on this plat was plotted from field notes of actual surveys made by me or under my supervision, and that the same is true and correct to the best of my knowledge and belief.

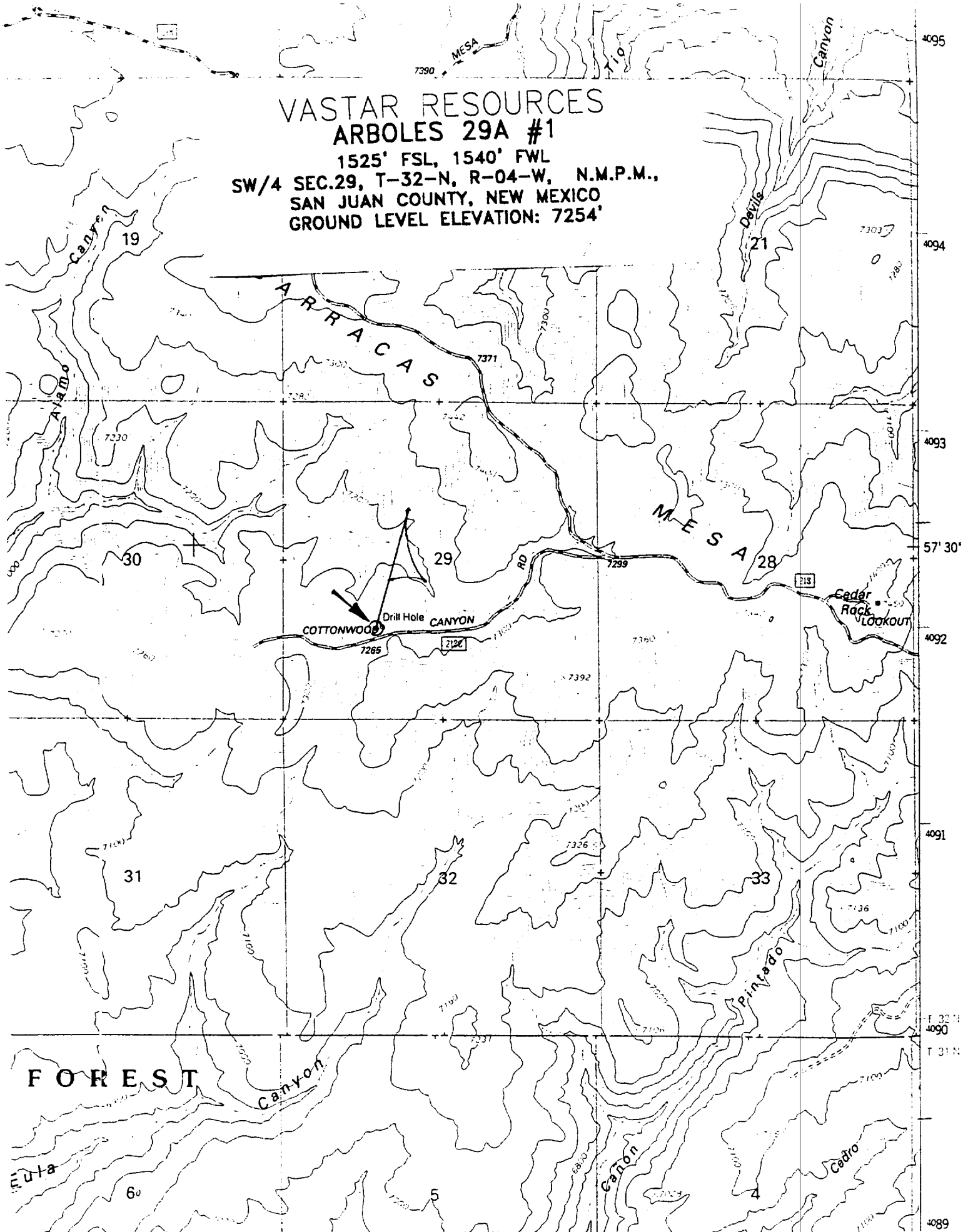
Date Surveyed
6/10/83

Registered Professional Engineer
and/or Land Surveyor
Originally surveyed by
Fred B. Kerr Jr.

Certificate No.
3950



VASTAR RESOURCES
ARBOLES 29A #1
1525' FSL, 1540' FWL
SW/4 SEC.29, T-32-N, R-04-W, N.M.P.M.,
SAN JUAN COUNTY, NEW MEXICO
GROUND LEVEL ELEVATION: 7254'



Vastar Resources, Inc.
Arboles 29 A #1
1525' FSL, 1540' FWL
Sec 29, T32N, R4W
Rio Arriba County, New Mexico

Page 2

2. **FORMATION TOPS:** The tops of geologic markers as follows:

Ojo Alamo	3380'
Kirkland	3504'
Fruitland	3772'

3. **ANTICIPATED DEPTHS OF OIL, GAS, AND WATER:**

Ojo Alamo	3380' - Water
Fruitland	3772' - Gas

All zones capable of oil, gas, or water production are protected with 5 ½" or 4" casing.

4. **BLOWOUT PREVENTOR REQUIREMENTS:**

<u>Interval</u>	<u>Pressure Control Equipment</u>
Surface - 400'	No equipment necessary
400' - TD	10" 2000 psi Double Ram preventor, rotating head and choke manifold.

All BOPE will be hydraulically pressure tested when nipped up, after well control use and every thirty days. Pressure tests will be to the lesser of 2000 psi or to 70% of the minimum internal yield pressure of the casing.

Blind rams will be functioned on each trip out of the hole. All BOPE checks will be noted on the daily drilling reports.

Additional BOPE equipment includes a kelly cock, FO safety valve and an inside BOP.

SEE ATTACHED BOP DIAGRAM