

UNITED STATES
DEPARTMENT OF THE INTERIOR
BUREAU OF LAND MANAGEMENT

APPLICATION FOR PERMIT TO DRILL, DEEPEN, OR PLUG BACK

1a. TYPE OF WORK

DRILL ☒

DEEPEN ☐

PLUG BACK ☐

b. TYPE OF WELL

OIL
WELL ☐

GAS
WELL ☒

OTHER

SINGLE
ZONE ☒

MULTIPLE
ZONE ☐

2. NAME OF OPERATOR

NASSAU RESOURCES, INC.

3. ADDRESS OF OPERATOR

P.O. Box 809, Farmington, N.M. 87499

4. LOCATION OF WELL (Report location clearly and in accordance with any State requirements.)*

At surface

970' FSL - 1580' FWL

At proposed prod. zone

14. DISTANCE IN MILES AND DIRECTION FROM NEAREST TOWN OR POST OFFICE*

30 mi. N of Gobernador, NM

15. DISTANCE FROM PROPOSED*

LOCATION TO NEAREST
PROPERTY OR LEASE LINE, FT.
(Also to nearest drlg. unit line, if any)

970'

16. NO. OF ACRES IN LEASE

480.0

17. NO. OF ACRES ASSIGNED
TO THIS WELL

160

18. DISTANCE FROM PROPOSED LOCATION*
TO NEAREST WELL, DRILLING, COMPLETED,
OR APPLIED FOR, ON THIS LEASE, FT.

1/2 mi. S

19. PROPOSED DEPTH

3680

20. ROTARY OR CABLE TOOLS

Rotary

21. ELEVATIONS (Show whether DF, RT, GR, etc.)

6841' GL; 6853' KEDRILLING OPERATIONS AUTHORIZED ARE

22. APPROX. DATE WORK WILL START*

July 1988

23. SUBJECT TO COMPLIANCE WITH ATTACHED

PROPOSED CASING AND CEMENTING PROGRAM
"GENERAL REQUIREMENTS"

This action is subject to technical and
procedural review pursuant to 43 CFR 3165.3
and appeal pursuant to 43 CFR 3165.4.

SIZE OF HOLE	SIZE OF CASING	WEIGHT PER FOOT	SETTING DEPTH	
12-1/4"	9-5/8"	36#	250'	150 cu.ft. circ. to surf.
7-7/8"	5-1/2"	15.5#	3680'	797 cu.ft. circ. to surf.

Plan to drill with spud mud to set 250' of surface casing. Will then drill with water and gel-chem. mud to test the Fruitland coal zone at $\pm 3680'$. Will run DIL-GR-SP and FDC-CNL-GR-Caliper logs. If well appears productive, will set 5-1/2" casing at TD, cement in 1 stage, selectively perforate, frac, clean out after frac and complete with 2-7/8" tubing.

GAS IS NOT DEDICATED.

IN ABOVE SPACE DESCRIBE PROPOSED PROGRAM: If proposal is to deepen or plug back, give data on present productive zone and proposed new productive zone. If proposal is to drill or deepen directionally, give pertinent data on subsurface locations and measured and true vertical depths. Give blowout prevention program, if any.

24.

SIGNED

James S. Hazen

TITLE Field Supt.

DATE 5/23/88

(This space for Federal or State office use)

PERMIT NO.

APPROVAL DATE

APPROVED BY

CONDITIONS OF APPROVAL, IF ANY:

TITLE

DATE

NMOCC

*See Instructions On Reverse Side

OIL CONSERVATION DIVISION

STATE OF NEW MEXICO
ENERGY AND MINERALS DEPARTMENTP. O. BOX 2088
SANTA FE, NEW MEXICO 87501Form C-102
Revised 10-1-78

All distances must be from the outer boundaries of the Section.

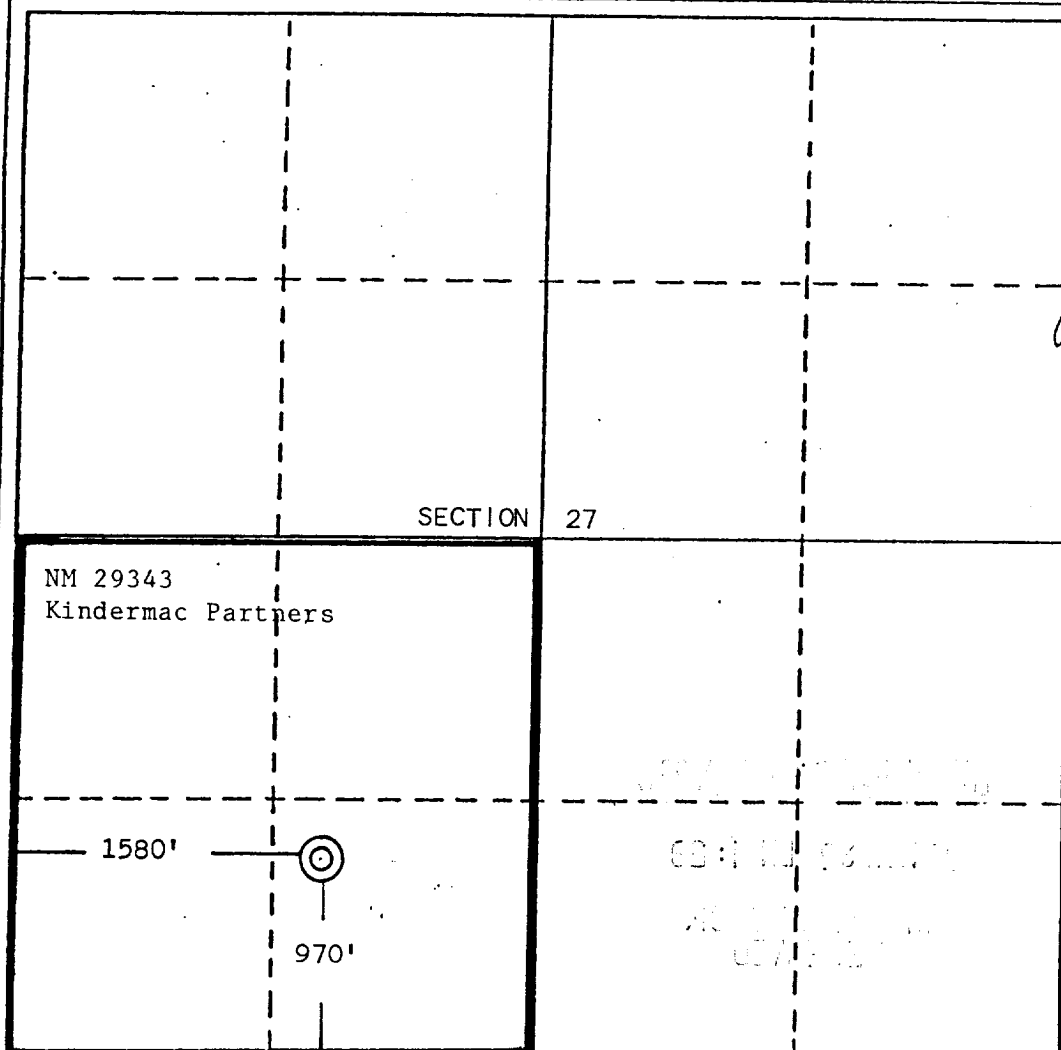
Operator Nassau Resources, Inc.			Lease Carracas Unit 27 A		Well No. 14
Unit Letter N	Section 27	Township 32 North	Range 5 West	County Rio Arriba	
Actual Footage Location of Well: 970 feet from the South line and 1580 feet from the West line					
Ground Level Elev. 6841	Producing Formation Fruitland <i>comp</i>		Pool WC Fruitland	Dedicated Acreage: 160.0 Acres	

1. Outline the acreage dedicated to the subject well by colored pencil or hachure marks on the plat below.
2. If more than one lease is dedicated to the well, outline each and identify the ownership thereof (both as to working interest and royalty).
3. If more than one lease of different ownership is dedicated to the well, have the interests of all owners been consolidated by communitization, unitization, force-pooling, etc?

☒ Yes ☐ No If answer is "yes," type of consolidation Unitization - Carracas Unit

If answer is "no," list the owners and tract descriptions which have actually been consolidated. (Use reverse side of this form if necessary.) _____

No allowable will be assigned to the well until all interests have been consolidated (by communitization, unitization, forced-pooling, or otherwise) or until a non-standard unit, eliminating such interests, has been approved by the Division.



CERTIFICATION

I hereby certify that the information contained herein is true and complete to the best of my knowledge and belief.

Name
James S. Hazen

Position
Field Supt.

Company
Nassau Resources, Inc.

Date
5/23/88

I hereby certify that the well location shown on this plat is from field notes of the well owner or under my supervision, and that the same is true and correct to the best of my knowledge and belief.

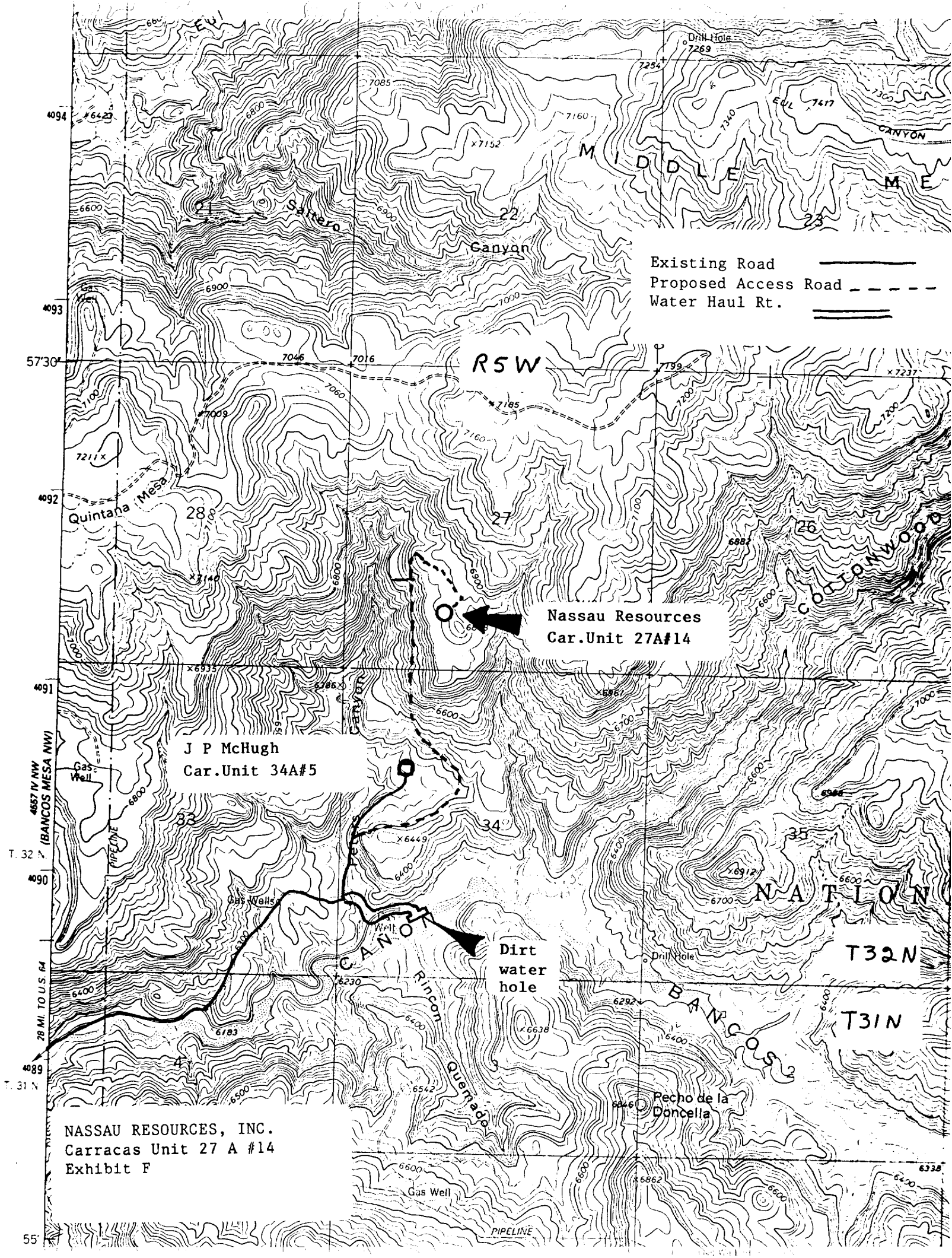
Date Surveyed
April 26, 1988

Registered Professional Engineer
and/or Land Surveyor

Edgar L. Risenhoover

Certificate No. 5979

Edgar L. Risenhoover, L.S.



Existing Road —————
Proposed Access Road - - - - -
Water Haul Rt. = = = = =

Nassau Resources
Car. Unit 27A#14

J P McHugh
Car. Unit 34A#5

Dirt
water
hole

NASSAU RESOURCES, INC.
Carracas Unit 27 A #14
Exhibit F