

Form 3160-3
(November 1982)
(formerly 9-331C)UNITED STATES
DEPARTMENT OF THE INTERIOR
BUREAU OF LAND MANAGEMENT

APPLICATION FOR PERMIT TO DRILL, DEEPEN, OR PLUG BACK

1a. TYPE OF WORK

DRILL ☒DEEPEN ☐PLUG BACK ☒

b. TYPE OF WELL

OIL
WELL ☐GAS
WELL ☒

OTHER

SINGLE
ZONE ☒MULTIPLE
ZONE ☐

2. NAME OF OPERATOR

NASSAU RESOURCES, INC.

3. ADDRESS OF OPERATOR

P.O. BOX 809, Farmington, N.M. 87499

4. LOCATION OF WELL (Report location clearly and in accordance with any State requirements.)

At surface

790' FSL - 900' FWL

At proposed prod. zone

14. DISTANCE IN MILES AND DIRECTION FROM NEAREST TOWN OR POST OFFICE*

Approx. 33 miles N. of Gobernador N.M.

15. DISTANCE FROM PROPOSED*

LOCATION TO NEAREST
PROPERTY OR LEASE LINE, FT.
(Also to nearest drilg. unit line, if any)

790'

16. NO. OF ACRES IN LEASE

2,482.20

17. NO. OF ACRES ASSIGNED
TO THIS WELL

149.99

18. DISTANCE FROM PROPOSED LOCATION*

TO NEAREST WELL, DRILLING, COMPLETED,
OR APPLIED FOR, ON THIS LEASE, FT.

1 1/2 mi. SE

19. PROPOSED DEPTH

4190'

20. ROTARY OR CABLE TOOLS

Rotary

21. ELEVATIONS (Show whether DF, RT, GR, etc.)

7420' GL; 7432' KB

22. APPROX. DATE WORK WILL START*

July 1988

23.

This action is subject to technical and
procedural review pursuant to 43 CFR 3105.3
and appeal pursuant to 43 CFR 3105.4

PROPOSED DRILLING PROGRAM

DRILLING OPERATIONS AUTHORIZED ARE

SUBJECT TO COMPLIANCE WITH ATTACHED

"GENERAL REQUIREMENTS"

150 cu.ft. circ. to surface

904 cu.ft. circ. to surface

SIZE OF HOLE	SIZE OF CASING	WEIGHT PER FOOT	SETTING DEPTH
12-1/4"	9-5/8"	36#	250'
7-7/8"	5-1/2"	15.5#	4190'

Plan to drill with spud mud to set 250' of surface casing. Will then drill with water and gel-chem. mud to test the Fruitland coal zone at \pm 4190'. Will run DIL-GR-SP and FDC-CNL-GR Caliper logs. If well appears productive, will set 5-1/2" casing at TD, cement in 1 stage, selectively perforate, frac, clean out after frac and complete with 2-7/8" tubing.

GAS IS NOT DEDICATED.

RECEIVED

AUG 29 1988

OIL CON. DIV
DIST. 3

IN ABOVE SPACE DESCRIBE PROPOSED PROGRAM: If proposal is to deepen or plug back, give data on present productive zone and proposed new productive zone. If proposal is to drill or deepen directionally, give pertinent data on subsurface locations and measured and true vertical depths. Give blowout preventer program, if any.

24.

SIGNED

James S. Hazen

TITLE

Field Supt.

DATE

6/15/88

(This space for Federal or State office use)

PERMIT NO.

APPROVAL DATE

APPROVED BY

TITLE

CONDITIONS OF APPROVAL, IF ANY:

APPROVED

AS AMENDED

AUG 25 1988

J. Ser
AREA MANAGER

NMOCC

*See Instructions On Reverse Side

All distances must be from the outer boundaries of the Section.

Operator Nassau Resources, Inc.			Lease Carracas Unit 18-B		Well No. 13
Unit Letter M	Section 18	Township 32 North	Range 4 West	County Rio Arriba	
Actual Footage Location of Well: 790 feet from the SOUTH line and 900 feet from the WEST line					
Ground Level Elev. 7420	Producing Formation Fruitland COAL	Pool WC Fruitland	Dedicated Acreage: 149.99 Acres		

1. Outline the acreage dedicated to the subject well by colored pencil or hachure marks on the plat below.
2. If more than one lease is dedicated to the well, outline each and identify the ownership thereof (both as to working interest and royalty).
3. If more than one lease of different ownership is dedicated to the well, have the interests of all owners been consolidated by communitization, unitization, force-pooling, etc?

☒ Yes ☐ No If answer is "yes," type of consolidation Unitization - Carracas Unit

If answer is "no," list the owners and tract descriptions which have actually been consolidated. (Use reverse side of this form if necessary.)

No allowable will be assigned to the well until all interests have been consolidated (by communitization, unitization, forced-pooling, or otherwise) or until a non-standard unit, eliminating such interests, has been approved by the Division.

<p>RECEIVED AUG 29 1988 OIL CON. DIV DIST. 3</p>	
SECTION 18	
<p>NM 30015 Kindermac Partners 100%</p>	
<p>900' - 790'</p>	

CERTIFICATION

I hereby certify that the information contained herein is true and complete to the best of my knowledge and belief.

Name
James S. Hazen
Position
Field Supt.
Company
Nassau Resources, Inc.
Date
6/15/88

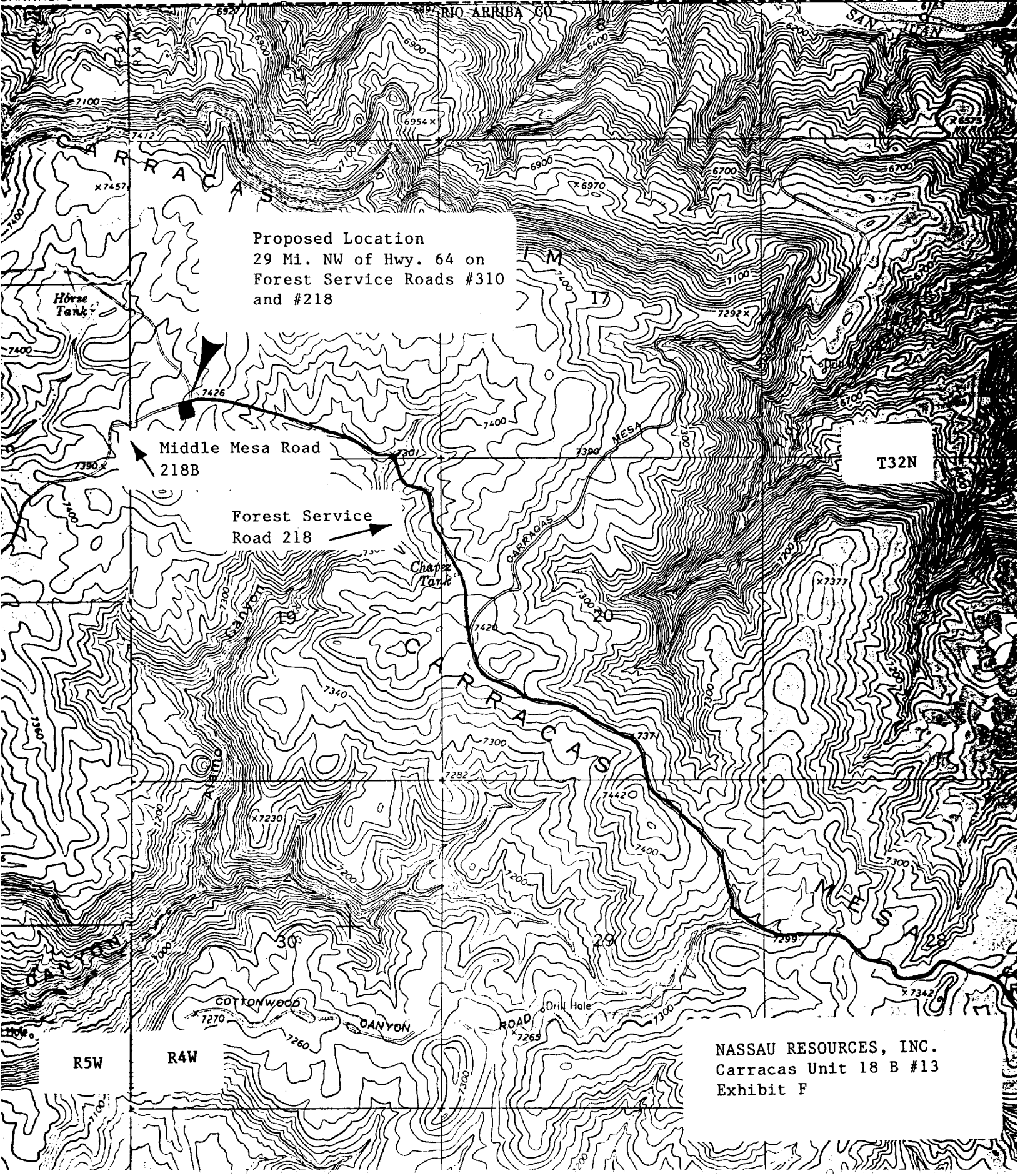
I hereby certify that the location shown on this plat was determined from field notes of actual survey made by me or under my supervision, and that the same is true and correct to the best of my knowledge and belief.

Date Surveyed
5-19-88
Registered Professional Engineer
and/or Land Surveyor

Edgar L. Risenhoover
Certificate No. 5979
Edgar L. Risenhoover, L.S.

BANCOS MESA QUAD
NEW MEXICO
7.5 MINUTE SERIES (TOPO)

4558 111 SE CARRACAS 295 234 17'30" ARCHULETA CO 233 200 000 FEET 298' 232 299



Proposed Location
29 Mi. NW of Hwy. 64 on
Forest Service Roads #310
and #218

Middle Mesa Road
218B

Forest Service
Road 218

T32N

NASSAU RESOURCES, INC.
Carracas Unit 18 B #13
Exhibit F