

6 BLM

1 DE

1 File

1 FS

30-139-24348

Form 3160-3
(November 1983)
(formerly 9-331C)

SUBMIT IN TRIPLICATE*

(Other instructions on
reverse side)

Form approved.

Budget Bureau No. 1004-0136

Expires August 31, 1985

UNITED STATES
DEPARTMENT OF THE INTERIOR
BUREAU OF LAND MANAGEMENT

APPLICATION FOR PERMIT TO DRILL, DEEPEN, OR PLUG BACK

1A. TYPE OF WORK

DRILL ☒DEEPEN ☐PLUG BACK ☐

B. TYPE OF WELL

OIL
WELL ☐GAS
WELL ☒

OTHER

SINGLE
ZONE ☒MULTIPLE
ZONE ☐

2. NAME OF OPERATOR

NASSAU RESOURCES, INC.

3. ADDRESS OF OPERATOR

P. O. Box 809, Farmington, N.M. 87499

4. LOCATION OF WELL (Report location clearly and in accordance with any State requirements.)*

At surface

1800' FSL - 970' FEL
At proposed prod. zone

14. DISTANCE IN MILES AND DIRECTION FROM NEAREST TOWN OR POST OFFICE*

± 30 miles N. of Gobernador

15. DISTANCE FROM PROPOSED*

LOCATION TO NEAREST
PROPERTY OR LEASE LINE, FT.
(Also to nearest drig. unit line, if any) 970'

16. NO. OF ACRES IN LEASE

1,920.0

17. NO. OF ACRES ASSIGNED
TO THIS WELL

160.0

18. DISTANCE FROM PROPOSED LOCATION*
TO NEAREST WELL, DRILLING, COMPLETED,
OR APPLIED FOR, ON THIS LEASE, FT.

1-1/2 miles

19. PROPOSED DEPTH

3965'

20. ROTARY OR CABLE TOOLS

Rotary

21. ELEVATIONS (Show whether DF, RT, GR, etc.) THIS action is subject to technical and
procedural review pursuant to 43 CFR 3165.3
and appeal pursuant to 43 CFR 3165.4.

7195' GL; 7207' KB

23. PROPOSED CASING AND CEMENTING PROGRAM

22. APPROX. DATE WORK WILL START*

9/88

DRILLING OPERATIONS AUTHORIZED ARE
SUBJECT TO COMPLIANCE WITH ATTACHED
"GENERAL REQUIREMENTS"

SIZE OF HOLE	SIZE OF CASING	WEIGHT PER FOOT	SETTING DEPTH	
12-1/4"	9-5/8"	36#	250'	150 cu.ft. circ. to surface.
7-7/8"	5-1/2"	15.5#	3965'	862 cu.ft. circ. to surface.

Plan to drill with spud mud to set 250' of surface casing. Will then drill with water and gel-chem. mud to test the Fruitland coal zone at ± 3965'. Will run DIL-GR-SP and FDC-CNL-GR Caliper logs. If well appears productive, will set 5-1/2" casing at TD, cement in 1 stage, selectively perforate, frac, clean out after frac and complete with 2-7/8" tubing.

GAS IS NOT DEDICATED.

IN ABOVE SPACE DESCRIBE PROPOSED PROGRAM: If proposal is to deepen or plug back, give data on present productive zone and proposed new productive zone. If proposal is to drill or deepen directionally, give pertinent data on subsurface locations and measured and true vertical depths. Give blowout preventer program, if any.

24.

SIGNED

James J. Hazen

TITLE

Field Supt.

DATE

8/10/88

(This space for Federal or State office use)

PERMIT NO.

APPROVAL DATE

APPROVED BY

TITLE

CONDITIONS OF APPROVAL, IF ANY:

APPROVED KH
AS AMENDED

NOV 18 1988

AREA MANAGER

NMOCG

*See Instructions On Reverse Side

Title 18 U.S.C. Section 1001, makes it a crime for any person knowingly and willfully to make to any department or agency of the United States any false, fictitious or fraudulent statements or representations as to any matter within its jurisdiction.

OIL CONSERVATION DIVISION

STATE OF NEW MEXICO
ENERGY AND MINERALS DEPARTMENTP. O. BOX 2088
SANTA FE, NEW MEXICO 87501Form C-102
Revised 10-1-78

All distances must be from the outer boundaries of the Section.

Operator Nassau Resources, Inc.			Lease Carracas Unit 34 B			Well No. 9		
Unit Letter I	Section 34	Township 32 North	Range 4 West	County Rio Arriba				
Actual Footage Location of Well:								
1800 feet from the South line and		970 feet from the East line						
Ground Level Elev. 7195	Producing Formation Fruitland <i>COAL</i>		Pool <i>BASIN</i> NO Fruitland			Dedicated Acreage: 160.0 Acres		

1. Outline the acreage dedicated to the subject well by colored pencil or hatchure marks on the plat below.
2. If more than one lease is dedicated to the well, outline each and identify the ownership thereof (both as to working interest and royalty).
3. If more than one lease of different ownership is dedicated to the well, have the interests of all owners been consolidated by communitization, unitization, force-pooling, etc?

☒ Yes ☐ No If answer is "yes," type of consolidation Carracas Unit - Unitization

If answer is "no," list the owners and tract descriptions which have actually been consolidated. (Use reverse side of this form if necessary.) _____

No allowable will be assigned to the well until all interests have been consolidated (by communitization, unitization, forced-pooling, or otherwise) or until a non-standard unit, eliminating such interests, has been approved by the Division.

SECTION 34		NM 59696 Amoco Production Co. 100%	
		970'	
		1800'	

CERTIFICATION

I hereby certify that the information contained herein is true and complete to the best of my knowledge and belief.

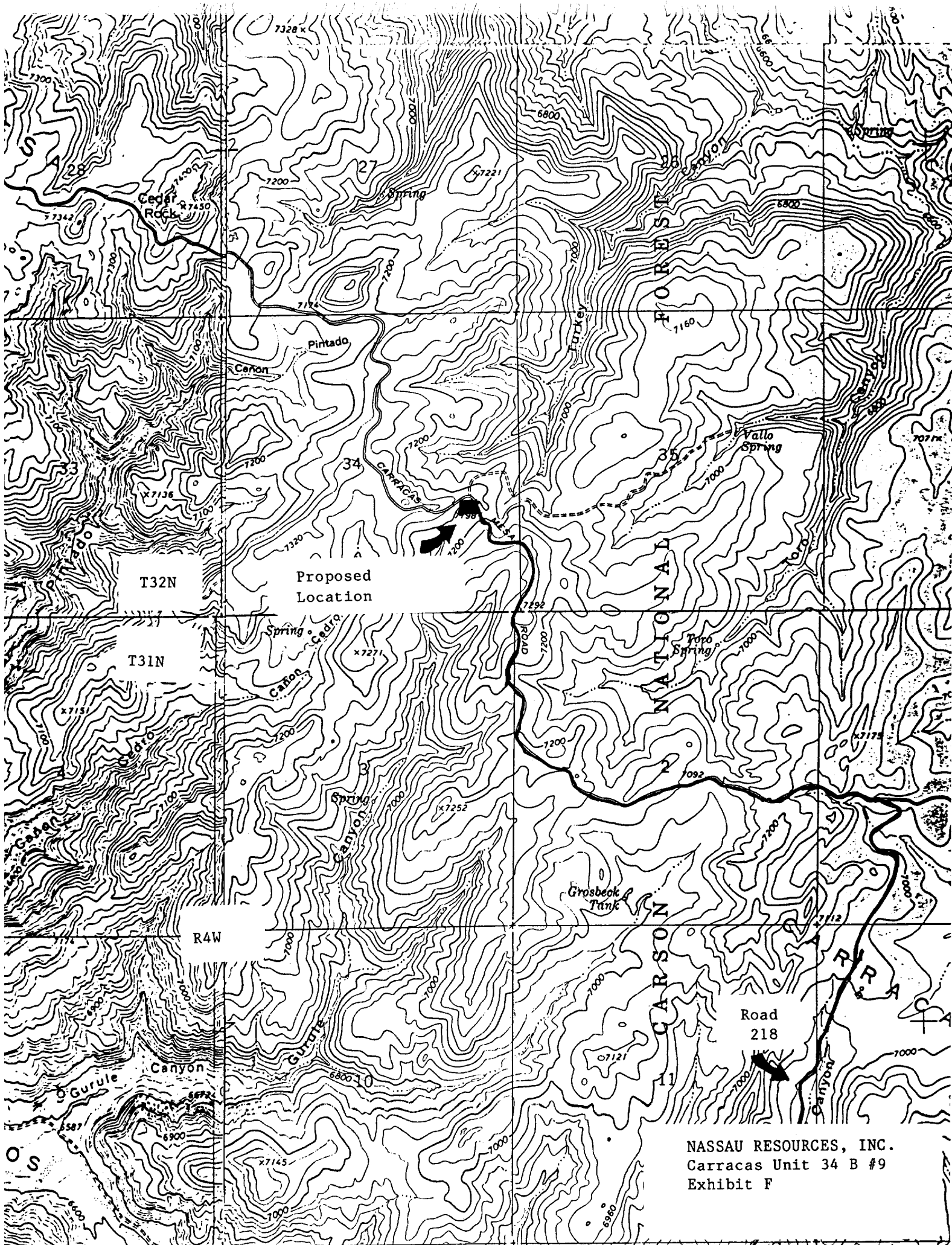
Name
James S. Hazen
Position
Field Supt.
Company
Nassau Resources, Inc.
Date
August 10, 1988

I hereby certify that the well location shown on this plat was obtained from field notes of actual survey by me or under my supervision and that the same is true and correct to the best of my knowledge and belief.

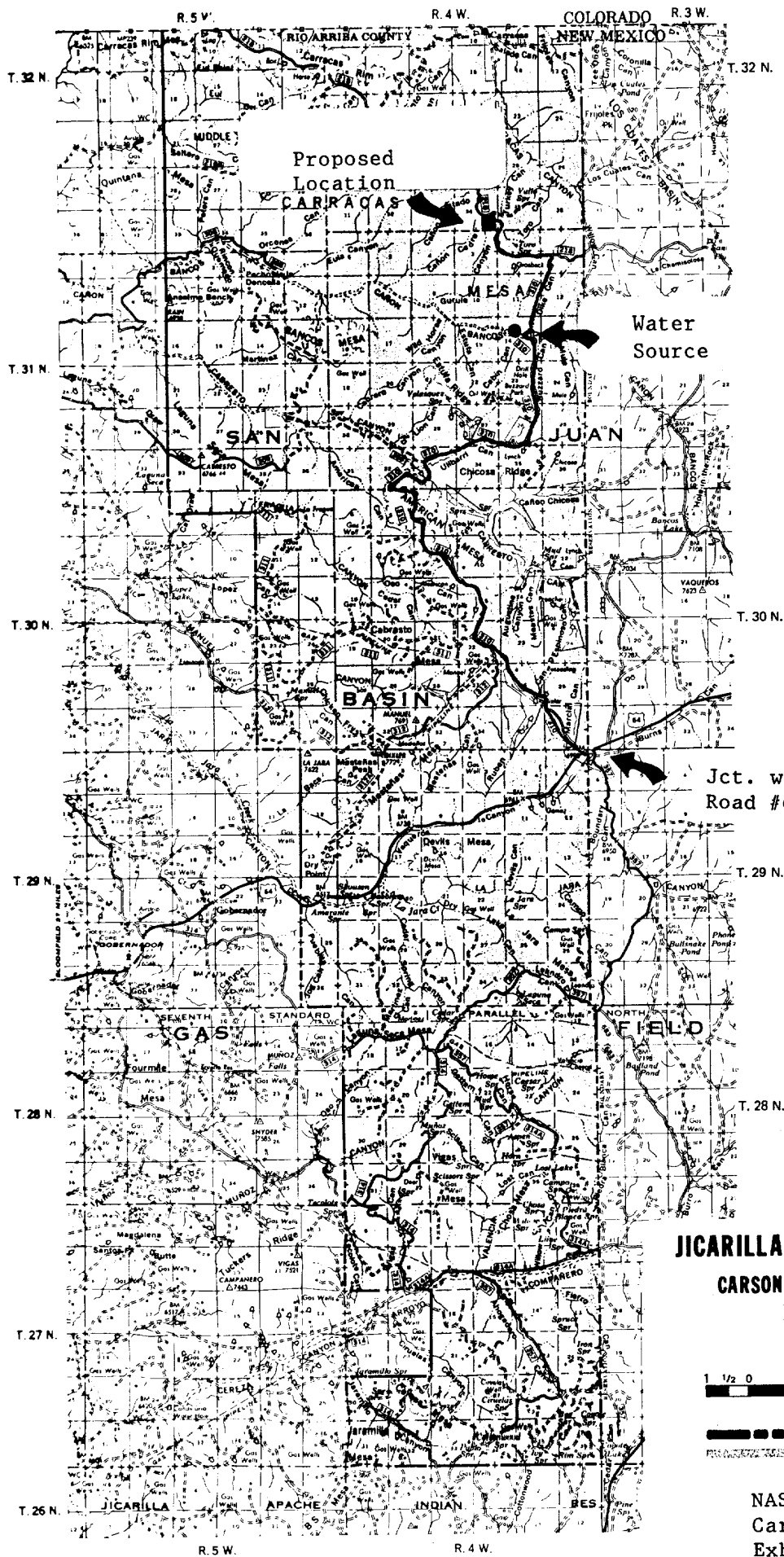
Date Surveyed
July 24, 1988
Registered Professional Engineer
and/or Land Surveyor

Edgar L. Risenhoover
Certificate No. 5979
Edgar L. Risenhoover, L.S.

0 330 660 990 1320 1650 1980 2310 2640 2970 3300 3630 3960 4290 4620 4950 5280 5610 5940 6270 6600



NASSAU RESOURCES, INC.
Carracas Unit 34 B #9
Exhibit F

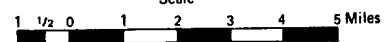


JICARILLA RANGER DISTRICT

**CARSON NATIONAL FOREST
NEW MEXICO**

1977

Scale



LEGEND

- Ranger District Boundary
- ▨ National Forest Land

NASSAU RESOURCES, INC.
Carracas Unit 34 B #9
Exhibit G