

UNITED STATES
DEPARTMENT OF THE INTERIOR
BUREAU OF LAND MANAGEMENT

APPLICATION FOR PERMIT TO DRILL, DEEPEN, OR PLUG BACK

1a. TYPE OF WORK

DRILL ☒

DEEPEN ☐

89 JAN - PLUG BACK ☐

b. TYPE OF WELL

OIL
WELL ☐

GAS
WELL ☒

OTHER ☐

2. NAME OF OPERATOR

NASSAU RESOURCES, INC.

3. ADDRESS OF OPERATOR

P.O. Box 809, Farmington, N.M. 87499

4. LOCATION OF WELL (Report location clearly and in accordance with any State requirements.)*
At surface

1480' FNL - 990' FEL
At proposed prod. zone

14. DISTANCE IN MILES AND DIRECTION FROM NEAREST TOWN OR POST OFFICE*

± 30 mi. N. of Gobernador, N.M.

15. DISTANCE FROM PROPOSED*

LOCATION TO NEAREST
PROPERTY OR LEASE LINE, FT.
(Also to nearest drlg. unit line, if any) 990'

16. NO. OF ACRES IN LEASE

480.0

17. NO. OF ACRES ASSIGNED
TO THIS WELL

320.0

18. DISTANCE FROM PROPOSED LOCATION*

TO NEAREST WELL, DRILLING, COMPLETED,
OR APPLIED FOR, ON THIS LEASE, FT. 170'

19. PROPOSED DEPTH

4030'

20. ROTARY OR CABLE TOOLS

Rotary

21. ELEVATIONS (Show whether DF, RT, GR, etc.)

7175' GL; 7187' KB

DRILLING OPERATIONS AUTHORIZED ARE
SUBJECT TO COMPLIANCE WITH ATTACHED
"GENERAL REQUIREMENTS"

22. APPROX. DATE WORK WILL START*

1/89

23. PROPOSED CASING AND CEMENTING PROGRAM

This action is subject to technical and
procedural review pursuant to 43 CFR 3165.3
and appeal pursuant to 43 CFR 3165.4.

SIZE OF HOLE	SIZE OF CASING	WEIGHT PER FOOT	SETTING DEPTH	QUANTITY OF CEMENT
12-1/4"	9-5/8"	36#	250'	150 cu.ft. circ. to surface
7-7/8"	5-1/2"	15.5#	4030'	873 cu.ft. circ. to surface

This is a resubmission of an Application to Drill approved by the Bureau of Land Management 8/12/88.

Plan to drill with spud mud to set 250' of surface casing. Will then drill with water and gel-chem. mud to test the Fruitland coal zone at ± 4030'. Will run DIL-GR-SP and FDC-CNL-GR Caliper logs. If well appears productive, will set 5-1/2" casing at TD, cement in 1 stage, selectively perforate, frac, clean out after frac and complete with 2-7/8" tubing.

RECEIVED

FEB 09 1989

IN ABOVE SPACE DESCRIBE PROPOSED PROGRAM: If proposal is to deepen or plug back, give data on present productive zone and proposed new productive zone. If proposal is to drill or deepen directionally, give pertinent data on subsurface locations and measured and indicated depth. Give blowout preventer program, if any.

24.

SIGNED James J. Hazen

TITLE Field Supt.

DATE 1/5/89

(This space for Federal or State office use)

PERMIT NO. _____

APPROVAL DATE _____

APPROVED BY _____
CONDITIONS OF APPROVAL, IF ANY:

TITLE _____

APPROVED
AS AMENDED

DATE FEB 06 1989

Area Manager
AREA MANAGER

*See Instructions On Reverse Side

All distances must be from the outer boundaries of the Section.

Operator Nassau Resources, Inc.			Lease Carracas Unit 27 A			Well No. 8		
Unit Letter H	Section 27	Township 32 North		Range 5 West	County Rio Arriba			
Actual Footage Location of Well: 1480 feet from the North line and 990 feet from the East line								
Ground Level Elev. 7175	Producing Formation Fruitland		Pool Basin Fruitland Coal			Dedicated Acreage: 320.0 Acres		

1. Outline the acreage dedicated to the subject well by colored pencil or hachure marks on the plat below.
2. If more than one lease is dedicated to the well, outline each and identify the ownership thereof (both as to working interest and royalty).
3. If more than one lease of different ownership is dedicated to the well, have the interests of all owners been consolidated by communitization, unitization, force-pooling, etc?

☒ Yes ☐ No If answer is "yes," type of consolidation Carracas Unit - Unitization

If answer is "no," list the owners and tract descriptions which have actually been consolidated. (Use reverse side of this form if necessary.)

No allowable will be assigned to the well until all interests have been consolidated (by communitization, unitization, forced-pooling, or otherwise) or until a non-standard unit, eliminating such interests, has been approved by the Division.

USA NM 30016
Kindermac Partners

1480'

990'

SECTION 27

RECEIVED
FEB 09 1989
OIL CON. DIV
DIST. 3

RECEIVED
85 JAN -5 PM 2:46
FARMINGTON RESOURCE AREA
FARMINGTON, NEW MEXICO

CERTIFICATION

I hereby certify that the information contained herein is true and complete to the best of my knowledge and belief.

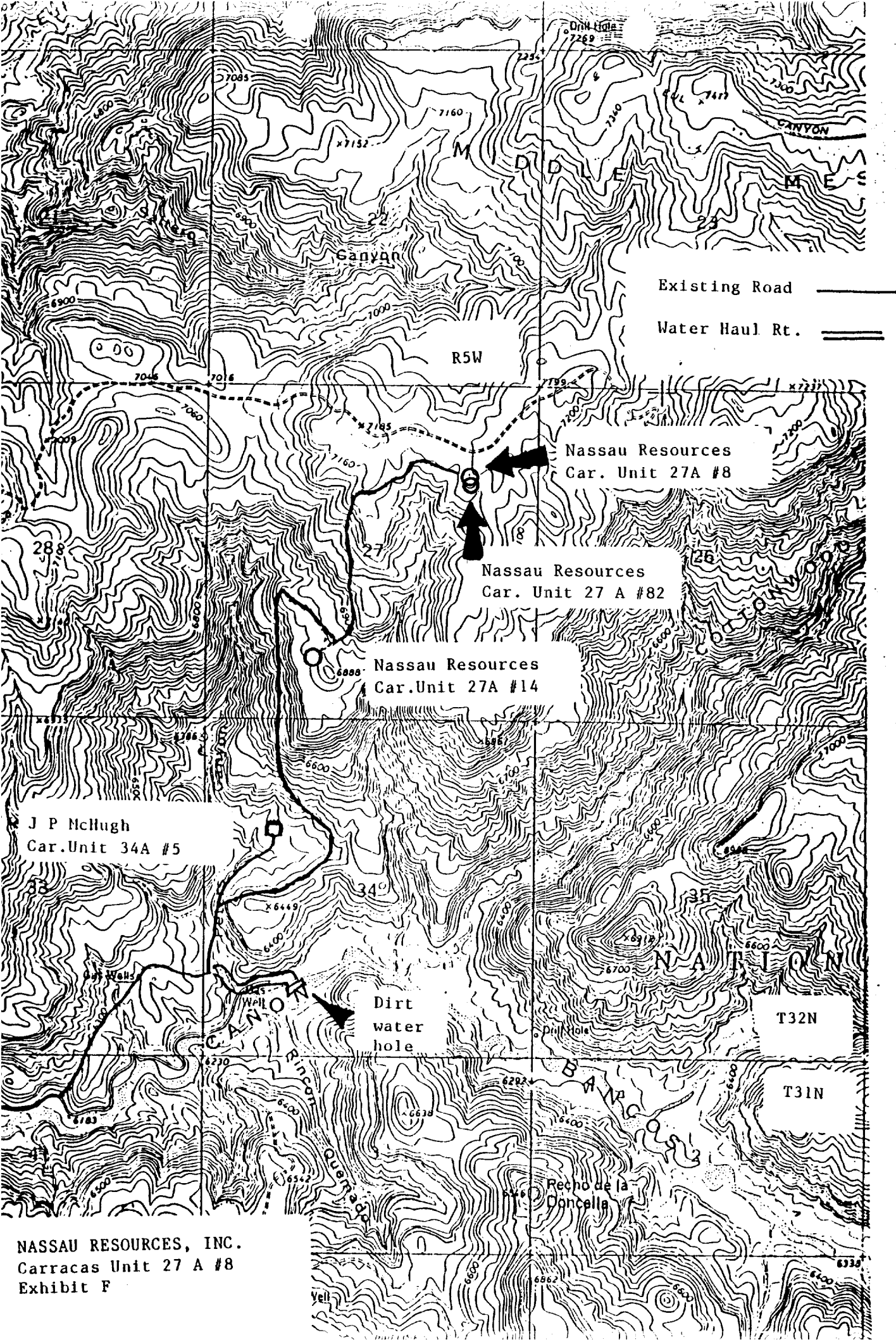
Name
James S. Hazen
Position
Field Supt.
Company
Nassau Resources, Inc.
Date

EDGAR L. RISENHOOVER
NEW MEXICO
1979
I hereby certify that the location of the well shown on the plat was made by me or under my supervision and that the same is correct to the best of my knowledge.

Date Surveyed
May 2, 1988

Registered Professional Engineer
and/or Land Surveyor

Edgar L. Risenhoover
Certificate No. 5979



NASSAU RESOURCES, INC.
Carracas Unit 27 A #8
Exhibit F