

Form 3160-3
(November 1983)
(formerly 9-331C)

SUBMIT IN TRIPLICATE*

(Other instructions on
reverse side)

Form approved.
Budget Bureau No. 1004-0136
Expires August 31, 1985

UNITED STATES
DEPARTMENT OF THE INTERIOR
BUREAU OF LAND MANAGEMENT

RECEIVED
BLM MAIL ROOM

APPLICATION FOR PERMIT TO DRILL, DEEPEN, OR PLUG BACK

1A. TYPE OF WORK

DRILL ☒DEEPEN ☐FARMING PLUG BACK ☐

B. TYPE OF WELL

OIL WELL ☐GAS WELL ☒OTHER ☐SINGLE ZONE ☐MULTIPLE ZONE ☒

2. NAME OF OPERATOR

NASSAU RESOURCES, INC.

3. ADDRESS OF OPERATOR

P O Box 809, Farmington, N.M. 87499

4. LOCATION OF WELL (Report location clearly and in accordance with any State requirements.)*

At surface

790' FNL - 1850' FEL

At proposed prod. zone

14. DISTANCE IN MILES AND DIRECTION FROM NEAREST TOWN OR POST OFFICE*

30 mil. NE of Gobernador

15. DISTANCE FROM PROPOSED*

LOCATION TO NEAREST

PROPERTY OR LEASE LINE, FT.

(Also to nearest drlg. unit line, if any)

790'

16. NO. OF ACRES IN LEASE

1,920.0

17. NO. OF ACRES ASSIGNED TO THIS WELL

160.0

N/320

18. DISTANCE FROM PROPOSED LOCATION*

TO NEAREST WELL, DRILLING, COMPLETED, OR APPLIED FOR, ON THIS LEASE, FT.

2 miles

19. PROPOSED DEPTH

3980'

20. ROTARY OR CABLE TOOLS

Rotary

21. ELEVATIONS (Show whether DF, RT, GR, etc.)

7275' GL; 7284' KB

DRILLING OPERATIONS AUTHORIZED ARE
SUBJECT TO COMPLIANCE WITH ATTACHED
"GENERAL REQUIREMENTS"

22. APPROX. DATE WORK WILL START*

9/88

23.

PROPOSED CASING AND CEMENTING PROGRAM

This action is subject to technical and
procedural review pursuant to 43 CFR 3165.3
and appeal pursuant to 43 CFR 3165.4.

SIZE OF HOLE	SIZE OF CASING	WEIGHT PER FOOT	SETTING DEPTH	
12-1/4"	9-5/8"	36#	250'	150 cu.ft. circ. to surface.
7-7/8"	5-1/2"	15.5#	3980'	862 cu.ft. circ. to surface.

Plan to drill with spud mud to set 250' of surface casing. Will then drill with water and gel-chem. mud to test the Fruitland coal zone at \pm 3980'. Will run DIL-GR-SP and FDC-CNL-GR Caliper logs. If well appears productive, will set 5-1/2" casing at TD, cement in 1 stage, selectively perforate, frac, clean out after frac and complete with 2-7/8" tubing.

RECEIVED
MAY 01 1989

GAS IS NOT DEDICATED.

OIL CON. DIV.
DIST. 3

IN ABOVE SPACE DESCRIBE PROPOSED PROGRAM: If proposal is to deepen or plug back, give data on present productive zone and proposed new productive zone. If proposal is to drill or deepen directionally, give pertinent data on subsurface locations and measured and true vertical depths. Give blowout preventer program, if any.

24.

SIGNED

James S. Hazen

TITLE

Field Supt.

DATE

8/17/88

(This space for Federal or State use)

PERMIT NO.

APPROVAL DATE

APPROVED BY

TITLE

DATE

CONDITIONS OF APPROVAL, IF ANY:

NMCCC

*See Instructions On Reverse Side

Title 18 U.S.C. Section 1001, makes it a crime for any person knowingly and willfully to make to any department or agency of the United States any false, fictitious or fraudulent statements or representations as to any matter within its jurisdiction.

OIL CONSERVATION DIVISION

STATE OF NEW MEXICO
ENERGY AND MINERALS DEPARTMENTP. O. BOX 2088
SANTA FE, NEW MEXICO 87501Form C-102
Revised 10-1-78

All distances must be from the outer boundaries of the Section.

Operator Nassau Resources, Inc.		Lease Carracas Unit 34 B		Well No. 2
Unit Letter B	Section 34	Township 32 North	Range 4 West	County Rio Arriba
Actual Footage Location of Well: 790 feet from the North line and 1850' feet from the East line				
Ground Level Elev. 7275	Producing Formation Fruitland	Pool Basin Fruitland Coal	Dedicated Acreage: 320.0 Acres	

1. Outline the acreage dedicated to the subject well by colored pencil or hachure marks on the plat below.
2. If more than one lease is dedicated to the well, outline each and identify the ownership thereof (both as to working interest and royalty).
3. If more than one lease of different ownership is dedicated to the well, have the interests of all owners been consolidated by communitization, unitization, force-pooling, etc?

☒ Yes ☐ No If answer is "yes," type of consolidation Unitization-Carracas Unit

If answer is "no," list the owners and tract descriptions which have actually been consolidated. (Use reverse side of this form if necessary.) _____

No allowable will be assigned to the well until all interests have been consolidated (by communitization, unitization, forced-pooling, or otherwise) or until a non-standard unit, eliminating such interests, has been approved by the Division.

NM 59696 Amoco Production Co 100%	790' 1850'
SECTION 34	
RECEIVED MAIL ROOM 69 FEB - 1 AM 9:29 FARMINGTON RESOURCE AREA FARMINGTON, NEW MEXICO	

CERTIFICATION

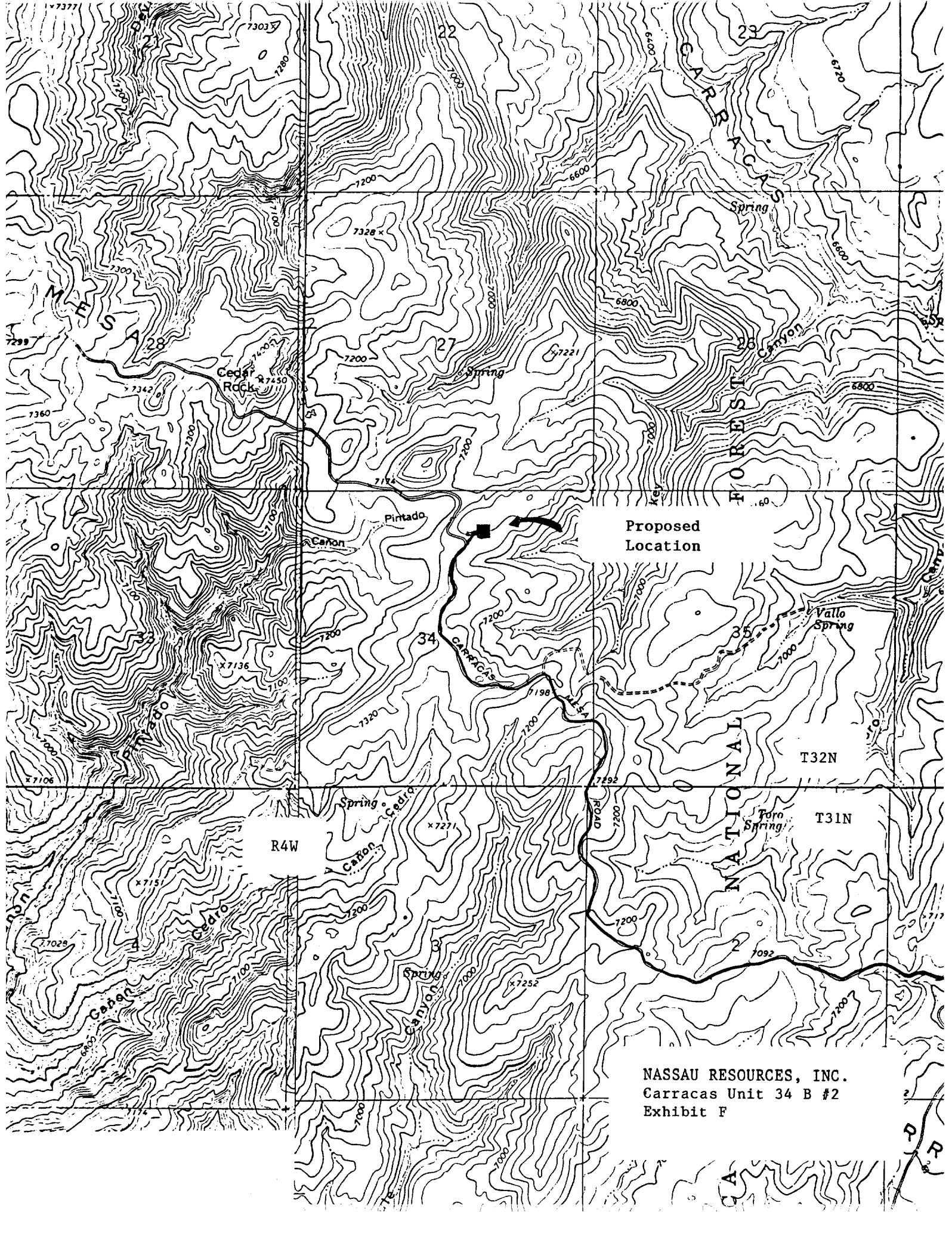
I hereby certify that the information contained herein is true and complete to the best of my knowledge and belief.

Fran Perrin
Name
Fran Perrin
Position
Admin. Asst.
Company
Nassau Resources, Inc.
Date
January 31, 1989

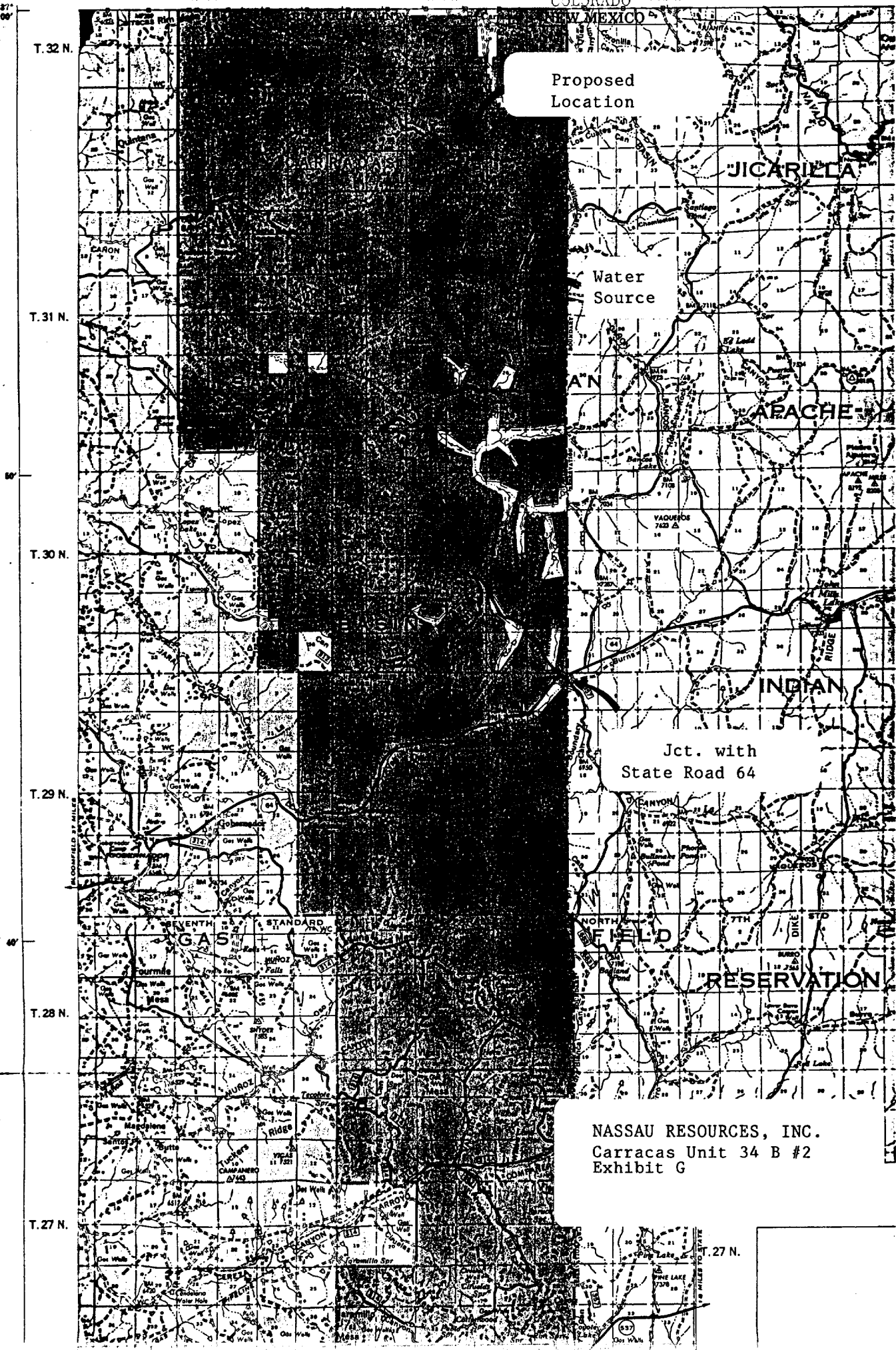


Date Surveyed
August 4, 1988
Registered Professional Engineer
and/or Land Surveyor

Edgar L. Risenborn
Certificate No. _____



NASSAU RESOURCES, INC.
Carracas Unit 34 B #2
Exhibit F



Proposed
Location

Water
Source

Jct. with
State Road 64

NASSAU RESOURCES, INC.
Carracas Unit 34 B #2
Exhibit G

T. 27 N.