

UNITED STATES  
DEPARTMENT OF THE INTERIOR  
BUREAU OF LAND MANAGEMENT

APPLICATION FOR PERMIT TO DRILL, DEEPEN, OR PLUG BACK

1a. TYPE OF WORK

DRILL ☒

DEEPEN ☐

PLUG BACK ☐

b. TYPE OF WELL

OIL  
WELL ☐

GAS  
WELL ☒

OTHER

SINGLE  
ZONE ☒

MULTIPLE  
ZONE ☐

2. NAME OF OPERATOR

NASSAU RESOURCES, INC.

3. ADDRESS OF OPERATOR

P.O. Box 809, Farmington, N.M. 87499

4. LOCATION OF WELL (Report location clearly and in accordance with any State requirements.)\*

At surface

1650' FSL - 1190' FWL  
At proposed prod. zone

14. DISTANCE IN MILES AND DIRECTION FROM NEAREST TOWN OR POST OFFICE\*

± 30 miles N. of Gobernador, N.M.

15. DISTANCE FROM PROPOSED\*

LOCATION TO NEAREST  
PROPERTY OR LEASE LINE, FT.  
(Also to nearest drlg. unit line, if any) 1190'

16. NO. OF ACRES IN LEASE

1,760.0

17. NO. OF ACRES ASSIGNED  
TO THIS WELL

160.0

18. DISTANCE FROM PROPOSED LOCATION\*

TO NEAREST WELL, DRILLING, COMPLETED,  
OR APPLIED FOR, ON THIS LEASE, FT. ± 1/2 mile

19. PROPOSED DEPTH

3975'

20. ROTARY OR CABLE TOOLS

Rotary

21. ELEVATIONS (Show whether DF, RT, GR, etc.)

7185' GL; 7197' KB

22. APPROX. DATE WORK WILL START\*

July 1988

23. **THIS ACTION IS SUBJECT TO TECHNICAL AND  
PROCEDURAL REVIEW PURSUANT TO 43 CFR 3163.3  
AND APPEAL PURSUANT TO 43 CFR 3165.6.**

DRILLING OPERATIONS AUTHORIZED ARE  
SUBJECT TO COMPLIANCE WITH ATTACHED  
"GENERAL REQUIREMENTS"

SIZE OF HOLE	SIZE OF CASING	WEIGHT PER FOOT	SETTING DEPTH	
12-1/4"	9-5/8"	36#	250'	150 cu.ft. circ. to surface
7-7/8"	5-1/2"	15.5#	3975'	862 cu.ft. circ. to surface

Plan to drill with spud mud to set 250' of surface casing. Will then drill with water and gel-chem. mud to test the Fruitland coal zone at ± 3975'. Will run DIL-GR-SP and FDC-CNL-GR Caliper logs. If well appears productive, will set 5-1/2" casing at TD, cement in 1 stage, selectively perforate, frac, clean out after frac and complete with 2-7/8" tubing.

GAS IS NOT DEDICATED.

RECEIVED  
MAY 01 1989  
OIL CON. DIV.  
DIST. 3

IN ABOVE SPACE DESCRIBE PROPOSED PROGRAM: If proposal is to deepen or plug back, give data on present productive zone and proposed new productive zone. If proposal is to drill or deepen directionally, give pertinent data on subsurface locations and measured and true vertical depths. Give blowout preventer program, if any.

24.

SIGNED

James S. Hazen

TITLE

Field Supt.

DATE

6/20/88

(This space for Federal or State office use)

PERMIT NO.

APPROVAL DATE

APPROVED BY

TITLE

DATE

CONDITIONS OF APPROVAL, IF ANY:

NMOCC

\*See Instructions On Reverse Side

All distances must be from the outer boundaries of the Section.

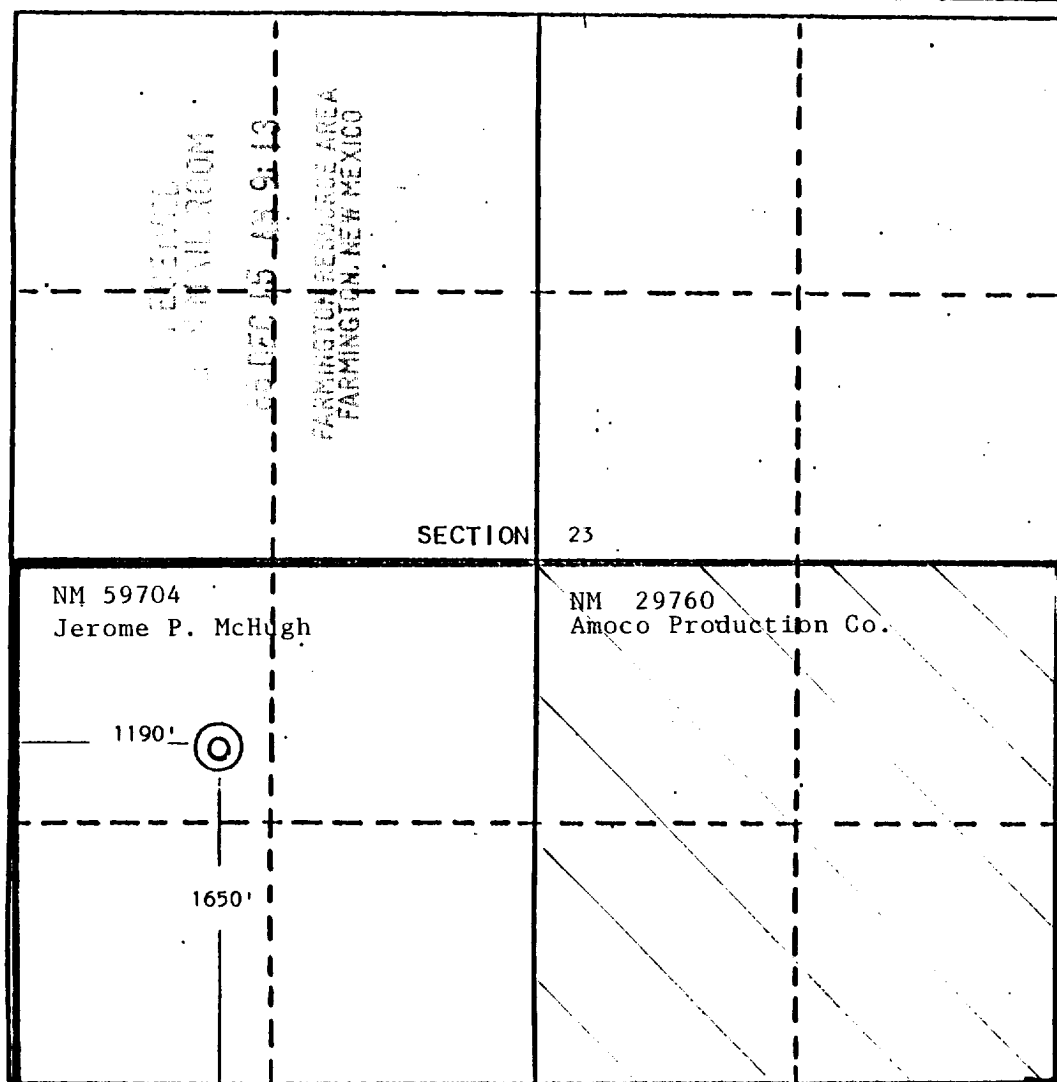
Operator Nassau Resources, Inc.		Lease Carracas Unit 23 A		Well No. 12
Unit Letter L	Section 23	Township 32 North	Range 5 West	County Rio Arriba
Actual Footage Location of Well:				
1650	feet from the	South	line and	1190
				feet from the
				West
				line
Ground Level Elev. 7185	Producing Formation Fruitland		Pool Basin Fruitland Coal	Dedicated Acreage: 320
				Acres

1. Outline the acreage dedicated to the subject well by colored pencil or hachure marks on the plat below.
2. If more than one lease is dedicated to the well, outline each and identify the ownership thereof (both as to working interest and royalty).
3. If more than one lease of different ownership is dedicated to the well, have the interests of all owners been consolidated by communitization, unitization, force-pooling, etc?

☒ Yes ☐ No If answer is "yes," type of consolidation Carracas Unit - Unitization

If answer is "no," list the owners and tract descriptions which have actually been consolidated. (Use reverse side of this form if necessary.)

No allowable will be assigned to the well until all interests have been consolidated (by communitization, unitization, forced-pooling, or otherwise) or until a non-standard unit, eliminating such interests, has been approved by the Division.



# CERTIFICATION

I hereby certify that the information contained herein is true and complete to the best of my knowledge and belief.

*Fran Perrin*

Name

Fran Perrin

Position

Admin. Asst.

Company

Nassau Resources, Inc.

Date

12/8/88

I hereby certify that the location shown on this plat was located from field notes of actual survey made by me or under my supervision, and that the same is true and correct to the best of my knowledge and belief.

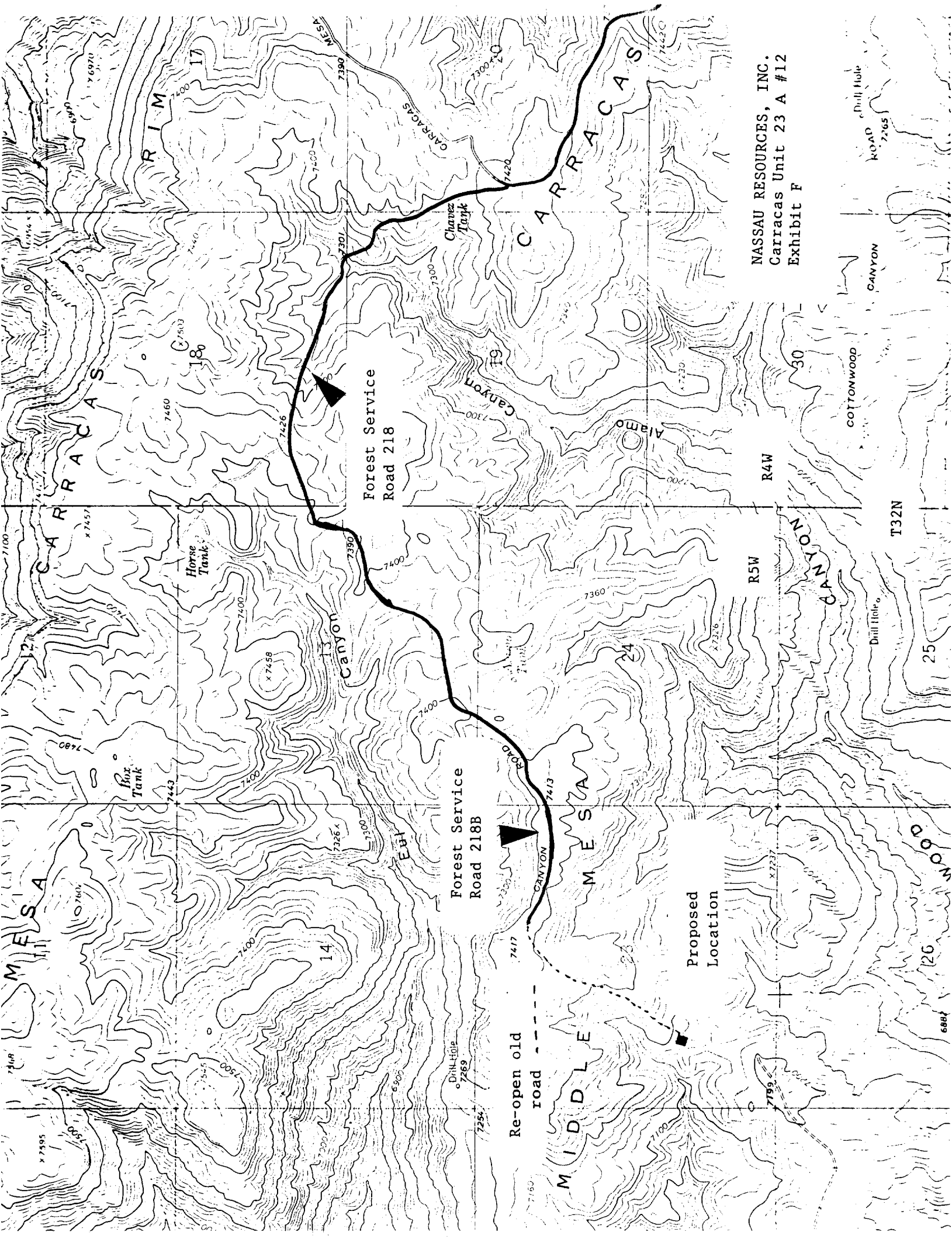
Date Surveyed

June 4, 1988

Registered Professional Engineer  
and/or Land Surveyor

*Edgar L. Risenhoover*  
Certificate No. 5979

Edgar L. Risenhoover, P.E.



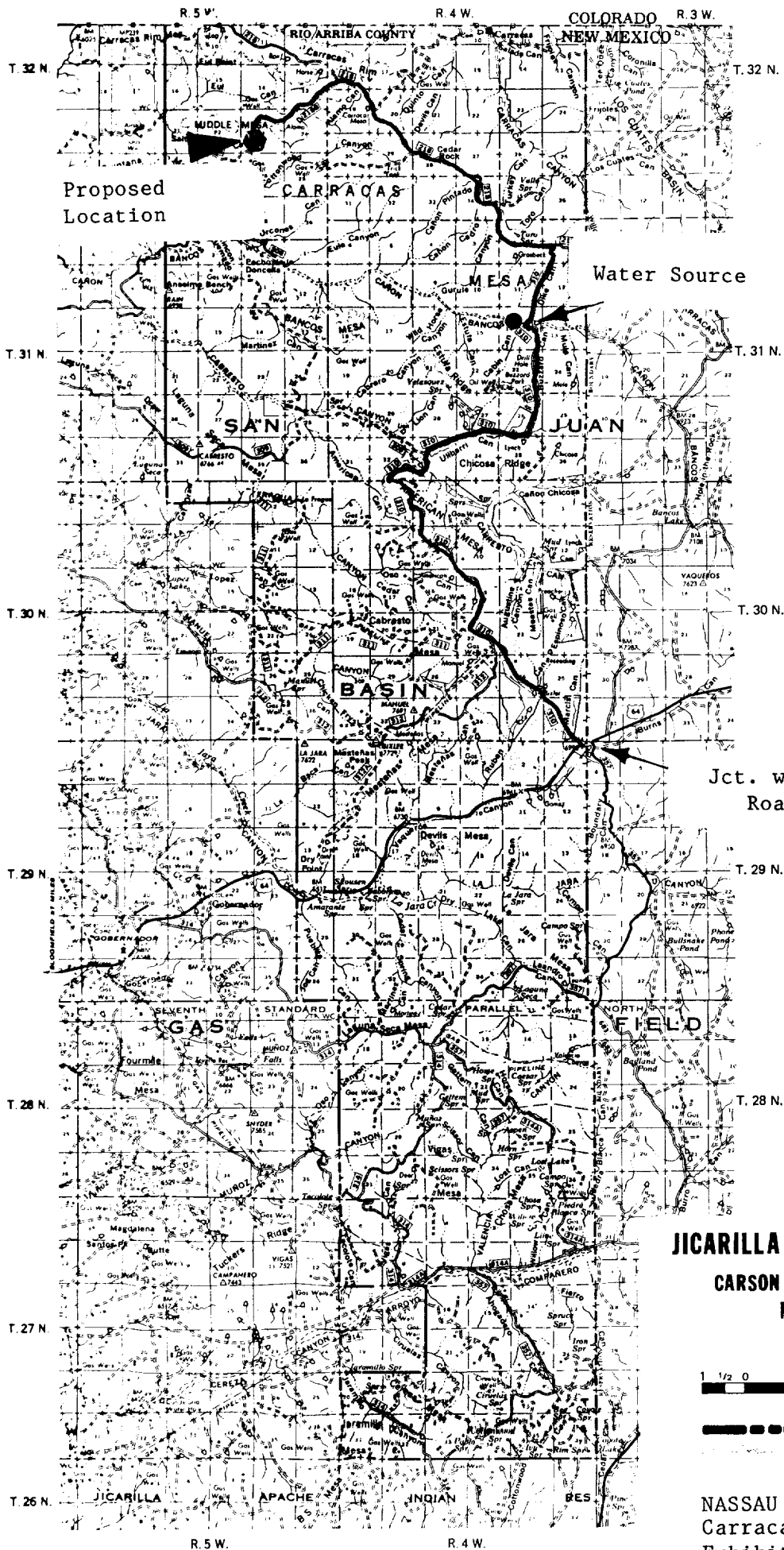
NASSAU RESOURCES, INC.  
Carracas Unit 23 A #12  
Exhibit F

Forest Service  
Road 218

Forest Service  
Road 218B

Proposed  
Location

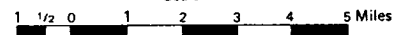
Re-open old  
road



**JICARILLA RANGER DISTRICT  
CARSON NATIONAL FOREST  
NEW MEXICO**

1977

Scale



**LEGEND**

- Ranger District Boundary
- National Forest Land

NASSAU RESOURCES, INC.  
Carracas Unit 23 A #12  
Exhibit G