

Form 3160-3
(November 1983)
(formerly 9-331C)

SUBMIT IN TRIPPLICATE*
(Other instructions on
reverse side)

Form approved.
Budget Bureau No. 1004-0136
Expires August 31, 1985

UNITED STATES
DEPARTMENT OF THE INTERIOR
BUREAU OF LAND MANAGEMENT

APPLICATION FOR PERMIT TO DRILL, DEEPEN, OR PLUG BACK

5. LEASE DESIGNATION AND SERIAL NO. **NM 30351**

6. IF INDIAN, ALLOTTEE OR TRIBE NAME

7. UNIT AGREEMENT NAME **Carracas Unit**

8. FARM OR LEASE NAME **Carracas Unit 22 A**

9. WELL NO. **#13**

10. FIELD AND POOL, OR WILDCAT **FRUITLAND COAL**

11. SEC., T., R., M., OR BLK. AND SURVEY OR AREA **Sec. 22, T32N, R5W**

12. COUNTY OR PARISH **Rio Arriba** 13. STATE **NM**

14. DISTANCE IN MILES AND DIRECTION FROM NEAREST TOWN OR POST OFFICE* **+ 31 miles N. of Gobernador, N.M.**

15. DISTANCE FROM PROPOSED* LOCATION TO NEAREST PROPERTY OR LEASE LINE, FT. (Also to nearest drlg. unit line, if any) **540'**

16. NO. OF ACRES IN LEASE **1,280.0**

17. NO. OF ACRES ASSIGNED TO THIS WELL **160.0**

18. DISTANCE FROM PROPOSED LOCATION* TO NEAREST WELL, DRILLING, COMPLETED, OR APPLIED FOR, ON THIS LEASE, FT. **1 Mile**

19. PROPOSED DEPTH **3795'**

20. ROTARY OR CABLE TOOLS **Rotary**

21. ELEVATIONS (Show whether DF, RT, GR, etc.) **7022' GL; 7034'**

22. APPROX. DATE WORK WILL START* **9/88**

23. PROPOSED CASING AND CEMENTING PROGRAM

DRILLING OPERATIONS AUTHORIZED ARE SUBJECT TO COMPLIANCE WITH ATTACHED "GENERAL REQUIREMENTS"

SIZE OF HOLE	SIZE OF CASING	WEIGHT PER FOOT	SETTING DEPTH	QUANTITY OF CEMENT
12-1/4	9-5/8"	36#	250'	150 cu.ft. circ. to surface.
7-7/8"	5-1/2"	15.5#	3795'	820 cu.ft. circ. to surface.

Plan to drill with spud mud to set 250' of surface casing. Will then drill with water and gel-chem. mud to test the Fruitland coal zone at ± 3795'. Will run DIL-GR-SP and FDC-CNL-GR Caliper logs. If well appears productive, will set 5-1/2" casing at TD, cement in 1 stage, selectively perforate, frac, clean out after frac and complete with 2-7/8" tubing.

GAS IS NOT DEDICATED.

RECEIVED
MAY 05 1989
OIL CON. DIV
DIST. 3

IN ABOVE SPACE DESCRIBE PROPOSED PROGRAM: If proposal is to deepen or plug back, give data on present productive zone and proposed new productive zone. If proposal is to drill or deepen directionally, give pertinent data on subsurface locations and measured and true vertical depths. Give blowout preventer program, if any.

24. SIGNED James S. Hazen TITLE Field Supt. DATE 8/4/88
(This space for Federal or State office use)

PERMIT NO. _____ APPROVAL DATE _____
APPROVED BY _____ TITLE _____ DATE _____
CONDITIONS OF APPROVAL, IF ANY:

NSL-2580 @

NMOCC

*See Instructions On Reverse Side

OIL CONSERVATION DIVISION

P. O. BOX 2088

SANTA FE, NEW MEXICO 87501

Form C-102
Revised 10-1-70

STATE OF NEW MEXICO
ENERGY AND MINERALS DEPARTMENT

All distances must be from the outer boundaries of the Section.

Operator Nassau Resources, Inc.			Lease Carracas Unit 22 A			Well No. 13		
Well Letter M	Section 22	Township 32 North	Range 5 West	County Rio Arriba				
Vertical Footage Location of Well: 620 feet from the South line and 540 feet from the West line								
Ground Level Elev. 7022	Producing Formation Fruitland		Pool Basin Fruitland Coal			Dedicated Acres 320		

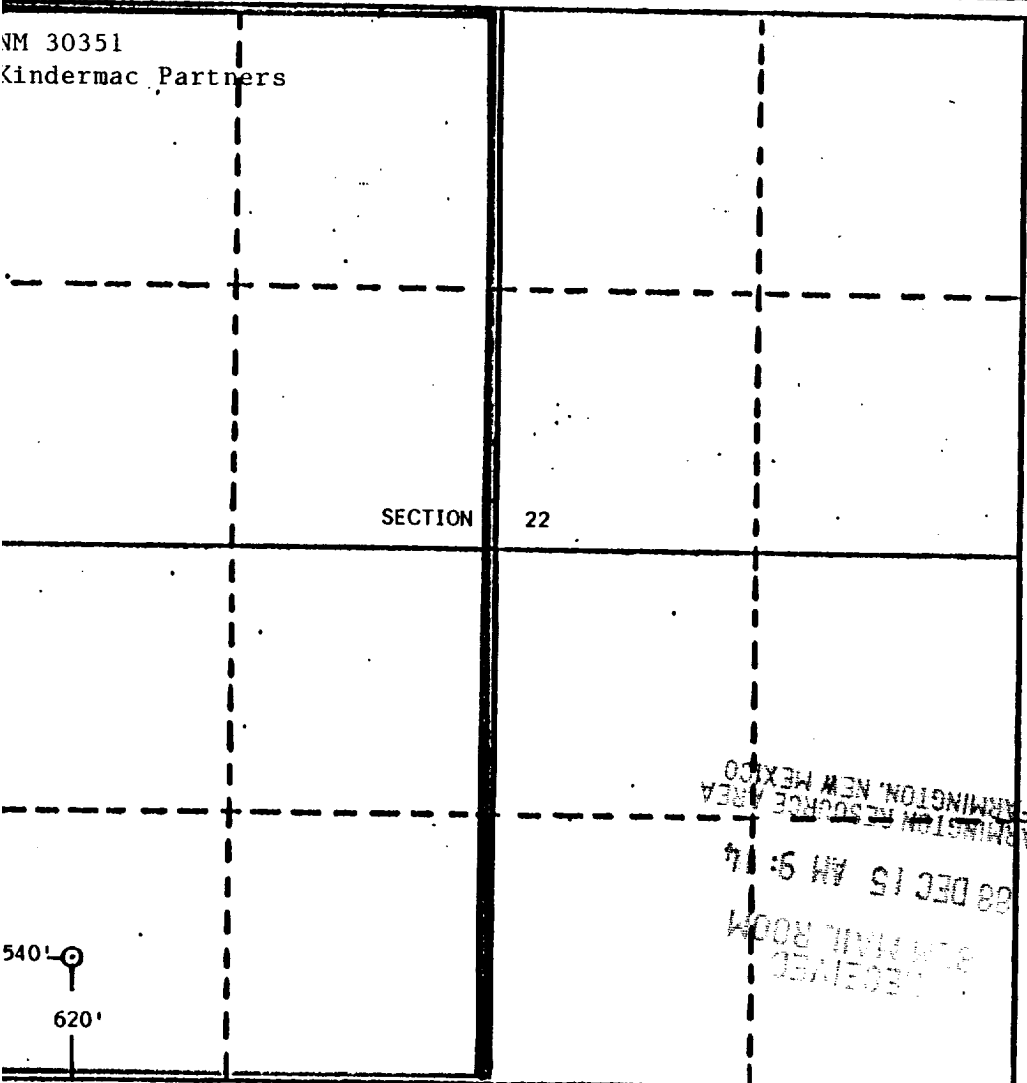
Acres

1. Outline the acreage dedicated to the subject well by colored pencil or hachure marks on the plat below.
2. If more than one lease is dedicated to the well, outline each and identify the ownership thereof (both as to working interest and royalty).
3. If more than one lease of different ownership is dedicated to the well, have the interests of all owners been consolidated by communitization, unitization, force-pooling, etc?

Yes No If answer is "yes," type of consolidation Carracas Unit - Unitization

If answer is "no," list the owners and tract descriptions which have actually been consolidated. (Use reverse side of this form if necessary.) _____

No allowable will be assigned to the well until all interests have been consolidated (by communitization, unitization, forced-pooling, or otherwise) or until a non-standard unit, eliminating such interests, has been approved by the Division.



RECEIVED
MAIL ROOM
DEC 15 AM 5:14
PARRINGTON RESOURCE AREA
NEW MEXICO

CERTIFICATION

I hereby certify that the information contained herein is true and complete to the best of my knowledge and belief.

Fran Perrin

Name
Fran Perrin

Position
Admin. Asst.

Company
Nassau Resources, Inc.

Date
12/8/88

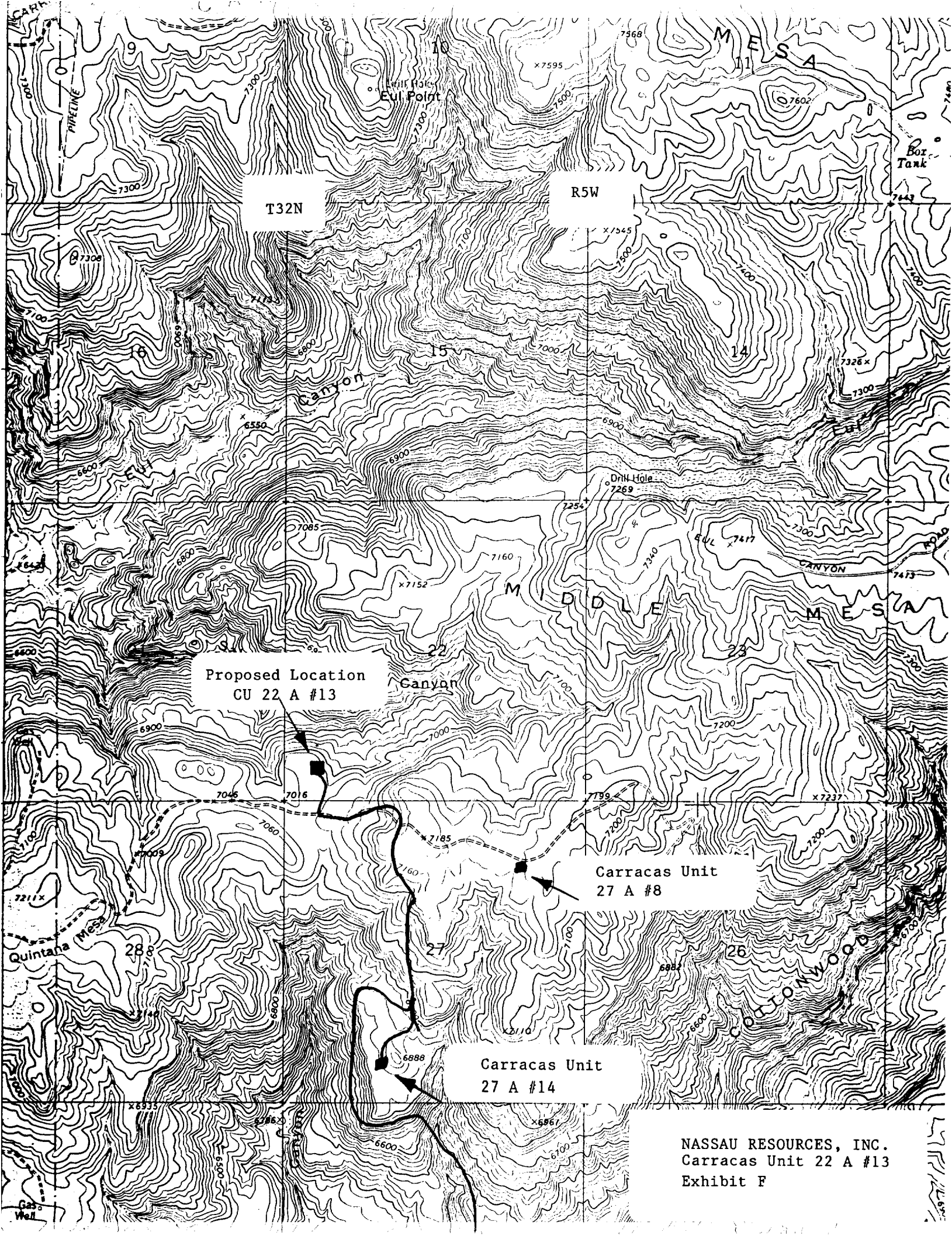
EDGAR L. RISENWOOD
NEW MEXICO
5979

Date Surveyed
June 23, 1988

Registered Professional Engineer
and/or Land Surveyor

Edgar L. Risenwood

Certificate No. 5979



T32N

R5W

Proposed Location
CU 22 A #13

Carracas Unit
27 A #8

Carracas Unit
27 A #14

NASSAU RESOURCES, INC.
Carracas Unit 22 A #13
Exhibit F

Proposed Location

Existing Road _____
Access Road - - - - -
Water Haul Rt. = = = = =

T.32 N.

STATE

Water Source

T.31 N.

R.7 W.

NASSAU RESOURCES, INC.
Carracas Unit 22 A #13
Exhibit G

