

Form 3160-3  
(November 1983)  
(Formerly 9-331C)

SUBMIT IN TRIPPLICATE\*  
(Other instructions on  
reverse side)

Form approved.  
Budget Bureau No. 1004-0136  
Expires August 31, 1985

UNITED STATES  
DEPARTMENT OF THE INTERIOR  
BUREAU OF LAND MANAGEMENT

APPLICATION FOR PERMIT TO DRILL, DEEPEN, OR PLUG BACK

1a. TYPE OF WORK

DRILL ☒

DEEPEN ☐

PLUG BACK ☐

1b. TYPE OF WELL

OIL  
WELL ☐

GAS  
WELL ☒

OTHER

SINGLE  
ZONE ☒

MULTIPLE  
ZONE ☐

2. NAME OF OPERATOR

NASSAU RESOURCES, INC.

3. ADDRESS OF OPERATOR

P. O. Box 809, Farmington, N.M. 87499

4. LOCATION OF WELL (Report location clearly and in accordance with any State requirements.)\*

At surface

1190' FSL - 1850' FEL

At proposed prod. zone

14. DISTANCE IN MILES AND DIRECTION FROM NEAREST TOWN OR POST OFFICE\*

34 Miles NE of Gobernador, N.M.

15. DISTANCE FROM PROPOSED\*

LOCATION TO NEAREST  
PROPERTY OR LEASE LINE, FT.  
(Also to nearest drlg. unit line, if any)

1190'

16. NO. OF ACRES IN LEASE

2,080.0

17. NO. OF ACRES ASSIGNED  
TO THIS WELL

160.0

18. DISTANCE FROM PROPOSED LOCATION\*  
TO NEAREST WELL, DRILLING, COMPLETED,  
OR APPLIED FOR, ON THIS LEASE, FT.

2 miles

19. PROPOSED DEPTH

3725'

20. ROTARY OR CABLE TOOLS

Rotary

21. ELEVATIONS (Show whether DF, RT, GR, etc.)

7020' GL; 7032' KB

This action is subject to technical and  
procedural review pursuant to 43 CFR 3165.3  
and appeal pursuant to 43 CFR 3165.4.

22. APPROX. DATE WORK WILL START\*

9/88

23. PROPOSED CASING AND CEMENTING PROGRAM

DRILLING OPERATIONS AUTHORIZED ARE  
SUBJECT TO COMPLIANCE WITH ATTACHED

"GENERAL REQUIREMENTS"

150 cu.ft. circ. to surface.  
806 cu.ft. circ. to surface.

SIZE OF HOLE	SIZE OF CASING	WEIGHT PER FOOT	SETTING DEPTH
12-1/4"	9-5/8"	36#	250'
7-7/8"	5-1/2"	15.5#	3725'

Plan to drill with spud mud to set 250' of surface casing. Will then drill with water and gel-chem. mud to test the Fruitland coal zone at  $\pm$  3725'. Will run DIL-GR-SP and FDC-CNL-GR Caliper logs. If well appears productive, will set 5-1/2" casing at TD, cement in 1 stage, selectively perforate, frac, clean out after frac and complete with 2-7/8" tubing.

GAS IS NOT DEDICATED.

RECEIVED  
MAY 05 1989  
OIL CON. DIV.  
DIST. 3

IN ABOVE SPACE DESCRIBE PROPOSED PROGRAM: If proposal is to deepen or plug back, give data on present productive zone and proposed new productive zone. If proposal is to drill or deepen directionally, give pertinent data on subsurface locations and measured and true vertical depths. Give blowout preventer program, if any.

24.

SIGNED

TITLE Field Supt.

DATE 8/10/88

(This space for Federal or State office use)

PERMIT NO.

APPROVAL DATE

APPROVED BY

TITLE

DATE

CONDITIONS OF APPROVAL, IF ANY:

R-8844 (NSL)

NMOCC

\*See Instructions On Reverse Side

Title 18 U.S.C. Section 1001, makes it a crime for any person knowingly and willfully to make to any department or agency of the United States any false, fictitious or fraudulent statements or representations as to any matter within its jurisdiction.

## OIL CONSERVATION DIVISION

STATE OF NEW MEXICO  
ENERGY AND MINERALS DEPARTMENT

P. O. BOX 2088

SANTA FE, NEW MEXICO 87501

Form C-102  
Revised 10-1-78

All distances must be from the outer boundaries of the Section.

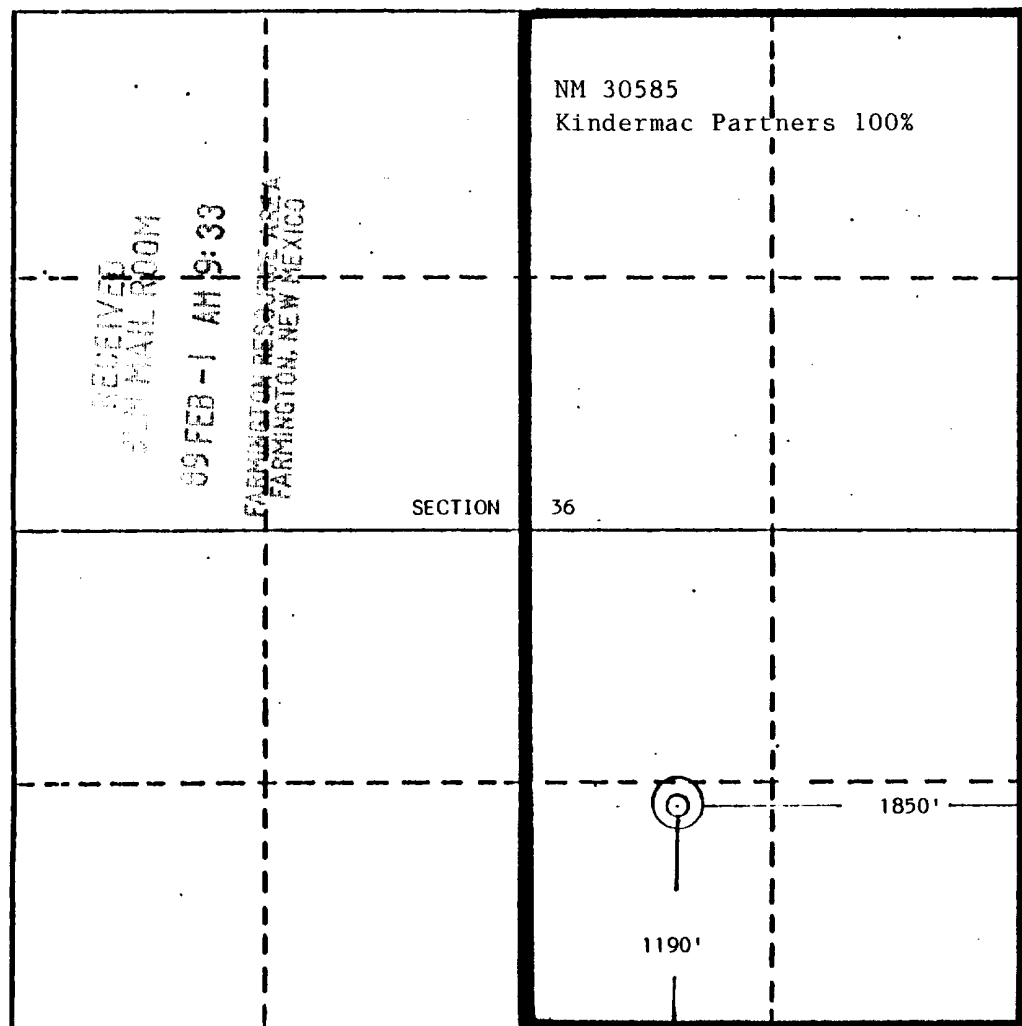
Operator Nassau Resources, Inc.			Lease Carracas Unit 36 B		Well No. 15
Unit Letter 0	Section 36	Township 32 North	Range 4 West	County Rio Arriba	
Actual Footage Location of Well: 1190 feet from the South line and 1850 feet from the East line					
Ground Level Elev. 7020	Producing Formation Fruitland	Pool Basin Fruitland Coal		Dedicated Acreage: 320.0 Acres	

1. Outline the acreage dedicated to the subject well by colored pencil or hatchure marks on the plat below.
2. If more than one lease is dedicated to the well, outline each and identify the ownership thereof (both as to working interest and royalty).
3. If more than one lease of different ownership is dedicated to the well, have the interests of all owners been consolidated by communitization, unitization, force-pooling, etc?

☒ Yes ☐ No If answer is "yes," type of consolidation Unitization - Carracas Unit

If answer is "no," list the owners and tract descriptions which have actually been consolidated. (Use reverse side of this form if necessary.)

No allowable will be assigned to the well until all interests have been consolidated (by communitization, unitization, forced-pooling, or otherwise) or until a non-standard unit, eliminating such interests, has been approved by the Division.



## CERTIFICATION

I hereby certify that the information contained herein is true and complete to the best of my knowledge and belief.

*Fran Perrin*

Name  
Fran Perrin

Position  
Admin. Asst.

Company  
Nassau Resources, Inc.

Date  
1/31/89

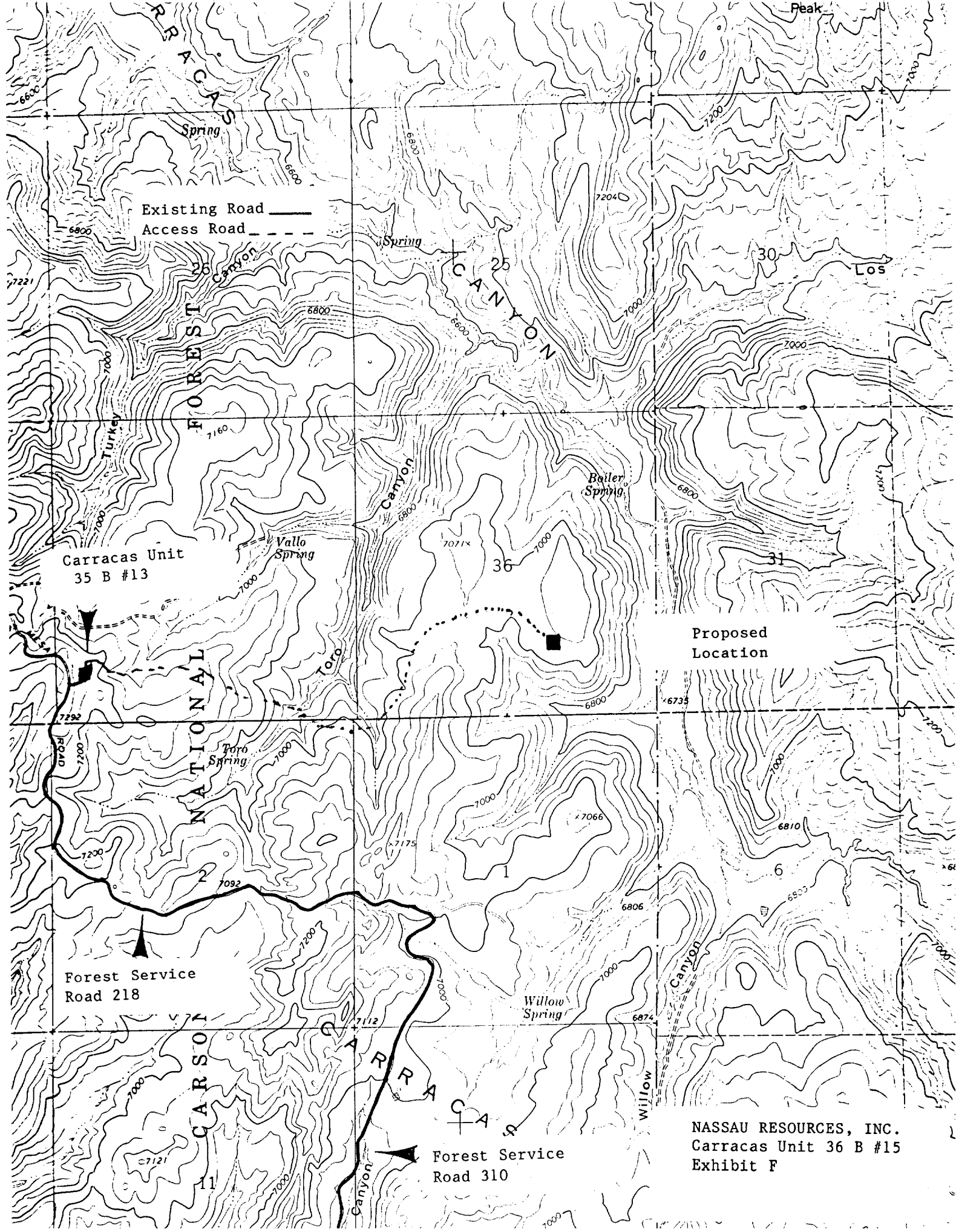
I hereby certify that the well location shown on this plat was obtained from field notes of a survey conducted by me or under my supervision and that the same is true and correct to the best of my knowledge and belief.

Date Surveyed  
July 26, 1988

Registered Professional Engineer  
and/or Land Surveyor

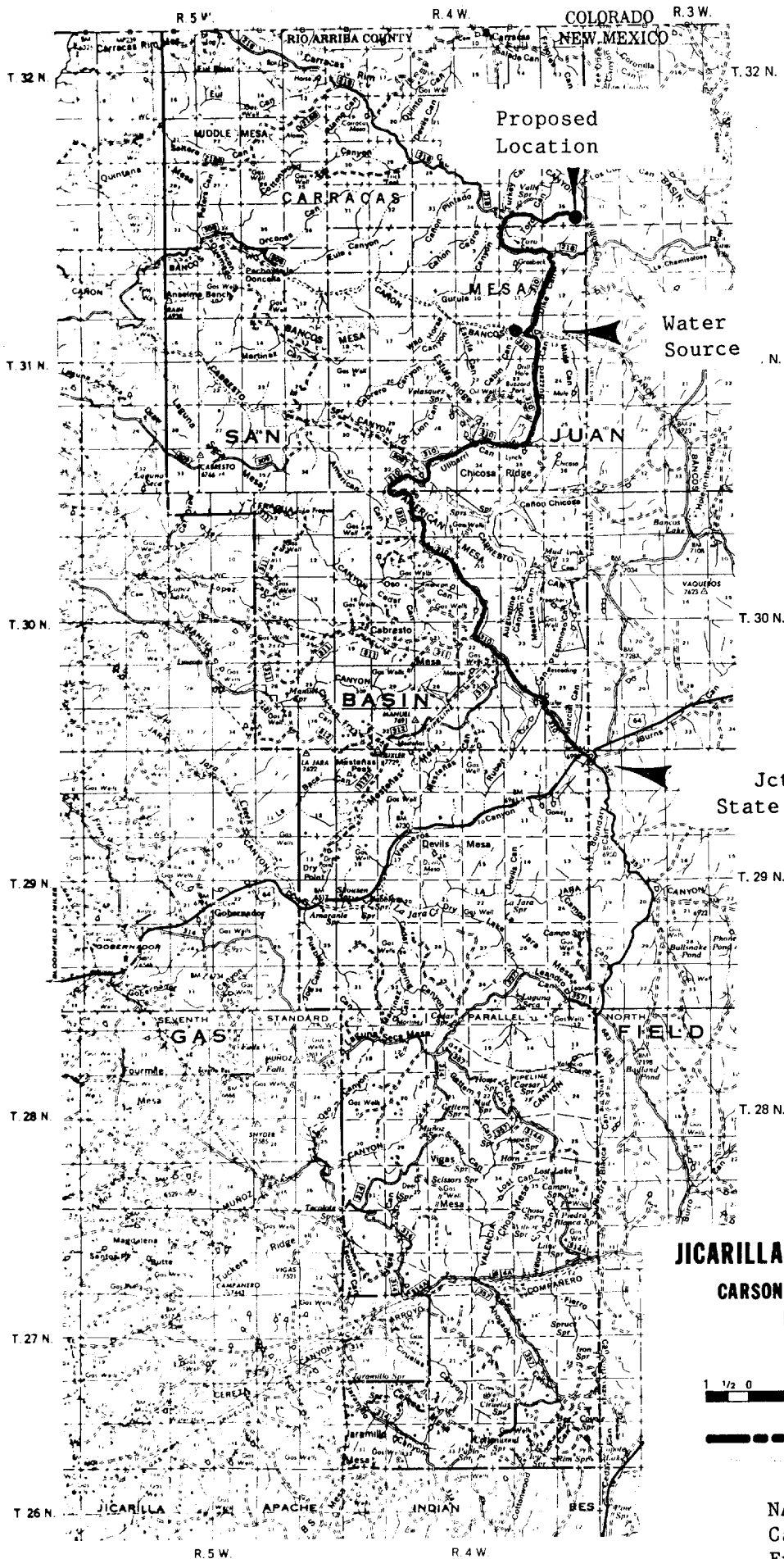
*Edgar L. Risenhoover*

Certificate No. 5979  
Edgar L. Risenhoover, L.S.



Proposed  
Location

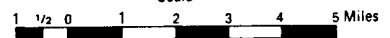
NASSAU RESOURCES, INC.  
Carracas Unit 36 B #15  
Exhibit F



**JICARILLA RANGER DISTRICT  
CARSON NATIONAL FOREST  
NEW MEXICO**

1977

Scale



**LEGEND**

- Ranger District Boundary
- ..... National Forest Land

NASSAU RESOURCES, INC.  
Carracas Unit 36 B #15  
Exhibit G