

UNITED STATES  
DEPARTMENT OF THE INTERIOR  
BUREAU OF LAND MANAGEMENT

APPLICATION FOR PERMIT TO DRILL, DEEPEN, OR PLUG BACK

1a. TYPE OF WORK

DRILL ☒

DEEPEN ☐

PLUG BACK ☐

b. TYPE OF WELL

OIL  
WELL ☐

GAS  
WELL ☒

OTHER

2. NAME OF OPERATOR

NASSAU RESOURCES, INC.

3. ADDRESS OF OPERATOR

P.O. Box 809, Farmington, N.M. 87499

4. LOCATION OF WELL (Report location clearly and in accordance with any State requirements.)\*  
At surface

1770' FNL - 830' FWL  
At proposed prod. zone

14. DISTANCE IN MILES AND DIRECTION FROM NEAREST TOWN OR POST OFFICE\*

± 30 miles N. of Gobernador, N.M.

15. DISTANCE FROM PROPOSED\*  
LOCATION TO NEAREST  
PROPERTY OR LEASE LINE, FT.  
(Also to nearest drig. unit line, if any)

830'

16. NO. OF ACRES IN LEASE

2,482.20

17. NO. OF ACRES ASSIGNED  
TO THIS WELL

~~150.54~~

18. DISTANCE FROM PROPOSED LOCATION\*  
TO NEAREST WELL, DRILLING, COMPLETED,  
OR APPLIED FOR, ON THIS LEASE, FT.

1-1/4 miles

19. PROPOSED DEPTH

3805'

20. ROTARY OR CABLE TOOLS

Rotary

21. ELEVATIONS (Show whether DF, RT, GR, etc.)

6960' GL; 6972' KB

SUBJECT TO COMPLIANCE WITH ATTACHED

"GENERAL REQUIREMENTS"

22. APPROX. DATE WORK WILL START\*

10/15/88

23.

PROPOSED CASING AND CEMENTING PROGRAM

This action is subject to technical and  
procedural review pursuant to 43 CFR 3165.3  
and appeal pursuant to 43 CFR 3165.4.

SIZE OF HOLE	SIZE OF CASING	WEIGHT PER FOOT	SETTING DEPTH	QUANTITY OF CEMENT
12-1/4"	9-5/8"	36#	250'	150 cu.ft. circ. to surface.
7-7/8"	5-1/2"	15.5#	3805'	595 cu.ft. circ. to surface.

Plan to drill with spud mud to set 250' of surface casing. Will then drill with water and gel-chem. mud to test the Fruitland coal zone at ± 3805'. Will run DIL-GR-SP and FCD-CNL-GR Caliper logs. If well appears productive, will set 5-1/2" casing at TD, cement in 1 stage, selectively perforate, frac, clean out after frac and complete with 2-7/8" tubing.

GAS IS NOT DEDICATED.

IN ABOVE SPACE DESCRIBE PROPOSED PROGRAM: If proposal is to deepen or plug back, give data on present productive zone and proposed new productive zone. If proposal is to drill or deepen directionally, give pertinent data on subsurface locations and measured and true vertical depths. Give blowout preventer program, if any.

24.

SIGNED

James S. Haysen

TITLE Field Supt.

DATE 9-12-88

(This space for Federal or State office use)

PERMIT NO.

APPROVAL DATE

APPROVED  
AS AMENDED

APPROVED BY

TITLE

CONDITIONS OF APPROVAL, IF ANY:

MAY 01 1989

AREA MANAGER

NMOC

\*See Instructions On Reverse Side

## OIL CONSERVATION DIVISION

STATE OF NEW MEXICO  
ENERGY AND MINERALS DEPARTMENTP. O. BOX 2088  
SANTA FE, NEW MEXICO 87501Form C-102  
Revised 10-1-78

All distances must be from the outer boundaries of the Section.

Operator Nassau Resources, Inc.		Lease Carracas Unit 31 B.		Well No. 5
Unit Letter E	Section 31	Township 32 North	Range 4 West	County Rio Arriba
Actual Footage Location of Well: 1770 feet from the North line and 830 feet from the West line				
Ground Level Elev. 6960	Producing Formation Fruitland	Pool Basin Fruitland Coal	Dedicated Acres: 300.96 Acres	

1. Outline the acreage dedicated to the subject well by colored pencil or hachure marks on the plat below.
2. If more than one lease is dedicated to the well, outline each and identify the ownership thereof (both as to working interest and royalty).
3. If more than one lease of different ownership is dedicated to the well, have the interests of all owners been consolidated by communitization, unitization, force-pooling, etc?

☒ Yes ☐ No If answer is "yes," type of consolidation Unitization - Carracas Unit

If answer is "no," list the owners and tract descriptions which have actually been consolidated. (Use reverse side of this form if necessary.) \_\_\_\_\_

No allowable will be assigned to the well until all interests have been consolidated (by communitization, unitization, forced-pooling, or otherwise) or until a non-standard unit, eliminating such interests, has been approved by the Division.

NM 30015 Kindermac Partners 100%	
1770'	
830'	
SECTION	31

RECEIVED  
BLM MAIL ROOM  
FEB -1 AM 9:26  
FARMINGTON RESURVEY AREA  
FARMINGTON, NEW MEXICO

## CERTIFICATION

I hereby certify that the information contained herein is true and complete to the best of my knowledge and belief.

*Fran Perrin*

Name

Fran Perrin

Position

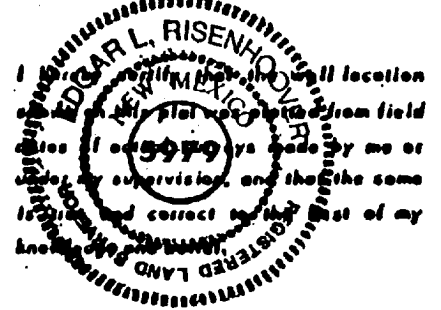
Admin. Asst.

Company

Nassau Resources, Inc.

Date

1/31/89



Date Surveyed

August 25, 1988

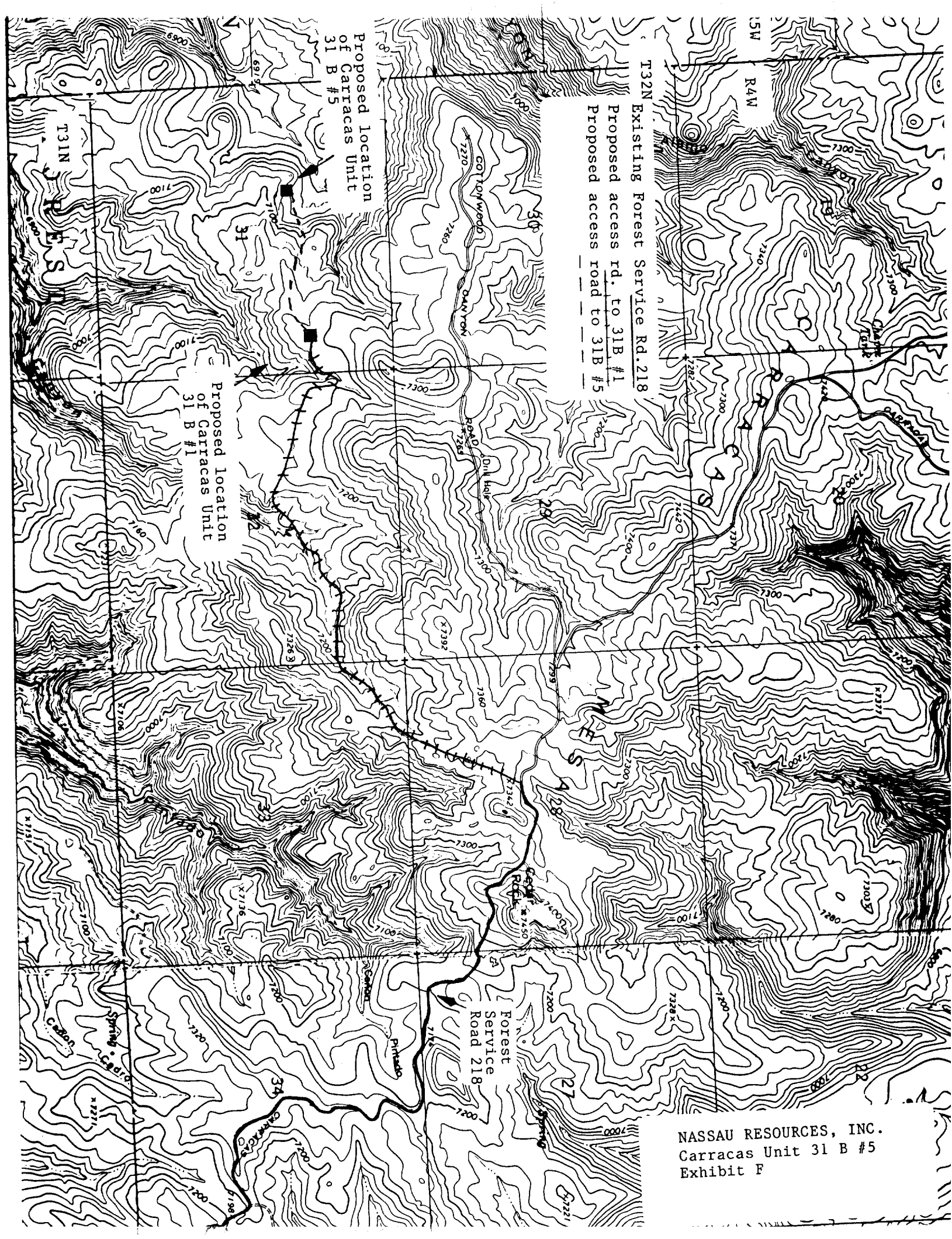
Registered Professional Engineer  
and/or Land Surveyor*Edgar L. Risenhoover*  
Certificate No. 5070

T32N Existing Forest Service Rd. 218  
Proposed access rd. to 31B #1  
Proposed access road to 31B #5

Proposed location  
of Carracas Unit  
31 B #5

Proposed location  
of Carracas Unit  
31 B #1

NASSAU RESOURCES, INC.  
Carracas Unit 31 B #5  
Exhibit F



T. 32 N.

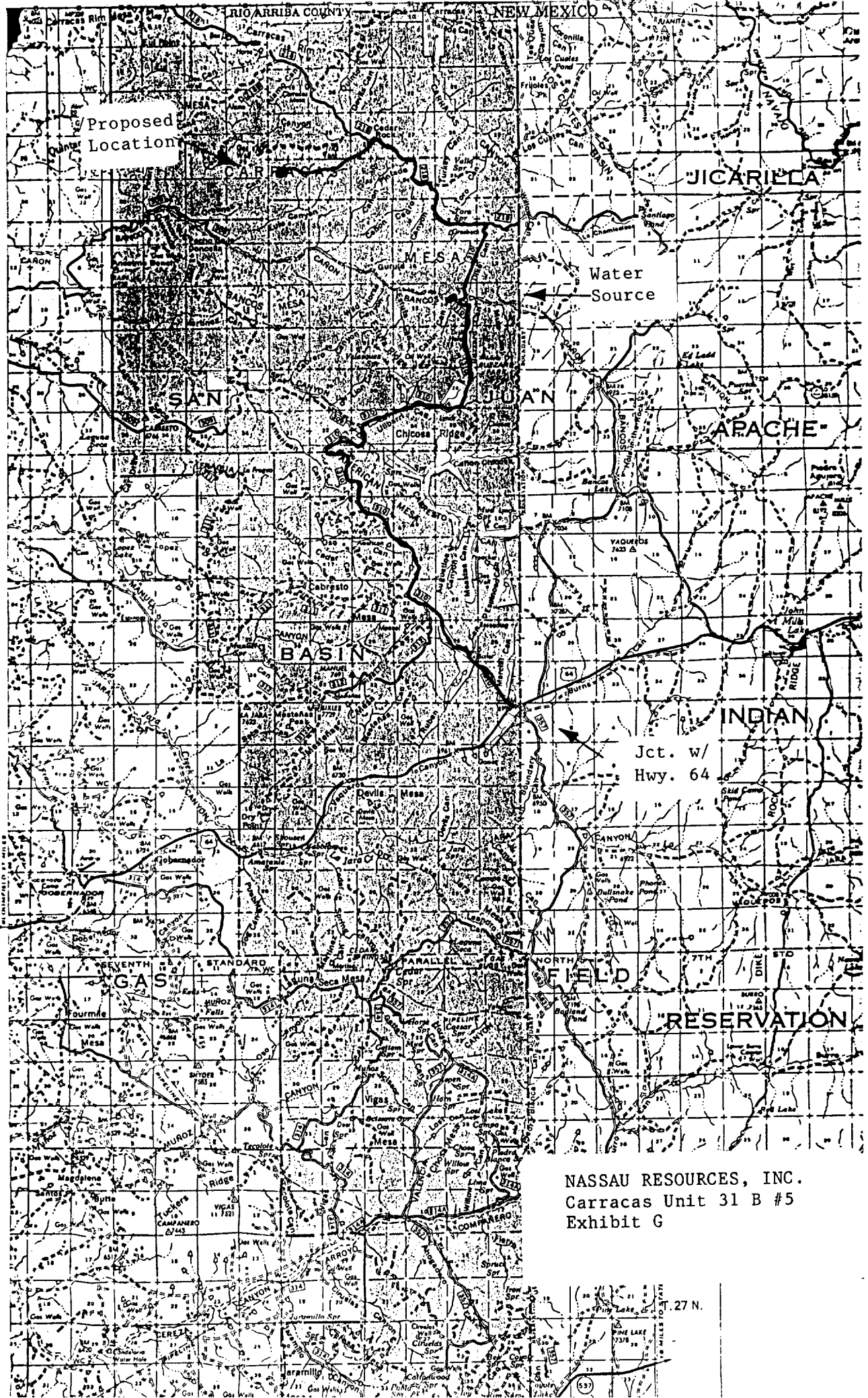
T. 31 N.

T. 30 N.

T. 29 N.

T. 28 N.

T. 27 N.



NASSAU RESOURCES, INC.  
Carracas Unit 31 B #5  
Exhibit G

T. 27 N.