

UNITED STATES
DEPARTMENT OF THE INTERIOR
BUREAU OF LAND MANAGEMENT

APPLICATION FOR PERMIT TO DRILL, DEEPEN, OR PLUG BACK

1a. TYPE OF WORK

DRILL ☒

DEEPEN ☐

PLUG BACK ☒

b. TYPE OF WELL

OIL
WELL ☐

GAS
WELL ☒

OTHER

2. NAME OF OPERATOR

NASSA/RESOURCES, INC.

3. ADDRESS OF OPERATOR

P. O. Box 809, Farmington, N.M. 87499

4. LOCATION OF WELL (Report location clearly and in accordance with any State requirements.)

At surface

1655' FNL - 1185' FWL
At proposed prod. zone

14. DISTANCE IN MILES AND DIRECTION FROM NEAREST TOWN OR POST OFFICE*

± 31 Miles N. of Gobernador, N.M.

15. DISTANCE FROM PROPOSED*
LOCATION TO NEAREST
PROPERTY OR LEASE LINE, FT.
(Also to nearest drig. unit line, if any)

1185'

18. DISTANCE FROM PROPOSED LOCATION*
TO NEAREST WELL, DRILLING, COMPLETED,
OR APPLIED FOR, ON THIS LEASE, FT.

2/3 mile

16. NO. OF ACRES IN LEASE

2,480.0

19. PROPOSED DEPTH

4040'

17. NO. OF ACRES ASSIGNED
TO THIS WELL

160.0

20. ROTARY OR CABLE TOOLS

Rotary

21. ELEVATIONS (Show whether DF, RT, GR, etc.)

7333' GL; - 7342' KB

DRILLING OPERATIONS AUTHORIZED ARE
SUBJECT TO COMPLIANCE WITH ATTACHED

22. APPROX. DATE WORK WILL START*

9/88

23.

PROPOSED CASING AND CEMENTING PROGRAM

This action is subject to technical and
procedural review pursuant to 43 CFR 3165.3
and appeal pursuant to 43 CFR 3165.4.

SIZE OF HOLE	SIZE OF CASING	WEIGHT PER FOOT	SETTING DEPTH	
12-1/4"	9-5/8"	36#	250'	150 cu.ft. circ. to surface.
7-7/8"	5-1/2"	15.5#	4040'	876 cu.ft. circ. to surface.

Plan to drill with spud mud to set 250' of surface casing. Will then drill with water and gel-chem. mud to test the Fruitland coal zone at ± 4040'. Will run DIL- GR-SP and FDC-CNL-GR Caliper logs. If well appears productive, will set 5-1/2" casing at TD, cement in 1 stage, selectively perforate, frac, clean out after frac and complete with 2-7/8" tubing.

GAS IS NOT DEDICATED.

RECEIVED

MAY 04 1989

OIL CON. DIV.
DIST. 3

IN ABOVE SPACE DESCRIBE PROPOSED PROGRAM: If proposal is to deepen or plug back, give data on present productive zone and proposed new productive zone. If proposal is to drill or deepen directionally, give pertinent data on subsurface locations and measured and true vertical depths. Give blowout preventer program, if any.

24.

SIGNED

James S. Hazen

TITLE

Field Supt.

DATE

8/17/88

(This space for Federal or State office use)

PERMIT TO

APPROVAL DATE

APPROVED BY

TITLE

DATE

CONDITIONS OF APPROVAL, IF ANY:

R-8844(1054)

(e)

*See Instructions On Reverse Side

All distances must be from the outer boundaries of the Section.

Operator Nassau Resources, Inc.			Lease Carracas Unit 21-B			Well No. 5		
Unit Letter E	Section 21	Township 32 North		Range 4 West	County Rio Arriba			
Actual Footage Location of Well								
1655 feet from the North line and			1185 feet from the West line					
Ground Level Elev. 7335	Producing Formation Fruitland		Pool Basin Fruitland Coal			Dedicated Acreage 320 Acres		

1. Outline the acreage dedicated to the subject well by colored pencil or hatchure marks on the plat below.
2. If more than one lease is dedicated to the well, outline each and identify the ownership thereof (both as to working interest and royalty).
3. If more than one lease of different ownership is dedicated to the well, have the interests of all owners been consolidated by communitization, unitization, force-pooling, etc?


☒ Yes ☐ No If answer is "yes," type of consolidation Carracas Unit - Unitization

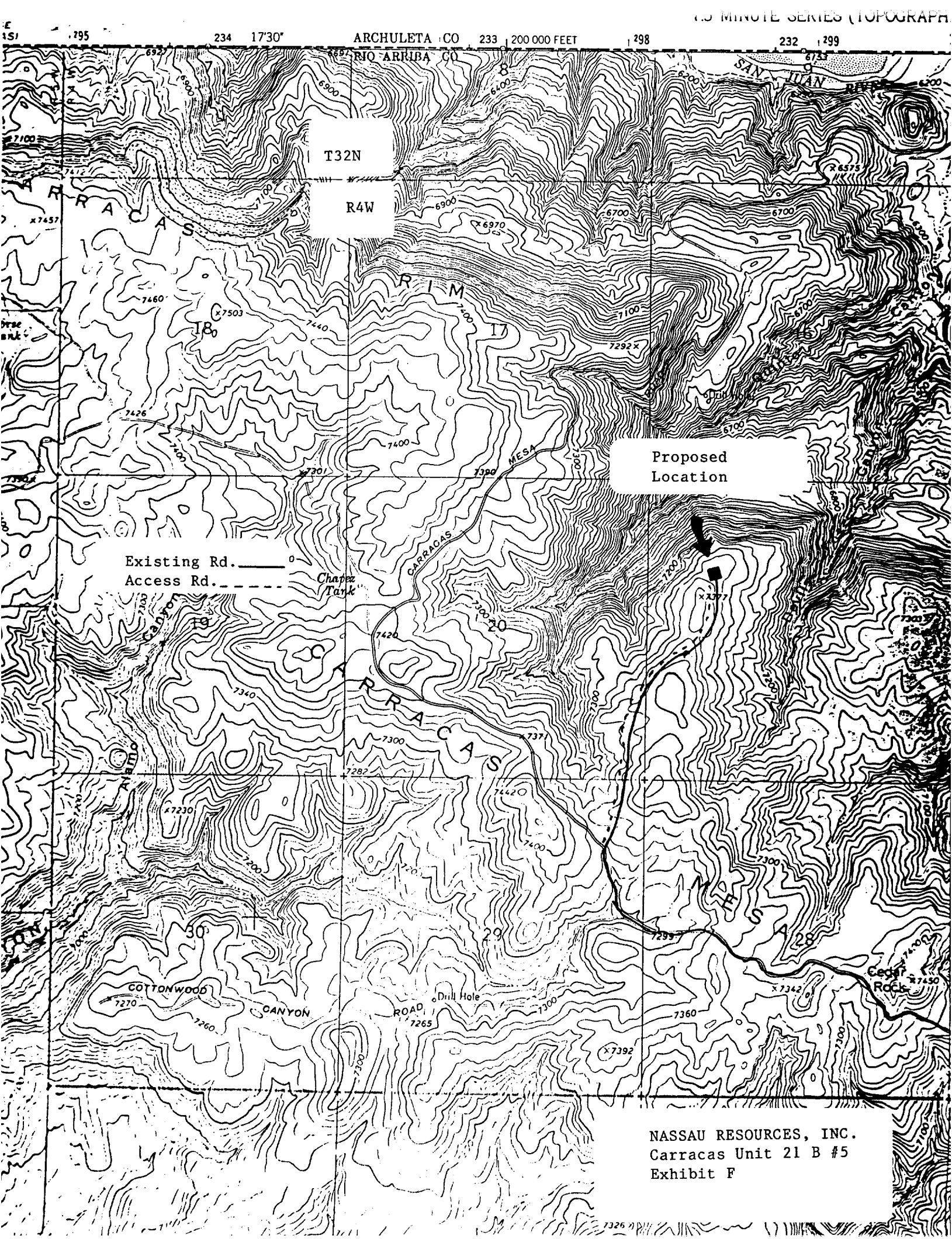
If answer is "no," list the owners and tract descriptions which have actually been consolidated. (Use reverse side of this form if necessary.)

No allowable will be assigned to the well until all interests have been consolidated (by communitization, unitization, forced-pooling, or otherwise) or until a non-standard unit, eliminating such interests, has been approved by the Division.

NM 30014 Kindermac Partners	
1655'	1185'
SECTION 21	
OIL CO.	
DIST.	

RECEIVED
MAY 10 1988
FARMINGTON, NEW MEXICO

CERTIFICATION	
I hereby certify that the information contained herein is true and complete to the best of my knowledge and belief.	
<i>Fran Perrin</i>	
Name	Fran Perrin
Position	Admin. Asst.
Company	Nassau Resources, Inc.
Date	12/8/88
	
Date Surveyed	July 28, 1988
Registered Professional Engineer and/or Land Surveyor	
<i>Edgar L. Risenhoover</i>	
Certificate No.	5979



T32N

R4W

Proposed
Location

Existing Rd. ——— 0
Access Rd. - - - - -

Chaparral
Tank

NASSAU RESOURCES, INC.
Carracas Unit 21 B #5
Exhibit F

T. 32 N.

Proposed
Location

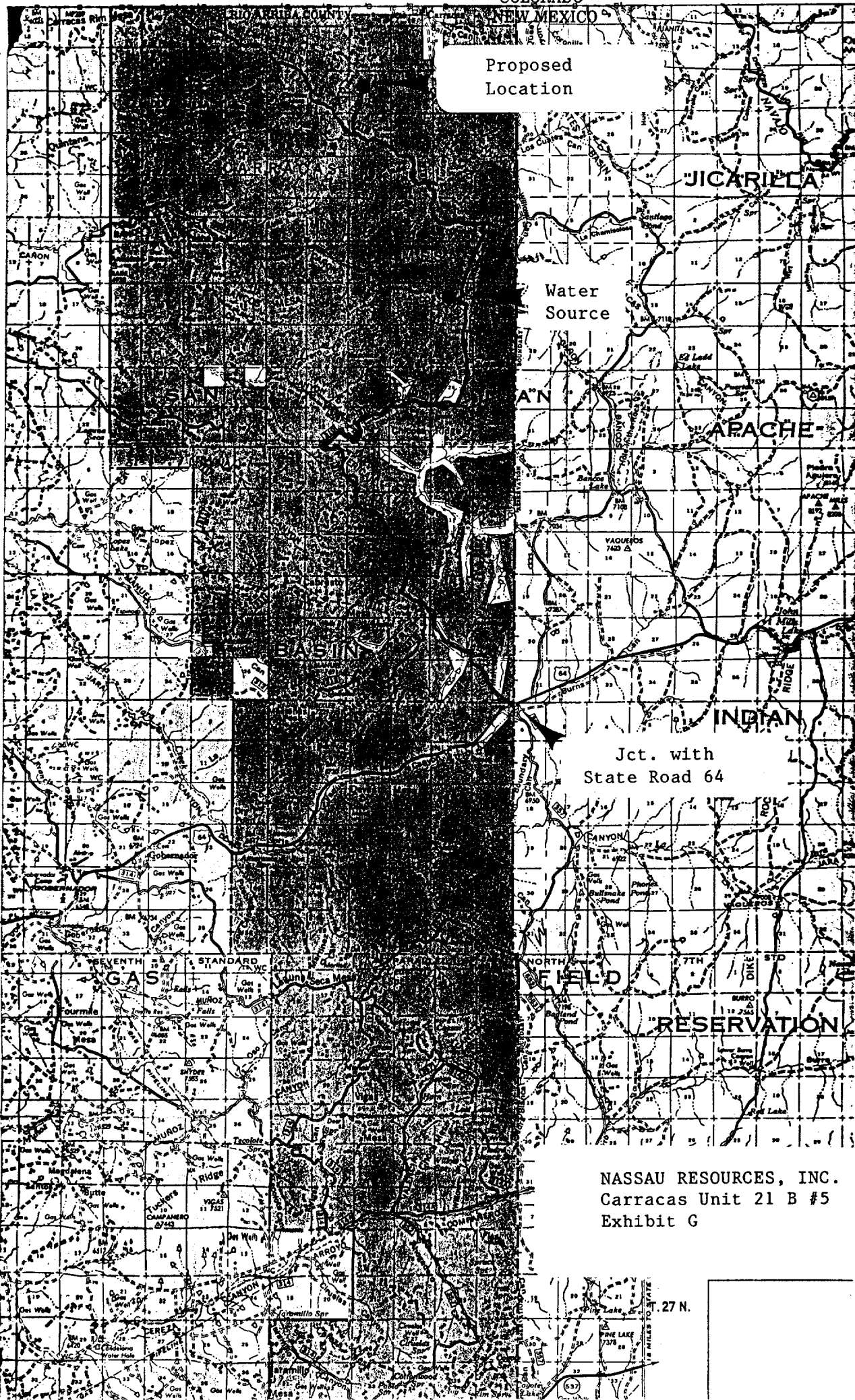
T. 31 N.

T. 30 N.

T. 29 N.

T. 28 N.

T. 27 N.



Water
Source

Jct. with
State Road 64

NASSAU RESOURCES, INC.
Carracas Unit 21 B #5
Exhibit G

T. 27 N.