

Form 3160-3
(November 1983)
(formerly 9-331C)

SUBMIT IN TRIPLICATE*
(Other instructions on
reverse side)

Form approved.
Budget Bureau No. 1004-0136
Expires August 31, 1985

UNITED STATES
DEPARTMENT OF THE INTERIOR
BUREAU OF LAND MANAGEMENT

APPLICATION FOR PERMIT TO DRILL, DEEPEN, OR PLUG BACK

1a. TYPE OF WORK

DRILL ☒

DEEPEN ☐

PLUG BACK ☐

5. LEASE DESIGNATION AND SERIAL NO.

NM 28277

6. IF INDIAN, ALLOTTEE OR TRIBE NAME

7. UNIT AGREEMENT NAME

Carracas Unit

8. FARM OR LEASE NAME

Carracas Unit 17 B

9. WELL NO.

#14

10. FIELD AND POOL OR WILDCAT

SW 1/4 Sec. 17, T32N, R4W NM
Fruitland coal

11. SEC., T., R., M., OR BLM.
AND SURVEY OR AREA

SW 1/4 Sec. 17, T32N, R4W NM

12. COUNTY OR PARISH 13. STATE

Rio Arriba

NM

b. TYPE OF WELL

OIL
WELL ☐

GAS
WELL ☒

OTHER

SINGLE
ZONE ☒

MULTIPLE
ZONE ☐

2. NAME OF OPERATOR

NASSAU RESOURCES, INC.

3. ADDRESS OF OPERATOR

P.O. Box 809, Farmington, N.M. 87499

4. LOCATION OF WELL (Report location clearly and in accordance with any State requirements.)*

At surface

790' FSL - 1850' FWL

At proposed prod. zone

14. DISTANCE IN MILES AND DIRECTION FROM NEAREST TOWN OR POST OFFICE*

± 33 miles N. of Gobernador, N.M.

15. DISTANCE FROM PROPOSED*

LOCATION TO NEAREST
PROPERTY OR LEASE LINE, FT.
(Also to nearest drlg. unit line, if any)

790'

16. NO. OF ACRES IN LEASE

2,525.47

17. NO. OF ACRES ASSIGNED
TO THIS WELL

160.0

18. DISTANCE FROM PROPOSED LOCATION*
TO NEAREST WELL, DRILLING, COMPLETED,
OR APPLIED FOR, ON THIS LEASE, FT.

1 mile

19. PROPOSED DEPTH

4140'

20. ROTARY OR CABLE TOOLS

Rotary

21. ELEVATIONS (Show whether DF, RT, GR, etc.)

7435' GL; 7447' KB

DRILLING OPERATIONS AUTHORIZED ARE

SUBJECT TO COMPLIANCE WITH ATTACHED

This action is subject to technical and

23. PROPOSED CASING AND CEMENTING PROGRAM procedural review pursuant to 43 CFR 3165.3 and appeal pursuant to 43 CFR 3165.4.

SIZE OF HOLE	SIZE OF CASING	WEIGHT PER FOOT	SETTING DEPTH	QUANTITY OF CEMENT
12-1/4"	9-5/8"	36#	250'	150 cu.ft. circ. to surface
7-7/8"	5-1/2"	15.5#	4140'	897 cu.ft. circ. to surface

Plan to drill with spud mud to set 250' of surface casing. Will then drill with water and gel-chem. mud to test the Fruitland coal zone at ± 4140'. Will run DIL-GR-SP and FDC-CNL-GR Caliper logs. If well appears productive, will set 5-1/2" casing at TD, cement in 1 stage, selectively perforate, frac, clean out after frac and complete with 2-7/8" tubing.

RECEIVED

MAY 04 1989

OIL CON. DIV
DIST. 3

GAS IS NOT DEDICATED.

IN ABOVE SPACE DESCRIBE PROPOSED PROGRAM: If proposal is to deepen or plug back, give data on present productive zone and proposed new productive zone. If proposal is to drill or deepen directionally, give pertinent data on subsurface locations and measured and true vertical depths. Give blowout preventer program, if any.

24. SIGNED James S. Hazen TITLE Field Supt. DATE August 29, 1988

(This space for Federal or State office use)

PERMIT NO.

APPROVAL DATE

APPROVED BY

TITLE

DATE

CONDITIONS OF APPROVAL, IF ANY:

*See Instructions On Reverse Side

All distances must be from the outer boundaries of the Section.

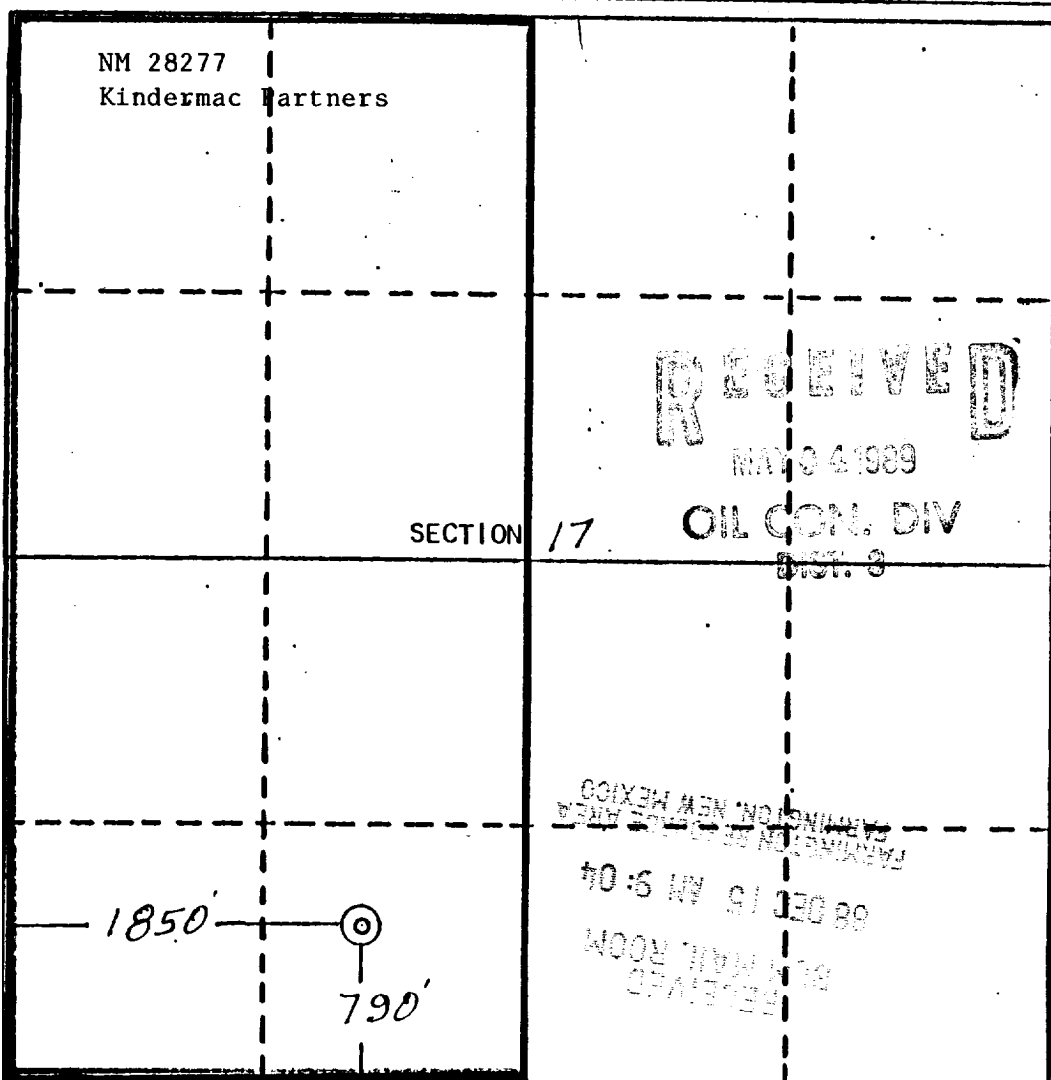
Operator Nassau Resources, Inc.			Lease Carracas Unit 17 B			Well No. 14
Unit Letter N	Section 17	Township 32 North	Range 4 West	County Rio Arriba		
Actual Footage Location of Well: 780 feet from the SOUTH line and 1850 feet from the WEST line						
Ground Level Elev. 7435	Producing Formation Fruitland		Pool Basin Fruitland Coal		Dedicated Acreage: 320 Acres	

1. Outline the acreage dedicated to the subject well by colored pencil or hatchure marks on the plat below.
2. If more than one lease is dedicated to the well, outline each and identify the ownership thereof (both as to working interest and royalty).
3. If more than one lease of different ownership is dedicated to the well, have the interests of all owners been consolidated by communitization, unitization, force-pooling, etc?

☒ Yes ☐ No If answer is "yes," type of consolidation Carracas Unit - Unitization

If answer is "no," list the owners and tract descriptions which have actually been consolidated. (Use reverse side of this form if necessary.)

No allowable will be assigned to the well until all interests have been consolidated (by communitization, unitization, forced-pooling, or otherwise) or until a non-standard unit, eliminating such interests, has been approved by the Division.



CERTIFICATION

I hereby certify that the information contained herein is true and complete to the best of my knowledge and belief.

Fran Perrin

Name

Fran Perrin

Position

Admin. Asst.

Company

Nassau Resources, Inc.

Date

12/8/88

I hereby certify that the location shown on this plat was taken from field notes of a survey made by me or under my supervision, and that the same is true and correct to the best of my knowledge and belief.

Date Surveyed

6-16-88

Registered Professional Engineer and/or Land Surveyor

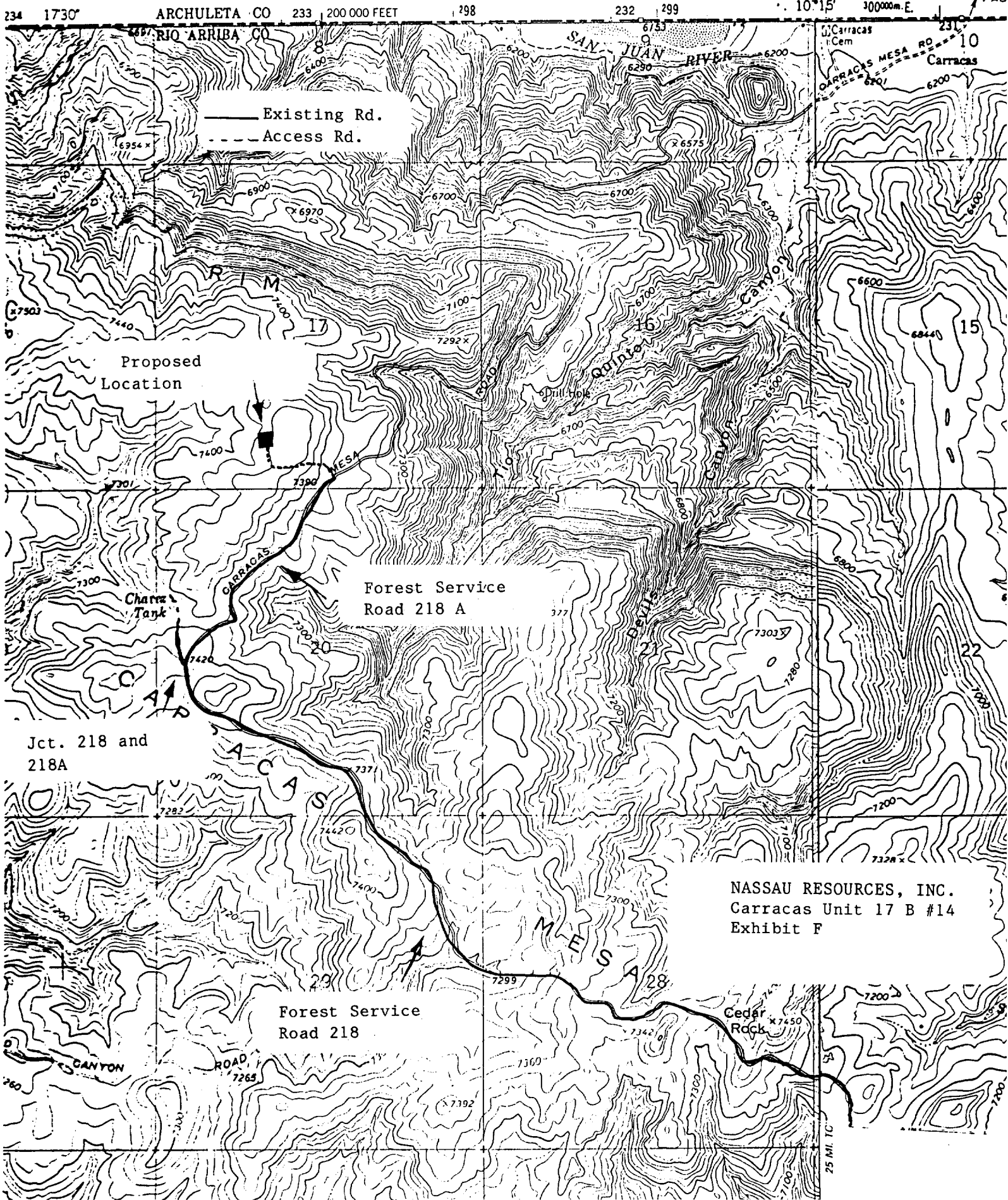
Edgar L. Risenhoover

Certificate No. 5979

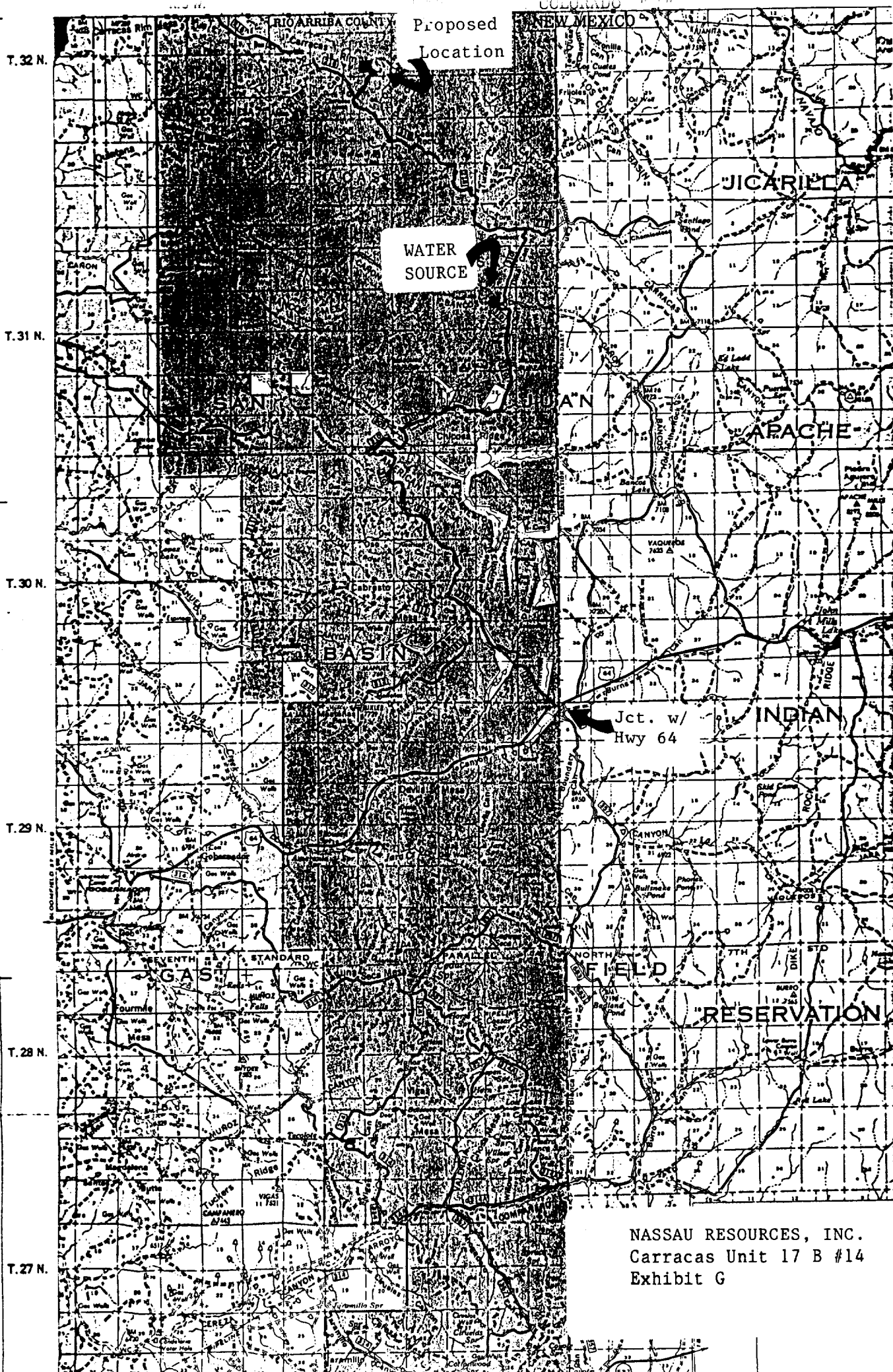
Edgar L. Risenhoover, I.S.

BANCOS MESA QUADRANGLE
NEW MEXICO
7.5 MINUTE SERIES (TOPOGRAPHIC)

4558 II
IPAGOSA JUNG
1:62,500



NASSAU RESOURCES, INC.
Carracas Unit 17 B #14
Exhibit F



Proposed
Location

WATER
SOURCE

Jct. w/
Hwy 64

NASSAU RESOURCES, INC.
Carracas Unit 17 B #14
Exhibit G