

6 BLM

1 DE

1 File

1 FS

Form 3.60-3
(November 1983)
(formerly 9-331C)

SUBMIT IN TRIPPLICATE*
(Other instructions on
reverse side)

Form approved.
Budget Bureau No. 1004-0136
Expires August 31, 1985

UNITED STATES
DEPARTMENT OF THE INTERIOR
BUREAU OF LAND MANAGEMENT

APPLICATION FOR PERMIT TO DRILL, DEEPEN, OR PLUG BACK

1a. TYPE OF WORK

DRILL ☒DEEPEN ☐PLUG BACK ☐

b. TYPE OF WELL

OIL
WELL ☐GAS
WELL ☒

OTHER

2. NAME OF OPERATOR

NASSAU RESOURCES, INC.

3. ADDRESS OF OPERATOR

P.O. Box 809, Farmington, N.M. 87499

4. LOCATION OF WELL (Report location clearly and in accordance with any State requirements.)*

At surface

230' FSL - 380' FWL

At proposed prod. zone

14. DISTANCE IN MILES AND DIRECTION FROM NEAREST TOWN OR POST OFFICE*

± 33 miles N. of Gobernador, N.M.

15. DISTANCE FROM PROPOSED*
LOCATION TO NEAREST
PROPERTY OR LEASE LINE, FT.
(Also to nearest drig. unit line, if any)

230'

18. DISTANCE FROM PROPOSED LOCATION*
TO NEAREST WELL, DRILLING, COMPLETED,
OR APPLIED FOR, ON THIS LEASE, FT. ± 100' to NW

Dry hole

16. NO. OF ACRES IN LEASE

1,440.81

19. PROPOSED DEPTH

4040'

17. NO. OF ACRES ASSIGNED
TO THIS WELL

160.0

20. ROTARY OR CABLE TOOLS

Rotary

21. ELEVATIONS (Show whether DF, RT, GR, etc.)

7269' GL; 7281' KB

22. APPROX. DATE WORK WILL START*

10/15/88

23.

PROPOSED CASING AND CEMENTING PROGRAM

This action is subject to the approval of the
procedural review process, to be completed by 10/15/88.
and appeal pursuant to 43 CFR 3135.3.

SIZE OF HOLE	SIZE OF CASING	WEIGHT PER FOOT	SETTING DEPTH	QUANTITY OF CEMENT
12-1/4"	9-5/8"	36#	250'	150 cu.ft. circ. to surface.
7-7/8"	5-1/2"	15.5#	4040'	876 cu.ft. circ. to surface.

Plan to drill with spud mud to set 250' of surface casing. Will then drill with water and gel-chem. mud to test the Fruitland coal zone at ± 4040'. Will run DIL-GR-SP and FDC-CNL-GR Caliper logs. If well appears productive, will set 5-1/2" casing at TD, cement in 1 stage, selectively perforate, frac, clean out after frac and complete with 2-7/8" tubing.

GAS IS NOT DEDICATED.

RECEIVED
MAY 24 1989

OIL CON. DIV.
DIST. 3

IN ABOVE SPACE DESCRIBE PROPOSED PROGRAM: If proposal is to deepen or plug back, give data on present productive zone and proposed new productive zone. If proposal is to drill or deepen directionally, give pertinent data on subsurface locations and measured and true vertical depths. Give blowout preventer program, if any.

24.

SIGNED

James S. Hazen

TITLE

Field Supt.

DATE

9/20/88

(This space for Federal or State office use)

PERMIT NO.

APPROVAL DATE

APPROVED BY

TITLE

CONDITIONS OF APPROVAL, IF ANY:

APPROVED
AS AMENDED

DATE

MAY 22 1989

AREA MANAGER

NSL-2627

*See Instructions On Reverse Side

Title 18 U.S.C. Section 1001, makes it a crime for any person knowingly and willfully to make to any department or agency of the United States any false, fictitious or fraudulent statements or representations as to any matter within its jurisdiction.

All distances must be from the outer boundaries of the Section.

Operator Nassau Resources, Inc.		Lease Carracas Unit 14 A			Well No. 13
Unit Letter M	Section 14	Township 32 North	Range 5 West	County Rio Arriba	
Actual Footage Location of Well: 230 feet from the South line and 380 feet from the West line					
Ground Level Elev. 7269	Producing Formation Fruitland	Pool Basin Fruitland Coal		Dedicated Acreage 320 Acres	

1. Outline the acreage dedicated to the subject well by colored pencil or hatchure marks on the plat below.
2. If more than one lease is dedicated to the well, outline each and identify the ownership thereof (both as to working interest and royalty).
3. If more than one lease of different ownership is dedicated to the well, have the interests of all owners been consolidated by communitization, unitization, force-pooling, etc?

☒ Yes ☐ No If answer is "yes," type of consolidation Carracas Unit - Unitization

If answer is "no," list the owners and tract descriptions which have actually been consolidated. (Use reverse side of this form if necessary.) _____

No allowable will be assigned to the well until all interests have been consolidated (by communitization, unitization, forced-pooling, or otherwise) or until a non-standard unit, eliminating such interests, has been approved by the Division.

RECEIVED MAIL ROOM 08 DEC 14 PM 1:35 FARMINGTON RESOURCE AREA FARMINGTON, NEW MEXICO		SECTION 14	
NM 29760 Amoco Production Co.	NM 59704 Jerome P. McHugh		
380 230			

CERTIFICATION

I hereby certify that the information contained herein is true and complete to the best of my knowledge and belief.

Fran Perrin

Name

Fran Perrin

Position

Admin. Asst.

Company

Nassau Resources, Inc.

Date

12/8/88

EDGAR L. RISENHOOBER
NEW MEXICO
3979
I hereby certify that the information shown on this plat was obtained from field notes of actual surveys made by me or under my supervision, and that the same is true and correct to the best of my knowledge and belief.

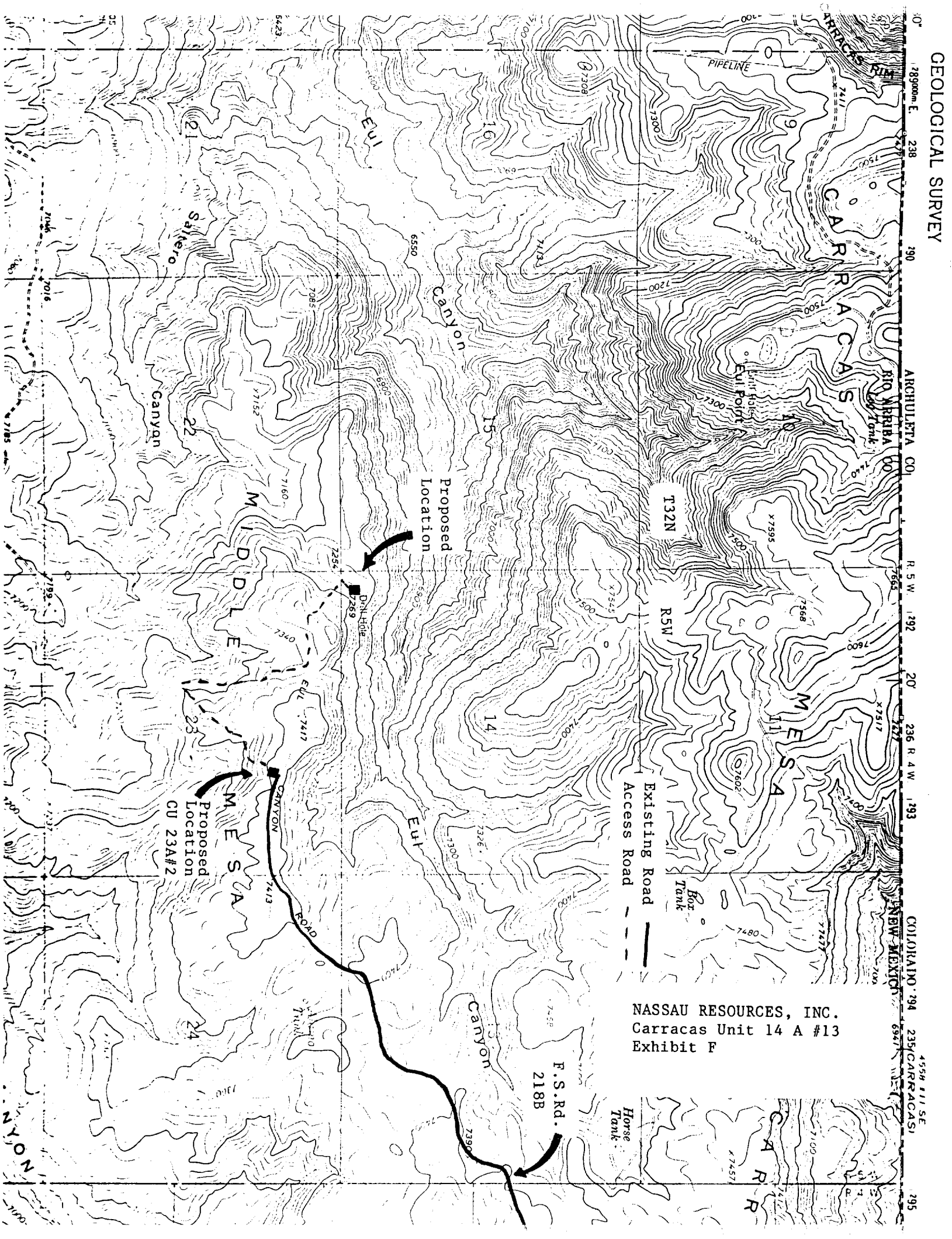
Date Surveyed

August 25, 1988

Registered Professional Engineer
and/or Land Surveyor

Edgar L. Risenhoover
Certificate No. 5979

GEOLOGICAL SURVEY



NASSAU RESOURCES, INC.
Carracas Unit 14 A #13
Exhibit F