

6 BLM, Fmn

1 DE

1 File

1 CNG

SUBMIT IN TRIPLICATE*

(Other instructions on reverse side)

30-029-24510
Form approved.
Budget Bureau No. 1004-0136
Expires August 31, 1985

Form 3150-3
(November 1983)
(formerly 9-331C)

UNITED STATES
DEPARTMENT OF THE INTERIOR
BUREAU OF LAND MANAGEMENT

APPLICATION FOR PERMIT TO DRILL, DEEPEN, OR PLUG BACK

1a. TYPE OF WORK

DRILL ☒DEEPEN ☐PLUG BACK ☐

b. TYPE OF WELL

OIL WELL ☐GAS WELL ☒

OTHER

SINGLE ZONE ☒MULTIPLE ZONE ☐

2. NAME OF OPERATOR

NASSAU RESOURCES, INC.

3. ADDRESS OF OPERATOR

P O BOX 809, Farmington, N.M. 87499

4. LOCATION OF WELL (Report location clearly and in accordance with any State requirements.)

At surface

1640' FSL - 920' FWL

At proposed prod. zone

14. DISTANCE IN MILES AND DIRECTION FROM NEAREST TOWN OR POST OF BUREAU OF LAND MANAGEMENT

+ 33-1/2 miles NE of Gobernador, N.M. FARMINGTON RESOURCE AREA

16. DISTANCE FROM PROPOSED* LOCATION TO NEAREST PROPERTY OR LEASE LINE, FT.

(Also to nearest drig. unit line, if any)

920'

18. NO. OF ACRES IN LEASE

320.0

17. NO. OF ACRES ASSIGNED TO THIS WELL

320.0

18. DISTANCE FROM PROPOSED LOCATION* TO NEAREST WELL, DRILLING, COMPLETED, OR APPLIED FOR, ON THIS LEASE, FT.

+12 miles

(proposed)

19. PROPOSED DEPTH

4150'

20. ROTARY OR CABLE TOOLS

Rotary

21. ELEVATIONS (Show whether DF, RT, GR, etc.)

7165' GL; 7178' KB

DRILLING OPERATIONS AUTHORIZED ARE
SUBJECT TO COMPLIANCE WITH ATTACHED

22. APPROX. DATE WORK WILL START*

8/15/89

23. PROPOSED CASING AND CEMENTING PROGRAM

This action is subject to technical and procedural review pursuant to 43 CFR 3165.3 and appeal pursuant to 43 CFR 3165.4.

SIZE OF HOLE	SIZE OF CASING	WEIGHT PER FOOT	SETTING DEPTH	
12-1/4"	9-5/8"	36#	350'	217 cu.ft. circ. to surface
8-3/4"	5-1/2"	15.5#	4150'	1580 cu.ft. circ. to surface

Plan to drill with spud mud to set 350' of surface casing. Will then drill with water and gel-chem. mud to test the Fruitland coal zone at +4150'. Will run IES, CDL and Microlog logs. If well appears productive, will set 5-1/2" casing at TD, cement in 1 stage, selectively perforate, frac, clean out after frac and complete with 2-7/8" tubing.

RECEIVED

JUL 24 1989

OIL CON. DIV.
DIST. 3

GAS IS NOT DEDICATED.

IN ABOVE SPACE DESCRIBE PROPOSED PROGRAM: If proposal is to deepen or plug back, give data on present productive zone and proposed new productive zone. If proposal is to drill or deepen directionally, give pertinent data on subsurface locations and measured and true vertical depths. Give blowout preventer program, if any.

24.

SIGNED

James S. Hazen

TITLE Field Supt.

DATE 6/16/89

(This space for Federal or State office use)

PERMIT NO.

APPROVAL DATE

APPROVED BY

TITLE

CONDITIONS OF APPROVAL, IF ANY:

APPROVED
AS AMENDED

JUL 16 1989

AREA MANAGER

NMOCD

*See Instructions On Reverse Side

Title 18 U.S.C. Section 1001, makes it a crime for any person knowingly and willfully to make to any department or agency of the United States any false, fictitious or fraudulent statements or representations as to any matter within its jurisdiction.

Submit to Appropriate
District Office
State Lease - 4 copies
Fee Lease - 3 copies

State of New Mexico
Energy, Minerals and Natural Resources Department

Form C-102
Revised 1-1-89

OIL CONSERVATION DIVISION

P.O. Box 2088

Santa Fe, New Mexico 87504-2088

DISTRICT I

P.O. Box 1980, Hobbs, NM 88240

DISTRICT II

P.O. Drawer DD, Artesia, NM 88210

DISTRICT III

1000 Rio Brazos Rd., Aztec, NM 87410

WELL LOCATION AND ACREAGE DEDICATION PLAT

All Distances must be from the outer boundaries of the section

Operator Nassau Resources, Inc.			Lease Carracas Unit 27 B		Well No. 12
Unit Letter L	Section 27	Township 32 North	Range 4 West	County Rio Arriba	
Actual Footage Location of Well: 1640 feet from the South line and 920 feet from the West line					
Ground level Elev. 7165	Producing Formation Fruitland Coal		Pool Basin Fruitland Coal	Dedicated Acreage: 320.0 Acres	

1. Outline the acreage dedicated to the subject well by colored pencil or hatchure marks on the plat below.

2. If more than one lease is dedicated to the well, outline each and identify the ownership thereof (both as to working interest and royalty).

3. If more than one lease of different ownership is dedicated to the well, have the interest of all owners been consolidated by communitization, unitization, force-pooling, etc.?

☒ Yes ☐ No If answer is "yes" type of consolidation Unitization - Carracas Unit

If answer is "no" list the owners and tract descriptions which have actually been consolidated. (Use reverse side of this form if necessary.)

No allowable will be assigned to the well until all interests have been consolidated (by communitization, unitization, forced-pooling, or otherwise) or until a non-standard unit, eliminating such interest, has been approved by the Division.

RECEIVED

JUN 19 1989

BUREAU OF LAND MANAGEMENT
FARMINGTON RESOURCE AREA

SECTION 27

NM 66864
Kindermac Partners 100%

920'

1640'

OPERATOR CERTIFICATION

I hereby certify that the information contained herein is true and complete to the best of my knowledge and belief.

Signature

Printed Name

James S. Hazen

Position

Field Supt.

Company

Nassau Resources, Inc.

Date

6/15/89

SURVEYOR CERTIFICATION

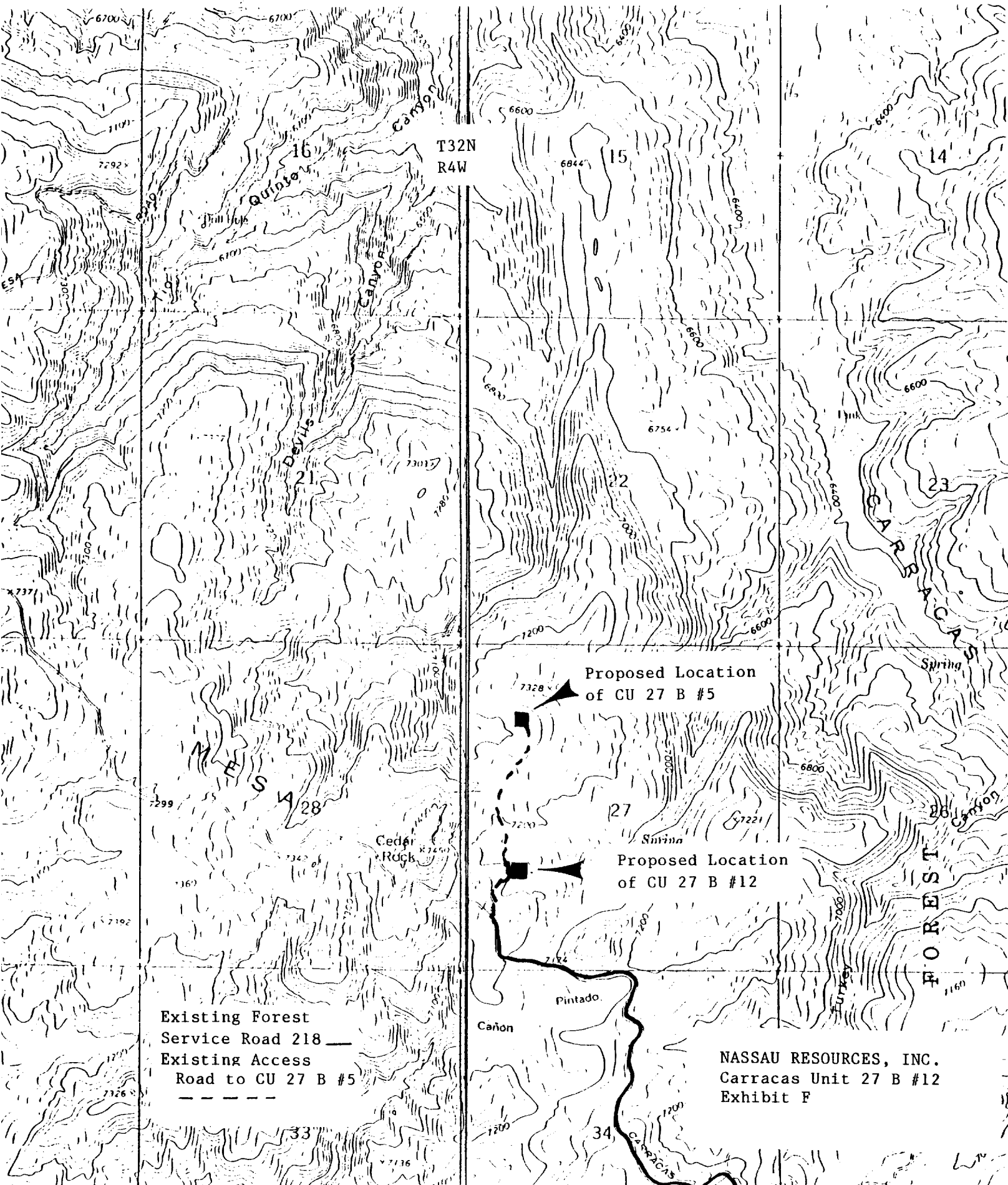
I hereby certify that the well location shown on this plat was plotted from field notes of actual surveys made by me or under my supervision, and that the same is true and correct to the best of my knowledge and belief.

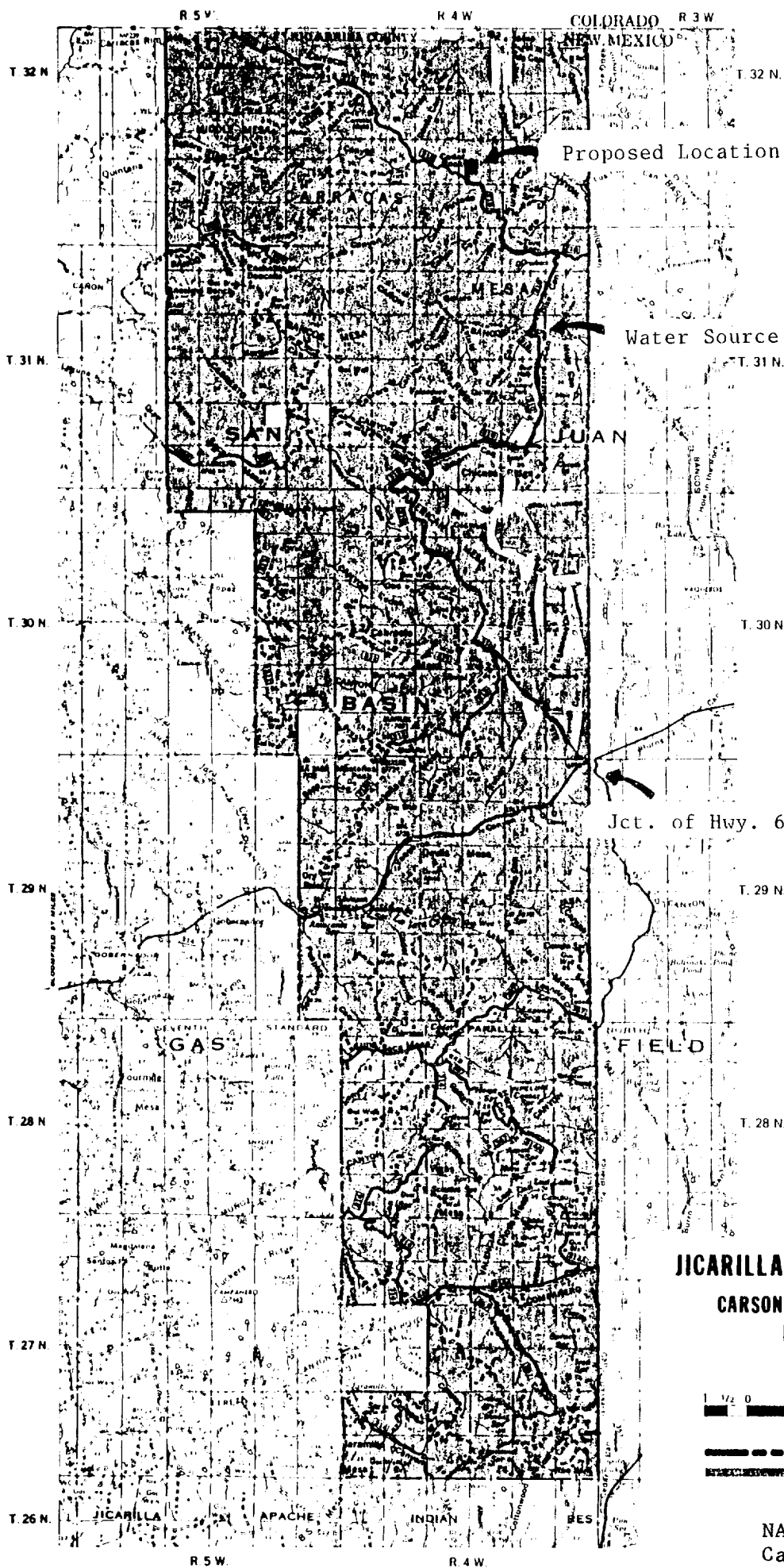
Date Surveyed

June 6, 1989

Signature & Seal of
Professional Surveyor

EDGAR RISENHOOVER
NEW MEXICO
5979
Edgar Risenhoover
5979
Edgar Risenhoover





JICARILLA RANGER DISTRICT
CARSON NATIONAL FOREST
NEW MEXICO
 1977

Scale
 1 1/2 0 1 2 3 4 5 Miles

LEGEND
 - - - - - Ranger District Boundary
 [Hatched Box] National Forest Land

NASSAU RESOURCES, INC.
 Carracas Unit 27 B #12
 Exhibit G