

Form 3160-3  
(November 1983)  
(formerly 9-331C)

SUBMIT IN TRIPPLICATE\*  
(Other instructions on  
reverse side)

Form approved.  
Budget Bureau No. 1004-0136  
Expires August 31, 1985

UNITED STATES  
DEPARTMENT OF THE INTERIOR  
BUREAU OF LAND MANAGEMENT

APPLICATION FOR PERMIT TO DRILL, DEEPEN, OR PLUG BACK

1a. TYPE OF WORK

DRILL ☒ X

DEEPEN ☐

PLUG BACK ☐

b. TYPE OF WELL

OIL  
WELL ☐

GAS  
WELL ☒ X

OTHER ☐

2. NAME OF OPERATOR

NASSAU RESOURCES, INC.

3. ADDRESS OF OPERATOR

P.O. BOX 809, Farmington, N.M. 87499

4. LOCATION OF WELL (Report location clearly and in accordance with any State requirements.)

At surface

840' FSL - 1190' FWL

At proposed prod. zone

14. DISTANCE IN MILES AND DIRECTION FROM NEAREST TOWN OR POST OFFICE\*

± 35 miles N. of Gobernador, N.M.

16. DISTANCE FROM PROPOSED\*  
LOCATION TO NEAREST  
PROPERTY OR LEASE LINE, FT.

(Also to nearest drilg. unit line, if any) 1190'

18. DISTANCE FROM PROPOSED LOCATION\*  
TO NEAREST WELL, DRILLING, COMPLETED,  
OR APPLIED FOR, ON THIS LEASE, FT.

± 2 miles

16. NO. OF ACRES IN LEASE

2080

19. PROPOSED DEPTH

3540'

17. NO. OF ACRES ASSIGNED  
TO THIS WELL

5/ 320.0

20. ROTARY OR CABLE TOOL

Rotary

21. ELEVATIONS (Show whether DF, RT, GR, etc.)

6835' GL; 6844' KB

22. APPROX. DATE WORK WILL START\*

1/89

23.

PROPOSED CASING AND CEMENTING PROGRAM

SIZE OF HOLE	SIZE OF CASING	WEIGHT PER FOOT	SETTING DEPTH	QUANTITY OF CEMENT
12-1/4"	9-5/8"	36#	250'	150 cu.ft. circ. to surface.
8-3/4"	5-1/2"	15.5#	3540'	899 cu.ft. circ. to surface.

Plan to drill with spud mud to set 250' of surface casing. Will then drill with water and gel-chem. mud to test the Fruitland coal zone at ± 3540'. Will run FDC-CNL-GR Caliper and Sonic Waveform logs. If well appears productive, will set 5-1/2" casing at TD, cement in 1 stage, selectively perforate, frac, clean out after frac and complete with 2-7/8" tubing.

GAS IS NOT DEDICATED.

RECEIVED

MAR 07 1990

IN ABOVE SPACE DESCRIBE PROPOSED PROGRAM: If proposal is to deepen or plug back, give data on present production zone and proposed new productive zone. If proposal is to drill or deepen directionally, give pertinent data on subsurface locations and measured or true vertical depth. Give blowout preventer program, if any.

24.

SIGNED James S. Hazen

TITLE Field Supt.

DATE 11/22/88

(This space for Federal or State office use)

PERMIT NO. \_\_\_\_\_

APPROVAL DATE \_\_\_\_\_

APPROVED BY \_\_\_\_\_

TITLE \_\_\_\_\_

CONDITIONS OF APPROVAL, IF ANY:

APPROVED  
AS AMENDED

MAR 02 1990

AREA MANAGER

\*See Instructions On Reverse Side

All distances must be from the outer boundaries of the Section.

Operator Nassau Resources, Inc.		Lease Carracas Unit 24 B		Well No. 13
Unit Letter M	Section 24	Township 32 North	Range 4 West	County Rio Arriba
Actual Footage Location of Well: 840 feet from the South line and 1190 feet from the West line				
Ground Level Elev. 6835	Producing Formation Fruitland	Pool Basin Fruitland Coal	Dedicated Acreage: 320.0 Acres	

1. Outline the acreage dedicated to the subject well by colored pencil or hatchure marks on the plat below.
2. If more than one lease is dedicated to the well, outline each and identify the ownership thereof (both as to working interest and royalty).
3. If more than one lease of different ownership is dedicated to the well, have the interests of all owners been consolidated by communitization, unitization, force-pooling, etc?

☒ Yes ☐ No If answer is "yes," type of consolidation Carracas Unit - Unitization

If answer is "no," list the owners and tract descriptions which have actually been consolidated. (Use reverse side of this form if necessary.) \_\_\_\_\_

No allowable will be assigned to the well until all interests have been consolidated (by communitization, unitization, forced-pooling, or otherwise) or until a non-standard unit, eliminating such interests, has been approved by the Division.

RECEIVED MAR 07 1990 OIL CON. DIV. DIST. 3	
SECTION 24	
NM 30585 Kindermac Partners 100%	
1190'	840'

CERTIFICATION

I hereby certify that the information contained herein is true and complete to the best of my knowledge and belief.

Name  
James S. Hazen  
Position  
Field Supt.

Company  
Nassau Resources, Inc.

Date  
11/22/88

I hereby certify that the information shown on this plat was plotted from field notes of actual survey made by me or under my supervision and that the same is true and correct to the best of my knowledge and belief.

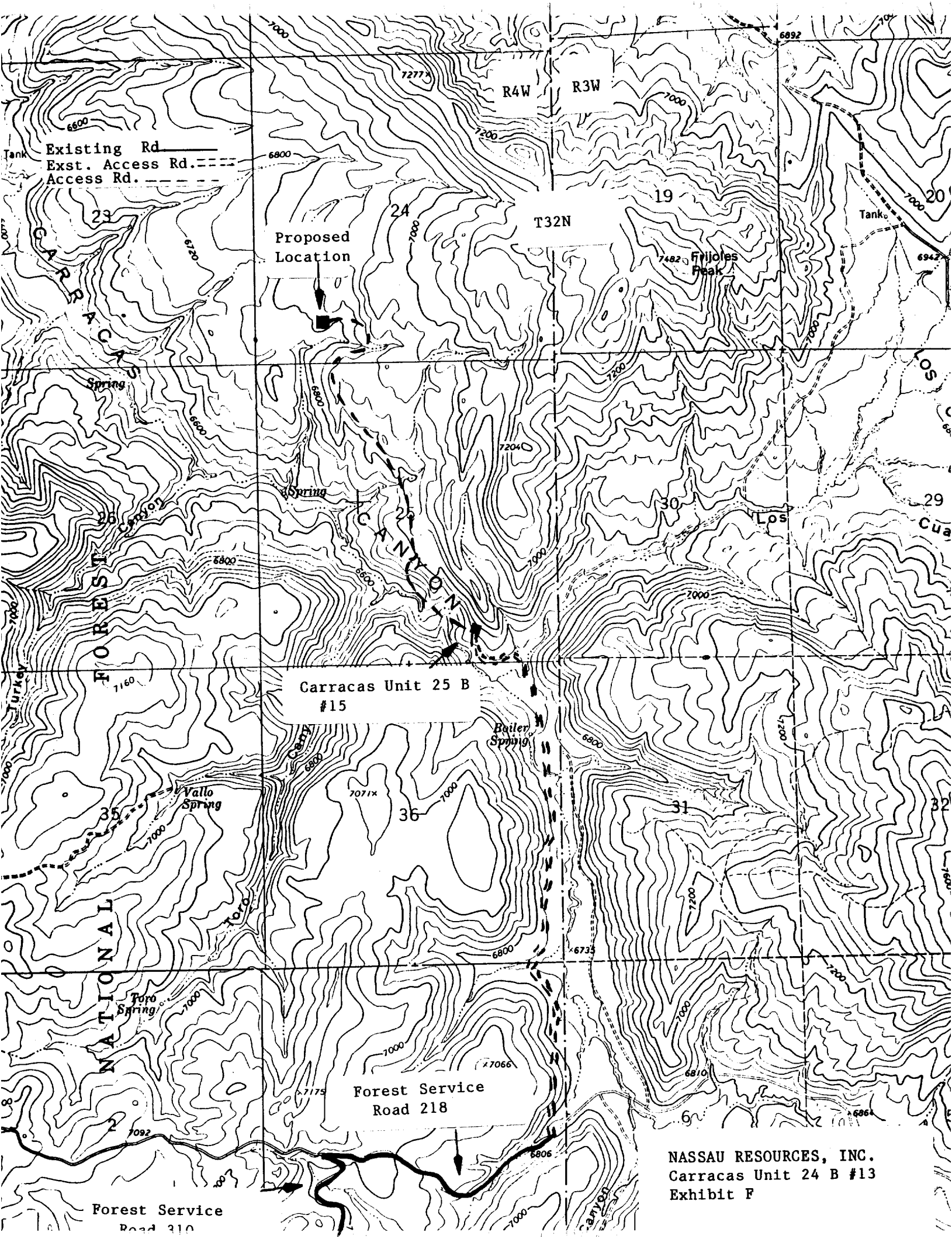
Date Surveyed  
October 13, 1988

Registered Professional Engineer  
and/or Land Surveyor

Edgar L. Risenhoover

Certificate No. 5979

Edgar L. Risenhoover, I.S.



NASSAU RESOURCES, INC.  
Carracas Unit 24 B #13  
Exhibit F