

UNITED STATES
DEPARTMENT OF THE INTERIOR
BUREAU OF LAND MANAGEMENT

RECEIVED
BLM

APPLICATION FOR PERMIT TO DRILL, DEEPEN, OR PLUG BACK

1a. TYPE OF WORK

DRILL ☒

DEEPEN ☐

PLUG BACK ☐

b. TYPE OF WELL

OIL WELL ☐

GAS WELL ☒

OTHER

2. NAME OF OPERATOR

NASSAU RESOURCES, INC.

3. ADDRESS OF OPERATOR

P O BOX 809, Farmington, N.M. 87499

4. LOCATION OF WELL (Report location clearly and in accordance with any State requirements.)

At surface

640' FSL - 710' FEL

At proposed prod. zone

14. DISTANCE IN MILES AND DIRECTION FROM NEAREST TOWN OR POST OFFICE*

+ 30 miles N. of Gobernador, N.M.

15. DISTANCE FROM PROPOSED*

LOCATION TO NEAREST
PROPERTY OR LEASE LINE, FT.
(Also to nearest drlg. unit line, if any)

640'

16. NO. OF ACRES IN LEASE

1,760.0

17. NO. OF ACRES ASSIGNED
TO THIS WELL

320.0

18. DISTANCE FROM PROPOSED LOCATION*
TO NEAREST WELL, DRILLING, COMPLETED,
OR APPLIED FOR, ON THIS LEASE, FT.

1/4 mile

19. PROPOSED DEPTH

3825'

20. ROTARY OR CABLE TOOLS

Rotary

21. ELEVATIONS (Show whether DF, RT, GR, etc.)

6978' GL; 6989' KB

22. APPROX. DATE WORK WILL START*

5/92

23.

PROPOSED CASING AND CEMENTING PROGRAM DRILLING OPERATIONS AUTHORIZED ARE

SIZE OF HOLE	SIZE OF CASING	WEIGHT PER FOOT	SETTING DEPTH	QUANTITY OF CEMENT
12-1/4"	9-5/8"	36#	250'	150 cu.ft. circ. to surface.
8-3/4"	5-1/2"	15.5#	3825'	899 cu.ft. circ. to surface.

Plan to drill with spud mud to set 250' of surface casing. Will then drill with water and gel-chem. mud to test the Fruitland coal zone at \pm 3825'. Will run FDC-CNL-GR Caliper and Sonic Waveform logs. If well appears productive, will set 5-1/2" casing at TD, cement in 1 stage, selectively perforate, frac, clean out after frac and complete with 2-7/8" tubing.

The previously approved APD on this well expired 5/16/91.
APD number is #30-039-24431.

The New Mexico Oil Conservation Division approved this as an unorthodox well location, 1/17/89, Order R-8840.

GAS IS NOT DEDICATED.

IN ABOVE SPACE DESCRIBE PROPOSED PROGRAM: If proposal is to deepen or plug back, give data on present productive zone and proposed new productive zone. If proposal is to drill or deepen directionally, give pertinent data on subsurface locations and measured and true vertical depths. Give blowout preventer program, if any.

24.

SIGNED

M. B. McHugh
M. B. McHugh

TITLE

Field Coord.

DATE

8-20-91

(This space for Federal or State office use)

PERMIT NO.

RECEIVED
NOV 25 1991

APPROVAL DATE

APPROVED
AS AMENDED

APPROVED BY

NOV 25 1991

TITLE

NOV 19 1991

CONDITIONS OF APPROVAL, IF ANY:

OIL CON. DIV.
DIST. 3

AREA MANAGER

See Instructions On Reverse Side

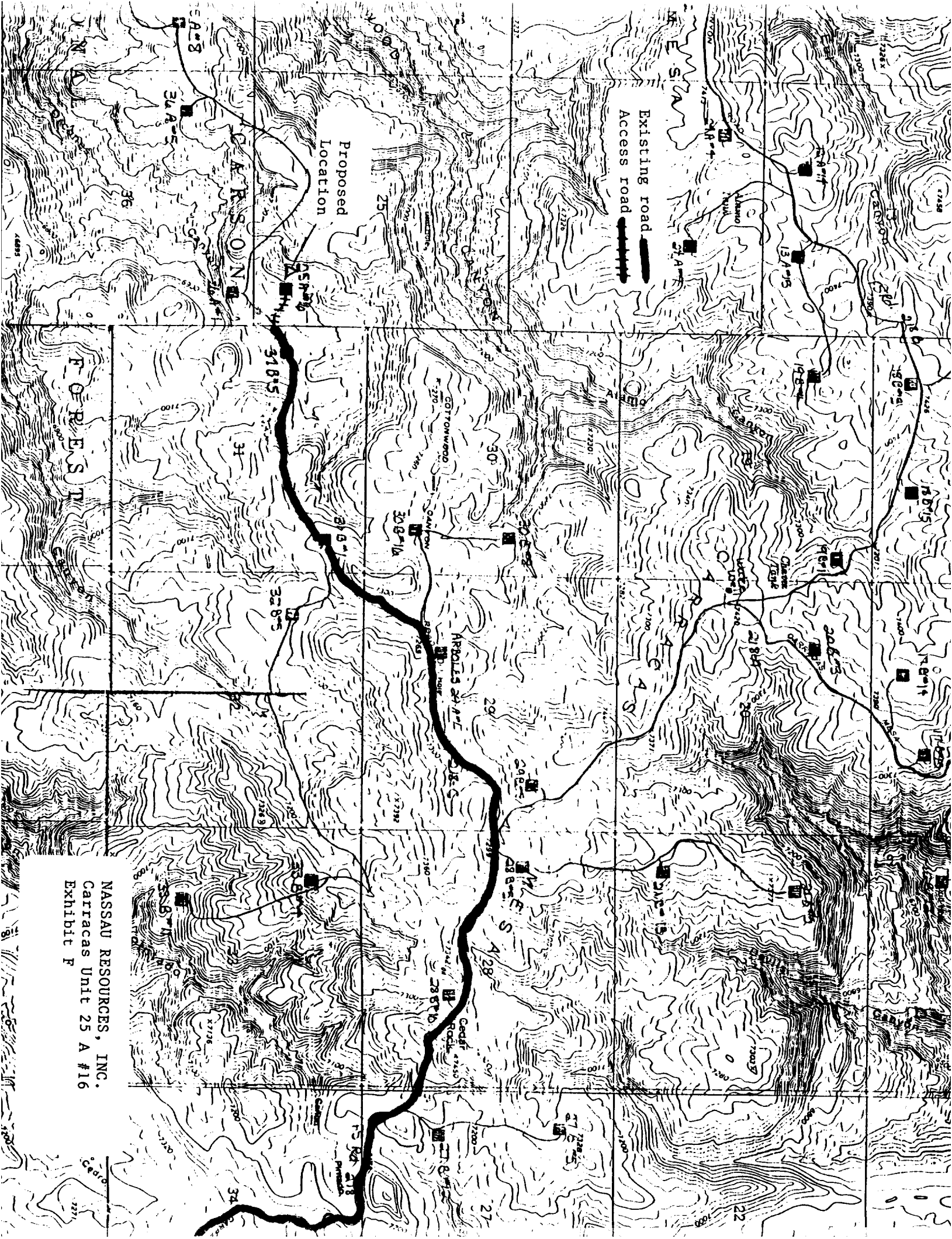
TEMPERATURE
RECORDING

734130101
L. J. J. J.
MOD. MOD. 10
C. J. J. J.

All distances must be from the outer boundaries of the Section.

No allowable will be assigned to the well until all interests have been consolidated (by communitization, unitization, forced-pooling, or otherwise) or until a non-standard unit, eliminating such interests, has been approved by the Division.

<p align="center">CERTIFICATION</p> <p>I hereby certify that the information contained herein is true and complete to the best of my knowledge and belief.</p>	
<p>Name <u>James S. Hazen</u></p>	
<p>Position <u>Field Supt.</u></p>	
<p>Company <u>Nassau Resources, Inc.</u></p>	
<p>Date <u>11/22/88</u></p>	
<p align="center"> </p>	
<p>Date Surveyed <u>August 24, 1988</u></p>	
<p>Registered Professional Engineer and/or Land Surveyor</p>	
<p><u>Edgar L. Risenhoover</u></p>	
<p>Certificate No. <u>5979</u></p>	



Existing road
Access road

Proposed
Location

NASSAU RESOURCES, INC.
Carracas Unit 25 A #16
Exhibit F