

Form 3160-3  
(November 1983)  
(formerly 9-331C)

UNITED STATES  
DEPARTMENT OF THE INTERIOR  
BUREAU OF LAND MANAGEMENT

SUBMIT IN TRIPLICATE\*  
(Other instructions on  
reverse side)

Form approved.  
Budget Bureau No. 1004-0136  
Expires August 31, 1985

RECEIVED  
BLM

APPLICATION FOR PERMIT TO DRILL, DEEPEN, OR PLUG BACK

1a. TYPE OF WORK <b>DRILL</b> <input checked="" type="checkbox"/> <b>DEEPEN</b> <input type="checkbox"/> <b>PLUG BACK</b> <input type="checkbox"/>		5. LEASE DESIGNATION AND SERIAL NO. NM 59704	
b. TYPE OF WELL OIL WELL <input type="checkbox"/> GAS WELL <input checked="" type="checkbox"/> OTHER <input type="checkbox"/>		6. IF INDIAN, ALLOTTEE OR TRIBE NAME 65	
2. NAME OF OPERATOR NASSAU RESOURCES, INC.		7. UNIT AGREEMENT NAME NM Carracas Unit	
3. ADDRESS OF OPERATOR P O BOX 809, Farmington, N.M. 87499		8. FARM OR LEASE NAME Carracas Unit 36 A	
4. LOCATION OF WELL (Report location clearly and in accordance with any State requirements.) At surface 1450' FNL - 910' FWL At proposed prod. zone		9. WELL NO. #5	
14. DISTANCE IN MILES AND DIRECTION FROM NEAREST TOWN OR POST OFFICE* 30 miles north of Gobernador, NM		10. FIELD AND POOL, OR WILDCAT Basin Fruitland Coal	
15. DISTANCE FROM PROPOSED* LOCATION TO NEAREST PROPERTY OR LEASE LINE, FT. (Also to nearest drlg. unit line, if any) 910'	16. NO. OF ACRES IN LEASE 1,760.0	17. NO. OF ACRES ASSIGNED TO THIS WELL 320.0	
18. DISTANCE FROM PROPOSED LOCATION* TO NEAREST WELL, DRILLING, COMPLETED, OR APPLIED FOR, ON THIS LEASE, FT. 1-1/4 mi.	19. PROPOSED DEPTH 3675'	20. ROTARY OR CABLE TOOLS Rotary	
21. ELEVATIONS (Show whether DF, RT, GR, etc.) 6902' GL; 6914' KB This action is subject to technical and procedural review pursuant to 43 CFR 9405.3 and appeal procedure to 43 CFR 9405.5.		22. APPROX. DATE WORK WILL START* 5/92	
23. PROPOSED DRILLING OPERATIONS AUTHORIZED ARE SUBJECT TO COMPLIANCE WITH ATTACHED GENERAL REQUIREMENTS			
SIZE OF HOLE	SIZE OF CASING	WEIGHT PER FOOT	SETTING DEPTH
12-1/4"	9-5/8"	36#	250'
7-7/8"	5-1/2"	15.5#	3675'
		QUANTITY OF CEMENT	
		150 cu.ft. circ. to surface	
		800 cu.ft. circ. to surface	

Plan to drill with spud mud to set 250' of surface casing. Will then drill with water and gel chem. mud to test the Fruitland coal zone at  $\pm$  3675'. Will run FDC-CNL-GR Caliper and FDC-CNL-GR Caliper logs. If well appears productive, will set 5-1/2" casing at TD, cement in 1 stage, selectively perforate, frac, clean out after frac and complete with 2-7/8" tubing.

The previously approved APD on this well expired 5/1/91.  
API number is #30-039-24409.

The New Mexico Oil Conservation Division approved this as an unorthodox well location. Order No. R-8844.

GAS IS NOT DEDICATED.

IN ABOVE SPACE DESCRIBE PROPOSED PROGRAM: If proposal is to deepen or plug back, give data on present productive zone and proposed new productive zone. If proposal is to drill or deepen directionally, give pertinent data on subsurface locations and measured and true vertical depths. Give blowout preventer program, if any.

24.

SIGNED

TITLE

Field Coord.

DATE 8/22/91

(This space for Federal or State on lease)

PERMIT NO.

APPROVAL DATE

APPROVED BY

CONDITIONS OF APPROVAL, IF ANY:

RECEIVED

NOV 25 1991

TITLE

APPROVED  
AS AMENDED

NOV 19 1991

AREA MANAGER

OIL CON. DIV.  
DIST. 3

NMOC

\*See Instructions On Reverse Side

1978-1979

1978-1979

1978-1979

1978-1979

1978-1979

## OIL CONSERVATION DIVISION

STATE OF NEW MEXICO  
ENERGY AND MINERALS DEPARTMENT

P. O. BOX 2088

SANTA FE, NEW MEXICO 87501

Form C-102  
Revised 10-1-78  
RECEIVED  
BLM

All distances must be from the outer boundaries of the Section.


Operator Nassau Resources, Inc.			Lease Carracas Unit 36 A			91 AUG 26		Well No. AM 8: 55 5	
Unit Letter E	Section 36	Township 32 North	Range 5 West	County Rio Arriba					
Actual Footage Location of Well: 1450 feet from the North line and 910 feet from the West line									
Ground Level Elev. 6902	Producing Formation Fruitland		Pool Basin Fruitland Coal				Dedicated Acreages 320.0 Acres		

1. Outline the acreage dedicated to the subject well by colored pencil or hatchure marks on the plat below.
2. If more than one lease is dedicated to the well, outline each and identify the ownership thereof (both as to working interest and royalty).
3. If more than one lease of different ownership is dedicated to the well, have the interests of all owners been consolidated by communitization, unitization, force-pooling, etc?

☒ Yes ☐ No If answer is "yes," type of consolidation Unitization- Carracas Unit

If answer is "no," list the owners and tract descriptions which have actually been consolidated. (Use reverse side of this form if necessary.)

No allowable will be assigned to the well until all interests have been consolidated (by communitization, unitization, forced-pooling, or otherwise) or until a non-standard unit, eliminating such interests, has been approved by the Division.

1450'	
910' 	
NM 59704 Jerome P. McHugh 100%	
SECTION	36

RECEIVED  
NOV 25 1991  
OIL CON. DIV.  
DIST. 3

89 FEB -1 AM 9:31  
RECEIVED  
BLM MAIL ROOM

## CERTIFICATION

I hereby certify that the information contained herein is true and complete to the best of my knowledge and belief.

*Fran Perrin*

Name

Fran Perrin

Position

Admin. Asst.

Company

Nassau Resources, Inc.

Date

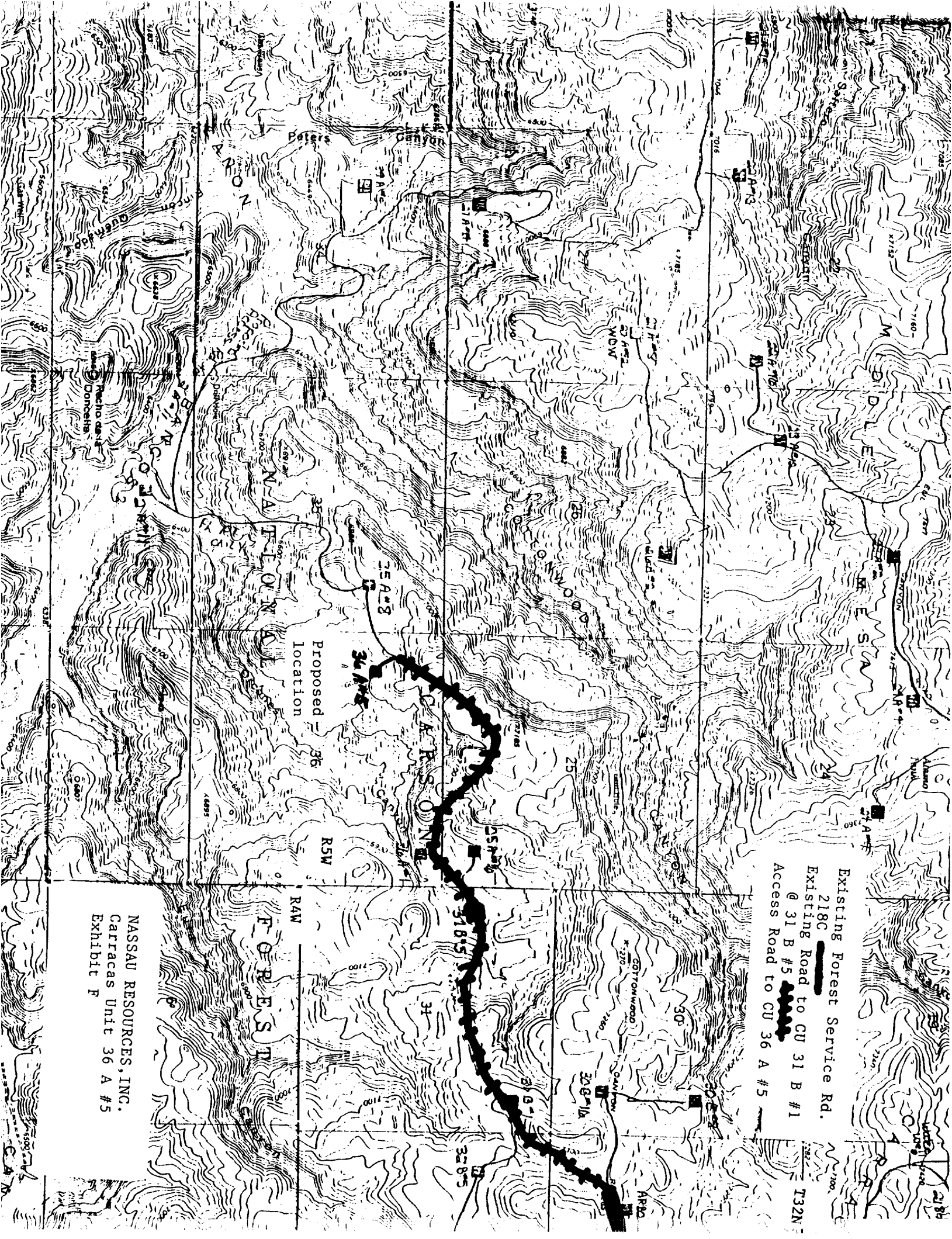
January 31, 1989

EDGAR L. RISENHOF  
NEW MEXICO  
5979  
I hereby certify that the well location shown on this plat was plotted from field notes of 1989, as made by me or under my supervision, and that the same are true and correct to the best of my knowledge and belief.

Date Surveyed

September 1, 1988

Registered Professional Engineer  
and/or Land Surveyor*Edgar L. Risenhof*



Existing Forest Service Rd.  
218C  
Existing Road to CU 31 B #1  
@ 31 B #5  
Access Road to CU 36 A #5

NASSAU RESOURCES, INC.  
Carracas Unit 36 A #5  
Exhibit F