

Form 3160-3  
(December 1990)

SUBMIT IN TRIPLICATE\*  
(Other Instructions on  
reverse side)

Form approved.  
Budget Bureau No. 1004-0136  
Expires: December 31, 1991

UNITED STATES  
DEPARTMENT OF THE INTERIOR  
BUREAU OF LAND MANAGEMENT

APPLICATION FOR PERMIT TO DRILL OR DEEPEN

1a. TYPE OF WORK

DRILL ☒

DEEPEN ☐

b. TYPE OF WELL

OIL  
WELL ☐

GAS  
WELL ☒

OTHER

SINGLE  
ZONE ☒

MULTIPLE  
ZONE ☐

2. NAME OF OPERATOR

NASSAU RESOURCES, INC. 15515

3. ADDRESS AND TELEPHONE NO.

P O BOX 809, Farmington, N.M. 87499

4. LOCATION OF WELL (Report location clearly and in accordance with any State requirements.)\*  
At surface

790' FSL & 790' FWL

At proposed prod. zone

14. DISTANCE IN MILES AND DIRECTION FROM NEAREST TOWN OR POST OFFICE\*

± 15 miles E SE of Arboles, Colorado

15. DISTANCE FROM PROPOSED\*

LOCATION TO NEAREST  
PROPERTY OR LEASE LINE, FT.  
(Also to nearest drlg. unit line, if any) 200'

16. NO. OF ACRES IN LEASE

2,522.12

17. NO. OF ACRES ASSIGNED  
TO THIS WELL

160.0

18. DISTANCE FROM PROPOSED LOCATION\*

TO NEAREST WELL, DRILLING, COMPLETED,  
OR APPLIED FOR, ON THIS LEASE, FT. 2000'

19. PROPOSED DEPTH

3770' KB

20. ROTARY OR CABLE TOOLS

Rotary

21. ELEVATIONS (Show whether DF, RT, GR, etc.) This action is subject to technical and  
6610' GR; 6623' KB procedural review pursuant to 43 CFR 3165.3  
and appeal pursuant to 43 CFR 3165.4.

22. APPROX. DATE WORK WILL START\*

10/1/92

23. PROPOSED CASING AND CEMENTING PROGRAM

DRILLING OPERATIONS AUTHORIZED ARE

SIZE OF HOLE	GRADE SIZE OF CASING	WEIGHT PER FOOT	SETTING DEPTH	QUANTITY OF CEMENT GENERAL REQUIREMENTS
12-1/4"	9-5/8"	36#	250'	150 cu.ft. circ. to surf.
7-7/8"	5-1/2"	15.5#	3770'	841 cu.ft. circ. to surf.

Plan to drill with spud mud to set 250' of surface casing. Will then drill with water and gel-chem-mud to test the Pictured Cliffs formation at ±3770'. Will run DIL-GR-SP and FDC-CNL-GR Caliper logs. If well appears productive, will set 5-1/2" casing at TD, cement in 1 stage, selectively perforate, frac, clean out after frac and complete with 2-7/8" tubing.

GAS IS NOT DEDICATED.

RECEIVED  
OCT 27 1992  
CON. DIV  
DIST. 3

IN ABOVE SPACE DESCRIBE PROPOSED PROGRAM: If proposal is to deepen, give data on present productive zone and proposed new productive zone. If proposal is to drill or deepen directionally, give pertinent data on subsurface locations and measured and true vertical depths. Give blowout preventer program, if any.

24.

SIGNED

Fran Perrin  
Fran Perrin

TITLE Regulatory Liaison

DATE 9/18/92

(This space for Federal or State office use)

APPROVED  
AS AMENDED

PERMIT NO.

APPROVAL DATE

Application approval does not warrant or certify that the applicant holds legal or equitable title to those rights in the subject lease which would entitle the applicant to conduct operations thereon.  
CONDITIONS OF APPROVAL, IF ANY:

APPROVED BY

TITLE

DATE

\*See Instructions On Reverse Side

NMOOD

Title 18 U.S.C. Section 1001, makes it a crime for any person knowingly and willfully to make to any department or agency of the United States any false, fictitious or fraudulent statements or representations as to any matter within its jurisdiction.

Submit to Appropriate  
District Office  
State Lease - 4 copies  
Fee Lease - 3 copies

State of New Mexico  
Energy, Minerals and Natural Resources Department

Form C-102  
Revised 1-1-89

OIL CONSERVATION DIVISION

P.O. Box 2088  
Santa Fe, New Mexico 87504-2088

RECEIVED  
BLM

92 SEP 13 PM 2:51

DISTRICT I

P.O. Box 1980, Hobbs, NM 88240

DISTRICT II

P.O. Drawer DD, Artesia, NM 88210

DISTRICT III

1000 Rio Brazos Rd., Aztec, NM 87410

WELL LOCATION AND ACREAGE DEDICATION PLAT

All Distances must be from the outer boundaries of the section

Operator Nassau Resources, Inc.			Lease GARRACAS UNIT-PC 23 B		Well No. 13
Unit Letter M	Section 23	Township 32 North	Range 4 West	County NMPM Rio Arriba	

Actual Footage Location of Well:

790 feet from the	South	line and	790 feet from the	West	line
Ground level Elev.	Producing Formation Pictured Cliffs		Pool W.C. CARRACAS	Dedicated Acreage: 160.0 Acres	
6610 Est.			Undesignated Pictured Cliffs		

- Outline the acreage dedicated to the subject well by colored pencil or hatchure marks on the plat below.
- If more than one lease is dedicated to the well, outline each and identify the ownership thereof (both as to working interest and royalty).
- If more than one lease of different ownership is dedicated to the well, have the interest of all owners been consolidated by communitization, unitization, force-pooling, etc.?  
☒ Yes ☐ No If answer is "yes" type of consolidation Unitization - Carracas Unit  
If answer is "no" list the owners and tract descriptions which have actually been consolidated. (Use reverse side of this form if necessary).  
No allowable will be assigned to the well until all interests have been consolidated (by communitization, unitization, forced-pooling, or otherwise) or until a non-standard unit, eliminating such interest, has been approved by the Division.

Section 23	

OPERATOR CERTIFICATION

I hereby certify that the information contained herein is true and complete to the best of my knowledge and belief.

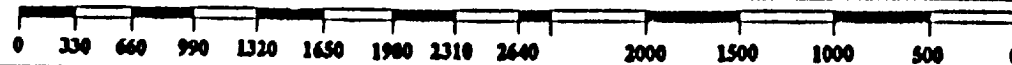
Signature  
Fran Perrin  
Printed Name  
Fran Perrin  
Position  
Regulatory Liaison  
Company  
Nassau Resources, Inc.  
Date  
9/17/92

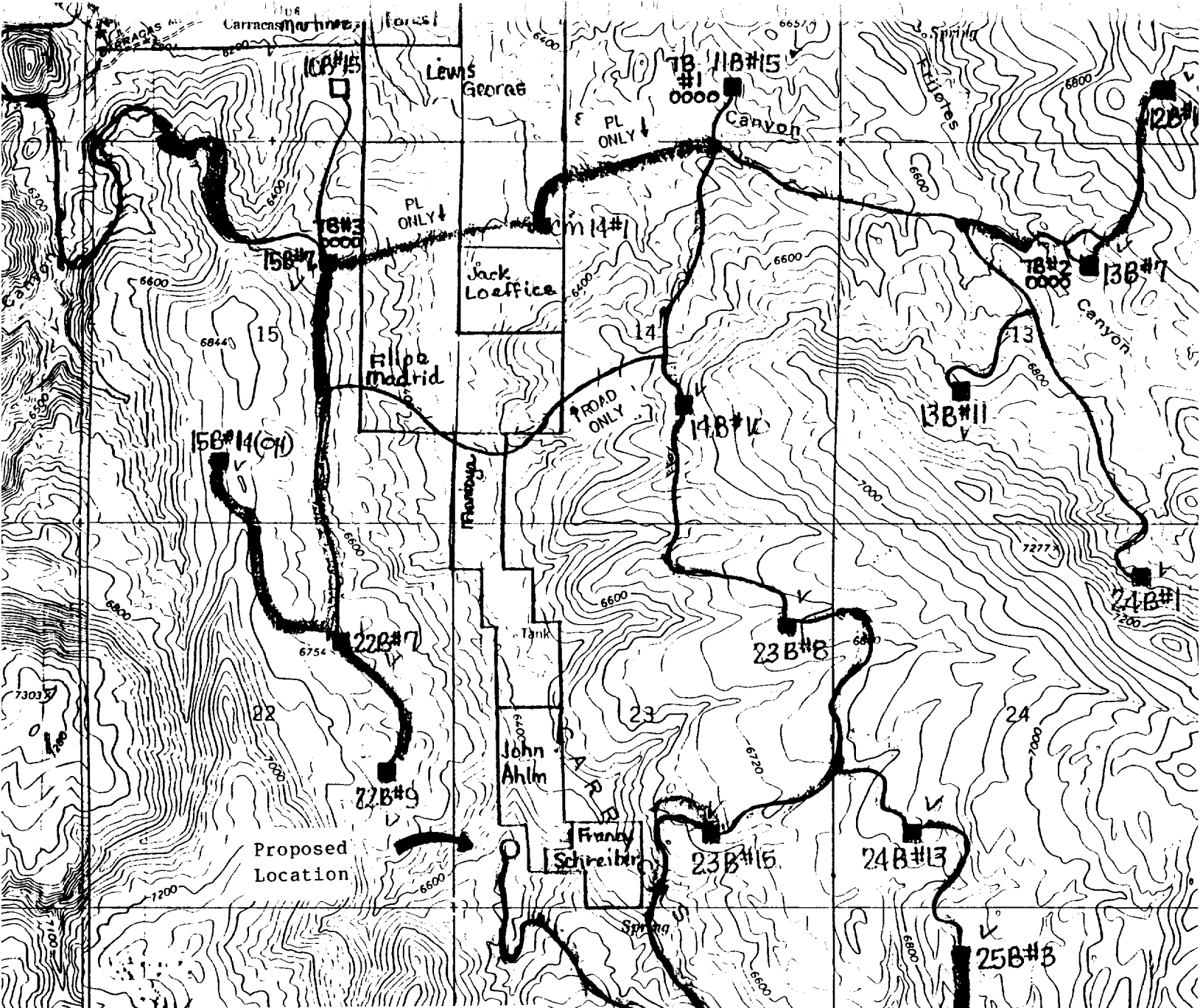
SURVEYOR CERTIFICATION

I hereby certify that the well location shown on this plat was plotted from field notes of actual surveys made by me or under my supervision, and that the same is true and correct to the best of my knowledge and belief.

Date Surveyed  
September 4, 1992

Signature & Seal of  
Professional Surveyor  
  
Edgar L. Risenhoyer, P.S.





**SURFACE OWNERSHIP:**

John A. & Mini F. Ahlm, 1206 N. Gibson Ave.,  
Farmington, NM 87401 505 325-2278  
Frank L. & Sadie Schreiber, 541 W. Las Cruces  
Ave., Las Cruces, NM 88005, 505 523-8852  
U.S.F.S. Jicarilla Ranger Dist., Gobernador  
Rt., Blanco NM 87412, 505 334-2876

Existing road

Proposed road and pipeline

NASSAU RESOURCES, INC.  
Carracas Unit-PC 23 B #13  
Exhibit F