

Form 3160-3  
(December 1990)SUBMIT IN TRIPLICATE\*  
(Other instructions on  
reverse side)Form approved.  
Budget Bureau No. 1004-0136  
Expires: December 31, 1991UNITED STATES  
DEPARTMENT OF THE INTERIOR  
BUREAU OF LAND MANAGEMENT

## APPLICATION FOR PERMIT TO DRILL OR DEEPEN

## 1A. TYPE OF WORK

DRILL ☒DEEPEN ☐

## B. TYPE OF WELL

OIL  
WELL ☐GAS  
WELL ☒

OTHER

SINGLE  
ZONE ☒MULTIPLE  
ZONE ☐

## 2. NAME OF OPERATOR

NASSAU RESOURCES, INC. 15515

## 3. ADDRESS AND TELEPHONE NO.

P O BOX 809, Farmington, N.M. 87499

## 4. LOCATION OF WELL (Report location clearly and in accordance with any State requirements.)\*

At surface

1340' FNL - 1085' FEL

At proposed prod. zone

## 14. DISTANCE IN MILES AND DIRECTION FROM NEAREST TOWN OR POST OFFICE\*

12 miles SE of Arboles, Colorado

## 15. DISTANCE FROM PROPOSED\*

LOCATION TO NEAREST  
PROPERTY OR LEASE LINE, FT.  
(Also to nearest drig. unit line, if any) 1085'

## 16. NO. OF ACRES IN LEASE

2522.12

18. DISTANCE FROM PROPOSED LOCATION\*  
TO NEAREST WELL, DRILLING, COMPLETED,  
OR APPLIED FOR, ON THIS LEASE, FT. 2000'

## 19. PROPOSED DEPTH

4220'

## 21. ELEVATIONS (Show whether DF, RT, GR, etc.)

7010' GL; 7022' DF, 7023' KB

## 23.

## PROPOSED CASING AND CEMENTING PROGRAM

SIZE OF HOLE	GRADE SIZE OF CASING	WEIGHT PER FOOT	SETTING DEPTH	QUANTITY OF CEMENT
12-1/4"	9-5/8"	36#	250'	150 cu.ft. circ. to surf.
7-7/8"	5-1/2"	15.5#	4220'	943 cu.ft. circ. to surf.

Plan to drill with spud mud to set 250' of surface casing. Will then drill with water and gel-chem. mud to test the Pictured Cliffs formation at 3945'. Will run DIL-GR-SP and FDC-CNL-GR Caliper logs. If well appears productive, will set 5-1/2" casing at TD, cement in 1 stage, selectively perforate, frac, clean out after frac and complete with 2-7/8" tubing.

GAS IS NOT DEDICATED.

RECEIVED

SEP 27 1993

OIL CON. DIV.  
DIST. 3

070 FARMINGTON, NM

SEP FEB -4 AM 11:11

RECEIVED  
BLM

IN ABOVE SPACE DESCRIBE PROPOSED PROGRAM: If proposal is to deepen, give data on present productive zone and proposed new productive zone. If proposal is to drill or deepen directionally, give pertinent data on subsurface locations and measured and true vertical depths. Give blowout preventer program, if any.

24.

SIGNED

Fran Perrin  
Fran Perrin

TITLE Regulatory Liaison

DATE 2/2/93

(This space for Federal or State office use)

PERMIT NO.

APPROVAL DATE

APPROVED  
AS AMENDED

Application approval does not warrant or certify that the applicant holds legal or equitable title to those rights in the subject lease which would be required for operations thereon.

CONDITIONS OF APPROVAL, IF ANY:

NSL-3257-A (4)

NMOCD

SEP 17 1993

APPROVED BY

TITLE

DISTRICT MANAGER

\*See Instructions On Reverse Side

Submitter Appropriate  
District Office  
State Lease - 4 copies  
Fee Lease - 3 copies

State of New Mexico  
Energy, Minerals and Natural Resources Department

Form C-102  
Revised 1-1-89

OIL CONSERVATION DIVISION

P.O. Box 2088  
Santa Fe, New Mexico 87504-2088

DISTRICT I  
P.O. Box 1980, Hobbs, NM 88240

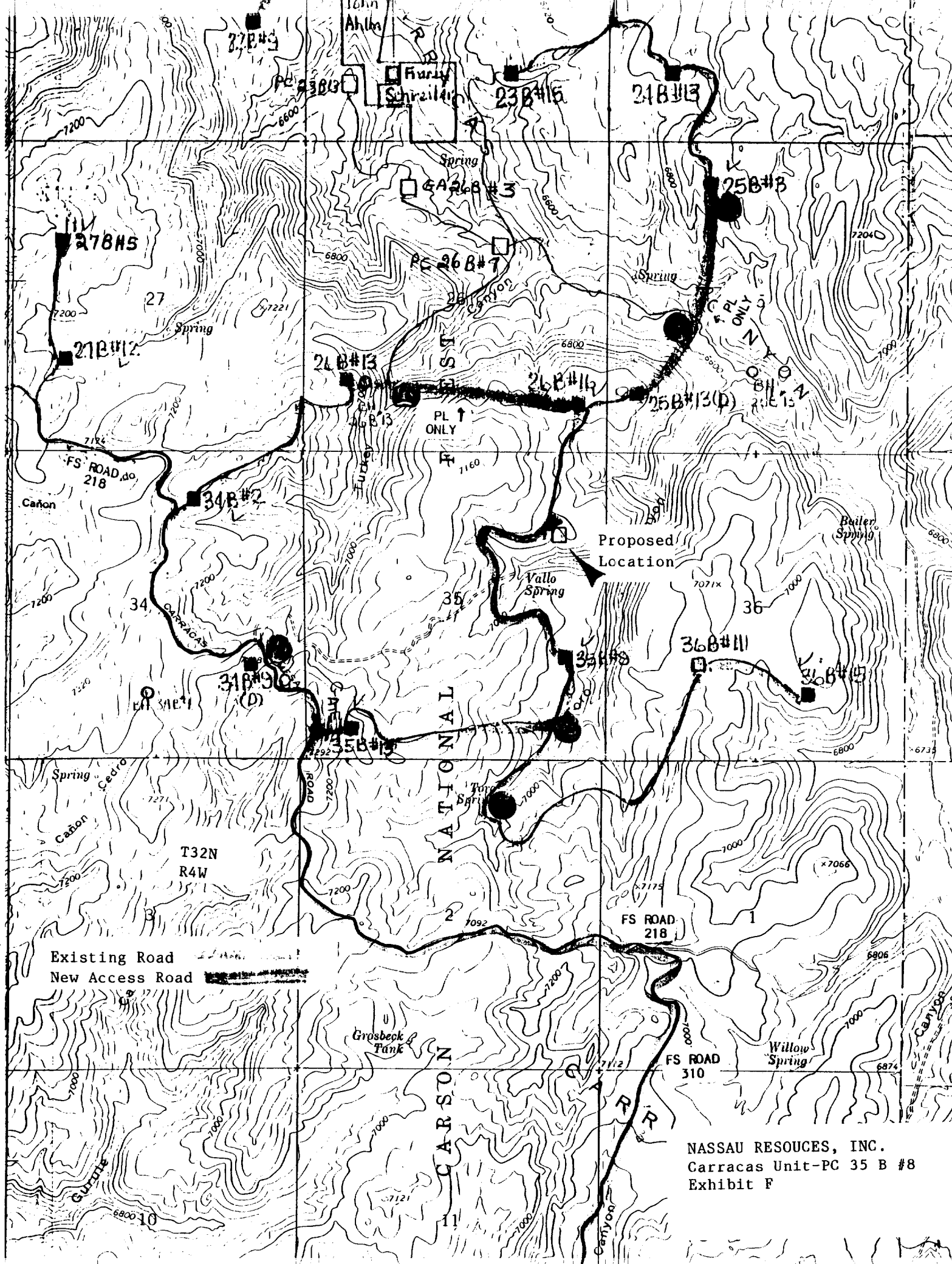
DISTRICT II  
P.O. Drawer DD, Artesia, NM 88210

DISTRICT III  
1000 Rio Brazos Rd., Aztec, NM 87410

WELL LOCATION AND ACREAGE DEDICATION PLAT

All Distances must be from the outer boundaries of the section

Operator Nassau Resources, Inc.			Lease Carracas Unit-PC 35 B		Well No. 8
Unit Letter H	Section 35	Township 32 North	Range 4 West	County NMPM	Rio Arriba
Actual Footage Location of Well:					
1340 feet from the North line and		1085 feet from the East line		Dedicated Acreage:	
Ground level Elev. 7010	Producing Formation Pictured Cliffs		Pool Undesignated Pictured Cliffs		130.0 Acres
<p>1. Outline the acreage dedicated to the subject well by colored pencil or hatchure marks on the plat below.</p> <p>2. If more than one lease is dedicated to the well, outline each and identify the ownership thereof (both as to working interest and royalty).</p> <p>3. If more than one lease of different ownership is dedicated to the well, have the interest of all owners been consolidated by communitization, unitization, force-pooling, etc.?</p> <p><input checked="" type="checkbox"/> Yes <input type="checkbox"/> No If answer is "yes" type of consolidation <u>unit</u></p> <p>If answer is "no" list the owners and tract descriptions which have actually been consolidated. (Use reverse side of this form if necessary.)</p> <p>No allowable will be assigned to the well until all interests have been consolidated (by communitization, unitization, forced-pooling, or otherwise) or until a non-standard unit, eliminating such interest, has been approved by the Division.</p>					
<p>Section 35</p> <p>NM 28812 Amoco Production Co. 12.5% Frontier Energy Corp. 12.5% 35 McHugh Companies 75%</p>			<b>OPERATOR CERTIFICATION</b> I hereby certify that the information contained herein is true and complete to the best of my knowledge and belief.		
			Signature <u>Fran Perrin</u> Printed Name Fran Perrin Position Regulatory Liaison Company Nassau Resources, Inc. Date 2/2/93		
<p>0 330 660 990 1320 1650 1980 2310 2640 2000 1500 1000 500 0</p>			<b>SURVEYOR CERTIFICATION</b> I hereby certify that the well location shown on this plat was plotted from field notes of actual surveys made by me or under my supervision, and that the same is true and correct to the best of my knowledge and belief.		
			Date Surveyed SEP 27 1993 Signature of Professional Surveyor <u>Edgar L. Risenhoover</u> Certificate No. 3979 Edgar L. Risenhoover, P.S.		



NASSAU RESOURCES, INC.  
Carracas Unit-PC 35 B #8  
Exhibit F