



STATE OF NEW MEXICO
ENERGY, MINERALS AND NATURAL RESOURCES DEPARTMENT

OIL CONSERVATION DIVISION
2040 S. PACHECO
SANTA FE, NEW MEXICO 87505
(505) 827-7131

June 11, 1996

RECEIVED
JUN 13 1996
OIL CON. DIV.
DIST. 3

Kestrel Resources, Inc.
c/o Walsh Engineering & Production Corp.
7415 East Main
Farmington, New Mexico 87402
Attention: Paul C. Thompson, P.E.

Administrative Order NSL-3681

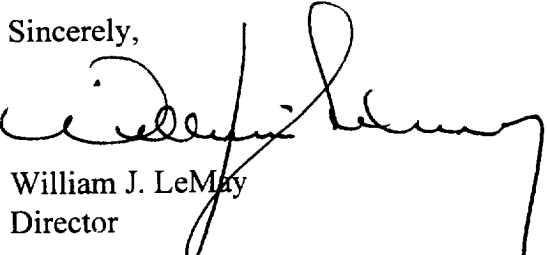
Dear Mr. Thompson:

Reference is made to your application on behalf of the operator, Kestrel Resources, Inc., dated June 3, 1996 for an unorthodox oil well location to test the Entrada formation for the proposed Gonzales Well No. 1 to be drilled 350 feet from the South line and 1090 feet from the East line (Unit P) of Section 30, Township 32 North, Range 2 East, NMPM, as projected into the unsurveyed Tierra Amarilla Land Grant, Rio Arriba County, New Mexico. The SE/4 SE/4 of said Section 30 shall be dedicated to the well forming a standard 40-acre oil spacing and proration unit for said interval.

The application has been duly filed under the provisions of Rule 104.F of the General Rules and Regulations of the New Mexico Oil Conservation Division ("Division"), revised by Division Order No. R-10533, issued by the Oil Conservation Commission in Case 11,351 on January 18, 1996.

By the authority granted me under the provisions of Division General Rule 104.F(2), the above-described unorthodox oil well location is hereby approved.

Sincerely,



William J. LeMay
Director

WJL/MES/kv

cc: Oil Conservation Division - Aztec ✓

**WALSH**

ENGINEERING & PRODUCTION CORP.

Petroleum Engineering Consulting
Lease Management
Contract Pumping7415 East Main
Farmington, New Mexico 87402
(505) 327-4892

June 3, 1996

Mr. William J. LeMay
New Mexico Oil Conservation Division
2040 S. Pacheco
Santa Fe, NM 87505

Re: Non-Standard Location
Kestrel Resources, Inc.
Gonzales #1
350' FSL, 1090' FEL
Section 30, T32N R2E
Rio Arriba, NM
Wildcat Entrada

RECEIVED
JUN - 7 1996
OIL CON. DIV
DIST. 3

Change to
990 FEL
OK ?

Dear Mr. LeMay,

This is a request on behalf of Kestrel Resources, Inc. for administrative approval for a non-standard gas location the above referenced Wildcat Entrada well.

The well is staked at the edge of a small mountain meadow that lies just above Boyer Lake. The proposed spacing unit is the SE/SE of Section 30, T32N, R2E, which is a regular 40 acres. The well would have to be moved 100' east to conform to the spacing requirements. However, moving the location 100' east would place it in the swamp above Boyer Lake and interfere with the drainage into the lake. The rest of the SE/SE of Section 30 is comprised of steep hillsides that would require excessive cuts and fills to build a location and would make winter access difficult.

Kestrel Resources, Inc. owns all of the offset drilling blocks. The proposed location is acceptable with the surface owner. Attached is a plat indicating the well location and proposed spacing unit and a topographical map of the area.

Thank you for your consideration and approval of this application. If you have any questions please do not hesitate to call upon me.

Sincerely,

Paul C. Thompson, P.E.
President, Walsh Engineering

cc: Phillip Kreick, Kestrel
NMOCD Aztec NM

District I
PO Box 1908, Hobbs, NM 88241-1908
District II
PO Drawer DD, Artesia, NM 88211-0719
District III
1000 Rio Brazos Rd., Aztec, NM 87410
District IV
PO Box 2088, Santa Fe, NM 87504-2088

State of New Mexico
Energy, Minerals & Natural Resources Department

OIL CONSERVATION DIVISION
PO Box 2088
Santa Fe, NM 87504-2088

Form C-102
Revised February 10, 1994
Instructions on back
Submit to Appropriate District Office
State Lease - 4 Copies
Fee Lease - 3 Copies

☐ AMENDED REPORT

WELL LOCATION AND ACREAGE DEDICATION PLAT

API Number		Pool Code	Wildcat Entrada	Pool Name
		Oil Well/30, 32N, 2E, P: Entrada (Oil)		
Property Code	Property Name			Well Number
	GONZALES			No. 1
OGRID No.	Operator Name			Elevation
	KESTREL RESOURCES, INC.			8327

10 Surface Location

UL or lot no.	Section	Township	Range	Lot Ida	Foot from the	North/South line	Foot from the	East/West line	County
	30	32N	2E		350	South	1090	East	Rio Arriba

11 Bottom Hole Location If Different From Surface

UL or lot no.	Section	Township	Range	Lot Ida	Foot from the	North/South line	Foot from the	East/West line	County
Dedication Acres		Joint or Infill		Consolidation Code		Order No.			

NO ALLOWABLE WILL BE ASSIGNED TO THIS COMPLETION UNTIL ALL INTERESTS HAVE BEEN CONSOLIDATED
OR A NON-STANDARD UNIT HAS BEEN APPROVED BY THE DIVISION

16					17 OPERATOR CERTIFICATION I hereby certify that the information contained herein is true and complete to the best of my knowledge and belief. Paul C. Thompson Signature Paul C. Thompson Printed Name Agent Title 6/3/96 Date
					18 SURVEYOR CERTIFICATION I hereby certify that the well location shown on this plat was plotted from field notes of actual surveys made by me or under my supervision, and that the same is true and correct to the best of my belief. 17 May 1996 Date of Survey William H. Albert Signature William H. Albert Printed Name Professional Surveyer 7241 New Mexico REGISTERED PROFESSIONAL SURVEYOR

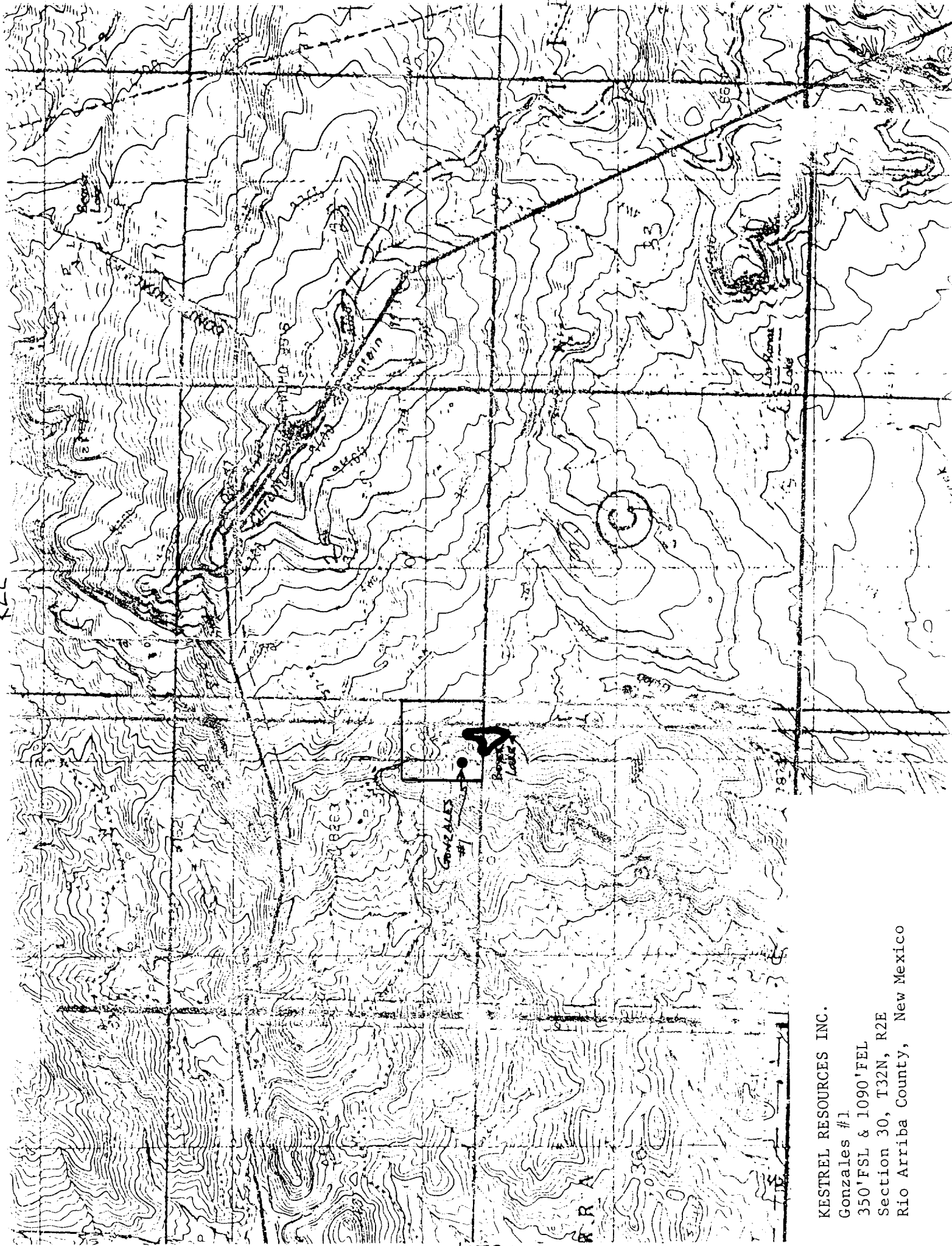
RECEIVED
JUN - 7 1996
OIL CON. DIV.
DIST. 8

30

350'

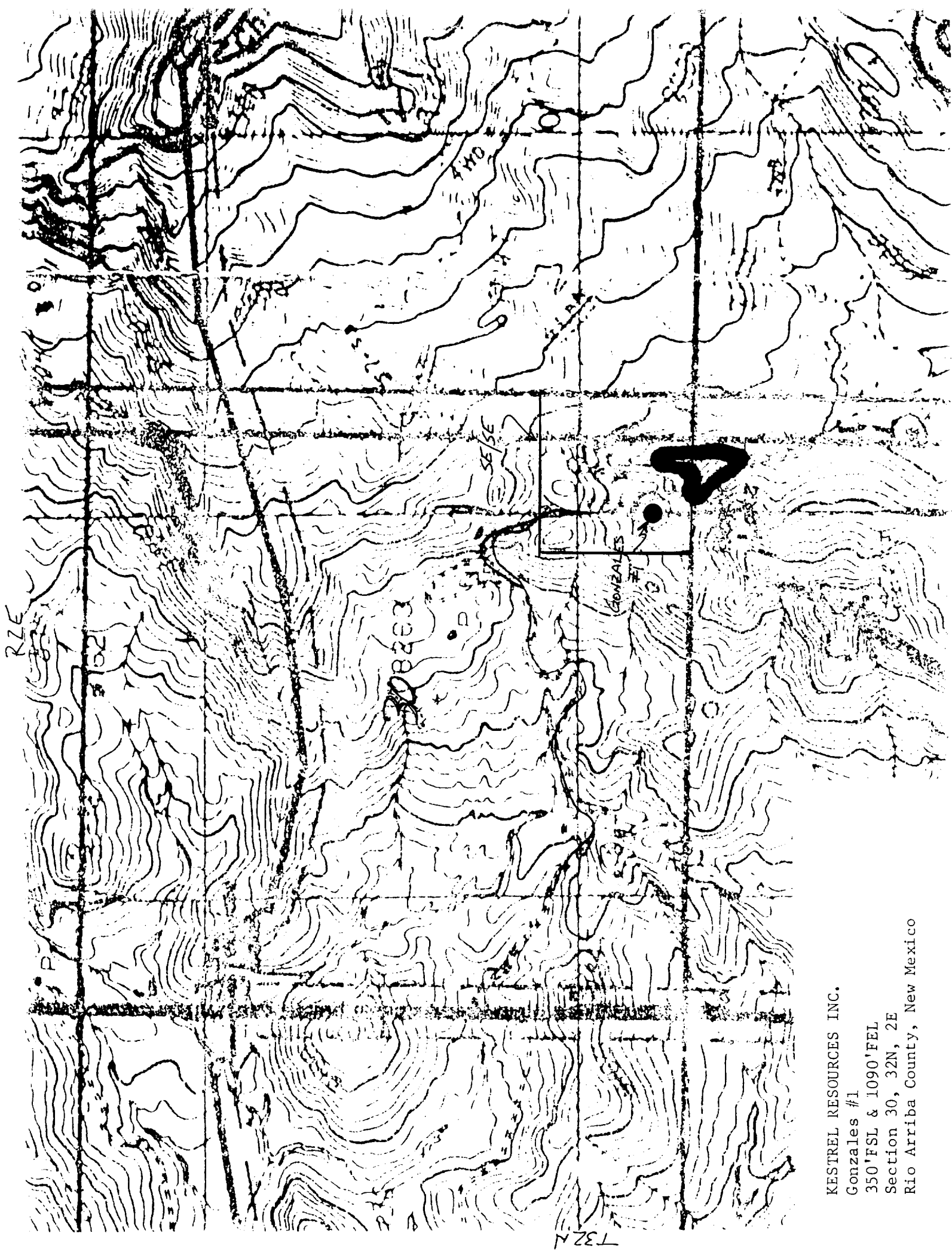
Gonzales No. 1
1090'

R2E



T32N

KESTREL RESOURCES INC.
Gonzales #1
350'FSL & 1090'FEL
Section 30, T32N, R2E
Rio Arriba County, New Mexico



KESTREL RESOURCES INC.

Gonzales #1

350'FSL & 1090'FEL

Section 30, 32N, 2E

Rio Arriba County, New Mexico